

Memorandum

City of Lawrence

Public Works Department

TO: Charles F. Soules, P.E., Director of Public Works
FROM: Mark Thiel, Assistant Public Works Director
CC: David Woosley, P.E., Traffic Engineer
DATE: May 17, 2016
RE: School traffic issues – New York, Cordley and Langston Hughes Elementary School

As USD 497 school district began to complete renovations of New York, Cordley and Langston Hughes Elementary schools, traffic issues began to become an issue on the adjacent streets around the schools. To address these concerns, public meetings were held during the fall semester at each school that included neighborhoods, patrons, USD 497 staff and city staff. The primary purpose of the meetings was to hear concerns, collect input and work toward identifying the issues and possible solutions. As a result we identified possible solutions moving forward at each of the schools mentioned above.

At New York Elementary it was determined that it would be best to wait until construction to the school was complete and traffic around the school had an opportunity to normalize. We met again as a group in May 2016. What we found at this meeting was the traffic concerns voiced in September 2015 had now normalized and were no longer an issue. We also found that the traffic patterns for drop off and pick up of students now was creating an issue on New York Street. After discussion of several potential solutions it was the consensus of the group that at the beginning of the 2016/2017 school year the city would install some temporary no parking signs on the west side of New York Street ([see map](#)). We will monitor this during the fall semester and hold another public meeting in November 2016, to discuss the outcome of the no parking. Based on the temporary nature of this traffic measure no Commission actions are required at this time.

At Cordley Elementary we installed some temporary no parking and a no left turn from Vermont Street onto 19th Street as a result of our first meeting ([see map 1](#)). We met again with this group in May 2016 to discuss the outcome of this temporary traffic control. What we heard was that overall the temporary solutions were working. The consensus of the group was to refine the no parking area on the west side of Vermont Street a bit and to keep the no left turn during school hours and to allow parking on the east side of Kentucky Street from 18th Street south to the northern most school driveway ([see map 2](#)).

At Langston Hughes Elementary we installed some temporary no parking on Diamondhead Drive as a result of our first meeting ([see map 1](#)). We met again with this group in May 2016 to discuss the outcome of the temporary traffic control. What we heard from this group also was that overall the measures improved the issue. There was a consensus to make a few minor changes to the no parking ([see map 2](#)). Part of the no parking area on Diamondhead Drive will only be no parking while school is in session.

Actions

Establish no parking along the west side of Vermont Street, from 18th Street to the south 95 feet from 19th Street; and establish no parking, no stopping, no standing on the west side of Vermont Street, from 19th Street north 95 feet; and establish no left turns for south bound Vermont Street traffic onto 19th Street, from 8:00 a.m. to 6:00 p.m. Monday through Friday during school days; and rescind the current no parking restrictions on the east side of Kentucky Street from 18th Street south to the northern most school driveway.

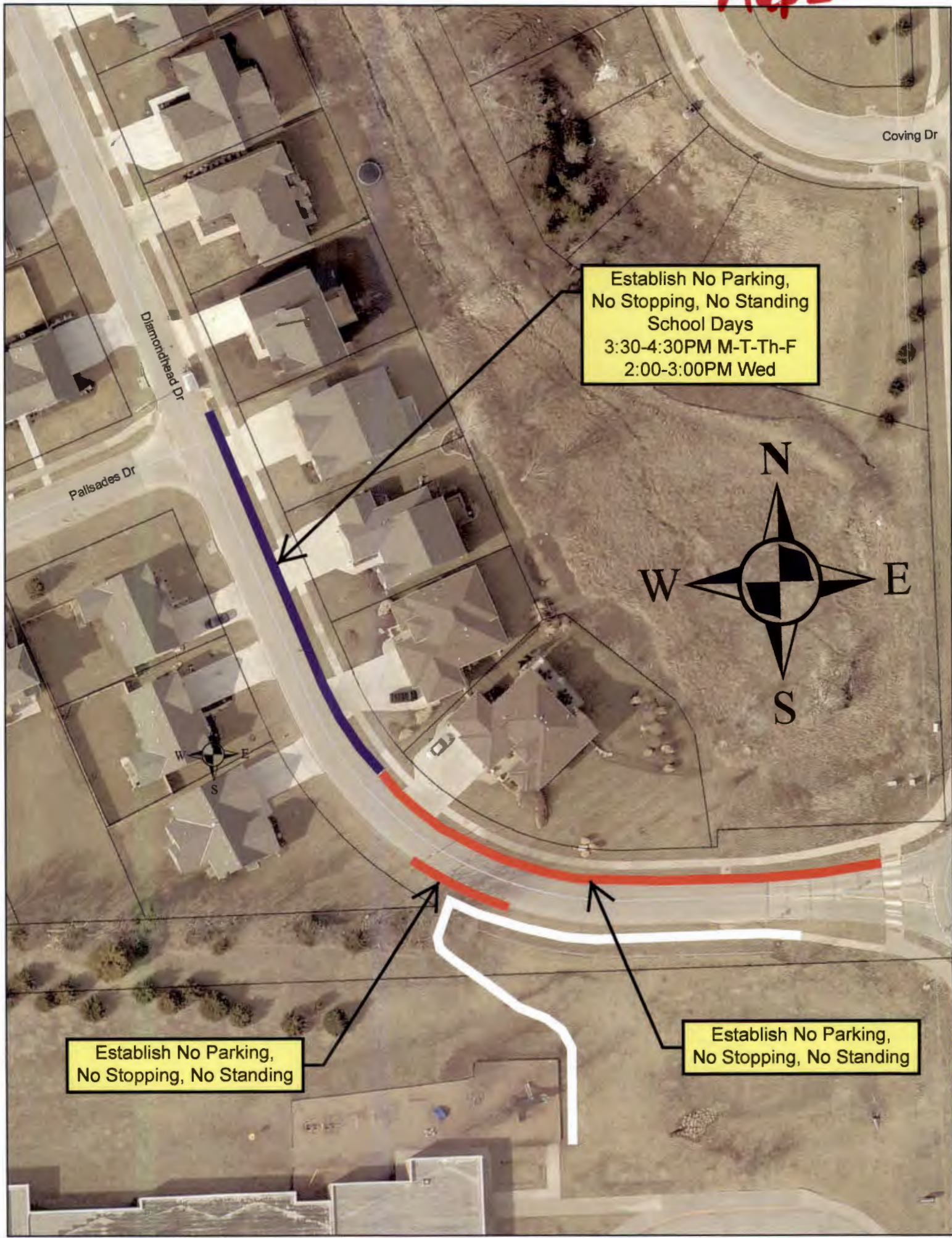
Establish no parking, no stopping, no standing on the north side of Diamondhead Drive from the west

crosswalk at George Williams Way to the north property line of 1016 Diamondhead Drive; and establish no parking, no stopping, no standing on school days from 3:30 p.m. to 4:30 p.m. on Mondays, Tuesdays, Thursdays and Fridays and from 2:00 p.m. to 3:00 p.m. on Wednesdays on the north side of Diamondhead Drive from the north property line of 1016 Diamondhead Drive to the north property line of 1004 Diamondhead Drive, and establish no parking, no stopping, no standing on the south side of Diamondhead Drive to a point 20 feet east and 20 feet west of the access sidewalk on the USD 497 property.

Map 1

**"Red" indicates Temporary
NO PARKING
NO STOPPING
NO STANDING**
**"Blue" indicates Permanent
NO PARKING**
**All signing to be installed during
winter break**





Coving Dr

Diamondhead Dr

Palsades Dr

Establish No Parking,
No Stopping, No Standing
School Days
3:30-4:30PM M-T-Th-F
2:00-3:00PM Wed



Establish No Parking,
No Stopping, No Standing

Establish No Parking,
No Stopping, No Standing