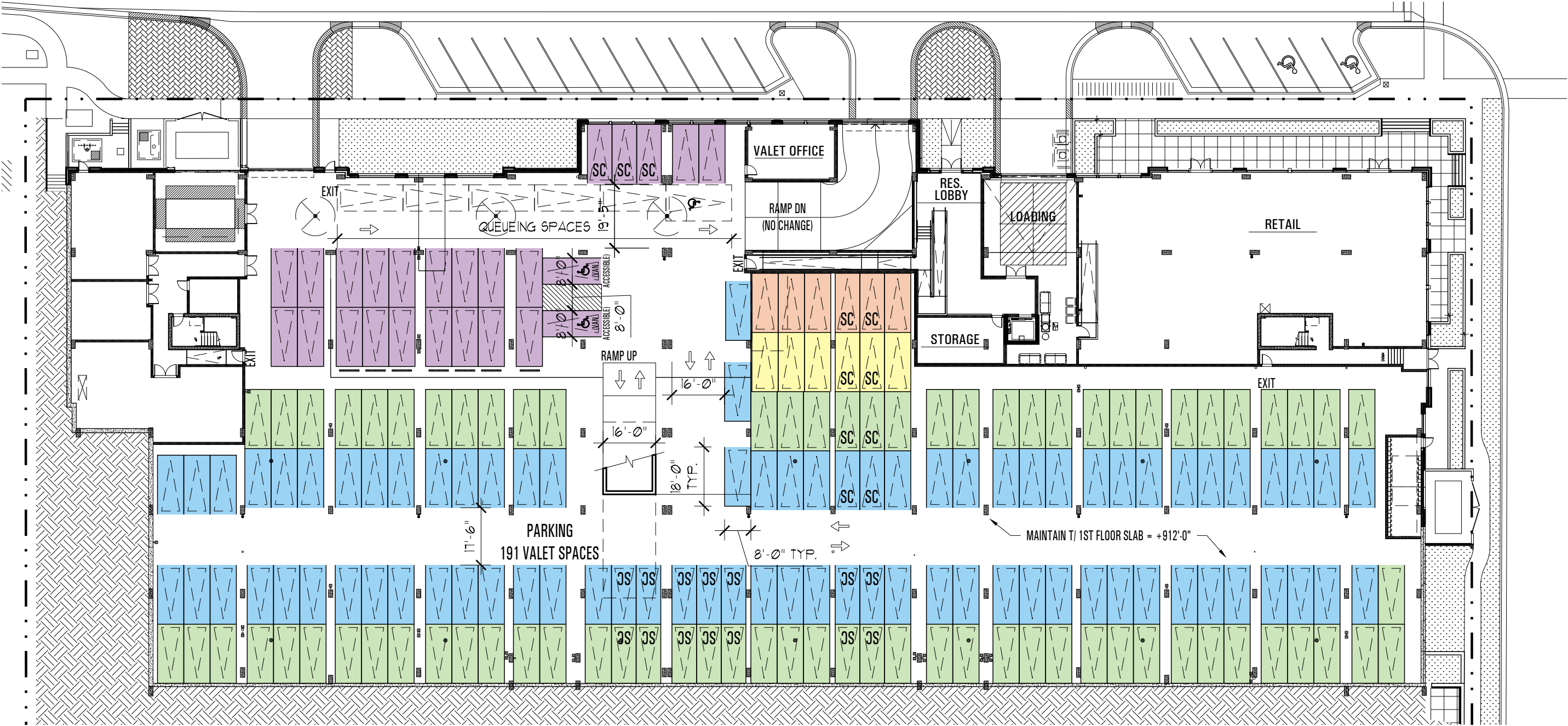


PARKING SUMMARY					
CLASSIFICATION	1ST FLOOR		2ND FLOOR		TOTAL
	STANDARD (18' X 8')	SMALL CAR (18' X 7'-6")	STANDARD (18' X 8')	SMALL CAR (18' X 7'-6")	
STAGING	22	3	0	0	25
LEVEL 1	70	9	0	0	79
LEVEL 2	66	9	132	20	227
LEVEL 3	4	2	77	22	105
LEVEL 4	4	2	58	10	74
TOTAL	166	25	267	52	510
	191		319		





FOR DESIGN REVIEW ONLY. NOT FOR CONSTRUCTION.

HARTSHORNE PLUNKARD ARCHITECTURE

HPA

232 NORTH CARPENTER STREET
CHICAGO, IL 60607
312.226.4488
HPARCHITECTURE.COM

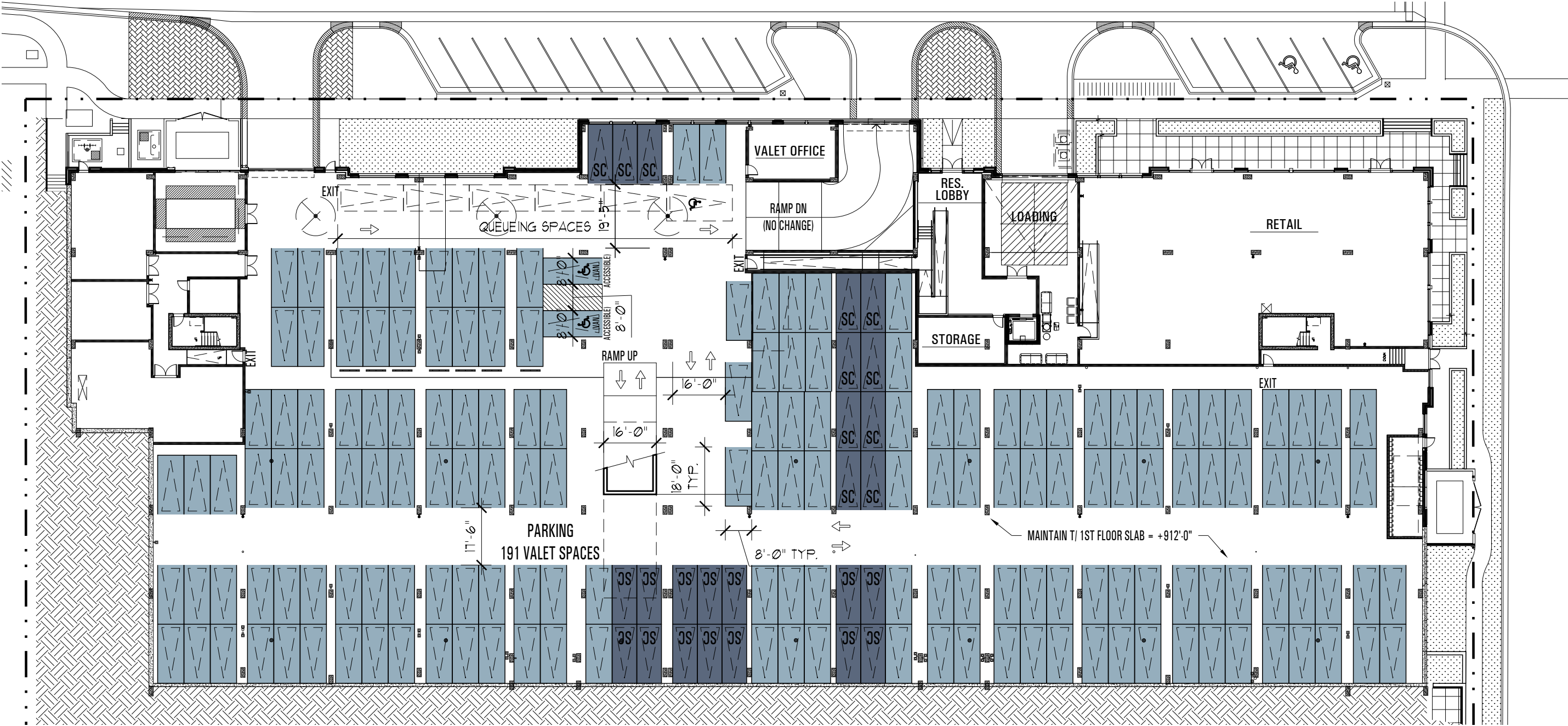
PLANS AND ALL SPECIFICATION ARE SUBJECT TO REVISION AS DEEMED NECESSARY OR ADVISABLE BY BUILDER, ARCHITECT, OR AS REQUIRED BY LAW.

HERE KANSAS

1101 INDIANA ST. LAWRENCE, KANSAS

PROJECT NORTH	SCALE	DRAWING	SK#
	1/32" = 1'-0"	ALT. 2ND FLOOR PARKING PLAN - VALET OPTION	2
	DATE 03-29-16		REV. 9

PARKING SUMMARY					
CLASSIFICATION	1ST FLOOR		2ND FLOOR		TOTAL
	STANDARD (18' X 8')	SMALL CAR (18' X 7'-6")	STANDARD (18' X 8')	SMALL CAR (18' X 7'-6")	
STAGING	22	3	0	0	25
LEVEL 1	70	9	0	0	79
LEVEL 2	66	9	132	20	227
LEVEL 3	4	2	77	22	105
LEVEL 4	4	2	58	10	74
TOTAL (STANDARD)	166		267		433
TOTAL (SMALL CAR)	25		52		77



HARTSHORNE PLUNKARD ARCHITECTURE

HPA

232 NORTH CARPENTER STREET
CHICAGO, IL 60607
312.226.4488
HPARCHITECTURE.COM

PLANS AND ALL SPECIFICATION ARE SUBJECT TO REVISION AS DEEMED NECESSARY OR ADVISABLE BY BUILDER, ARCHITECT, OR AS REQUIRED BY LAW.

HERE KANSAS

1101 INDIANA ST. LAWRENCE, KANSAS

PROJECT

NORTH

SCALE
1/32" = 1'-0"

DATE
03-29-16

DRAWING
ALT. 1ST FLOOR
PARKING PLAN -
VALET OPTION

SK#
3
REV. 9



FOR DESIGN REVIEW ONLY. NOT FOR CONSTRUCTION.

HARTSHORNE PLUNKARD ARCHITECTURE



232 NORTH CARPENTER STREET

CHICAGO, IL 60607

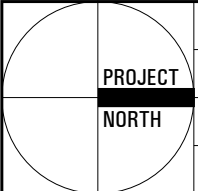
312.226.4488

HPARCHITECTURE.COM

PLANS AND ALL SPECIFICATION ARE SUBJECT TO REVISION AS DEEMED NECESSARY OR ADVISABLE BY BUILDER, ARCHITECT, OR AS REQUIRED BY LAW.

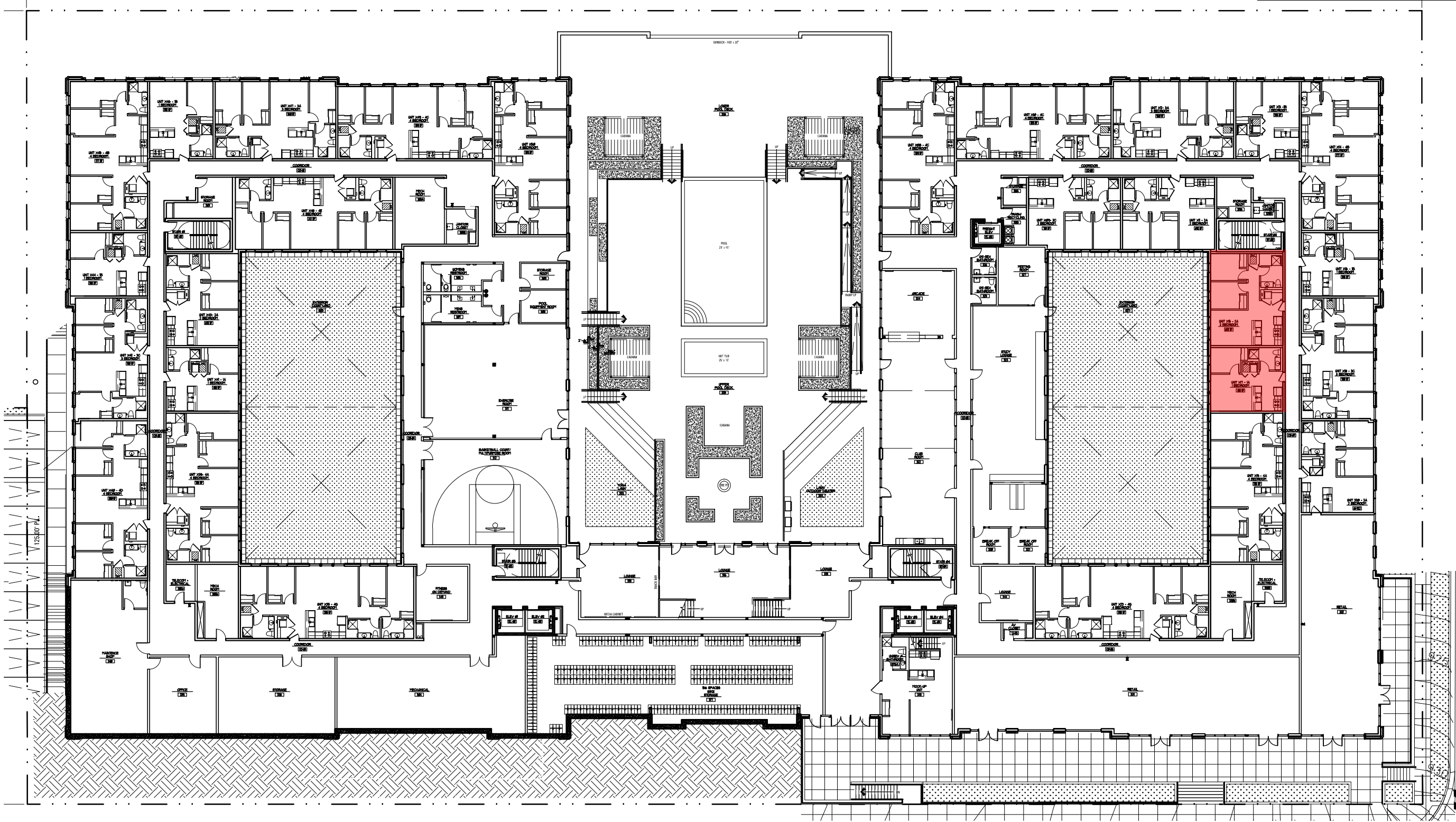
HERE KANSAS

1101 INDIANA ST. LAWRENCE, KANSAS

	PROJECT	SCALE	DRAWING	SK#
	NORTH	1/32" = 1'-0"	ALT. 2ND FLOOR PARKING PLAN - VALET OPTION	4
		DATE		REV. 9
		03-29-16		

LEGEND

= UNOCCUPIED UNIT IN PHASE 1 (UNITS 315, 317, - 3 BEDROOMS TOTAL)



HARTSHORNE PLUNKARD ARCHITECTURE

HPA

222 NORTH CARPENTER STREET
CHICAGO, IL 60607
312.226.4400
HPARCHITECTURE.COM

PLANS AND ALL SPECIFICATION ARE SUBJECT TO REVISION AS DEEMED NECESSARY OR ADVISABLE BY BUILDER, ARCHITECT, OR AS REQUIRED BY LAW.

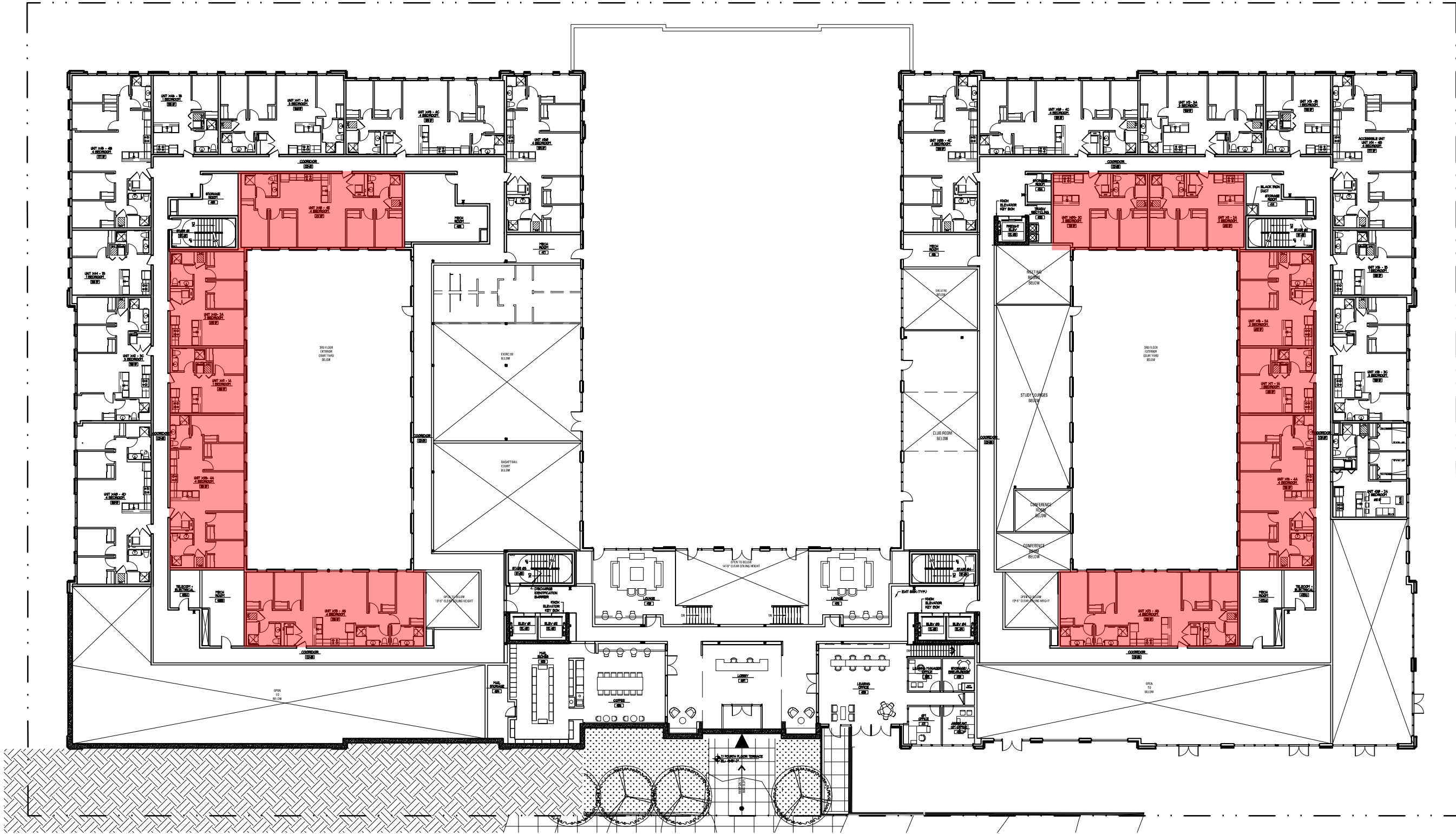
HERE KANSAS

1101 INDIANA ST. LAWRENCE, KANSAS

<div><div></div><div>PROJECT</div><div>NORTH</div></div>	SCALE	DRAWING	SK#
	1/32" = 1'-0"		
	DATE	3RD FLOOR PLAN	
	03-29-16		5
			REV. 9

LEGEND

= UNOCCUPIED UNIT IN PHASE 1 (UNITS 409, 411, 415, 417, 419, 423, 435, 439, 441, 443, 448 - 30 BEDROOMS TOTAL)



HARTSHORNE PLUNKARD ARCHITECTURE

HPA

322 NORTH CARPENTER STREET
CHICAGO, IL 60607
312.326.4488
HPARCHITECTURE.COM

PLANS AND ALL SPECIFICATION ARE SUBJECT TO REVISION AS DEEMED NECESSARY OR ADVISABLE BY BUILDER, ARCHITECT, OR AS REQUIRED BY LAW.

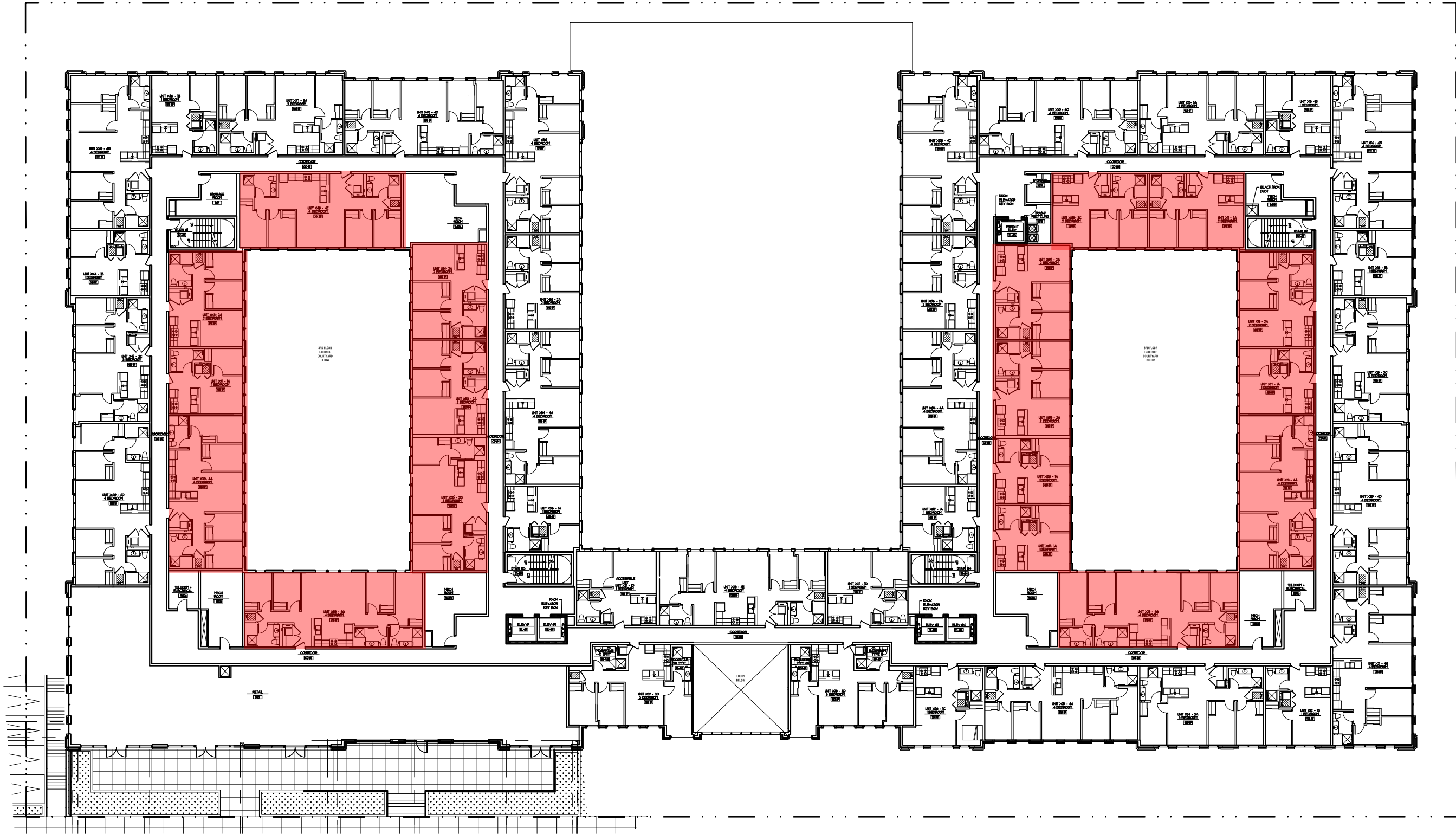
HERE KANSAS

1101 INDIANA ST. LAWRENCE, KANSAS

<div><div></div><div>PROJECT</div><div>NORTH</div></div>	SCALE	DRAWING	SK#
	1/32" = 1'-0"		
	DATE	4TH FLOOR PLAN	6
	03-29-16		REV. 9

LEGEND

- UNOCCUPIED UNIT IN PHASE 1 (UNITS 501, 503, 505, 507, 509, 511, 515, 517, 519, 523, 535, 539, 541, 543, 548, 551, 553, 555 - 43 BEDROOMS TOTAL)



HARTSHORNE PLUNKARD ARCHITECTURE

HPA

232 NORTH CARPENTER STREET
CHICAGO, IL 60607
312.226.4488
HPARCHITECTURE.COM

PLANS AND ALL SPECIFICATION ARE SUBJECT TO REVISION AS DEEMED NECESSARY OR ADVISABLE BY BUILDER, ARCHITECT, OR AS REQUIRED BY LAW.

HERE KANSAS

1101 INDIANA ST. LAWRENCE, KANSAS

<div><div></div><div>PROJECT</div><div>NORTH</div></div>	SCALE	DRAWING	SK#
	1/32" = 1'-0"		
	DATE	5TH FLOOR PLAN	
	03-29-16		7
			REV. 9