

# K-10 & Kasold Intersection



# Main Issues

- Proposal to close K-10 Kasold Intersections this Fall
- K-10 West leg design



# K-10 West Leg SLT Concept



# Proposed K-10 – Kasold Closure this Fall

- Surprise
  - We are going to close this road and not notify local government entities, property owners or the public
- MPO Meeting 2-17-16
  - Concerned officials, property owners and citizens
    - Meeting was overflowing city commission room

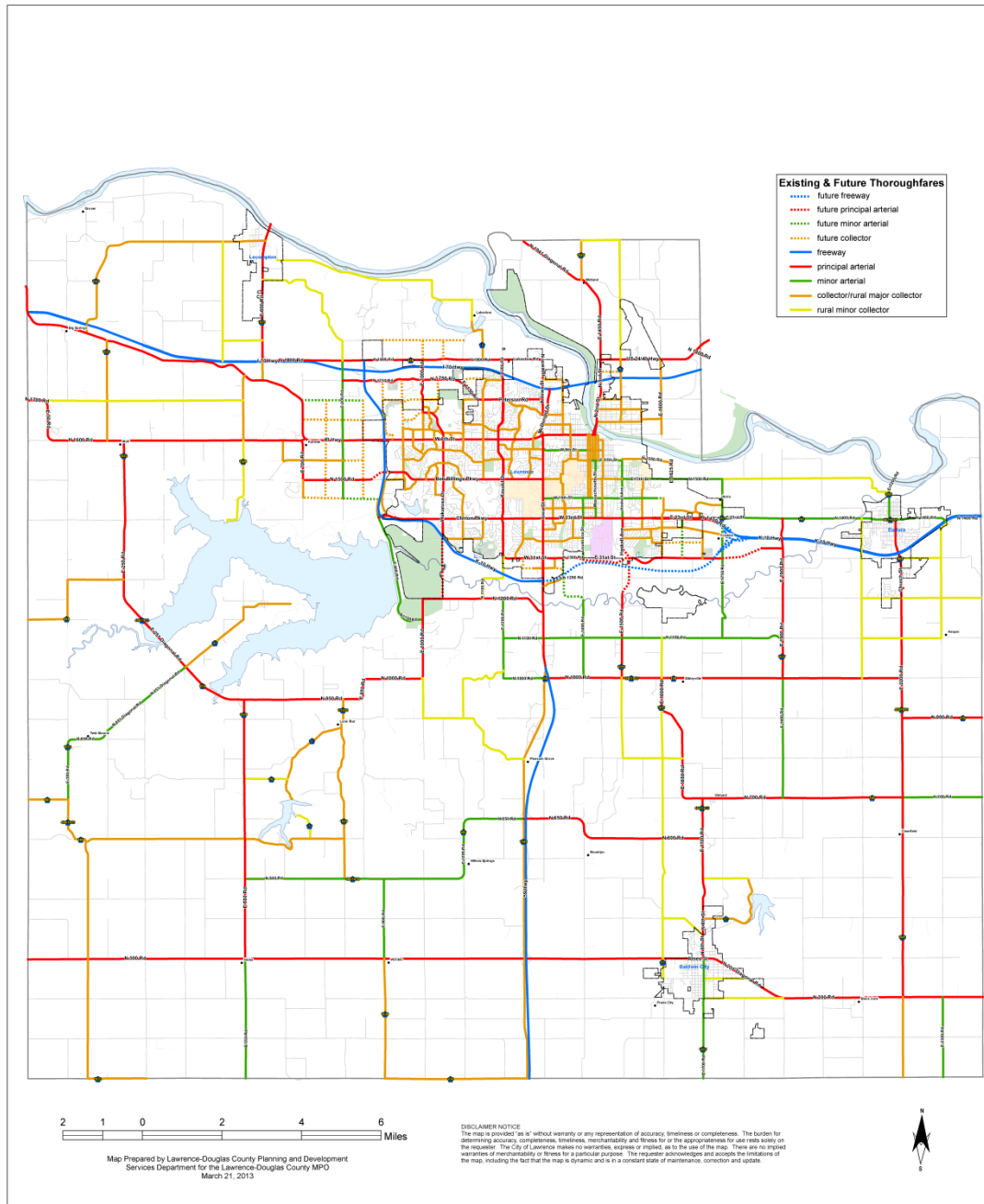
# Initiatives

- New public meeting to be scheduled by K.D.O.T (Kansas Department of Transportation)
  - Late March or early April  
(has not happened yet)
- Pro-Active
  - WE Are: Wakarusa Township, Wakarusa Fire Departments, Douglas County Sheriffs Department, First Student Army Corps. Of Engineers at Clinton Lake, Concerned citizens, and Lawrence Landscape

# Intersection Should Not Be Closed This Fall

- Only two access points to Lawrence from S.W. Douglas County
  - Corps Road at Clinton Lake Dam
  - US 59 Highway and County Rd. 458

# T2040 Major Thoroughfares Map, Douglas County, Kansas



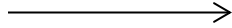
# Highway 59 and County Rd 458

- T-intersection with stop sign
- No staging area for:
  - School Buses
  - Trucks
  - Trailers
- Bad decisions will be made
- Needs redesigned acceleration and deceleration lanes
- Needs to be a signalized intersection
- No KDOT decision
- No official word from KDOT
  - Rumors are that this will be addressed



← Facing East

Median



← Facing South

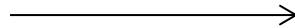
# The Corps Road in Clinton Lake Dam

- Owned and Operated by the Corps
  - Can be closed at anytime
  - Not designed or intended to be a County Highway
    - 50 MPH
    - 20 Ton weight limit
    - 18” Shoulders
    - Double yellow line for 1.6 miles on Dam and 2.6 miles total



← Gates

Stripes

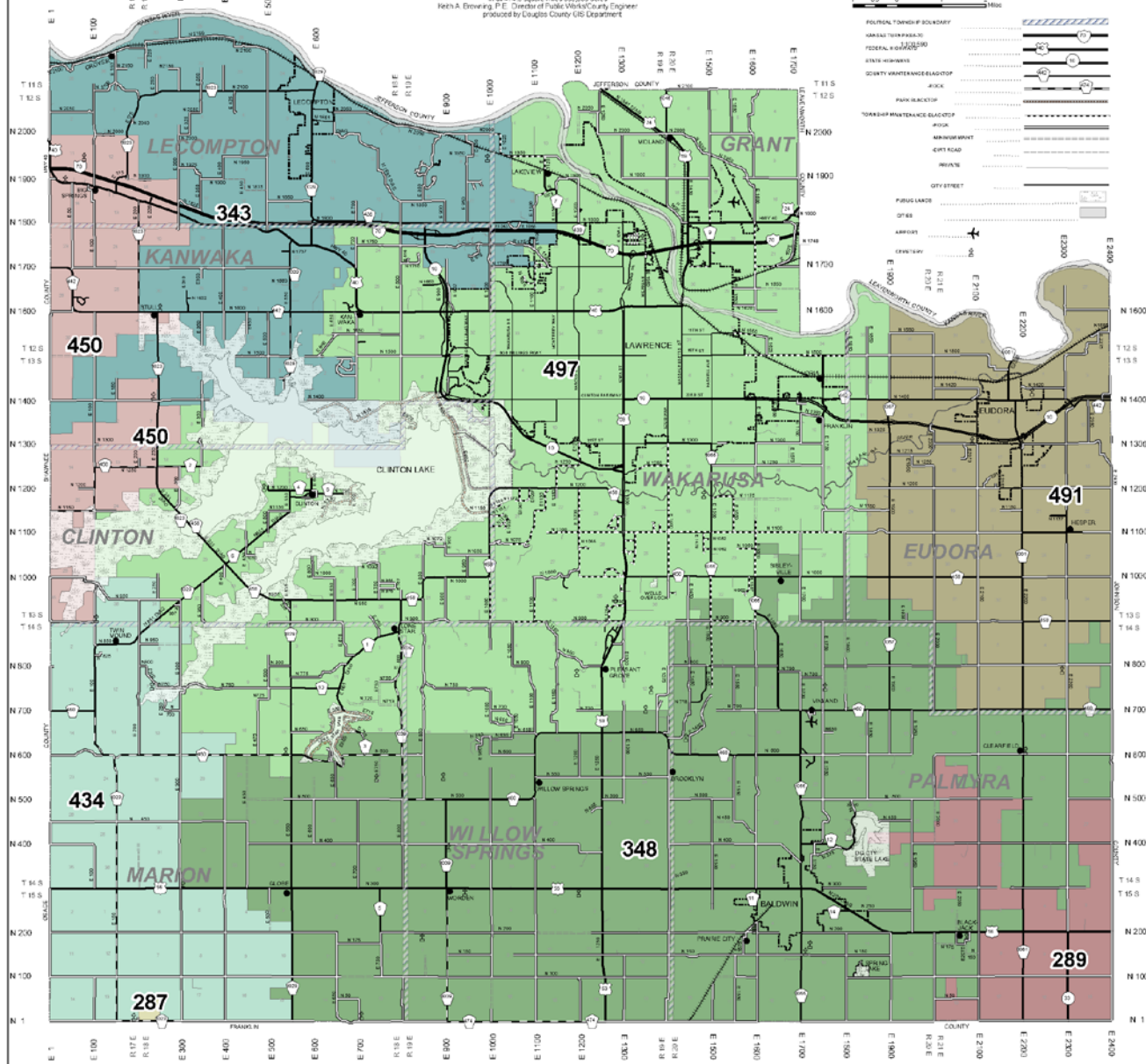


← Long View

# Looking Towards The Future

- West bound people
  - Want to “Right Off” to Kasold and 31<sup>st</sup>
  - Drivers do not want to exit at US 59 to get to 31<sup>st</sup> and Kasold
  - USD 497 Boundaries
  - Future Growth of Lawrence

Map digitized from 1:4800 aerial photography. Map edited March 7, 2007  
in all 474.5 square miles 303,680 acres  
Keith A. Browning, P.E. Director of Public Works/County Engineer  
produced by Douglas County GIS Department



# Our Consensus Recommendation For This Fall

- On demand signalization at K-10 and Kasold Intersection
- Lower the speed limit from 65mph to 55mph from Highway 59 to the “Corps Curve”



US 40 and K-10 Lights

K-10 - Kasold



# Step 2: Redesign of K-10 West Leg

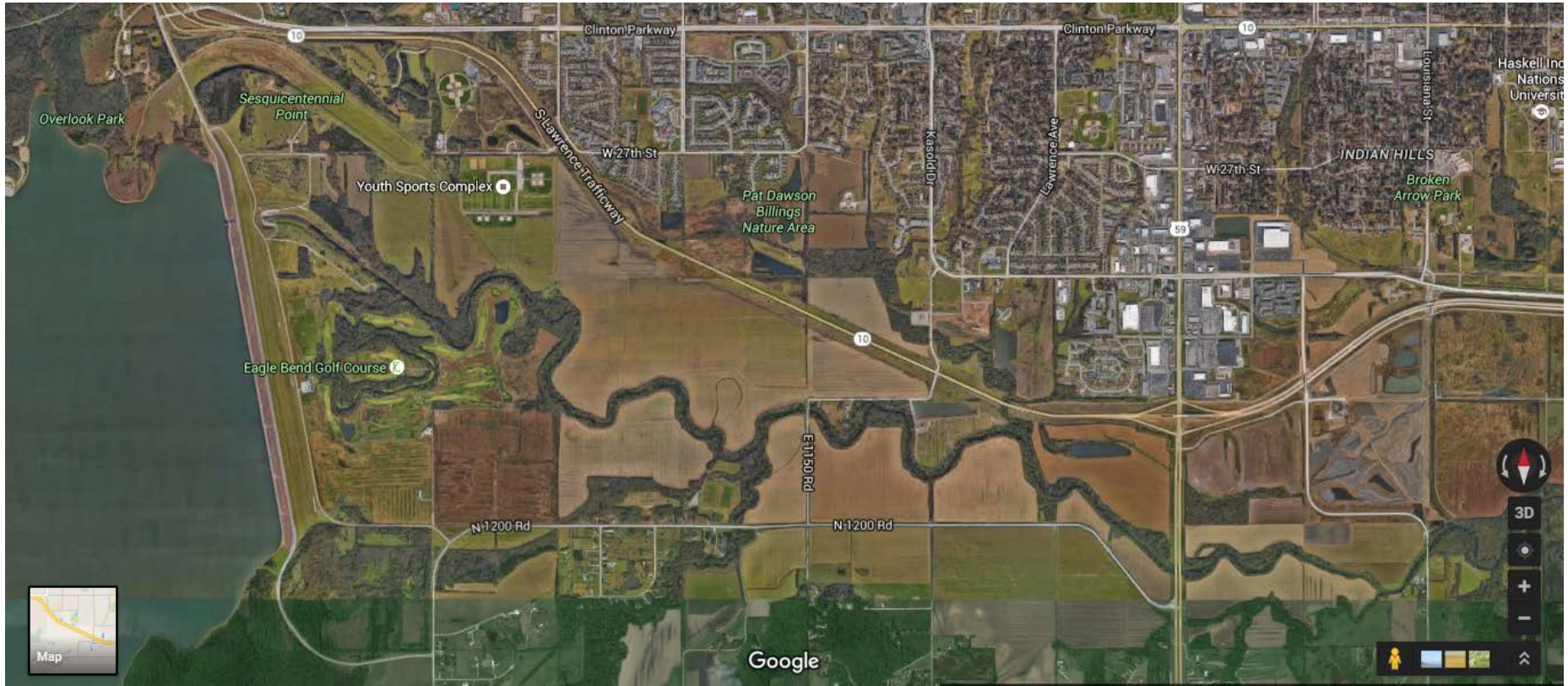
- Kansas Department Of Transportation current proposal
  - Close K-10 and Kasold Intersection
  - Move Wakarusa interchange South and East
  - Diamond Interchange with Frontage road access to YSI and Wakarusa Dr.
  - No access to Southern Douglas County

# K-10 West Leg SLT Concept



# Our Proposal

- Move Intersection East and South
- Diamond Interchange
- Frontage road access to Wakarusa and YSI
- Access North along city property to 31<sup>st</sup> and Kasold
- Access South to Brown Grove Bridge and 458
- Uses existing KDOT Right Of Way
  - Least cost of either option to date
- Forward looking, Thoughtful, Uses existing infrastructure
- Local governmental agencies agree
- Community consensus





← 1250 N Rd

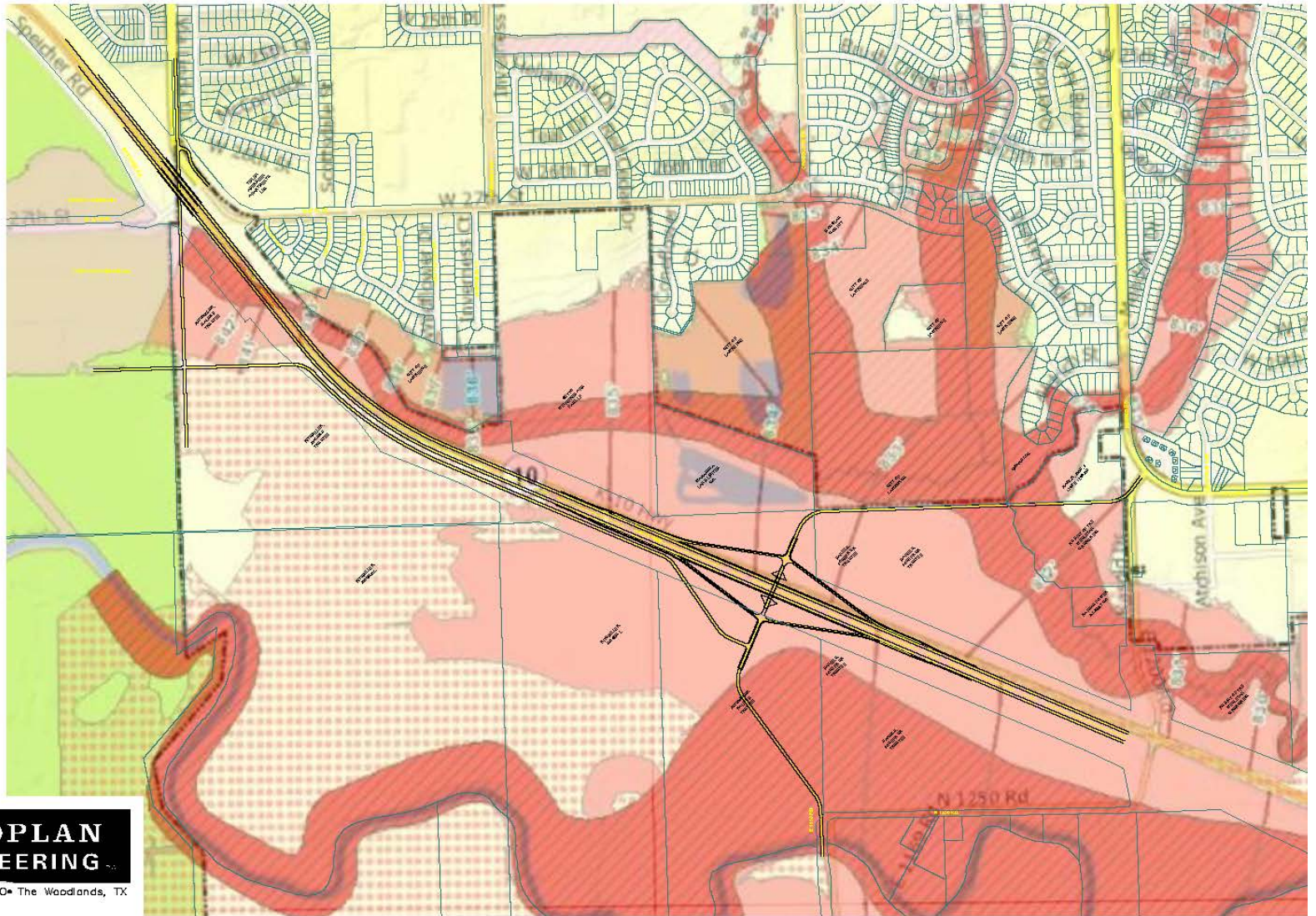
1250 Looking North →



← 1250 N Rd Looking South

# What We Would Like

- Send a letter to KDOT supporting:
  - On demand signal at K-10 and Kasold interchange and lowered speed limit until redesigned K-10 West leg is completed
  - Relocating the Wakarusa interchange Eastward to create the K-10 and Kasold interchange with connections to Wakarusa Dr., 31<sup>st</sup> and Kasold, and the Browns Grove Bridge/ 458

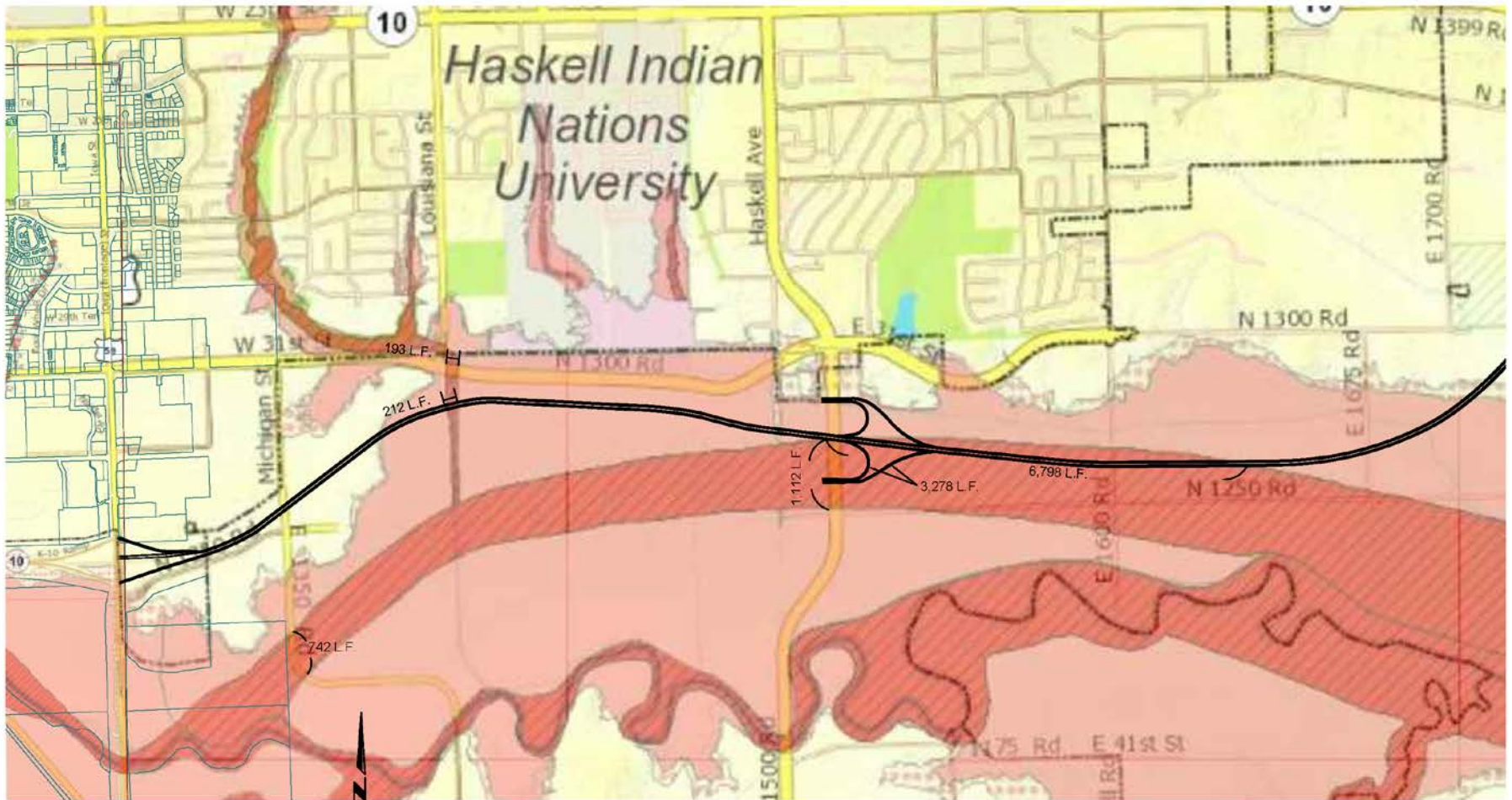


NORTH  
SCALE: 1" = 800'

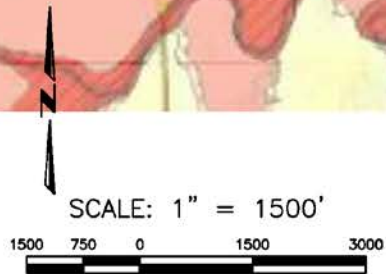


**LANDPLAN  
ENGINEERING**

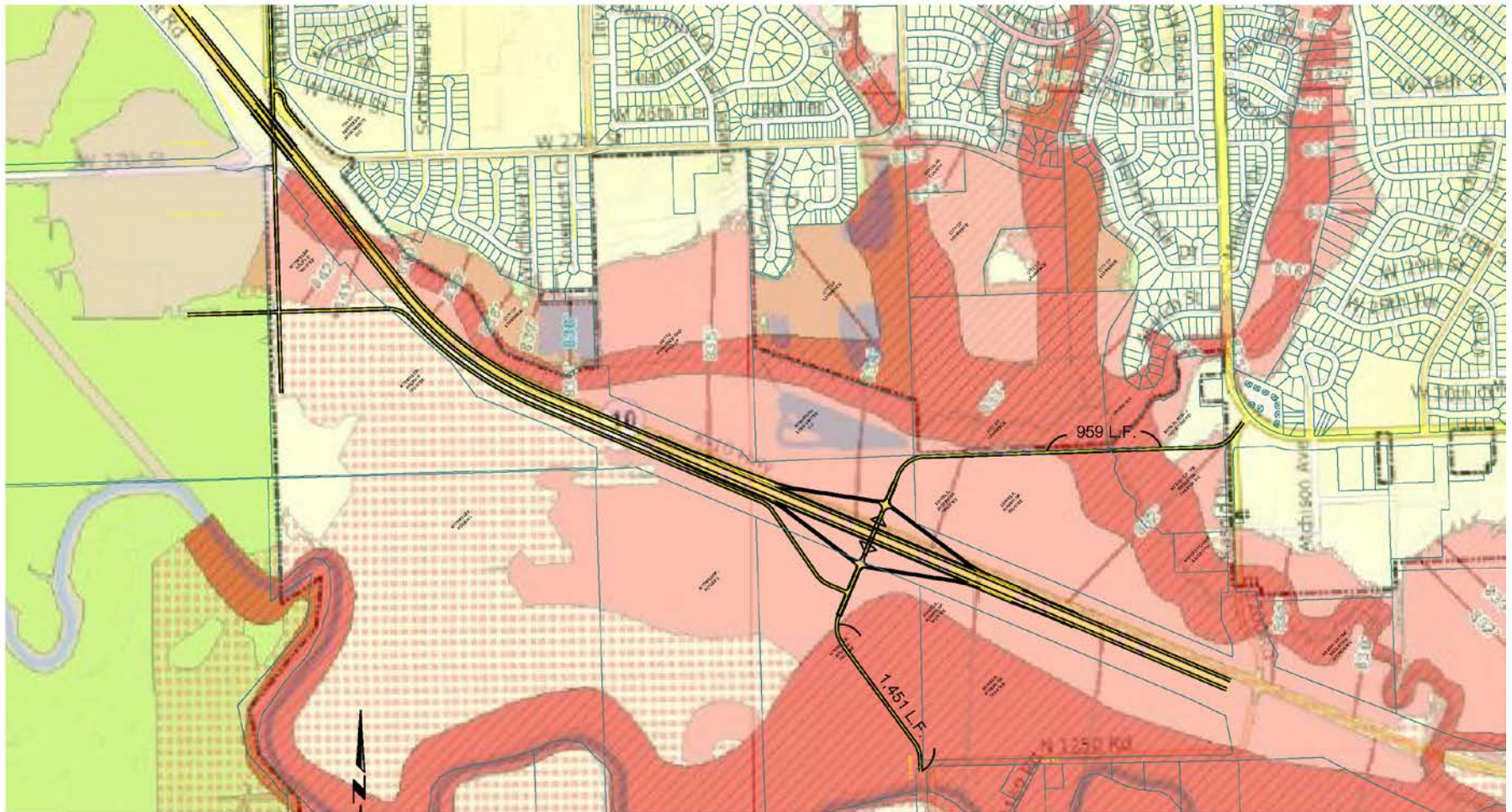
Lawrence, KS • Kansas City, MO • The Woodlands, TX  
1310 Wakarusa Drive, Suite 100  
Lawrence, Kansas 66049  
785.843.7350(p) | 785.843.2410(f)  
info@landplan-pe.com | www.landplan-pe.com



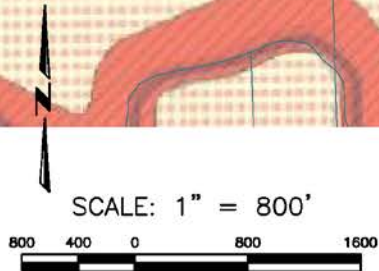
Lawrence, KS • Kansas City, MO • The Woodlands, TX  
 1310 Wakarusa Drive, Suite 100  
 Lawrence, Kansas 66049  
 785.845.7530(p) | 785.843.2410(f)  
 info@landplan-pa.com | www.landplan-pa.com



TOTAL=12,335 L.F.



Lawrence, KS • Kansas City, MO • The Woodlands, TX  
 1310 Wakarusa Drive, Suite 100  
 Lawrence, Kansas 66049  
 785.843.7530(s) | 785.843.2410(r)  
[info@landplan-pa.com](mailto:info@landplan-pa.com) | [www.landplan-pa.com](http://www.landplan-pa.com)



TOTAL=2,410 L.F.



Mary's Lake

N38°55'48"

W 95°12'36"

W 95°1