

A Common Cents Plan for Douglas County



Dear Douglas County Citizens,

On November 8th we will have the opportunity to plan and shape the future of Douglas County for ourselves and for our children.

Douglas County is growing and so are our public needs. These needs include new and upgraded parks and recreational facilities, a new jail, expanded health care facilities, and property tax relief.

A one cent sales tax will provide Douglas County and the citizens of Eudora, Lecompton, Baldwin City and Lawrence with the money needed to improve their public facilities and to build for the future.

A penny buys a lot for Douglas County. We hope that you will study this proposal and lend your support by voting **yes** on November 8th.

Co-chairs:

Shirley Martin-Smith

Shirley Martin-Smith

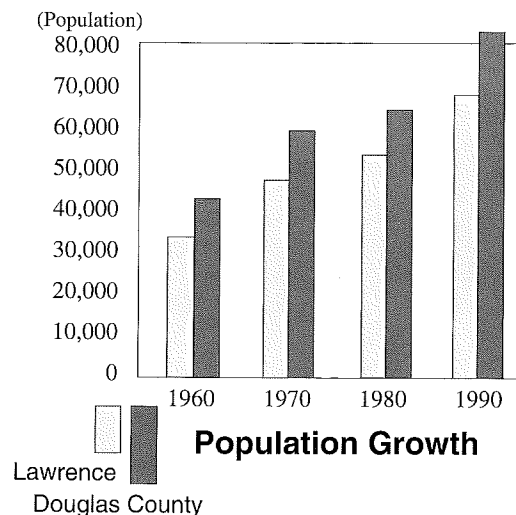
Rex Johnson

Rex Johnson

Terry Riordan MD

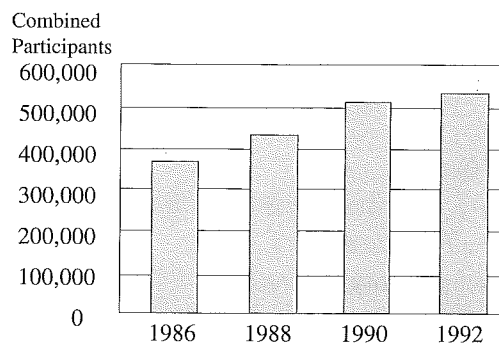
Terry Riordan, MD

Douglas County is growing and so is our need for public facilities



We need more parks and recreational facilities

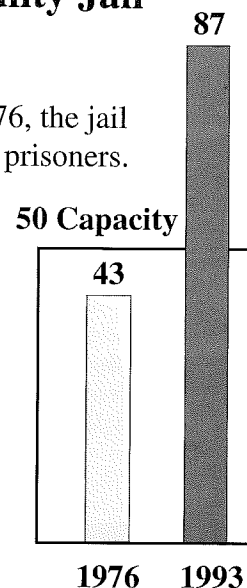
- We have run out of ball diamonds, basket ball courts, recreation center space and swimming facilities.
- Youth baseball teams can't find fields for games or for practice.
- Swimmers practice at 5:30 a.m. because there is no other time available.



Participants in parks and recreation programs

Our Douglas County Jail faces a crisis

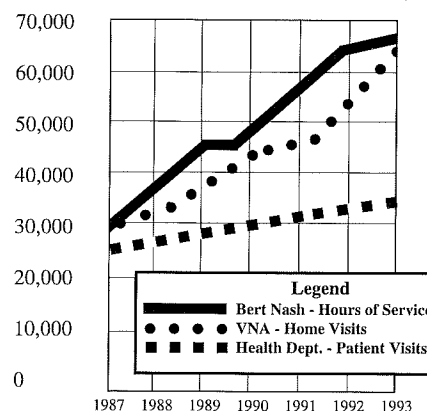
When constructed in 1976, the jail was designed to hold 50 prisoners. In 1993, we averaged 87 prisoners per night. Today, extra prisoners are transferred to other cities and housed at our expense. Other counties with similar problems were forced by the courts to construct new facilities.



The increase in prisoners is nationwide.

Prisoners per 100,000 population	1976	1991
Kansas	91	231
U.S.	123	310

The demand for community-based health services is growing and more space is needed



A Penny Buys a Lot...



1 Parks and Recreation

- An addition to the East Lawrence Community Center.
- A major recreation center with an indoor swimming pool.
- A baseball and softball complex.
- Improvements to the YSI complex.
- Renovation of the municipal pool.
- Community and neighborhood park acquisition.
- Park development - 6 areas.
- A nature and outdoor education center in Prairie Park.
- Bike trail development.
- City entryway landscape improvements.

Cost \$12.2 million

2 Protection.

- New jail with 170 bed capacity.
- An additional 200 parking spaces.

Cost \$11 million

3 Douglas County Visiting Nurses Assn. Lawrence-Douglas County Health Dept. Bert Nash Mental Health Center

- In-home care to persons confined to their home or who choose to stay at home.
- Immunizations and preventive care for preschool and school-age children.
- Assistance to expectant mothers with limited incomes.
- Counseling services to persons needing help with family and personal problems.

Cost \$8.2 million

4 Property Tax Relief

- A two mill reduction by Douglas County and a five mill reduction by the City of Lawrence.
- Property taxes on an \$80,000 home in Lawrence will go down \$64.40 per year.

Savings \$2.3 million per year

A Sales Tax makes sense for Douglas County

- The sales tax would go into effect on January 1, 1995.
- Anyone making a retail purchase in Douglas County will pay the one cent sales tax. This will include visitors to Douglas County.
- The estimated revenue is \$7 million per year.
- The revenue will be distributed to Douglas County and to the cities of Baldwin City, Eudora, Lawrence and Lecompton according to a formula set by the state legislature.
- Approximately \$350,000 per year will go to Baldwin City, Eudora and Lecompton for public improvements authorized by their city councils.

Our neighboring counties have a sales tax

County	County Sales Tax Rate	City Sales Tax Rate
Douglas		Lawrence -1¢; Baldwin City -1¢; Eudora - none; Lecompton - none
Johnson	.6 cent	All cities - 1 cent
Shawnee	(voting on a 1¢ sales tax in November)	Topeka - 1 cent
Wyandotte	1 cent	All cities have either 1/2¢ or 1¢
Jefferson	1 cent	All cities have either 1/2¢ or 1¢
Franklin	1.5 cents	Ottawa - 1/2¢



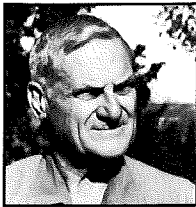
"Our children need more parks and recreation facilities. It's a good investment in their future."
Jan Sheldon, Lawrence



"My mother was cared for by the Visiting Nurses Assn. They provide a wonderful service."
Chris McKenzie, Lawrence



"Everyone talks about property tax relief. Here is an opportunity to do something."
John Pendleton, Route #2, Lawrence



"We face a crisis at the county jail. I hope our citizens will act before a judge forces us to."
Rex Johnson, Lawrence



"I pay a sales tax when I go to neighboring counties. This proposal will ask visitors to pay a county sale tax here".
Bob Walters, Lawrence



"This sales tax will provide more recreational opportunities to kids in all parts of the city".
Willie Amison, Lawrence

Paid for by:
The 4 for 1 Improvements Committee
Joe Kelly, Treasurer
Contributions may be sent to:
4 for 1 Committee
P.O. Box 429
Lawrence, KS 66044

"Our three county health agencies provide a real safety net for persons with limited income. Douglas County can be proud of these services."
Mildred Allen, Baldwin City



4

for

1

A Common Cents Plan for Douglas County

1. Parks
2. Protection
3. Health Care
4. Property Tax Relief



A Penny Sales Tax makes sense for Douglas County.

☒
Vote Yes!