

12" Pine

TEL 15" Pine

15" Pine

30" Oak

3" TRANSITE 12-170V WESTAR EL

4-4" MU

100 PAIR 1-T TEL DIRECT BURY CABLE

8" Hawthorn

15" Pine

15" Pine

Lane Structure Sign

STREET

16+00

17+00

Share The Road Sign

Asphalt

Concrete

Concrete

Ex 8" CHN WL (Per KU Utility)

6" Spruce

6" Spruce

Grass

Grass

6" Oak

6" Sycamore

4" Oak

No Parking Sign

Grass

23.0'

STEWART AVE.

Street/Stop Sign

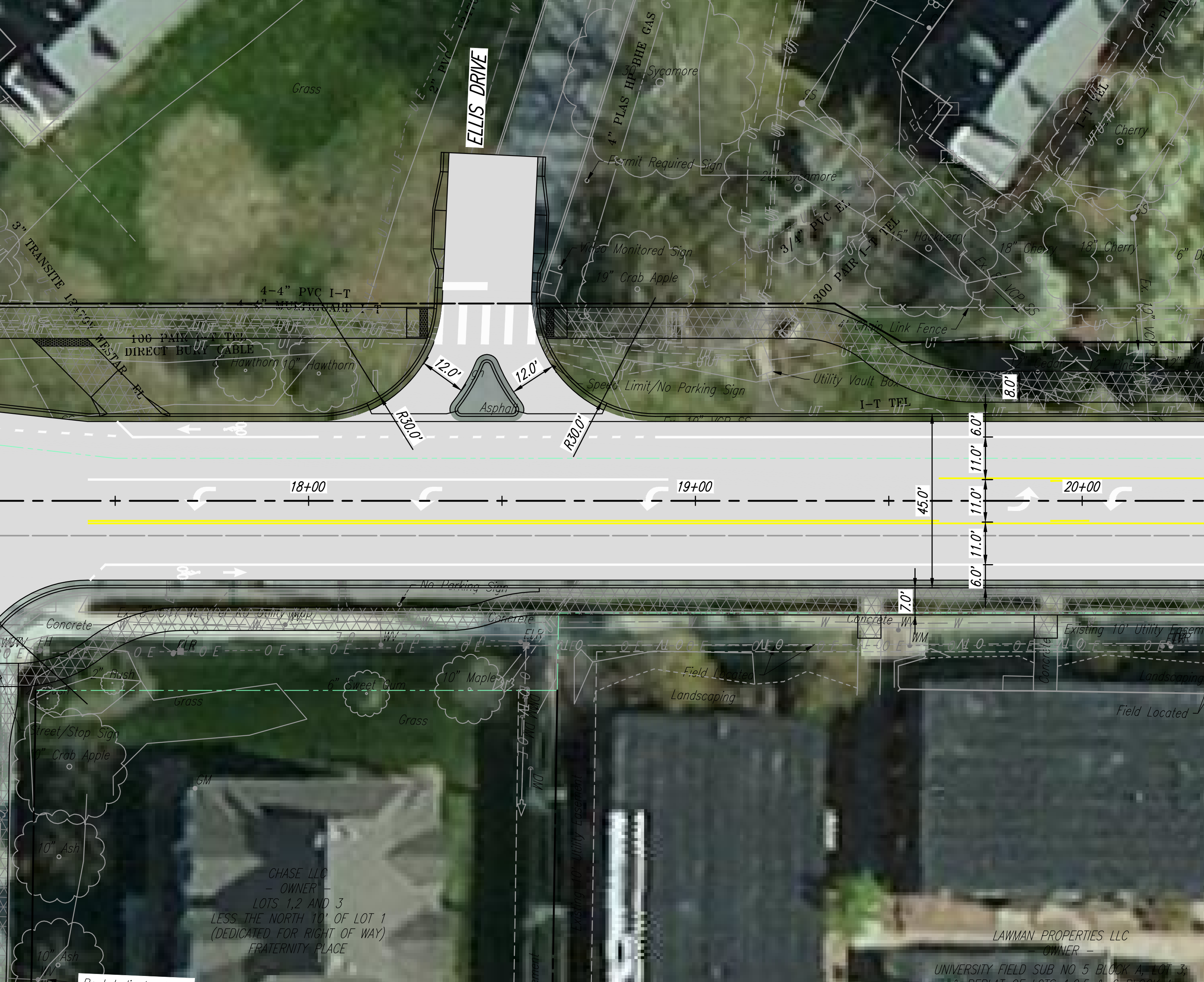
10" Crab Apple

10" Ash

Grass

GM

CHAS  
- OW  
LOTS 1,  
LESS THE NOR



ELLIS DRIVE

Grass

Sycamore

Cherry

100 PAIR I-T TEL  
DIRECT BURY CABLE

10" Hawthorn 10" Hawthorn

Permit Required Sign

Video Monitored Sign

19" Crab Apple

20" Sycamore

3/4" PVC EL

15" Hackberry

18" Cherry

18" Cherry

6" Dogwood

Speed Limit/No Parking Sign

Utility Vault Box

I-T TEL

18+00

19+00

20+00

45.0'

11.0'

11.0'

11.0'

7.0'

Concrete

Concrete

Concrete

Concrete

2" Bush

6" Sweet Gum

10" Maple

Grass

Grass

Field Located

Landscaping

Field Located

Landscaping

Existing 10' Utility Easement

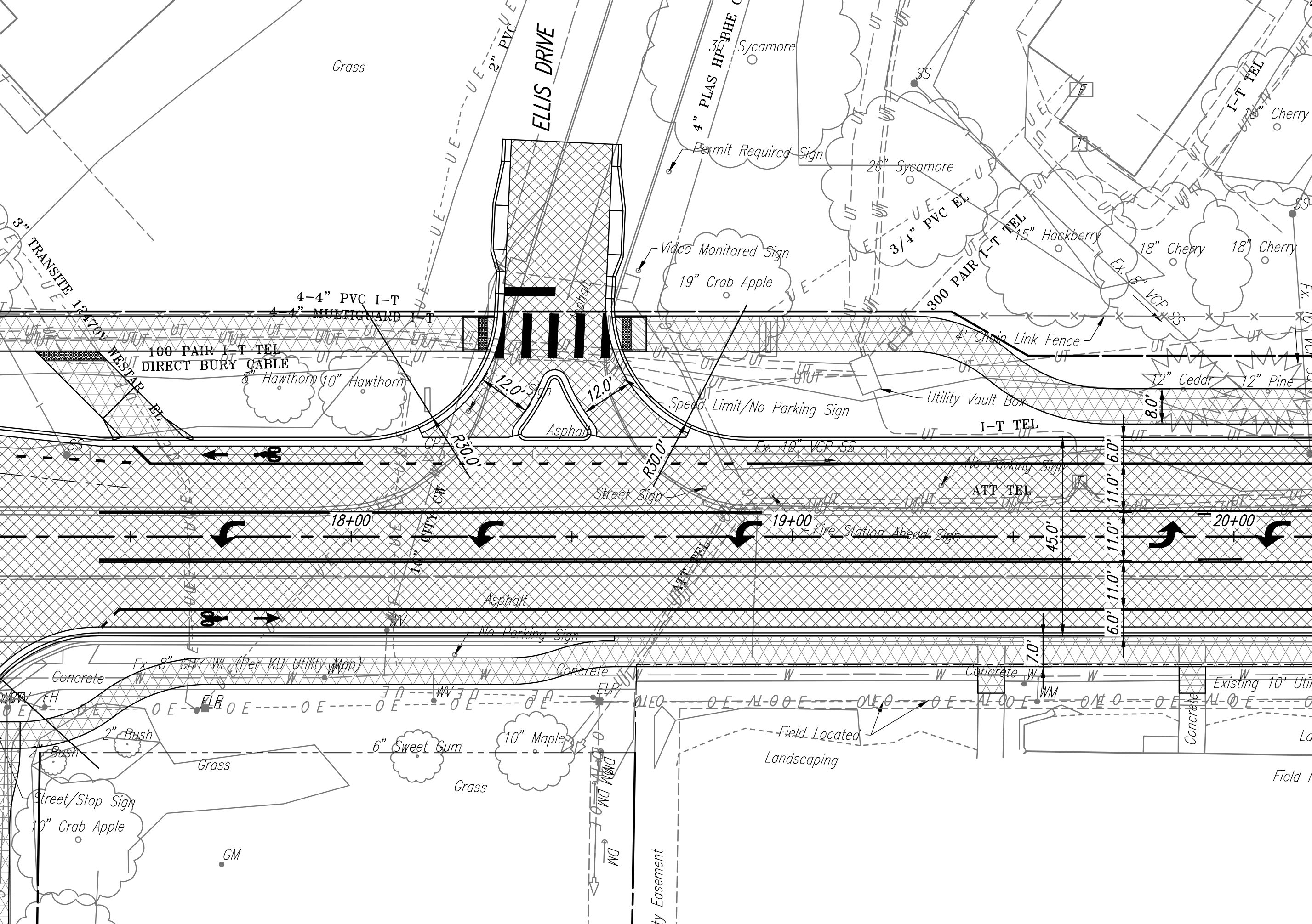
Existing 10' Utility Easement

CHASE LLC  
- OWNER -  
LOTS 1, 2 AND 3  
LESS THE NORTH 10' OF LOT 1  
(DEDICATED FOR RIGHT OF WAY)  
FRATERNITY PLACE

LAWMAN PROPERTIES LLC  
- OWNER -

UNIVERSITY FIELD SUB NO 5 BLOCK A, LOT 3;  
REPLAT OF LOTS 1, 2, 3, 4, 5, 6, 7, 8, 9, 10, 11, 12, 13, 14, 15, 16, 17, 18, 19, 20, 21, 22, 23, 24, 25, 26, 27, 28, 29, 30, 31, 32, 33, 34, 35, 36, 37, 38, 39, 40, 41, 42, 43, 44, 45, 46, 47, 48, 49, 50, 51, 52, 53, 54, 55, 56, 57, 58, 59, 60, 61, 62, 63, 64, 65, 66, 67, 68, 69, 70, 71, 72, 73, 74, 75, 76, 77, 78, 79, 80, 81, 82, 83, 84, 85, 86, 87, 88, 89, 90, 91, 92, 93, 94, 95, 96, 97, 98, 99, 100





Grass

ELLIS DRIVE

Sycamore

Cherry

3" TRANSITE 124701

100 PAIR I-T TEL  
DIRECT BURY CABLE

4-4" PVC I-T

4" MULTIGUARD I-T

8" Hawthorn 10" Hawthorn

Video Monitored Sign

19" Crab Apple

26" Sycamore

3/4" PVC EL

300 PAIR I-T TEL

15" Hackberry

18" Cherry

18" Cherry

4" Chain Link Fence

Utility Vault Box

12" Cedar

12" Pine

Asphalt

Speed Limit/No Parking Sign

I-T TEL

18+00

19+00

20+00

Street Sign

Fire Station Ahead Sign

ATT TEL

Asphalt

No Parking Sign

Concrete

Ex 8" GRV WL (Per KU Utility Map)

Concrete

Concrete

Existing 10' Util

Street/Stop Sign

10" Crab Apple

Grass

6" Sweet Gum

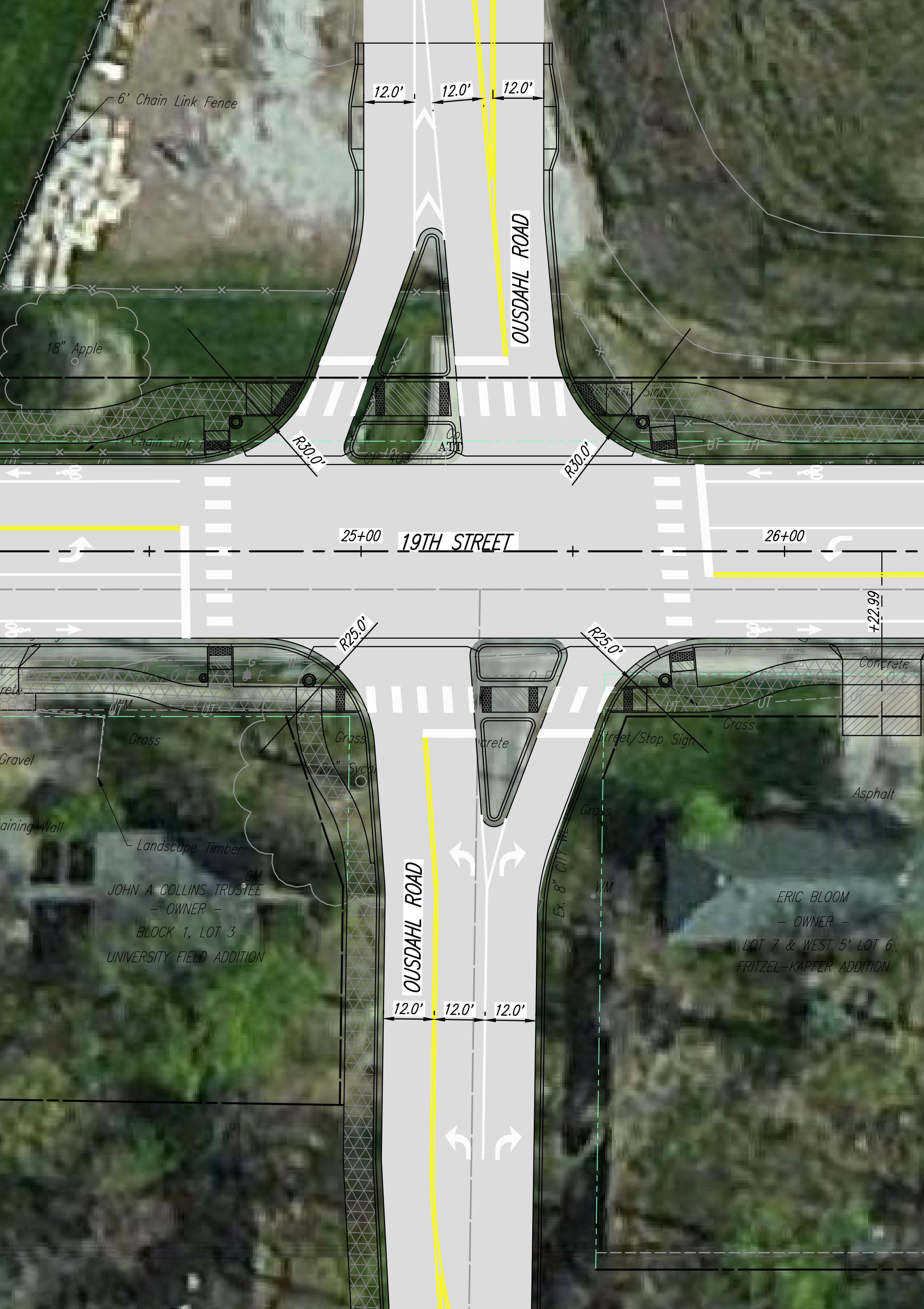
Grass

10" Maple

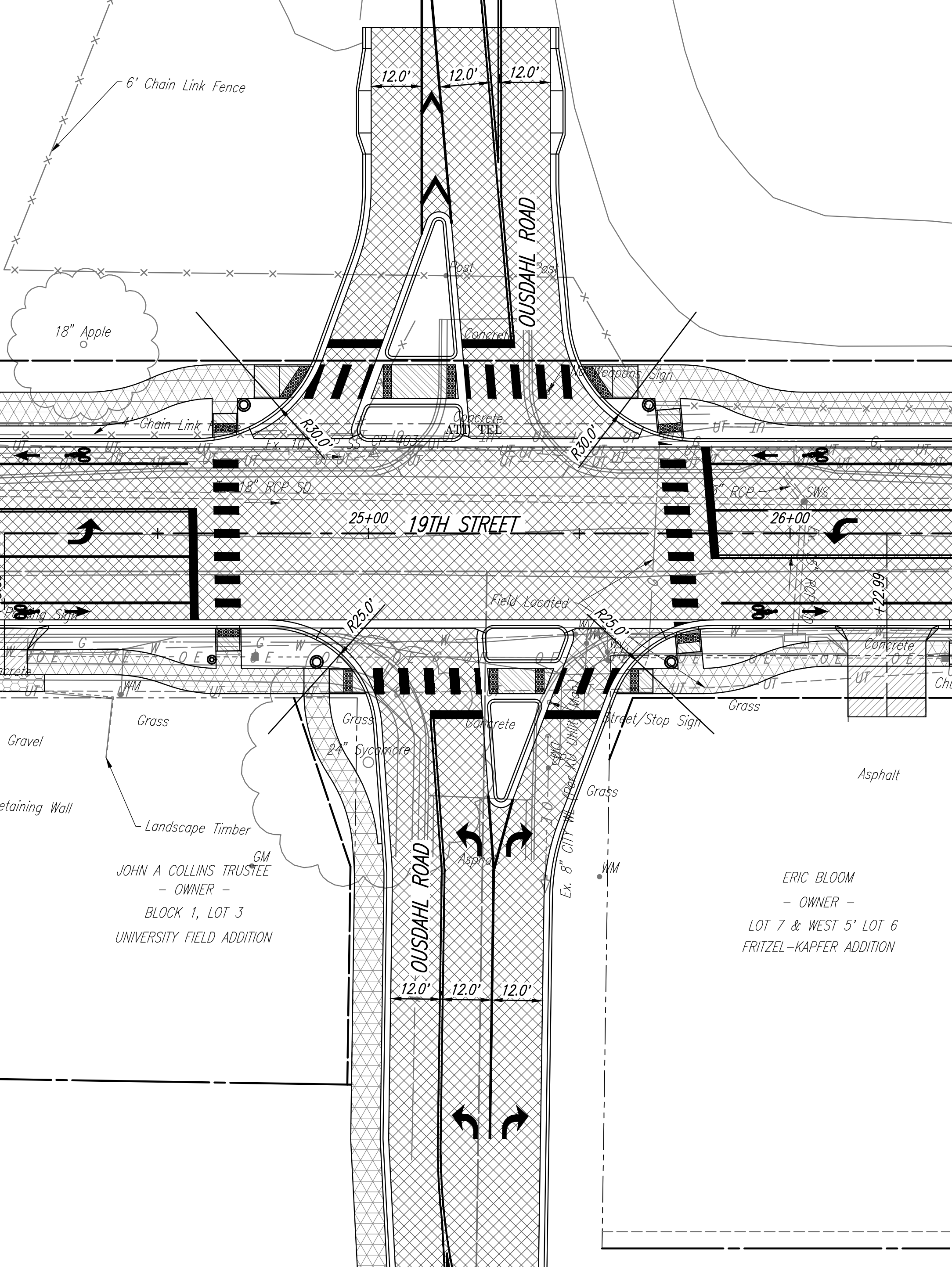
Field Located

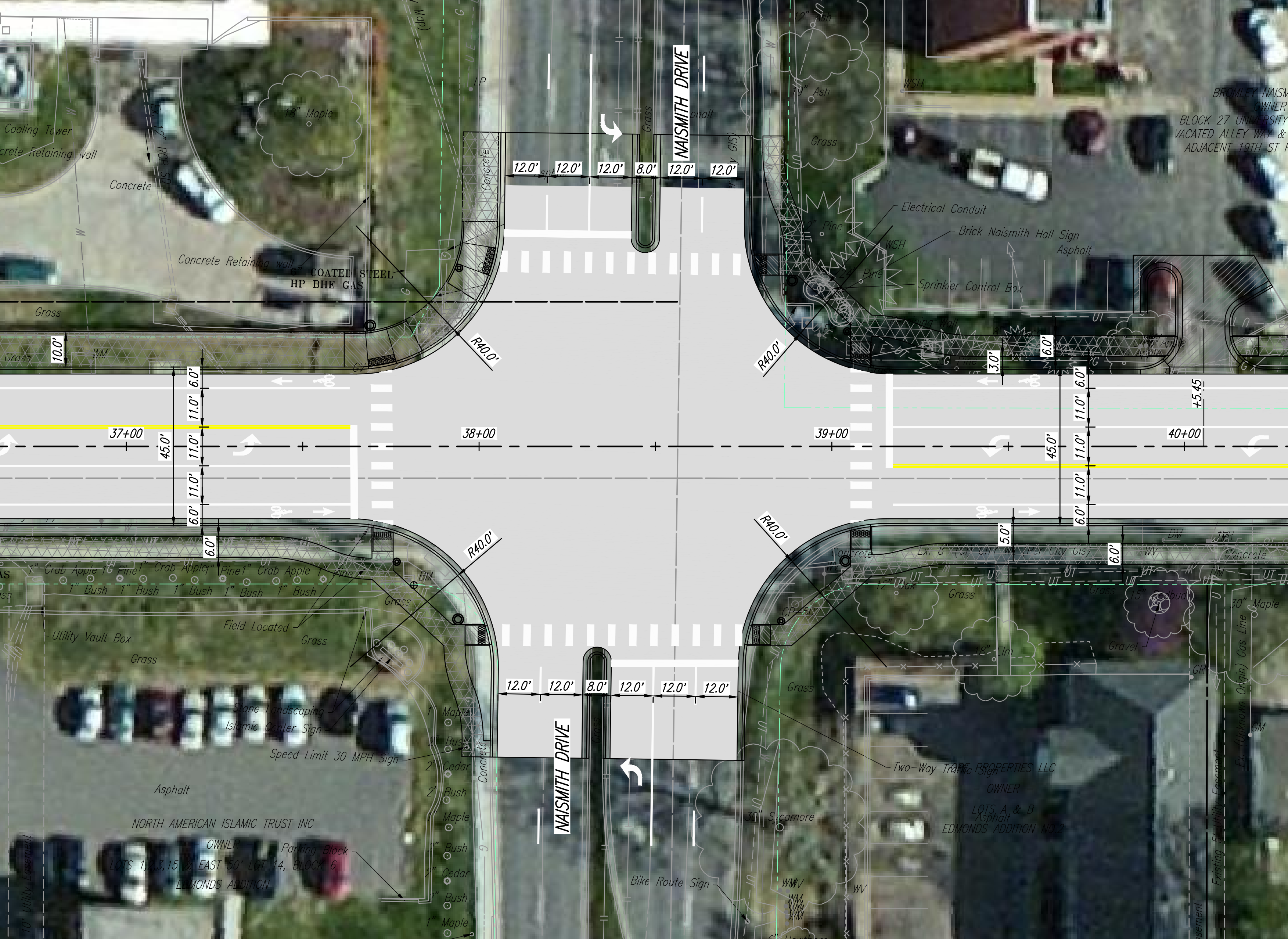
Landscaping

Field L









BROMLEY NAISMITH HALL  
- OWNER -  
BLOCK 27 UNIVERSITY  
VACATED ALLEY WAY &  
ADJACENT 19TH ST

NORTH AMERICAN ISLAMIC TRUST INC  
- OWNER -  
PARKING BLOCK  
LOTS 1, 2, 3, 15 & EAST 50' LOT 14, BLOCK 6  
EDMONDS ADDITION

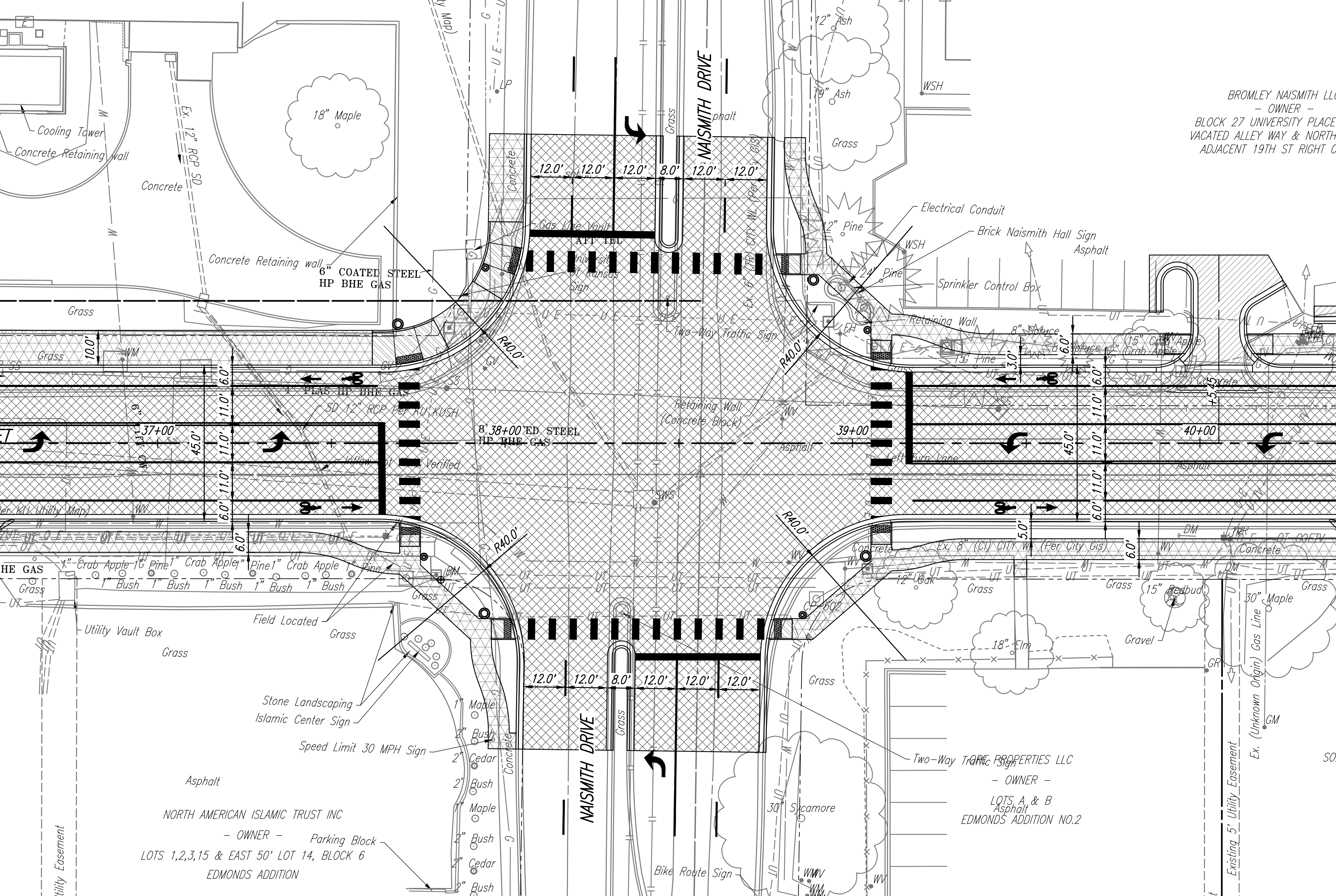
THE PROPERTIES LLC  
- OWNER -  
LOTS A & B  
EDMONDS ADDITION NO. 2

Existing 5' Utility Easement

10' Utility Easement

Easement





BROMLEY NAISMITH LLC  
- OWNER -  
BLOCK 27 UNIVERSITY PLACE  
VACATED ALLEY WAY & NORTH  
ADJACENT 19TH ST RIGHT C

NORTH AMERICAN ISLAMIC TRUST INC  
- OWNER -  
Parking Block  
LOTS 1,2,3,15 & EAST 50' LOT 14, BLOCK 6  
EDMONDS ADDITION

EDMONDS PROPERTIES LLC  
- OWNER -  
LOTS A & B  
Asphalt  
EDMONDS ADDITION NO.2

Existing 5' Utility Easement

Ex. (Unknown Origin) Gas Line

NAISMITH DRIVE

NAISMITH DRIVE

Utility Easement

Cooling Tower  
Concrete Retaining Wall

Ex. 12" RCP SD  
Concrete

Concrete Retaining wall  
6" COATED STEEL  
HP BHE GAS

8' 38+00' ED STEEL  
HP BHE GAS

Electrical Conduit

Brick Naismith Hall Sign  
Asphalt

Sprinkler Control Box

Retaining Wall

Retaining Wall  
(Concrete Block)

Ex. 8" (CI) CITY WL (Per City Gis)

Stone Landscaping  
Islamic Center Sign

Speed Limit 30 MPH Sign

Two-Way Traffic Sign

Bike Route Sign

18" Maple

12" Ash

19" Ash

12" Pine

24" Pine

8" Spruce

15" Pine

15" Crab Apple

15" Crab Apple

15" Redbud

18" Elm

30" Sycamore

30" Maple

15" Redbud

18" Elm

30" Sycamore

30" Maple

15" Redbud

18" Elm

30" Sycamore