

HDR
MISSOURI CERTIFICATE OF
AUTHORITY #: 000856
3741 NE TROON DRIVE
LEE'S SUMMIT, MO 64064
816-347-1100

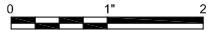
ISSUE	DATE	DESCRIPTION

PROJECT MANAGER	DON LINDEMAN
CIVIL	—
STRUCTURAL	—
ARCHITECTURAL	—
PROCESS	—
MECHANICAL	—
ELECTRICAL	—
INSTRUMENTATION	—
PROJECT NUMBER	00000000227819

Original Figure
Prepared by HDR. Edits
by City of Lawrence.

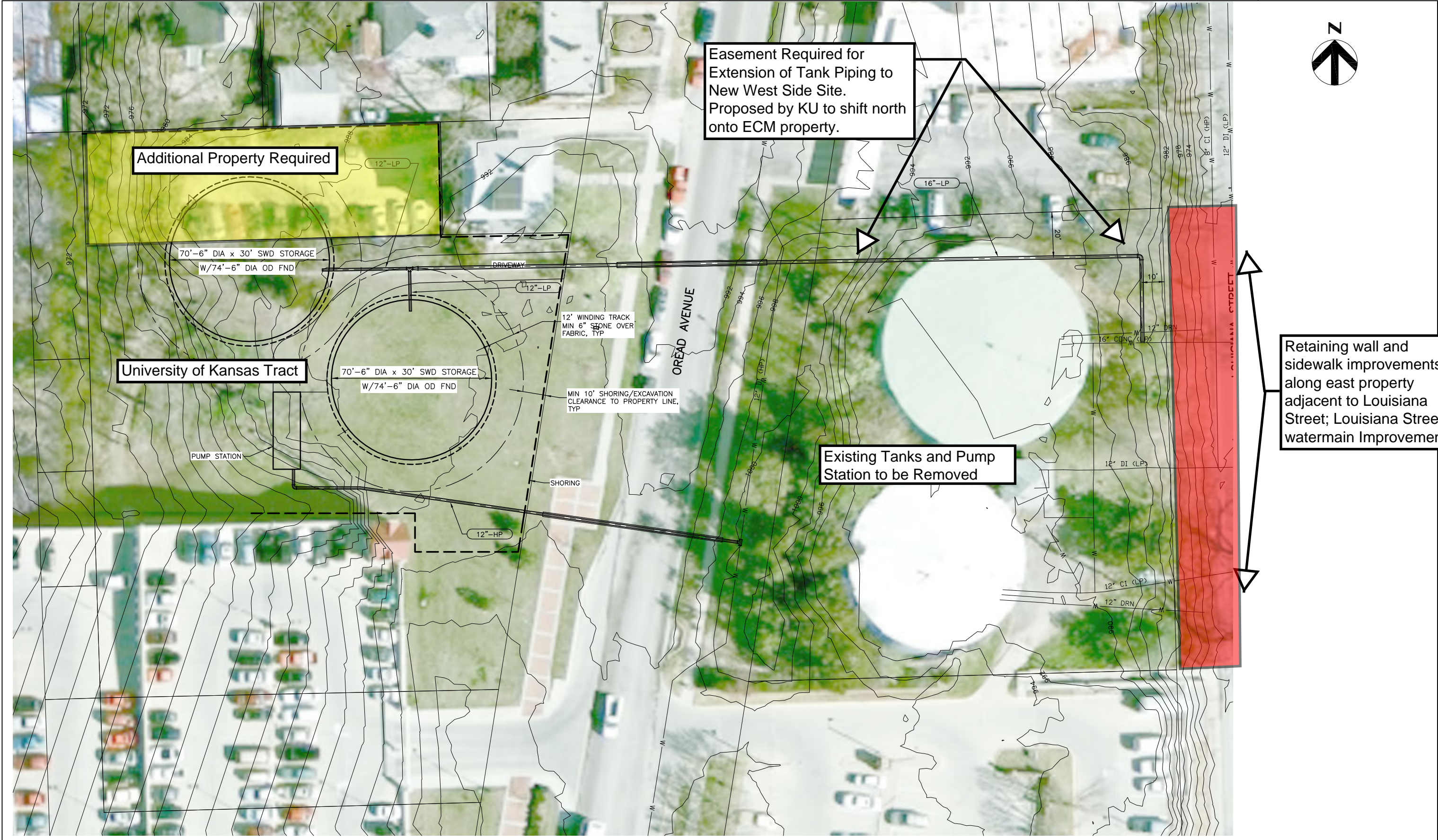


Oread Storage and
Booster Pump Station



ALTERNATIVE 2
WEST PROPERTY
OPTION 1
SITE PLAN

FILENAME 10C101.dwg
SCALE 1"=20'-0"



HDR
MISSOURI CERTIFICATE OF
AUTHORITY #: 000856
3741 NE TROON DRIVE
LEE'S SUMMIT, MO 64064
816-347-1100

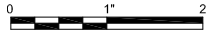
ISSUE	DATE	DESCRIPTION

PROJECT MANAGER	DON LINDEMAN
CIVIL	—
STRUCTURAL	—
ARCHITECTURAL	—
PROCESS	—
MECHANICAL	—
ELECTRICAL	—
INSTRUMENTATION	—
PROJECT NUMBER	00000000227819

Original Figure
Prepared by HDR. Edits
by City of Lawrence.

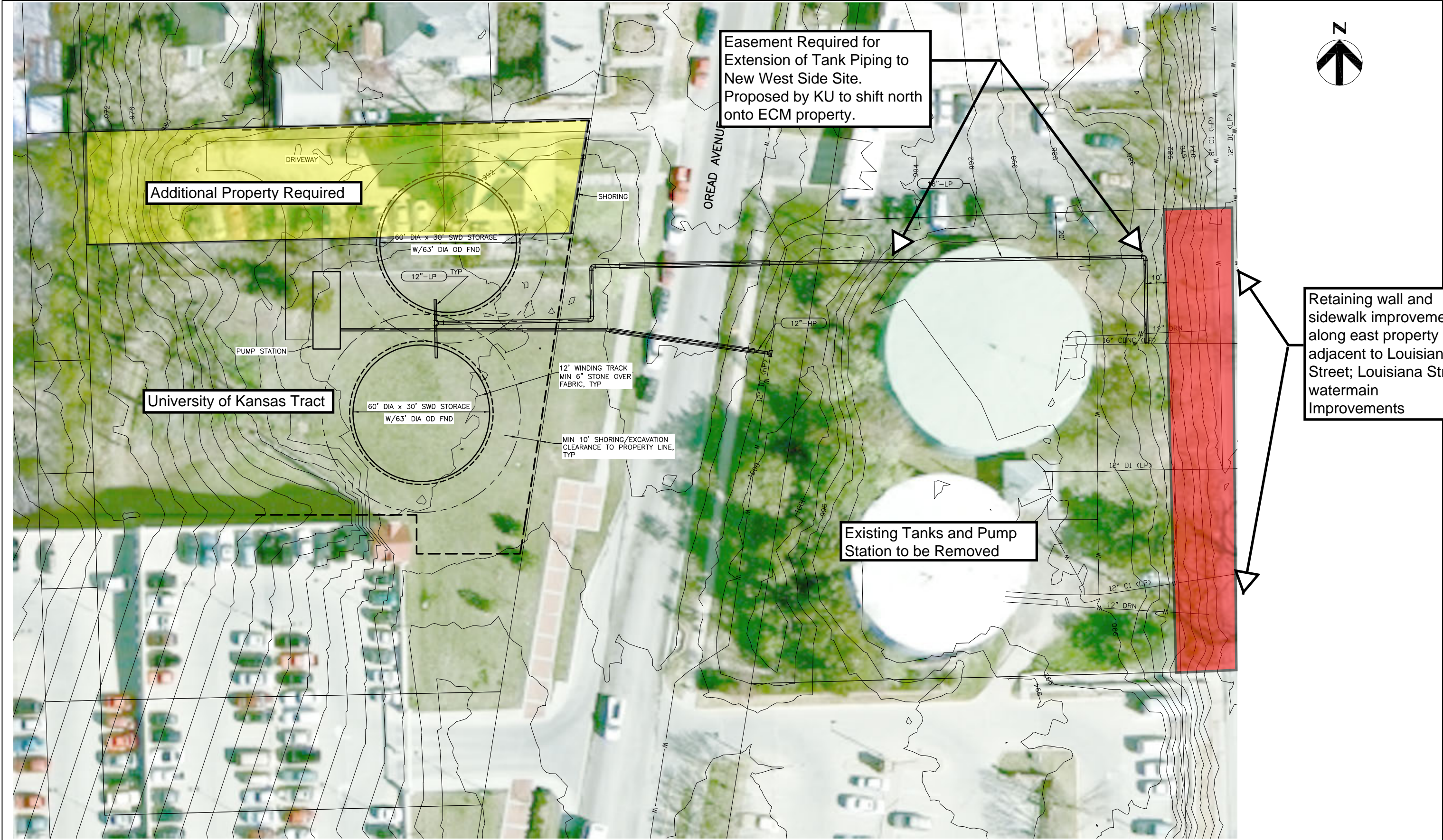


Oread Storage and
Booster Pump Station



ALTERNATIVE 3
WEST PROPERTY
OPTION 2
SITE PLAN

FILENAME | 10C103.dwg
SCALE | 1"=20'-0"



HDR
MISSOURI CERTIFICATE OF
AUTHORITY #: 000856
3741 NE TROON DRIVE
LEE'S SUMMIT, MO 64064
816-347-1100

ISSUE	DATE	DESCRIPTION

PROJECT MANAGER	DON LINDEMAN
CIVIL	—
STRUCTURAL	—
ARCHITECTURAL	—
PROCESS	—
MECHANICAL	—
ELECTRICAL	—
INSTRUMENTATION	—
PROJECT NUMBER	00000000227819

Original Figure
Prepared by HDR. Edits
by City of Lawrence.



Oread Storage and
Booster Pump Station



ALTERNATIVE 4
WEST PROPERTY
OPTION 3
SITE PLAN

FILENAME | 10C104.dwg
SCALE | 1"=20'-0"