

Planning and Development Services



City of Lawrence

PDS Divisions

- Planning (city/unincorp. county)**
 - Long Range Planning – Comp Plan, Neigh. Plans, and Special Projects**
 - Current Planning - Rezoning, Platting, and BZA**
 - Historic Resources – Design Review, Education**
 - Transportation (MPO) (entire county)**
-

PDS Divisions Cont.

- Building Safety (city)**
 - Building Code review**
 - Building inspections**
 - Code Enforcement (city)**
 - City code enforcement / Rental Program**
 - Community Development - CDBG and HOME (city)**
 - Small Business Facilitator Programs (city/county)**
-

PDS Applications Submitted in 2014

Planning Applications	561
Code Enforcement Cases	1,630
Building Safety: Permits	1,930
Contractor/Trades Licenses	953
Rental Licenses	1,724
Inquiries/Investigations	752
Total	7,550
Structure Inspections	6,962

Commissions Staffed

- **City Commission**
- **County Commission**
- **Planning Commission**
- **Board of Zoning Appeals**
- **Historic Resources Commission**
- **Homeless Issues Advisory Committee**
- **Ad hoc KU/City design committees**

Commissions Staffed Cont.

- Community Development Advisory Committee**
- Contractor Licensing Board**
- 4 Building Code advisory boards**
- H2020 Steering Committee**
- Oread Design Guideline Committee**

Codes We Administer

- Land Development Code**
- Subdivision Regulations**
- Sign code**
- ICC suite of Building Codes**
- Property Maintenance Code**
- Historic Resources Code (Chapter 22)**

Recent and Current Issues

- Business Friendly processes and codes**
- Horizon 2020 Update**
- BizFuel – small business support**
- Oread Design Guidelines**
- Multi-modal transportation plans**
- Rental program expansion**
- Sign code revisions**

Division Budgets

- **Planning** **\$1,131,000**
- **Building Safety** **\$675,650**
- **Code Enforcement** **\$758,170**
- **Total** **\$2,564,820**

- **Community Development – Grant Funded**
- **MPO – 80/20 grant to local match**

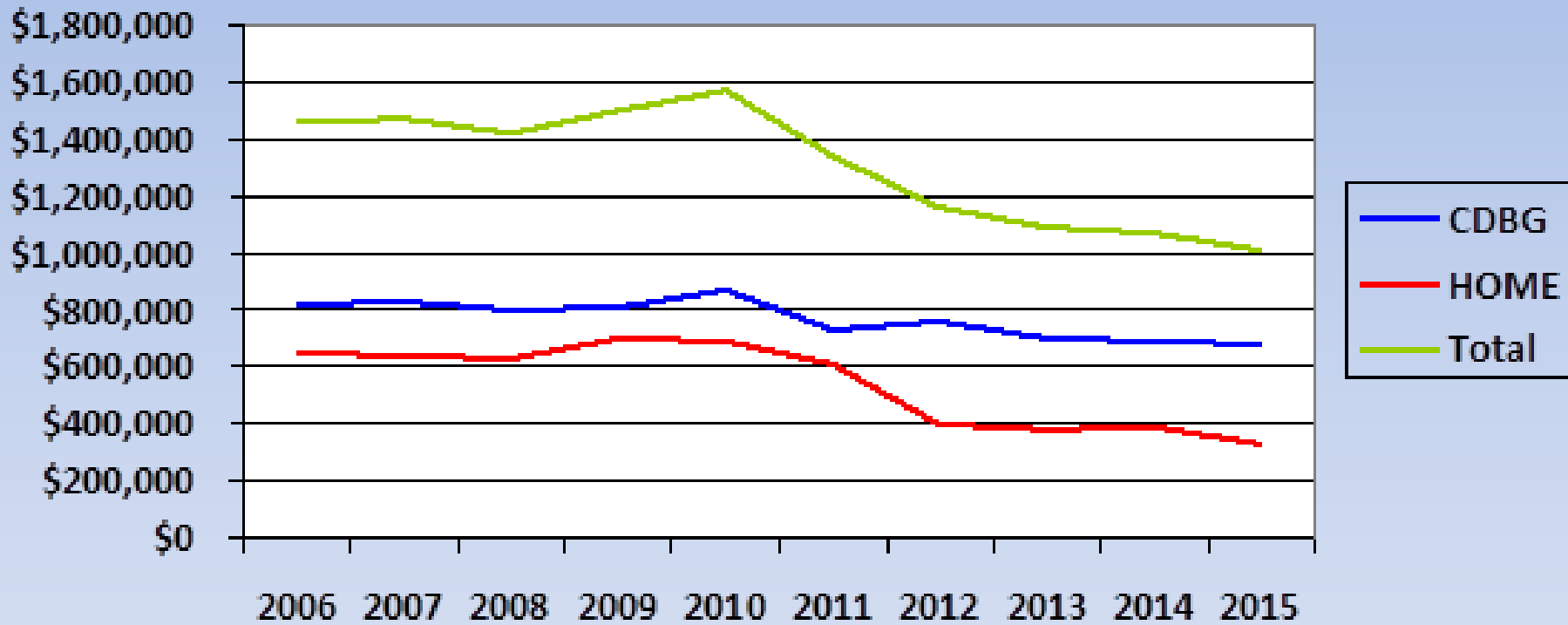
PDS Revenues

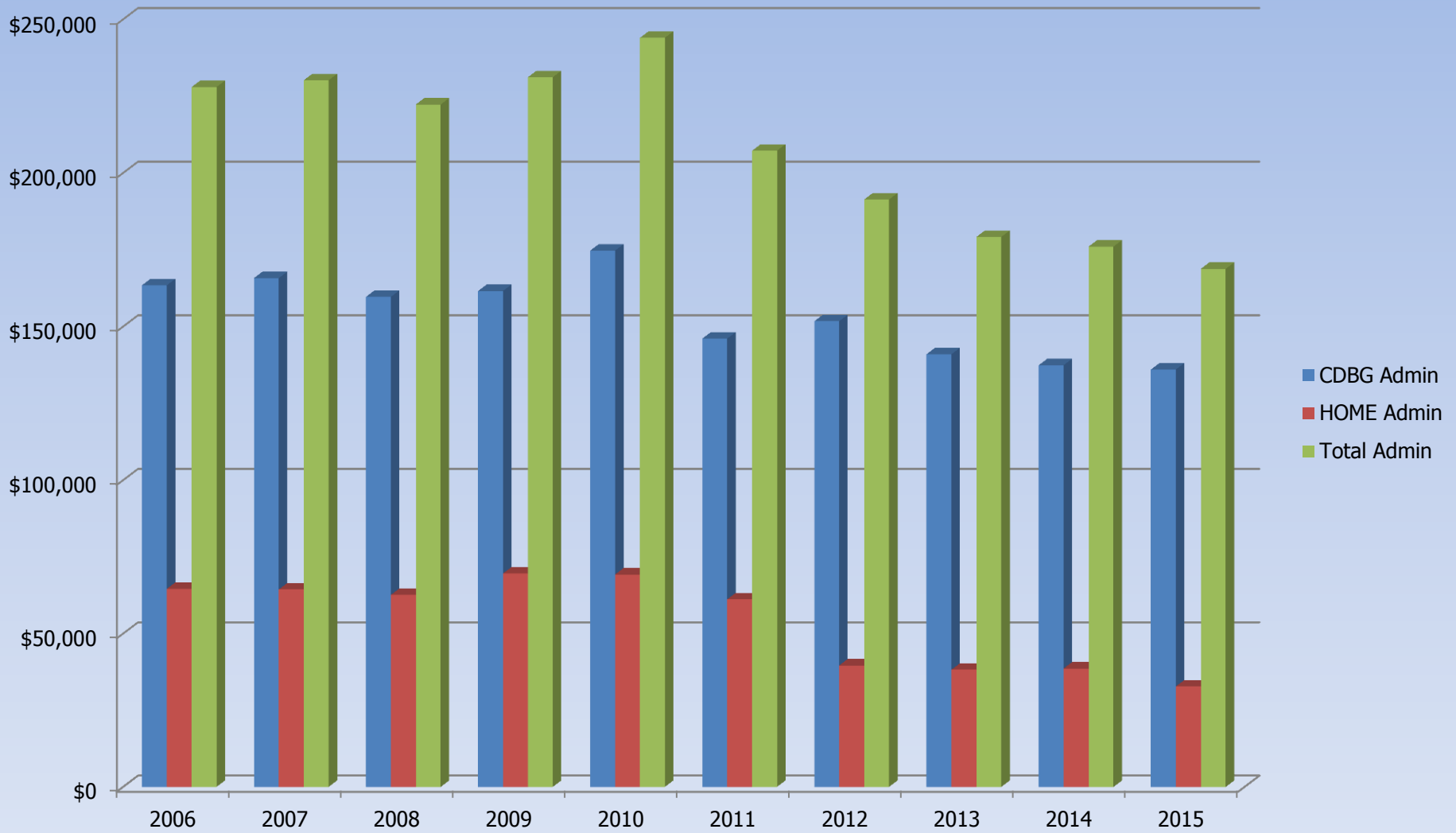
- **Planning applications – \$18,244**
- **Building permit and licensing fees - \$782,248**
- **Code Enforcement fines – \$5,815**

Total - \$806,307

Budget Issues

- **Reduced federal CDBG and HOME funds**
- **Reduced use of KDOT toll credits for MPO funding**
- **Vehicle maintenance costs and replacement**
- **Comprehensive Plan follow up studies and publishing**





Web Resources

- Department Website –
<http://www.lawrenceks.org/pds>
- 2014 PDS Annual Report-
<http://www.lawrenceks.org/pds/AnnualReports>
- 2014 Rental Report -
<http://www.lawrenceks.org/pds/rental-licensing/reports>