

## **Conclusion of Environs Analysis of 1004 Connecticut Street, August Wahl House**

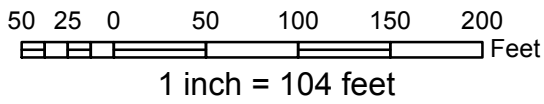
### ***Conclusion***

The Environs for the 1004 Connecticut Street, the August Wahl House, should be reviewed in the following manner. The Environs should be one area (see attached map) and the following standards applied:

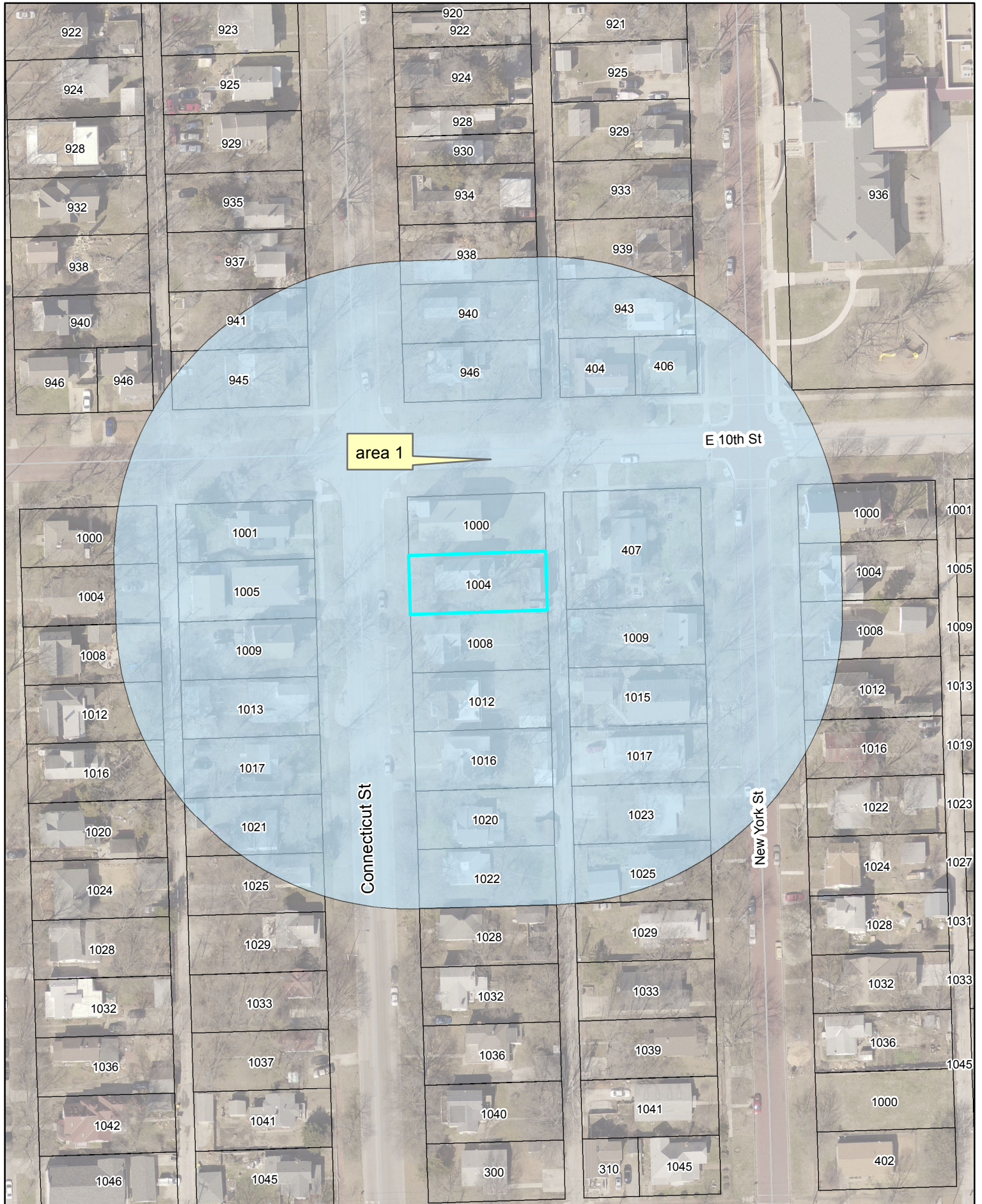
Area 1: Maintaining the existing structures and visual appearance of the environs is the primary focus of review. Main structure demolitions would be approved only if documentation was provided that indicated that the structure was unsound and/or a certificate of economic hardship was approved.

Minor projects (minor additions, porch remodeling, window and door changes, demolition of outbuildings, etc.) will be approved administratively by the Historic Resources Administrator. All design elements are important. The proposed alteration or construction should meet the intent of the Secretary of the Interior Standards for Rehabilitation, the Standards and Guidelines for Evaluating the Effect on Project on Environs, and the Criteria set forth in 22-205.

Major projects (major additions, new infill construction, major alterations, etc.) would be reviewed by the Historic Resources Commission. All design elements are important. The proposed alteration or construction should meet the intent of the Secretary of the Interior Standards for Rehabilitation, the Standards and Guidelines for Evaluating the Effect on Project on Environs, and the Criteria set forth in 22-205.



# 1004 Connecticut Street





# 1004 Connecticut Street Existing Environs



The map displays a grid of lots with the following lot numbers:

- Top row: 904, 905, 904, 905
- Row 2: 908, 909, 908, 909
- Row 3: 910, 913, 912, 913
- Row 4: 916, 919, 916, 917
- Row 5: 922, 923, 920, 921
- Row 6: 924, 925, 924, 925
- Row 7: 928, 929, 928, 929
- Row 8: 932, 935, 934, 933
- Row 9: 938, 937, 938, 939
- Row 10: 940, 941, 940, 943
- Row 11: 946, 945, 946, 404, 406
- Row 12: 1000, 1001, 1000, 407
- Row 13: 1004, 1005, 1004, 1009
- Row 14: 1008, 1009, 1008, 1015
- Row 15: 1012, 1013, 1012, 1017
- Row 16: 1016, 1017, 1016, 1023
- Row 17: 1020, 1021, 1020, 1025
- Row 18: 1024, 1025, 1022, 1025
- Row 19: 1028, 1029
- Row 20: 1032, 1033

Streets shown: Connecticut St, New York St, E 10th St.

Scale: 1 inch = 104 feet. Scale bar shows 0, 25, 50, 100, 150, 200 feet.

North arrow pointing up.

Red-shaded area: A large red circle and a red rectangle highlighting a specific lot (1004).

Blue-shaded area: A blue rectangle on the left side of the map, possibly representing a park or a specific lot.

