

Memorandum

City of Lawrence

City Manager's Office

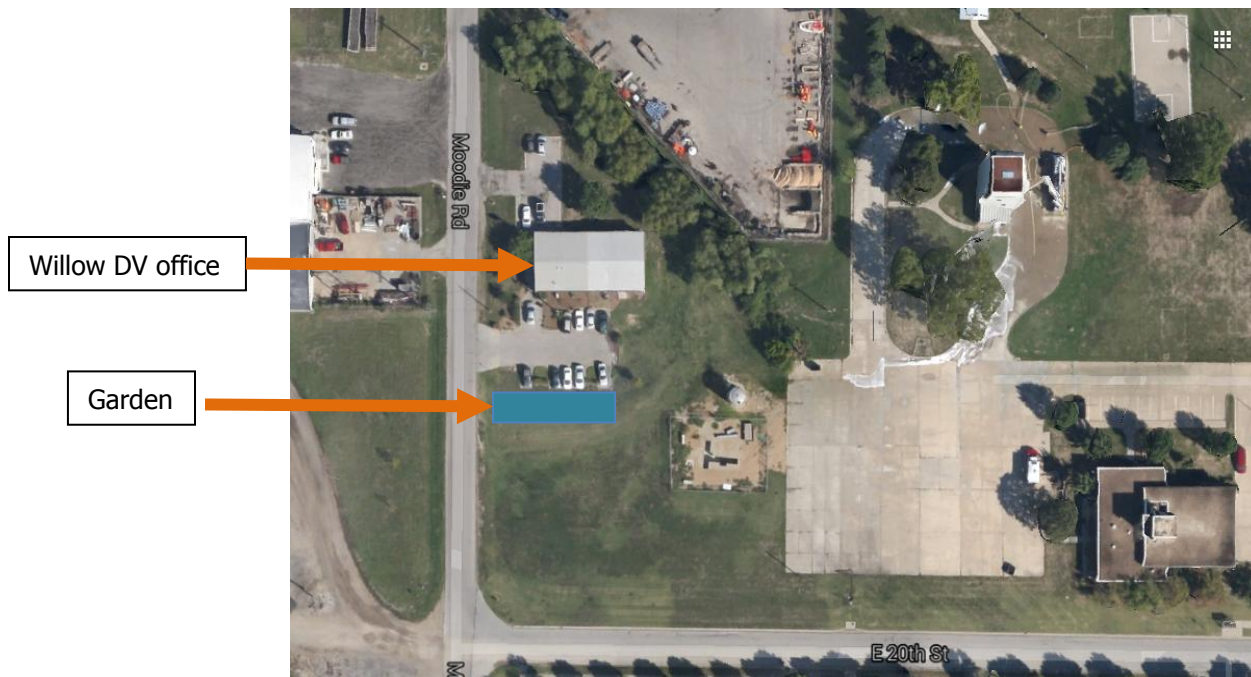
TO: Dave Corliss

FROM: Eileen Horn, Sustainability Coordinator

Date: April 1, 2014

RE: Land licenses for Common Ground Program 2014 – Willow Ctr.

The City received a request from the Willow Domestic Violence Center to establish a community garden at their 1920 Moodie Rd. location. The Willow DV Center currently leases this location from the city of Lawrence. They work with hundreds of individuals and families yearly, and provide many basic essentials such as clothing, personal care items, and other material assistance. They receive non-perishable food donations from the community, and are interested in supplementing these donations with fresh fruits and vegetables from their own garden. The garden will be managed by Willow staff and community volunteers.



This will bring the total Common Ground Program properties to eight sites managed by ten growers/community organizations.

Recommendation: Authorize the City Manager to execute a license for the use of city property for agricultural use in the Common Ground Program for: Willow Domestic Violence Center at 1920 Moodie Rd.