



MEMORANDUM

FROM : Paul Werner Architects
TO : City Commissioners
RE : Rock Chalk Park - Trails
DATE : March 31, 2014

Please refer to attachments for trail locations, construction methods and lengths.

Goal:

When trails are complete a trail loop of 3.1 miles will be provided.

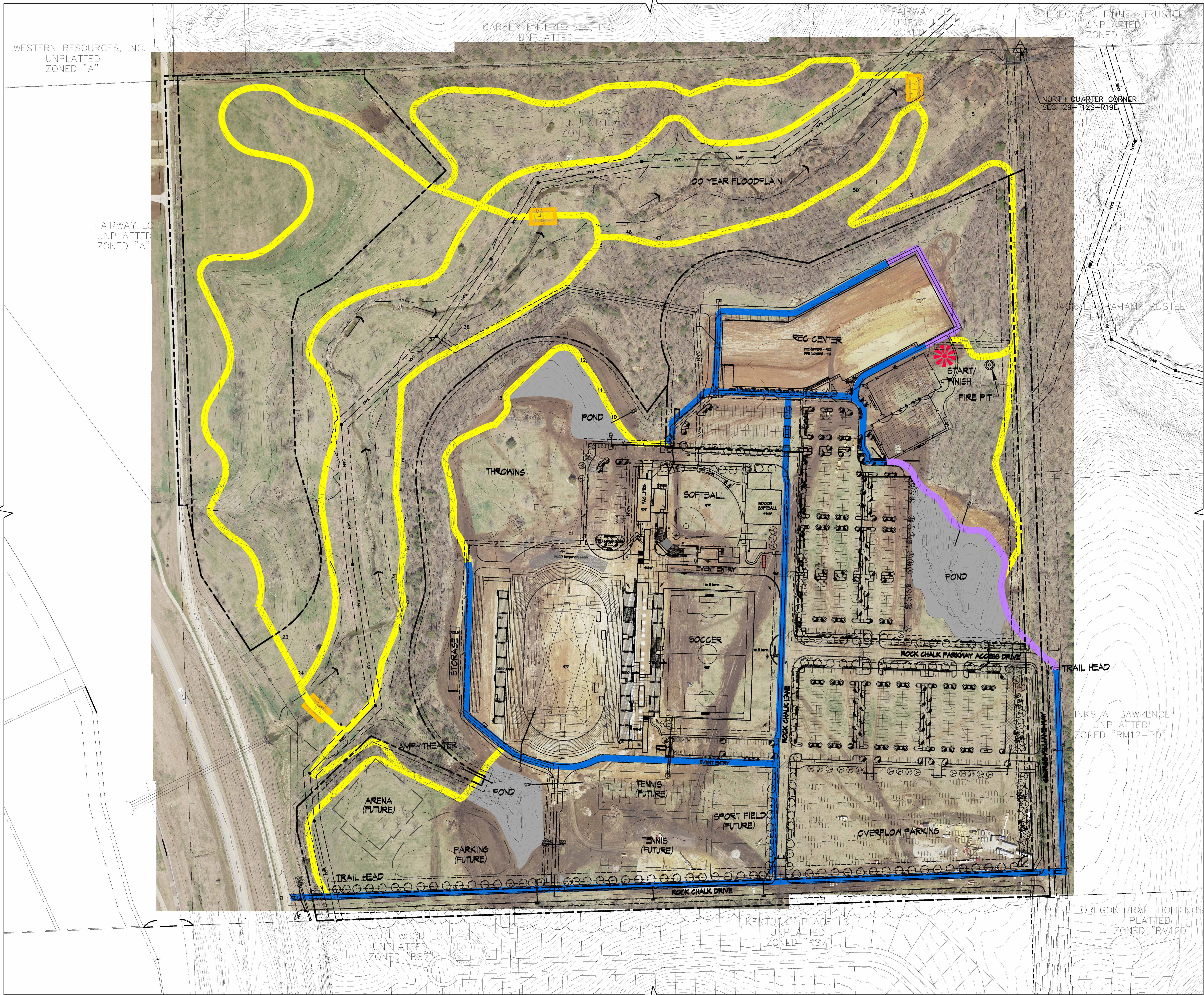
Attachments:

- Sheet 1 – Overall Trail Location
- Sheet 2 – 3.29 Mile Loop
- Sheet 3 – 3.40 Mile Loop
- Sheet 4 – 1.47 Mile Loop
- Sheet 5 – 1.13 Mile Loop
- Sheet 6 – 1.71 Mile Loop
- Sheet 7 – 0.84 Mile Loop

Description of Construction:

- **EXISTING CONCRETE REC. PATH: (Blue)**
10' Rec path per approved public improvement plans.
- **NEW 10' WIDE X 6" DEEP CONCRETE PATH: (Purple)**
Concrete to be 4,000 psi fiber mesh mix with no other reinforcing. Control joints to be placed @ 8'-0" o.c., isolation joints to be placed adjacent to existing concrete. Paths are not intended to meet ADA standards and shall follow existing grades. Paths to be placed on top of rolled existing soil after scarifying the top +/-3" of organic material.
- **NEW TRAIL:**
Trail to be 6" of non-compacted crushed asphalt. Asphalt to be rolled after placement. Trail to follow existing contours and be placed on top of rolled existing soil after scarifying the top +/-3" of organic material. Paths are not intended to meet ADA standards and shall follow existing grades.

- **LOW WATER CROSSING: (Orange)**
(3) 24" HDPE pipes with 6" minimum depth concrete cap matching grades of Rec path. Provide rip-rap at inlet and outlet pipes. Details of this construction being coordinated with Matt Bond, city of Lawrence Stormwater Engineer. Crossings are not intended to meet ADA standards and shall follow existing grades.
 - **FIRE PIT:**
Fire pit to have outside dimensions of approximately 8' x 8' with natural limestone blocks of varying sizes approximately 14" - 28" in height.
 - **TRAIL WIDTH:**
All trails to be 8' to 10' wide. Trails to be narrowed to +/- 6' due to slopes/grade, trees or other natural impediments
 - **TRAIL CONSTRUCTION:**
The KU endowment trail located directly behind the athletic uses will be built immediately due to Kansas Relays. Other trail alignments will be under construction shortly after the KU endowment trail however, the low later crossings will be constructed after approval from the Kansas Department of Wildlife and Parks, Kansas Department of Water Resources and the City of Lawrence have been received.
-



LEGEND

- EXISTING CONCRETE REG. PATH:**
10' REG PATH PER APPROVED PUBLIC IMPROVEMENT PLANS
- NEW 10' WIDE X 6" DEEP CONCRETE PATH:**
CONCRETE TO BE 4,000 PSI FIBER MESH MIX WITH NO OTHER REINFORCING. CONTROL JOINTS TO BE PLACED @ 8'-0" O.C., ISOLATION JOINTS TO BE PLACED ADJACENT TO EXISTING CONCRETE. PATHS ARE NOT INTENDED TO MEET ADA STANDARDS AND SHALL FOLLOW EXISTING GRADES. PATHS TO BE PLACED ON TOP OF ROLLED EXISTING SOIL AFTER SCARIFYING THE TOP 1/3" OF ORGANIC MATERIAL.
- NEW TRAIL:**
TRAIL TO BE 6" OF NON-COMPACTED CRUSHED ASPHALT. ASPHALT TO BE ROLLED AFTER PLACEMENT. TRAIL TO FOLLOW EXISTING CONTOURS AND BE PLACED ON TOP OF ROLLED EXISTING SOIL AFTER SCARIFYING THE TOP 1/3" OF ORGANIC MATERIAL. PATHS ARE NOT INTENDED TO MEET ADA STANDARDS AND SHALL FOLLOW EXISTING GRADES.
- LOW WATER CROSSING:**
(3) 24" HDPE PIPES WITH 6" MINIMUM DEPTH CONCRETE CAP MATCHING GRADES OF REG PATH. PROVIDE RIP-RAP AT INLET AND OUTLET PIPES. CROSSINGS ARE NOT INTENDED TO MEET ADA STANDARDS AND SHALL FOLLOW EXISTING GRADES.
- FIRE PIT:**
FIRE PIT TO HAVE OUTSIDE DIMENSIONS OF APPROXIMATELY 8' X 8' WITH NATURAL LIMESTONE BLOCKS OF VARYING SIZES APPROXIMATELY 14" - 28" IN HEIGHT.
- TRAIL WIDTH:**
ALL TRAILS TO BE 8' TO 10' WIDE. TRAILS TO BE NARROWED TO 4'-6' DUE TO SLOPES/GRADE, TREES OR OTHER NATURAL IMPEDIMENTS
- TRAIL CONSTRUCTION:**
THE KU ENDOWMENT TRAIL LOCATED DIRECTLY BEHIND THE ATHLETIC USES WILL BE BUILT IMMEDIATELY DUE TO KANSAS RELAYS. OTHER TRAIL ALIGNMENTS WILL BE UNDER CONSTRUCTION SHORTLY AFTER THE KU ENDOWMENT TRAIL HOWEVER, THE LOW WATER CROSSINGS WILL BE CONSTRUCTED AFTER APPROVAL FROM THE KANSAS DEPARTMENT OF WILDLIFE AND PARKS, KANSAS DEPARTMENT OF WATER RESOURCES AND THE CITY OF LAWRENCE HAVE BEEN RECEIVED.

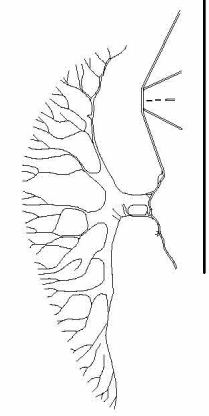
RELEASE
1.0 - REVIEW SET
1.1 - REVIEW SET

SCALE: 1" = 150'-0"



Civil Engineering
Landscape Architecture
Community Planning
Surveying

1310 Wakarusa Drive
Lawrence, KS 66049
tel: (785) 843-7530
fax: (785) 843-2410
email: landplan@aol.com



Landplan Engineering, P.A.

paulwerner
ARCHITECTS

123 W. 8TH STREET
SUITE B2
LAWRENCE, KS 66044

OFFICE: 785.832.0804
FAX: 785.832.0890

goulddevans

706 Massachusetts St.
Lawrence, KS 66044
p: 785-330-7054
f: 785-842-3830

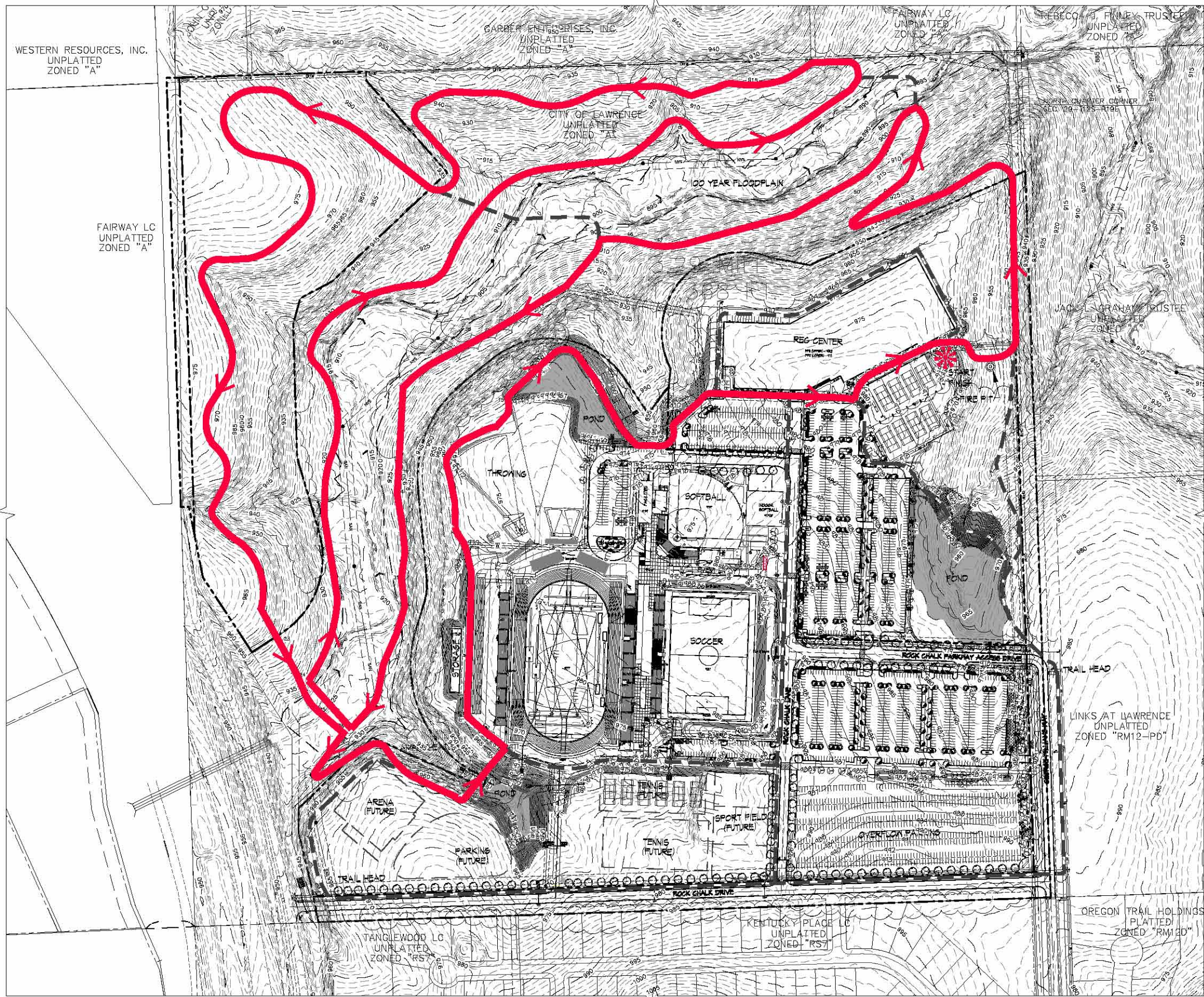
OWNER:
RCP, LLC
PO BOX 328
LAWRENCE, KS 66044

PAUL WERNER ARCHITECTS, L.L.C.
THIS DRAWING IS COPYRIGHTED WORK BY
PAUL WERNER ARCHITECTS, L.L.C. THIS
DRAWING MAY NOT BE PHOTOGRAPHED,
TRACED OR COPIED IN ANY MANNER
WITHOUT THE WRITTEN PERMISSION OF PAUL
WERNER ARCHITECTS, L.L.C.

ROCK CHALK PARK
TRAIL CONSTRUCTION
GEORGE WILLIAMS WAY
LAWRENCE, KANSAS

PROJECT # 212-140

RELEASE: DATE:
1.0 3.20.14
1.1 3.28.14



LEGEND

3.24 MILES (17,368 FEET)

GOAL: WHEN TRAILS ARE COMPLETE
A TRAIL LOOP OF 3.1 MILES WILL BE
PROVIDED.



Civil Engineering
Landscape Architecture
Community Planning
Surveying



Landplan Engineering, P.A.

1310 Waterloo Drive
Lawrence, Kansas 66049
Tel: (785) 832-0804
Fax: (785) 832-0804
Email: landplan@aol.com

paulwerner
ARCHITECTS

123 W. 8TH STREET
SUITE B2
LAWRENCE, KS 66044

OFFICE: 785.832.0804
FAX: 785.832.0800

goulddevans

706 Massachusetts St.
Lawrence, KS 66044
P: 785-330-7054
F: 785-842-3830

OWNER:
RCP, LLC
PO BOX 926
LAWRENCE, KS 66044

PAUL WERNER ARCHITECTS, LLC
THIS DRAWING IS COPYRIGHTED WORK. BY
PAUL WERNER ARCHITECTS, LLC. THIS
DRAWING MAY NOT BE REPRODUCED,
TRADED OR COPIED IN ANY MANNER
WITHOUT THE WRITTEN PERMISSION OF PAUL
WERNER ARCHITECTS, LLC.

ROCK CHALK PARK
TRAIL CONSTRUCTION
GEORGE WILLIAMS WAY
LAWRENCE, KANSAS

PROJECT # 212-140

RELEASE:	DATE:
1.0	3.20.14
1.1	3.28.14



LEGEND

1.47 MILES (7,791 FEET)



Civil Engineering
Landscape Architecture
Community Planning
Surveying



Landplan Engineering, P.A.

paulwerner
ARCHITECTS
123 W. 8TH STREET
SUITE B2
LAURENCE, KS 66044
OFFICE: 785.832.0804
FAX: 785.832.0800

goulddevans

706 Massachusetts St.
Lawrence, KS 66044
P: 785-330-7054
F: 785-842-3830

OWNER:
RCP, LLC
PO BOX 926
LAURENCE, KS 66044

PAUL WERNER ARCHITECTS, LLC
THIS DRAWING IS COPYRIGHTED WORK BY
PAUL WERNER ARCHITECTS, LLC. THIS
DRAWING MAY NOT BE REPRODUCED,
TRACED OR COPIED IN ANY MANNER
WITHOUT THE WRITTEN PERMISSION OF PAUL
WERNER ARCHITECTS, LLC.

**ROCK CHALK PARK
TRAIL CONSTRUCTION**
GEORGE WILLIAMS WAY
LAURENCE, KANSAS

PROJECT # 212-140

RELEASE:	DATE:
1.0	3.20.14
1.1	3.28.14



LEGEND

1.13 MILES (5,969 FEET)



Civil Engineering
Landscape Architecture
Community Planning
Surveying



Landplan Engineering, P.A.
1310 Waterloo Drive
Lawrence, Kansas 66049
Phone: 785.832.0804
Fax: 785.832.0890
email: landplan@eo.com

paulwerner
ARCHITECTS
123 W. 8TH STREET
SUITE B2
LAWRENCE, KS 66044
OFFICE: 785.832.0804
FAX: 785.832.0890

goulddevans
706 Massachusetts St.
Lawrence, KS 66044
P: 785-330-7054
F: 785-842-3830

OWNER:
RCP, LLC
PO BOX 928
LAWRENCE, KS 66044

PAUL WERNER ARCHITECTS, LLC
THIS DRAWING IS COPYRIGHTED WORK BY
PAUL WERNER ARCHITECTS, LLC. THIS
DRAWING MAY NOT BE REPRODUCED,
TRADED OR COPIED IN ANY MANNER
WITHOUT THE WRITTEN PERMISSION OF PAUL
WERNER ARCHITECTS, LLC.

ROCK CHALK PARK
TRAIL CONSTRUCTION
GEORGE WILLIAMS WAY
LAWRENCE, KANSAS

PROJECT # 212-140
RELEASE: 1.0 DATE: 3.20.14
1.1 3.26.14

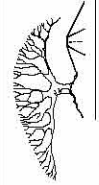


LEGEND

1.71 MILES (9,017 FEET)



Civil Engineering
Landscape Architecture
Community Planning
Surveying



Landplan Engineering, P.A.

paulwerner
ARCHITECTS

123 W. 8TH STREET
SUITE B2
LAWRENCE, KS 66044

OFFICE: 785.832.0804
FAX: 785.832.0890

goulddevans

706 MASSACHUSETTS ST.
LAWRENCE, KS 66044
P: 785-330-7054
F: 785-842-3830

OWNER:
RCP LLC
PO BOX 928
LAWRENCE, KS 66044

PAUL WERNER ARCHITECTS, LLC
THIS DRAWING IS COPYRIGHTED WORK BY
PAUL WERNER ARCHITECTS, LLC. THIS
DRAWING MAY NOT BE REPRODUCED,
TRACED OR COPIED IN ANY MANNER
WITHOUT THE WRITTEN PERMISSION OF PAUL
WERNER ARCHITECTS, LLC.

**ROCK CHALK PARK
TRAIL CONSTRUCTION**
GEORGE WILLIAMS WAY
LAWRENCE, KANSAS

PROJECT # 212-140

RELEASE: LO DATE: 3.20.14
11 3.28.14

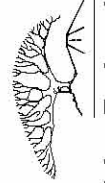


LEGEND

0.84 MILES (4,443 FEET)



Civil Engineering
Landscape Architecture
Community Planning
Surveying
1310 Waterusa Drive
Lawrence, Kansas 66048
Tel: (785)843-7530
Fax: (785)843-2410
Email: landplan@paulwerner.com



paulwerner
ARCHITECTS
123 W. 8TH STREET
SUITE 62
LAWRENCE, KS 66044
OFFICE: 785.832.0804
FAX: 785.832.0890

gouldevans
708 Massachusetts St
Lawrence, KS 66044
P: 785-330-7064
F: 785-842-3830

OWNER:
RCP, LLC
PO BOX 928
LAWRENCE, KS 66044

PAUL WERNER ARCHITECTS, LLC
THIS DRAWING IS COPYRIGHTED WORK BY
PAUL WERNER ARCHITECTS, LLC. THIS
DRAWING MAY NOT BE REPRODUCED,
TRADED OR COPIED IN ANY MANNER
WITHOUT THE WRITTEN PERMISSION OF PAUL
WERNER ARCHITECTS, LLC.

**ROCK CHALK PARK
TRAIL CONSTRUCTION**
GEORGE WILLIAMS WAY
LAWRENCE, KANSAS

PROJECT # 212-140

RELEASE:	DATE:
1.0	3.20.14
1.1	3.20.14