

#### **AGENDA: TSC 1/6/14**

ITEM NO. 4: Consider request to install a PEDESTRIAN HYBRID BEACON on Haskell Avenue at Pinecone Drive.

##### **Staff Report:**

1. Haskell Avenue is classified as a "minor arterial" street, paved 30 feet wide and a posted speed limit of 30mph.
2. Traffic data collected 12-13 December 2013, found approximately 11,045 vehicles in a 24-hour period with an 85<sup>th</sup> percentile speed of approximately 37.4mph.
3. A comprehensive study of approximately 2000 crosswalks nationwide found that under existing traffic conditions, there is no statistical difference in the crash rate of a marked vs. unmarked crosswalk.
4. Based on the speed of traffic, the width of the street and a walking speed of 3.5 feet/second, there would need to be a gap in traffic of approximately 660 feet in each direction from the intersection (shown as a dotted yellow line) for a pedestrian to safely cross the street.

#### **MINUTES: TSC 1/6/14**

##### ITEM NO. 4:

Consider request to install a Pedestrian Hybrid Beacon on Haskell Avenue at Pinecone Drive.

Woosley reviewed the information provided in the staff report.

##### **Public Comment:**

Drew White, 637 North Street: I have a disability and have to walk from 20<sup>th</sup> & Haskell to 19<sup>th</sup> to cross the street and walk back up to 20<sup>th</sup> to catch the bus on the east side; I cannot walk across the street to the bus stop because I don't want to get hit by passing cars that won't slow down for people that cross the street; people ride the bus to come to Independence Inc. and people from Pinecone Townhomes also cannot cross there to walk their dogs; cars just fly by without watching out for people who are crossing the street to Independence; people have to walk down to the corner to cross the street where the light is at 19<sup>th</sup> & Haskell; that's why I am asking for a crosswalk so that people can cross safely without getting hit; I have seen many crosswalks all over town; people with disabilities need one by Independence Inc.; we have people that come to us for our services in wheelchairs, and many other people; so, I would like to get this approved, if possible.

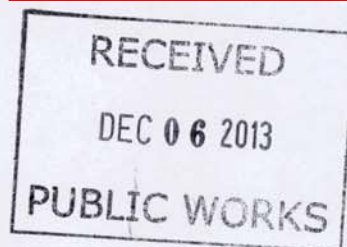
Bob Mikesic, 2620 Kensington Road: I work at Independence Inc.; in addition to the people that leave our center and need to take the bus; even though the safest route is to go down to 19<sup>th</sup>, not everyone does; there are people that just wait for an opening and that's a pretty high rate of speed for traffic on Haskell; also, that's a high population area of people that live in the Pinecone Townhomes and there is a natural interest to

cross the street and go west; there's good sidewalk on 21<sup>st</sup> Street and a way to get to the Burrough's Creek Trail.

Commission Discussion:

Commissioner Russell: I think this is a no-brainer.

**MOTION BY COMMISSIONER RUSSELL, SECOND BY COMMISSIONER HARDEN, TO RECOMMEND INSTALLING A PEDESTRIAN HYBRID BEACON ON HASKELL AVENUE AT PINECONE DRIVE; THE MOTION CARRIED, 7-0.**



December 4, 2013

David P. Crow  
City of Lawrence Traffic Department  
PO Box 708  
Lawrence, KS 66044

Dear David:

We are writing to request that a pedestrian activated traffic signal light be installed so that people can get across Haskell Avenue safely to where the bus stop is located at Pinecone Drive and Haskell Ave. Many people who live in the Pine Town Townhomes and surrounding neighborhood use this bus stop and approach it from various directions.

I and many others cross the street there a lot because it's a long way to 19<sup>th</sup> and Haskell Avenue, where the closest intersection with a light is located. Since the bus stop was closed on 21<sup>st</sup> and Haskell (about 50 feet west of Haskell Avenue on 21<sup>st</sup> Street), many people are approaching the bus stop from the west side of Haskell Avenue.

Please bring this issue to your next meeting for consideration. Thank you for your time and consideration of this matter.

Sincerely,

*Drew White*

Drew White

*Bob Mikesic*

Bob Mikesic  
Deputy Director

**Board Members**

Karen McGrath | *President*    Jay Wachs | *Vice President*    Clark Cropp | *Treasurer*    Athena Johnson | *Secretary*  
Board Members:    Ed Canda    Mary Chappell    Brigid Jensen    Sandra London-Leib    Bruce Passman

**Staff**

Joan LaBelle | *Executive Director*    Jill Enyart | *Chief Operations Officer/In Home Care Director*    Bob Mikesic | *Deputy Director/Advocacy Coordinator*

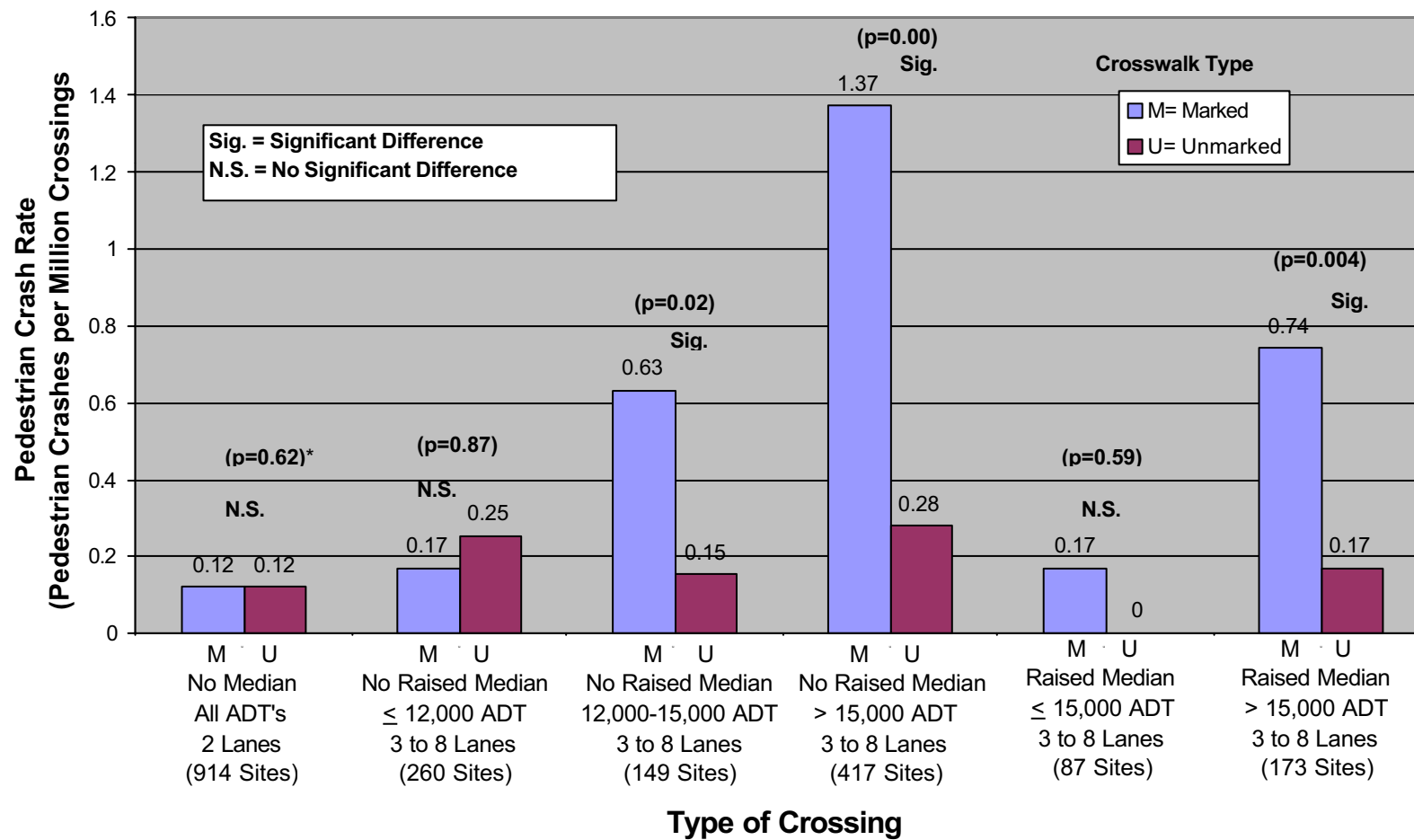
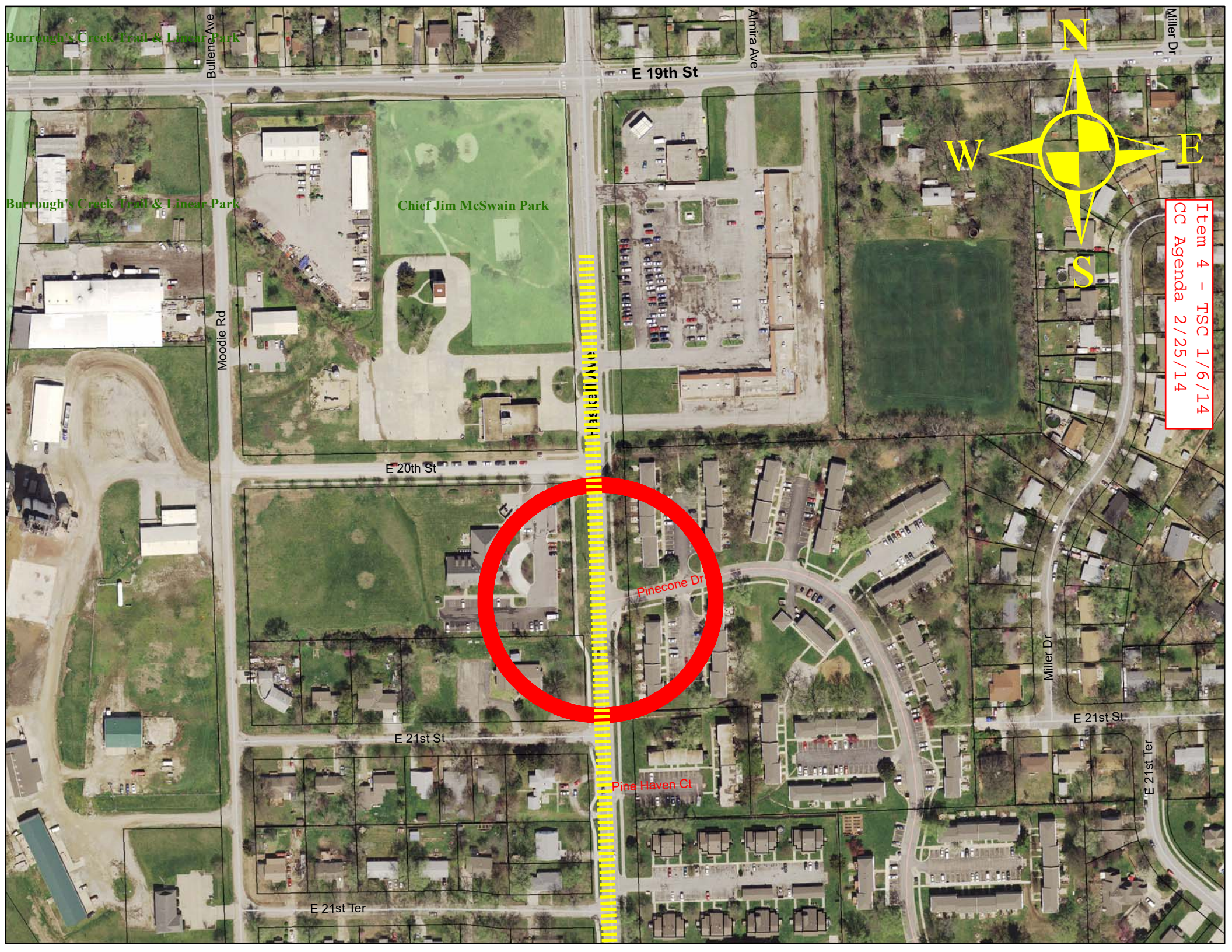


Figure 4. Pedestrian crash rate vs. type of crossing.





Burrough's Creek Trail & Linear Park

Burrough's Creek Trail & Linear Park

Chief Jim McSwain Park

E 19th St

E 20th St

E 21st St

E 21st Ter

Pinecone Dr

Pine Haven Ct



Item 4 - TSC 1/6/14  
CC Agenda 2/25/14