

Memorandum

City of Lawrence

City Manager's Office

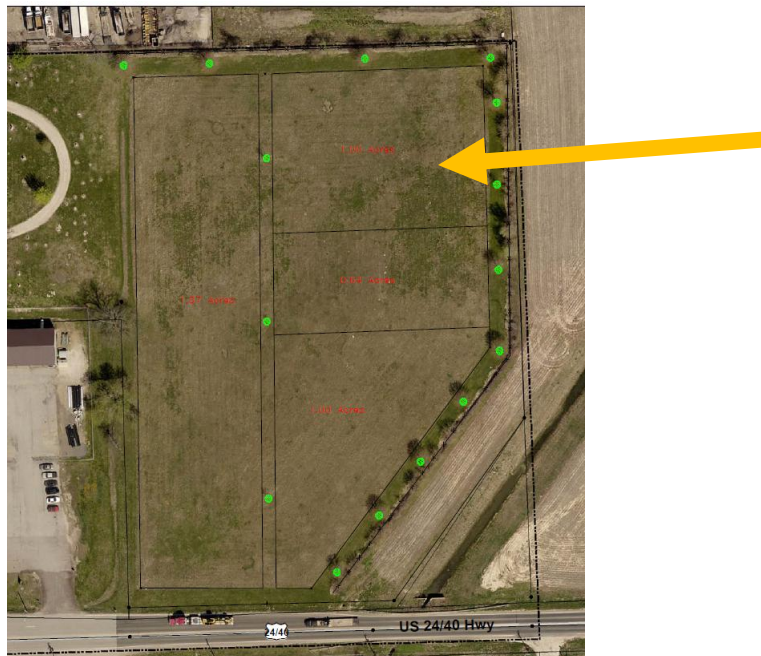
TO: Dave Corliss

FROM: Eileen Horn

Date: February 1, 2014

RE: Land licenses for Common Ground Program 2014

The City received two applications for the 1 acre site at the Maple Grove Incubator Farm site (at 24/40 near Tee Pee Junction). The Food Policy Council reviewed and scored the applications. *The FPC recommends awarding the 1 acre site in the NE corner of the Maple Grove Incubator Farm to Jessi Asmussen and Kevin Prather of Mellowfields Urban Farm.* Jessi and Kevin participated in the program last year, farming 1 acre in the SW corner of the same site. They have proven to be knowledgeable, responsible stewards of the property, and their community benefit plan proposes providing apprenticeships for new farmers, support to Cordley Elementary and Central Middle School's farm-to-school efforts, and donations of produce to Just Food.



This will bring the total Common Ground Program properties to seven sites managed by nine growers/community organizations.

Recommendation: Authorize the City Manager to execute a license for the use of city property for agricultural use for: Kevin Prather and Jessi Asmussen of Mellowfields Urban Farm for the 1.0 acres in the NE corner of the Maple Grove Urban Farm Incubator site. (legal description on next page)

Legal Description of Maple Grove Urban Farm Incubator (NE corner plot – 1.0 acres)

Commencing at the Southwest corner of the South One-half (S ½) of the Southwest Quarter (SW ¼) of the Southeast Quarter (SE ¼) of Section 18, Township 12 South, Range 20 East of the Sixth Principal Meridian, in the City of Lawrence, Douglas County, Kansas; thence North 88°29'41" East on the South line of the Southeast Quarter (SE ¼) of said Section 18, a distance of 1031.59 feet; thence North 00°29'16" West a distance of 452.70 feet for the Point of Beginning; thence North 00°29'16" West, a distance of 181.51 feet; thence North 87°53'55" East, a distance of 239.69 feet; thence South 01°26'35" East, a distance of 181.51 feet; thence South 87°54'46" West, a distance of 242.72 feet to the Point of Beginning, containing 1.00 Acre more or less all in the city of Lawrence, Douglas County, Kansas; Subject to Rights-of-way, Easements and Restrictions of Record.