

Douglas County Historical Society

1047 Massachusetts Lawrence, KS 66044-2923

Phone 785-841-4109 Fax 787-841-9547

www.watkinsmuseum.org

May 7, 2013

Dave Corliss, City Manager
PO Box 708
Lawrence, KS 66044

Dear Dave,

Thank you for your commitment to the commemoration of the 150th anniversary of Quantrill's raid on Lawrence. Many great events have already been offered and we look forward to those that are yet to come. The Douglas County Historical Society is planning a number of commemorative events, the most significant being the public opening of a new permanent exhibit on the second floor of the Watkins Museum on August 17. This exhibit will explore Douglas County history, issues that shaped the development of the community, and events that made it a focus of national attention. The second floor will feature an exploration of Quantrill's raid and Lawrence's history during the Bleeding Kansas period. It will incorporate state-of-the-art exhibit design and interpretive approaches. Ultimately, the permanent exhibit will include installations on the third floor as well. Designs for the exhibit are enclosed.

The Douglas County Historical Society has been working for several years to redefine, focus and enhance the services and exhibits at Watkins Museum. Our goal is for the museum to become a more viable and active player in the cultural life of Lawrence and Douglas County. We've made tremendous progress towards this goal. Annual attendance has doubled over the past two years. The new exhibit is central to the Watkins Museum's revitalized visitor experience and educational approach.

Support for the exhibition has come from over forty private individuals and local businesses. Grants have been obtained from the Douglas County Heritage Preservation Council, Capitol Federal Foundation, Douglas County Community Foundation (DCCF) and the Simons Family Fund of the DCCF. Several local businesses have provided support through gifts-in-kind and discounted rates. Total cost for completion of the second floor installation is \$256,825. Planning for the fabrication and installation of the third floor will begin in 2014.

Phases 1 and 2, interpretive planning and exhibit development, have been completed. Phase 3, fabrication and installation of the second floor, is in process. An additional \$26,660 is needed for completion of this phase. When completed, the exhibit will provide a permanent and easily accessible experience that details Quantrill's raid and other important aspects of our community's heritage for residents and visitors..

We respectfully request that the City of Lawrence invest \$20,000 to help complete Phase 3 of this important project. Thank you for your support and consideration.

Sincerely,



John Pierce
President



Steve Nowak
Executive Director

Enc.

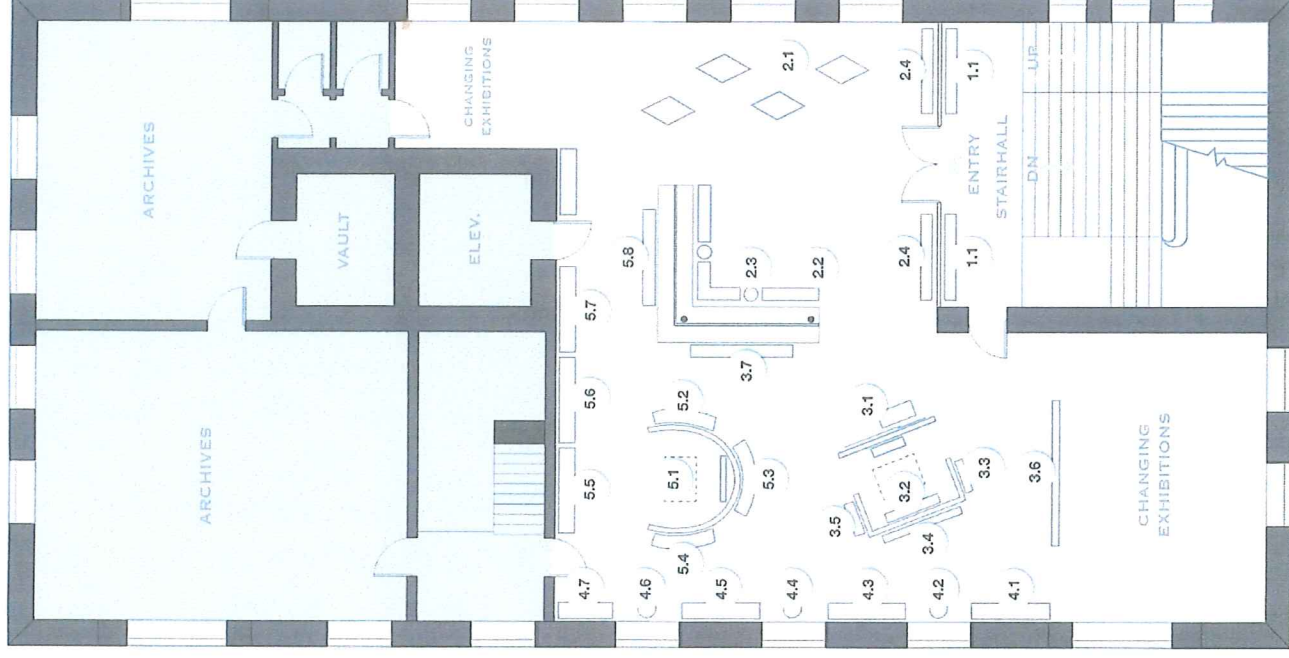
Introduction

- Meet the people who made Douglas County
- Chart the County's growth and development
- Explore the ideas and motivations that shaped the County



Second Floor

- Introduction
- The Free State Struggle in Douglas County
- 2 Changing Exhibition Galleries



SECOND FLOOR EXHIBIT PLAN

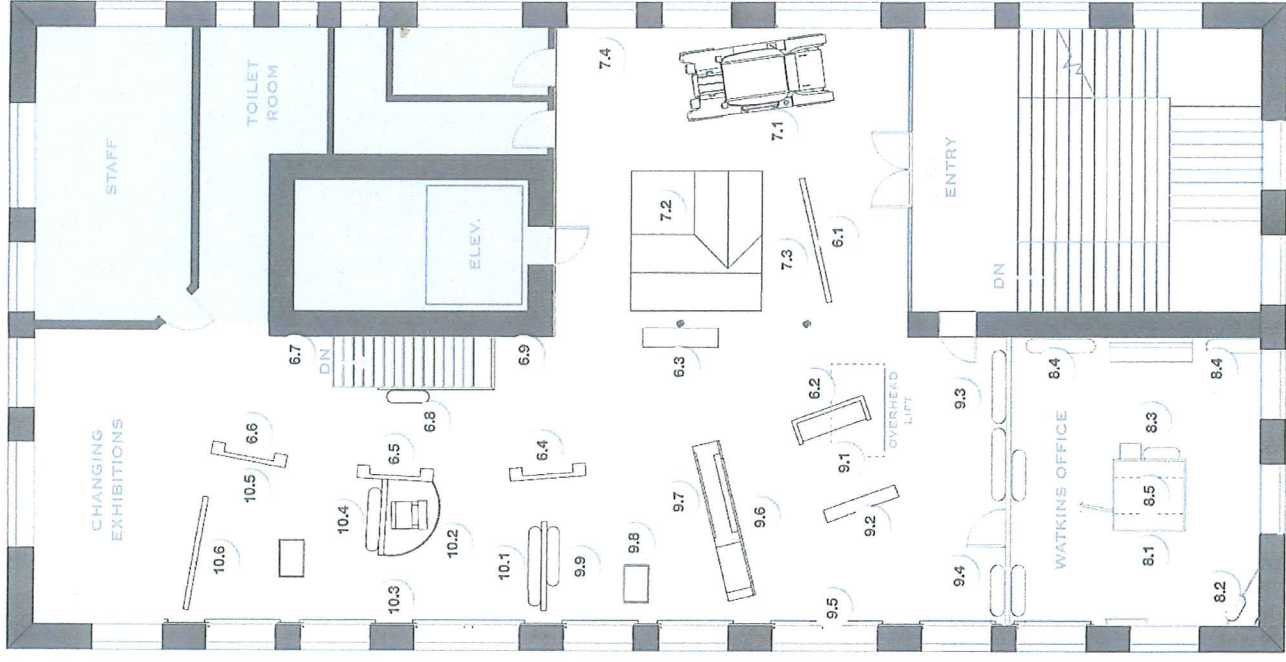
The Free State Struggle

- Quantrill's Raid Minute-by-Minute
- Achieving the Free State
- The Challenge of Realizing the Free State Idea



Third Floor

- Life in Douglas County
- Family Learning Center
- 1 Changing Exhibition Gallery
- 3 Highlight Areas



Life in Douglas County

- Innovation and Ingenuity
- Cultural Expression
- Everyday Needs
- Advancement through Education

