

Bobbie Walthall

To: David L. Corliss
Subject: RE: Urban agriculture proposal

From: Paul Grahovac [mailto:grahovac8@gmail.com]
Sent: Tuesday, November 01, 2011 10:04 AM
To: aroncromwell@gmail.com; schummfoods@gmail.com; mdever@sunflower.com; hughcarter@sunflower.com; mikeamyx515@hotmail.com; David L. Corliss
Cc: Jonathan Douglass; Megan Gilliland; Diane Stoddard; Cynthia Wagner; Eileen Horn; chadlawhorn@ljworld.com
Subject: Urban agriculture proposal

Mayor Aron E. Cromwell
Vice Mayor Bob Schumm
Commissioner Michael Dever
Commissioner Hugh Carter
Commissioner Mike Amyx
City Manager David Corliss

I read with interest the news about the possibility of Lawrence supporting urban agriculture (community gardens and or urban farming).

<http://wellcommons.com/groups/locavores/2011/oct/31/city-to-consider-allowing-small-scale-fa/>

I am General Counsel and Director of New Business Development for PROSOCO, Inc. in the East Hills Business Park.

Every Saturday for the last two years, I have volunteered for urban farmers on city-owned vacant lots in KCK, and I have brought other volunteers to serve through my volunteer organization. www.meetup.com/Grahovacs-Army-of-Volunteers-Gardening-with-Urban-Farmers

I cannot say enough good things about this, and I strongly encourage the City of Lawrence to support the proposal before it.

I have attached a four-slide PDF file ("Lawrence urban agriculture) summarizing Flint, Michigan's decision to approve such a program: "The 'Vacant Land Re - use Policy,' has been transformed into 'Land Available for Greening and Gardening.'"

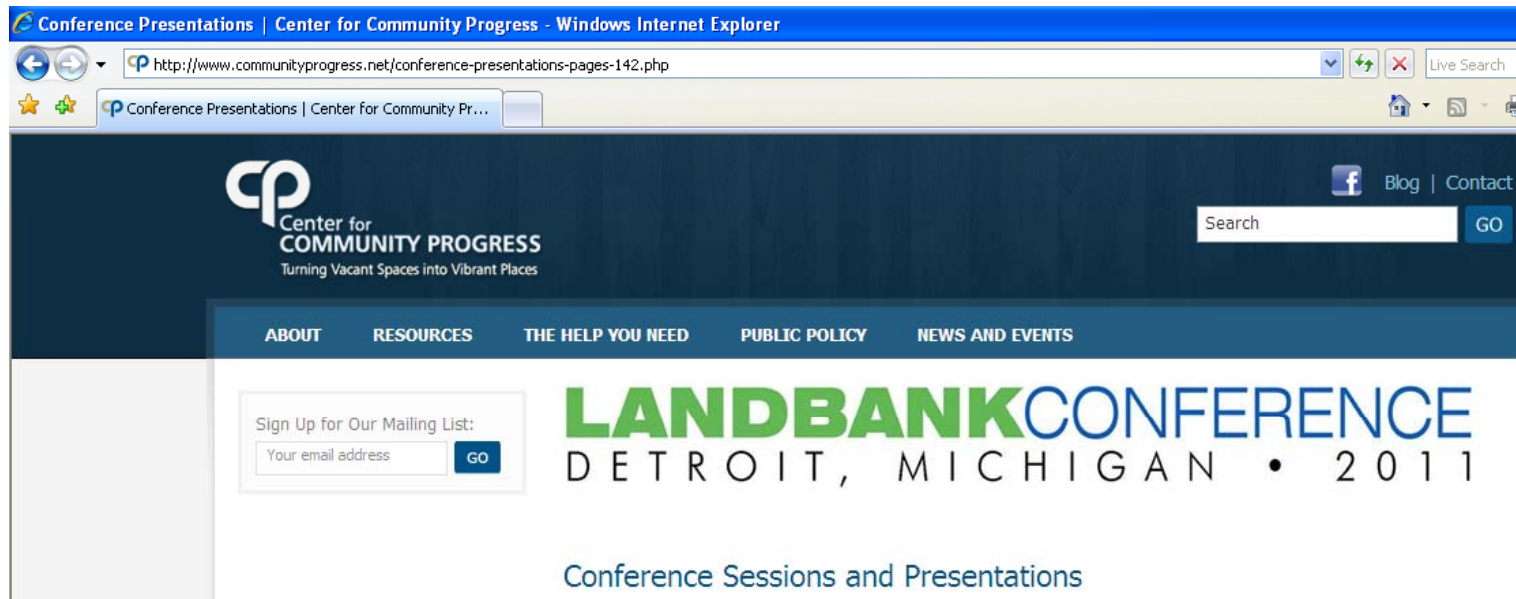
I have also attached a PDF file (KCCUA) with photos demonstrating that extensive production can be achieved on vacant lots using organic principles without the use of chemicals.

These photos and slides were prepared as part of the record-keeping required by the Kansas City Center for Urban Agriculture (KCCUA) now known as Cultivate KC.

You will note in the photos many KU shirts. These were taken on the day I helped bring 68 KUMC students to ten urban farms in KCK.

Sincerely,

Paul Grahovac
785-393-1816 cell



Solving the Vacant Lot Issue: Using Compost to Remediate Soil, **Grow Food, and Remove Blight**

Turn every food desert into a food oasis and every Brownfield into a Greenfield. Make impervious surfaces permeable, and turn blight to bright! **Partnerships between land banks, urban farmers, and urban gardeners offer solutions for trumping the vacancy and abandonment that exists in many post-industrial cities today.** Not only can urban agriculture extend budgetary relief to land banks, it also addresses the economic and social conditions that are the intention and impetus of land banking. This session will leave you with an entire toolkit of strategies to green vacant property, facilitate community partnerships and teach community members how to make gardening meet their nutritional needs. You will return to your communities with an increased knowledge and understanding of the purpose, goals, costs, benefits, obstacles, successes, and possibilities of urban gardening and farming.

*Speakers: Natalie Pruett, **Genesee County Land Bank***

Genessee County / Flint, Michigan **Land Bank** Goes All Out for Urban Agriculture

Programs - Windows Internet Explorer

http://thelandbank.org/programs.asp

Live Search

Programs

Renovating Property • Enhancing Neighborhoods • Strengthening Communities

GENESSEE COUNTY LANDBANK

Good Evening. Today is Monday, June 27, 2011. | Home | Contact Us | Search Properties | Log In

Search: Go

- Home
- About Us
- Contact Us
- Media Room
- Programs
 - Brownfield Redevelopment
 - Development
 - Planning
- Property Search
- Partner Organizations
- Links

Programs

- [2010 Flint Weed Abatement Schedule Click Here for Map by Service Area](#)
- [Adopt-a-Lot](#)
- [Clean & Green](#)
- [Demolition](#)
- [Housing Renovation / Rental](#)
- [Sales](#)
- [Side Lot Transfer](#)
- [Foreclosure Prevention](#)

Informative Downloads:

- [Programs PowerPoint Presentation](#)
- [Land Bank Brochure](#)

Adopt-a-Lot

When People or businesses in the community commit to caring for Land Bank owned vacant lots in their neighborhood, crime is reduced, property values increase, and the appearance of neighborhoods improve. Adopt-a-Lot has existed informally since the City of Flint started to experience the loss of housing. Neighbors began taking care of nearby properties, mowing the grass, picking up trash or better. Some planted flowers in nearby vacant lots to help beautify the neighborhood while others have started gardens or created impromptu pocket

Done

Internet 100%

The “Vacant Land Re-use Policy,” has been transformed into “Land Available for Greening and Gardening.”

http://www.thelandbank.org/downloads/LBA_Newsletter-Spring-2011.pdf - Windows Internet Explorer

http://www.thelandbank.org/downloads/LBA_Newsletter-Spring-2011.pdf

http://www.thelandbank.org/downloads/LBA_Newsle...



Land Available for Greening and Gardening

The Genesee County Land Bank has new policies and programs for vacant land re-use. For years, the Land Bank has been supporting greening and gardening of vacant land through the Adopt-A-Lot program. An Adopt-A-Lot Agreement gives groups or individuals permission to use and care for a vacant lot for one year. Groups and individuals have used these Agreements to do a variety of things with vacant land, from keeping the grass mowed to planting city-lot size vegetable gardens. There are currently 268 active Adopt-A-Lot Agreements. However, as dedication to caring for vacant land has grown over the years, the greening and gardening plans of many have outgrown Adopt-A-Lot.

Land Bank staff has responded to the increasing demand for longer-term access to vacant land. This past fall (2010) Land Bank staff wrote a new Vacant Land Re-use Policy that was unanimously approved by the Land Bank's Board of Directors in December. The goal of the policy is to accommodate the varying levels of dedication that groups and individuals have for caring for vacant land. Adopt-A-Lot still exists, but it is now one of several ways that groups and individuals can access vacant land held by the Genesee County Land Bank.

The “Vacant Land Re-use Policy”, written by Land Bank staff and approved by the Land Bank's Board of Directors, has been transformed into “Land Available for Greening and Gardening”, options for accessing vacant land.

- Adopt-A-Lot:
 - ◊ Is free
 - ◊ Is meant for care of land on a **year-to-year basis**
 - ◊ Is meant for projects that involve **little investment in the land itself**
 - ◊ Is most often used for short-term mowing and gardening
- Vacant Land Lease (2-5 year length):
 - ◊ Costs \$1 per year per lot
 - ◊ Is meant for care of land with a **2 – 5 year commitment**
 - ◊ Is most often used for longer-term greening and gardening projects
- Vacant Land Lease (2-5 year length) with Option to Purchase:
 - ◊ Costs \$1 per year per lot (while leasing)
 - ◊ Is meant for care of land with a **2 – 5 year commitment**
 - ◊ Is meant for projects that are **considering caring for the land permanently**
 - ◊ Is meant for projects that may involve **investing in the land itself**
 - ◊ Is most often used for long-term greening and gardening projects that are considering permanency and investing resources into the property



By Natalie Pruett

The National Land Bank Conference in Michigan was established by Flint – Genessee County officials who founded the Genessee Land Bank.

So, it's not surprising that the The Genessee County Land Bank's support for urban agriculture was featured at this year's Land Bank Conference.



Kansas City Center for Urban Agriculture Farm Business Development Program

Jefferson Farms
KCCUA Affiliate Farm
5th & Haskell
Kansas City, Kansas



Looking up the hill South toward the VFW from Haskell.

Beds are numbered in the order they were planted.



Location of Bed 6 and Community Bed relative to Beds 1 and 2.



Bed 1

4-18-10, planted Flash Collard seeded in greenhouse 2-11-10, 9 on West edge South end, 12 on East edge South end, 6" in from side 36" between rows 18" between plants. 17 Starbor Kale West edge North end seeded same day planted same way, 15 East edge North end.

Date ??? 44 onions planted in center of bed. Do not recall this, but it is in notes. Check bed to confirm.



Bed 2

4-24-10 planted Winter Broccoli seeded 2-19-10, 6" in from edge 18" apart, 19 West edge South end, 5-1-10 planted 31 East edge. 5-1-10 planted 28 Super Red Cabbage in middle of bed seeded 2-19-10.



Bed 3

5-1-10 planted 30 Winter Broccoli West edge and 91 Super Red Cabbage. See Bed 2 for seed dates and planting details.



Bed 4

5-1-10 planted 12 Sioux tomatoes South end, 18 Brandywine North end
West edge, 18 Green Zebras East edge.



Bed 5

5-1-10 planted 17 Rutgers South end both edges, 16 Roma North end West edge, 9 Paul Robison North end East edge, 58 (number seems high need to confirm) Kolrabi mid-bed seeded 2-19-10. 5-22-10 planted 27 Eggplants North end.

Looking up toward the VFW to the South from Haskell like the prior photos



Looking down toward Haskell with your back facing the VFW.



Bed 6

5-22-10 planted 23 Sweet Potatoes
West edge, 22 East edge, 22
Eggplants mid-bed South end.



Beet plantings

5-22-19 planted 35 beet plants along South edge of beds.



Bed 2
Planting 8-7-10

Provider Green Beans

Maxibel Green Beans



Water melon

West

Turnips

Tomatoes

Peppers

Collards

Brussel sprouts

Green cabbage

Peppers

Red cabbage

Green cabbage

Peppers

Tomatoes

Tomatoes

Okra

Okra

Tomatoes

North

Okra Beans

Beans

Beans

Collards

Collards

Collards

Okra

Sweet Potatoes

Leeks

Carrots

Slickleaf Mustard Greens

Collards

Cucumbers

Beets

Tomatoes

Sunflowers

Peppers

Zucchini

Grahovac's Army of Volunteers - Gardening with Urban Farmers

[Home](#)[About](#)[Meetups ▾](#)[Ideas](#)[Members](#)[Photos](#)[Discussions ▾](#)[More ▾](#)[Join us!](#)

Founded Jan 24, 2010
Olathe, KS

Volunteers **32**

Reviews **1**

Meetups **49**

Rating
☆☆☆☆☆

Featured Meetup
Sat Jan 8 @ 8:00 AM

Most Recent Idea

Grow for
distribution...

Organizer:
Paul Grahovac



Helping to Increase Incomes and Feed Families



For photos, click on Photos and also go to More / Files

Grahovac's Army of Volunteers

Helping Urban Farmers in Northeast Kansas City, Kansas

Paul Grahovac: Corporate attorney and business development executive.

Bio at: <http://paulgrahovac.blogspot.com/>

Paul's volunteer experience: 3 years of Saturdays with Habitat for Humanity in NE KCK.

The Work: Just one Hour. Gardening Saturdays 8am to noon. Come whatever time you can, leave when you want to. Just one hour of your work makes a huge difference. Call my cell if we have left Faith Lutheran for the gardens by the time you get there. 913-660-4697

GIVE.

Invest in your community.

ADVOCATE.

Champion the cause.

VOLUNTEER.

Give your time.

Welcome

About Us

Our Work

Campaign

Get Help

Media

Log-In

JOIN our Campaign to LIVE UNITED
SUPPORT Wyandotte County
GIVE a \$10 donation
Text "GIVEWYCO" to 864833 NOW



The United Way of Wyandotte County's
Mobile Giving Program is sponsored by

THE UNIVERSITY OF KANSAS HOSPITAL
Click Here to Donate Now

Welcome to United Way of Wyandotte County

Learn how your donations to
United Way of Wyandotte County
are working to improve lives

2010 Campaign Video

Live United Stories

Here in Wyandotte County, we live and work among people who truly care about this community and its people. We are surrounded and blessed by individuals who have examined their lifestyles to find ways to give of their money, time and resources. Kevin Salwen, keynote speaker for the UWWC's Community Rally and author of *The Power of Half*, has done just that. For his family, finding a way to give became a two year philanthropic odyssey. His teenage son, Joseph Salwen put it this way, "You're showing that you can redefine the American Dream to mean that sharing can lead to a better life for others. That's the American Dream for our family."

In the midst of the Salwen family's odyssey, we have a glimpse into the heart of our community. It's not just about us.

Community Building



**We need each
other now more
than ever**

Goal



Click For Contact
Information

KANSAS CITY KANSAN
The Voice of
Wyandotte
County Since
1921
NICK SLOAN
EXECUTIVE PUBLISHER
Phone: 913-884-1848
Email: nsloan@kansascitykansan.com
KCK Kansas Manager: 913-884-1848
www.kansascitykansan.com

User login

Username: *

Password: *

It's time to enlist as a volunteer

Posted by [Diane Hentges](#) on January 29, 2010 - 2:36pm

Tagged in [United Way of Wyandotte County](#)
[Volunteerism](#)

[Printer-friendly version](#)

[Send to friend](#)

There are numerous studies that show the positive



KU Med students help out KCK urban farmers

Posted by on August 2, 2010 - 9:35am

Tagged in

***University of Kansas Medical Center/
Volunteerism***







Strengthening Communities through Youth Service

[Home](#) [What is YVC?](#) [Affiliate Spotlight](#) [Start a YVC](#) [Get Involved](#) [Support YVC](#) [Resources](#) [Contact Us](#) [Affiliate Login](#)

Want to know more
about the YVC

Looking to get involved
locally or nationally

Donate Now

Want to know more about the YVC?



Since 1987 YVC has been engaging 11-18 year olds in structured, supervised service learning projects in and out of school. [Please read on to learn more about our program.](#)

Not in your community? [Start a YVC!](#)

[Next »](#)











Jefferson's Farm

Oak Grove Neighborhood Association, KCK

*Fresh Vegetables and Herbs
Grown using Organic gardening practices.*



913-371-2858 816-699-9743

ejefferson@kc.rr.com



08.20.2010 20:45