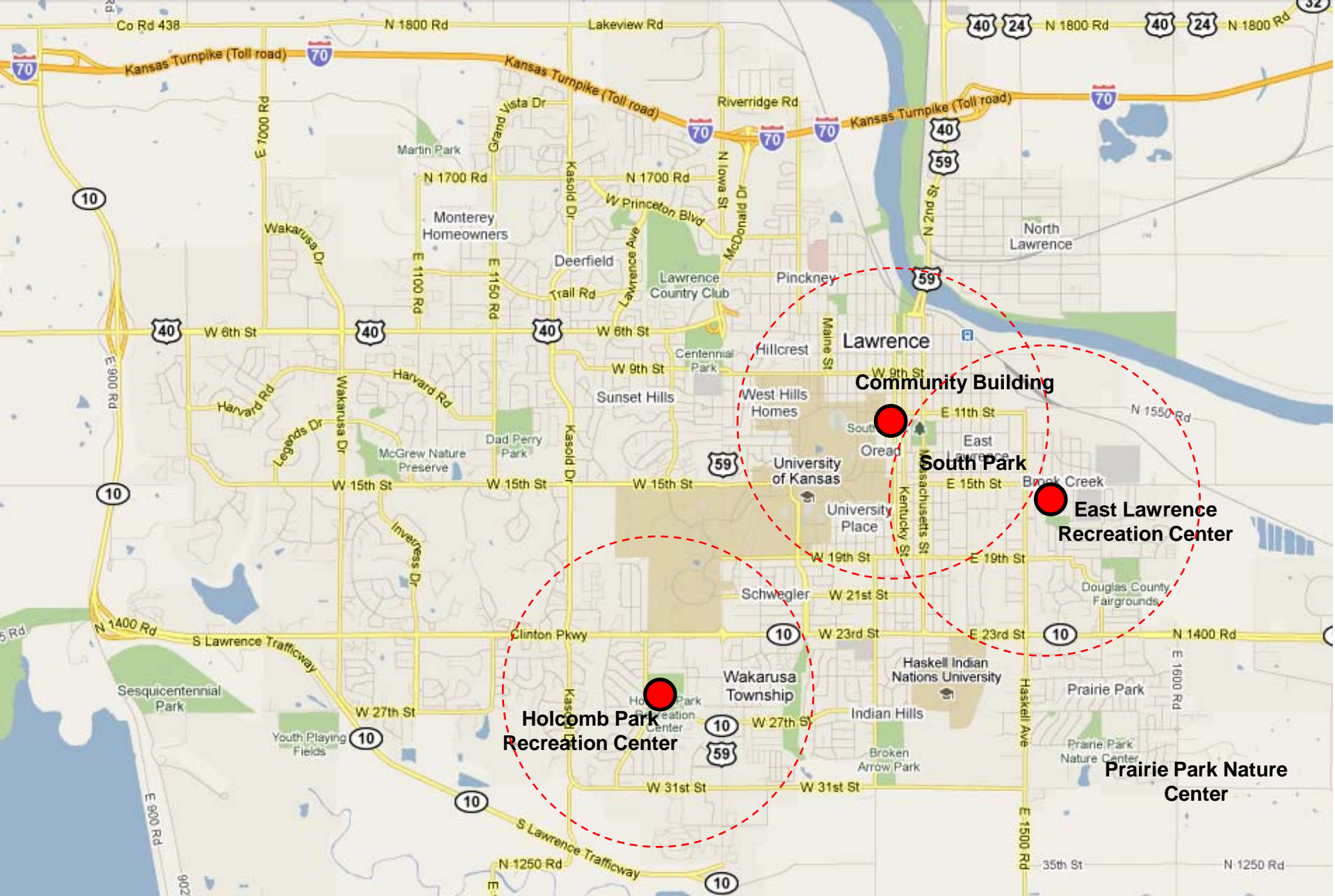


## Lawrence Activity and Wellness Center

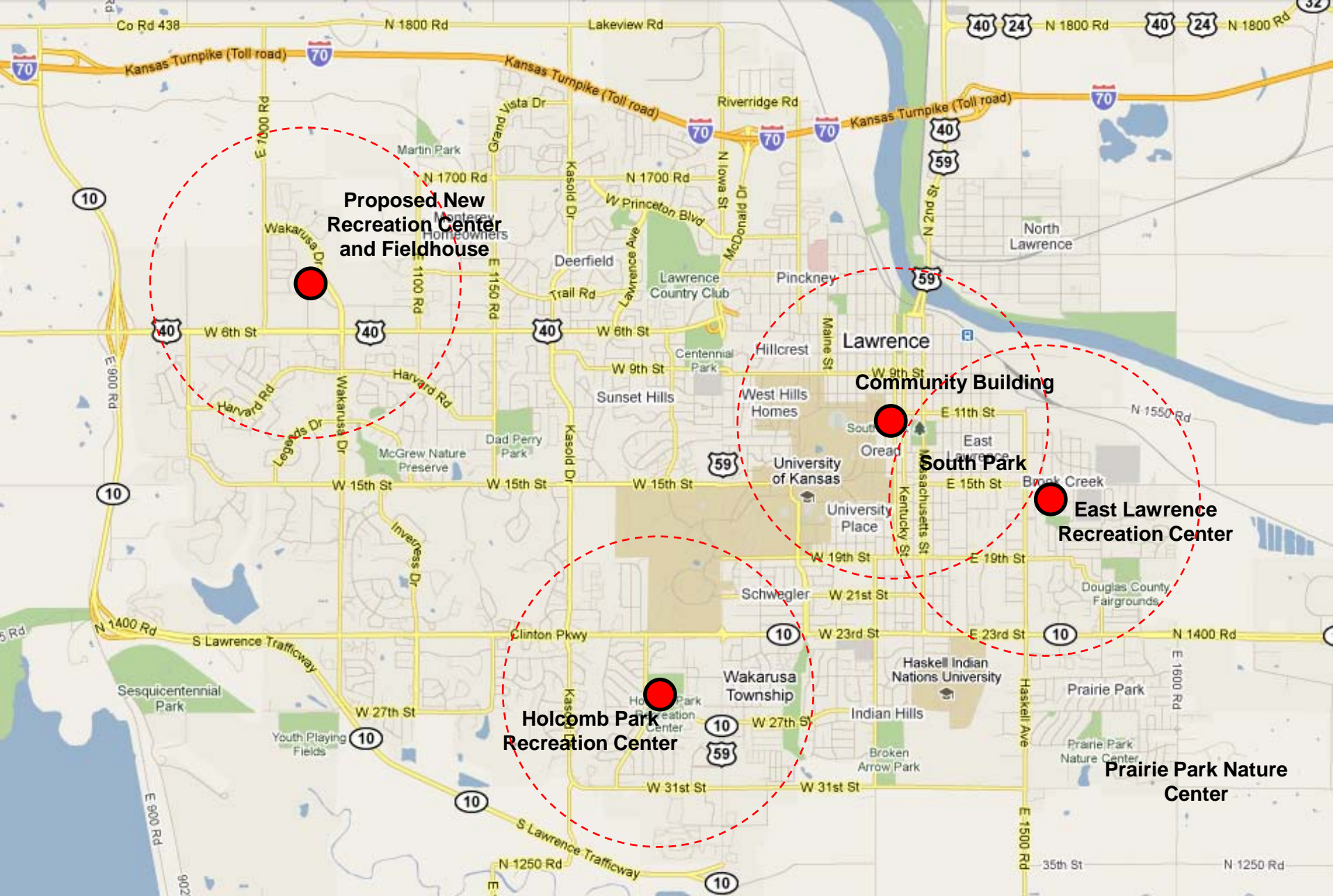


City of Lawrence

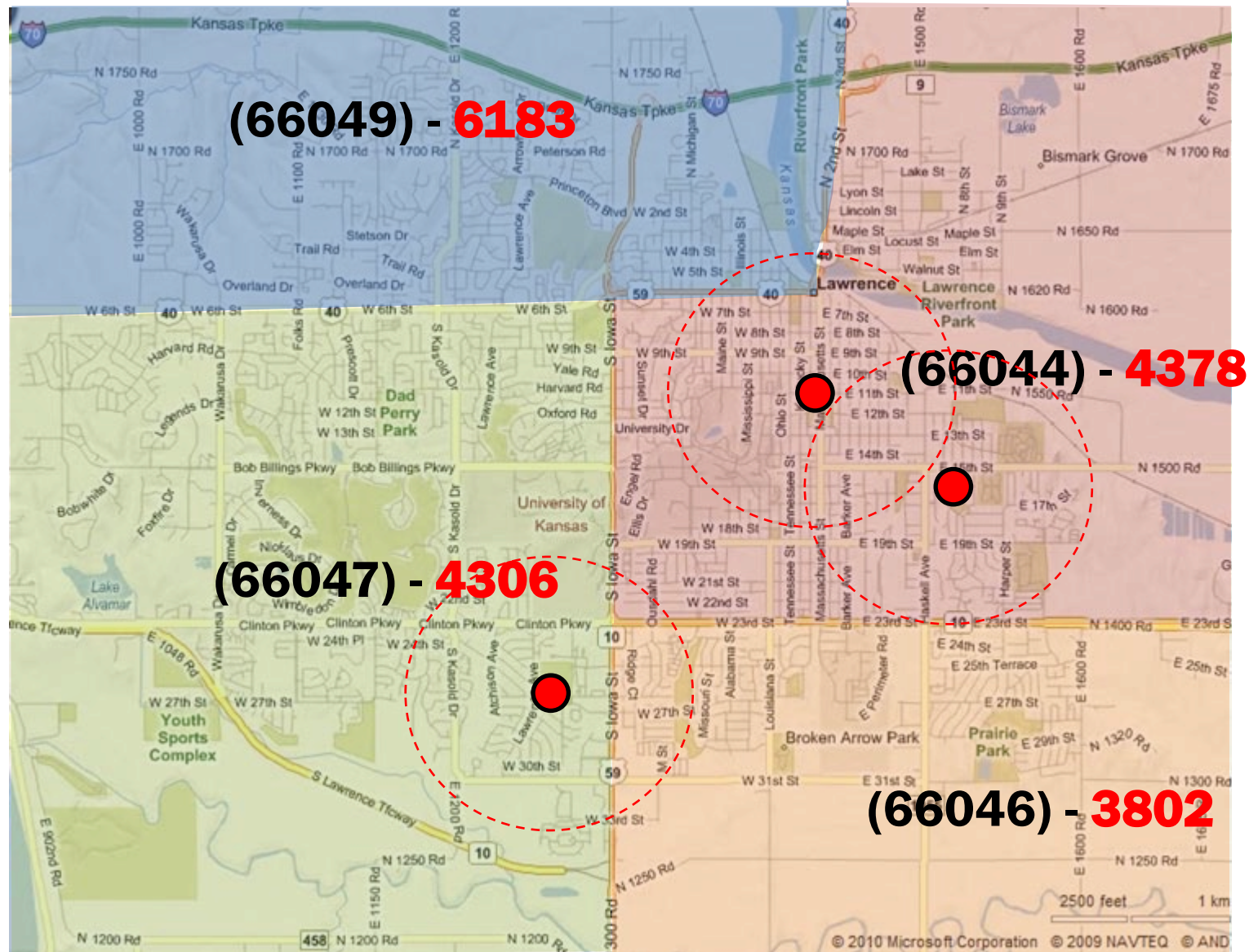


## Existing Community Recreation Facilities



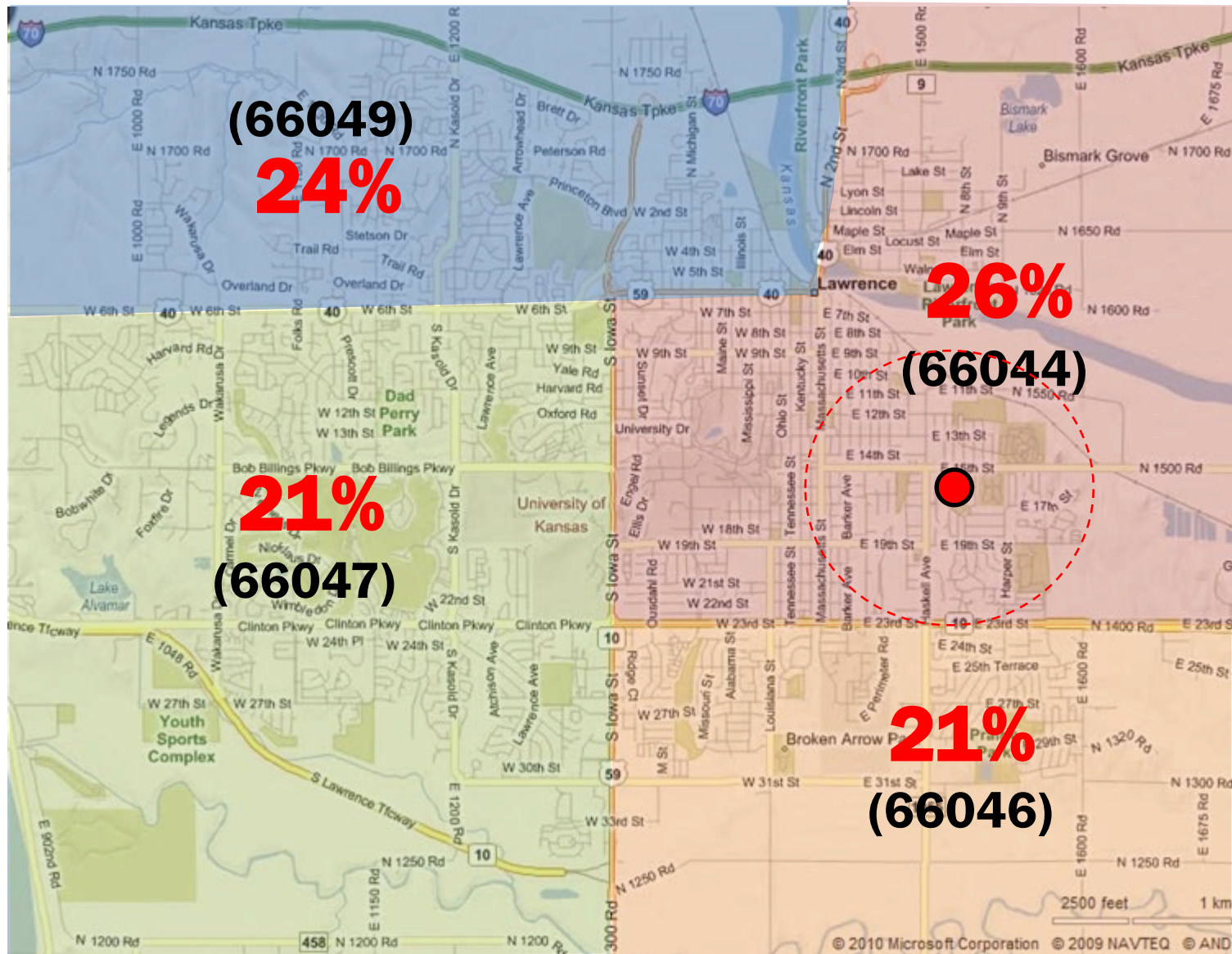


**Proposed Community Recreation Facilities**

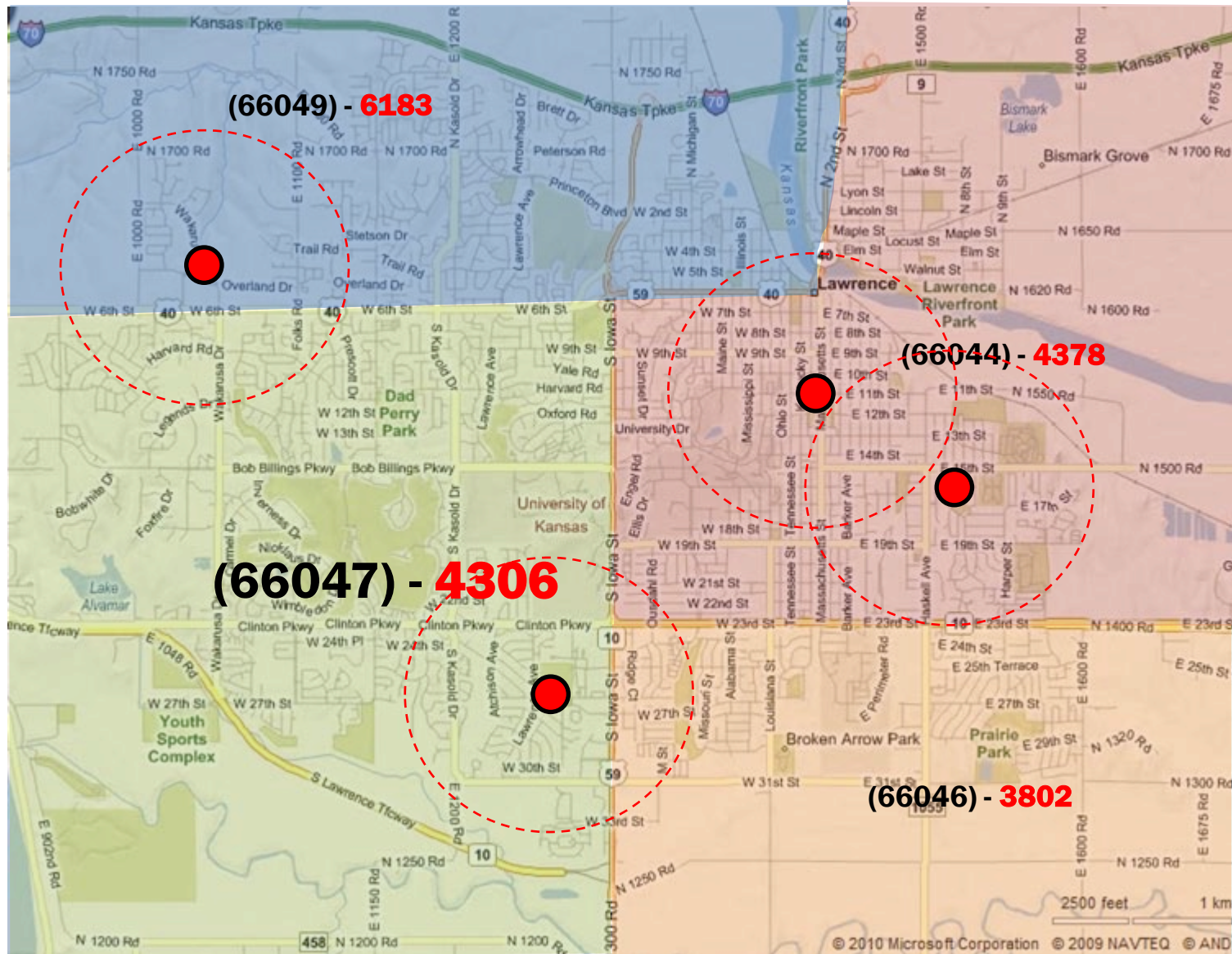


**Participants in Recreation Programs**





**East LW Center - participants in Programs**

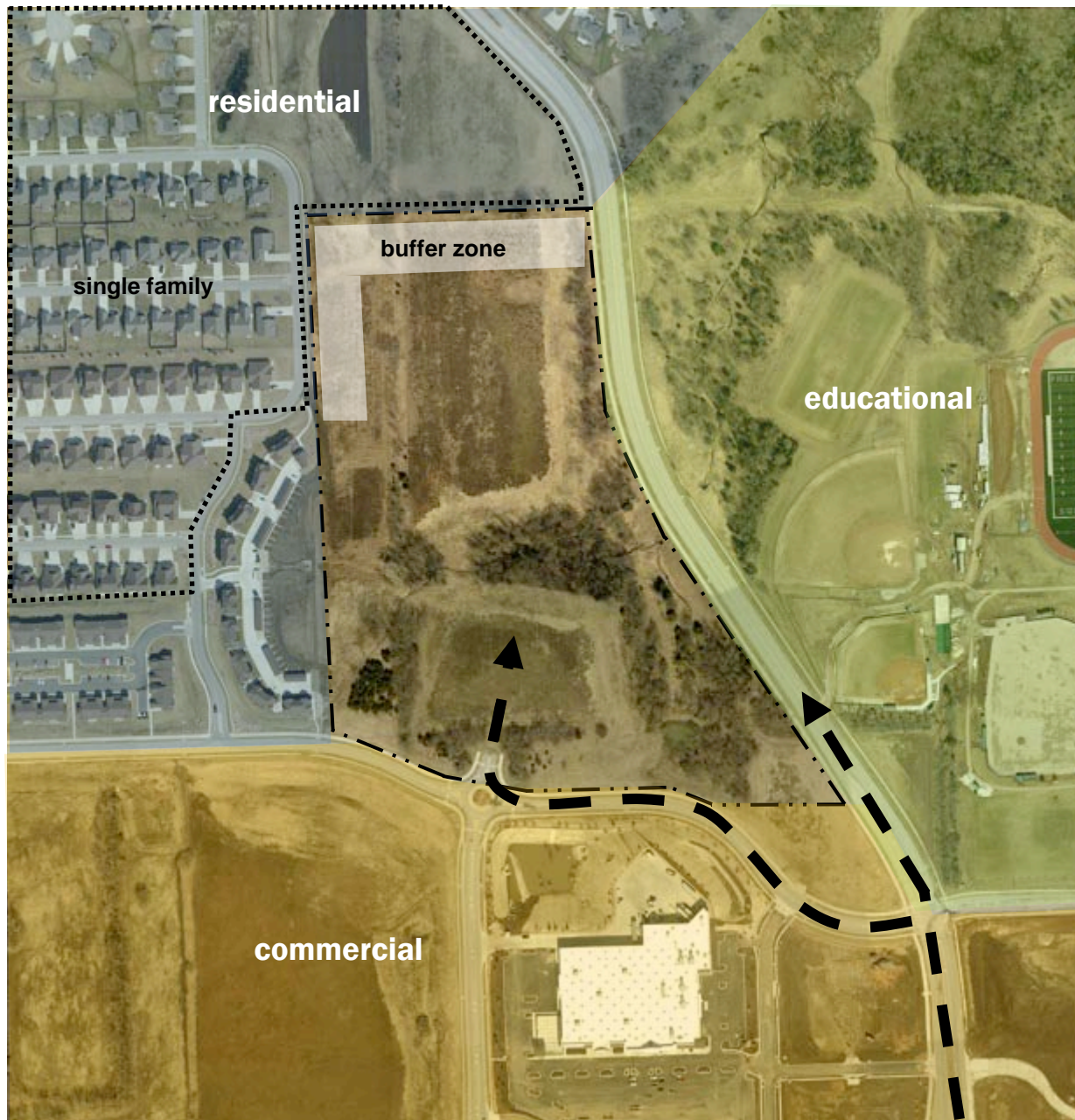


## Participants in Recreation Programs









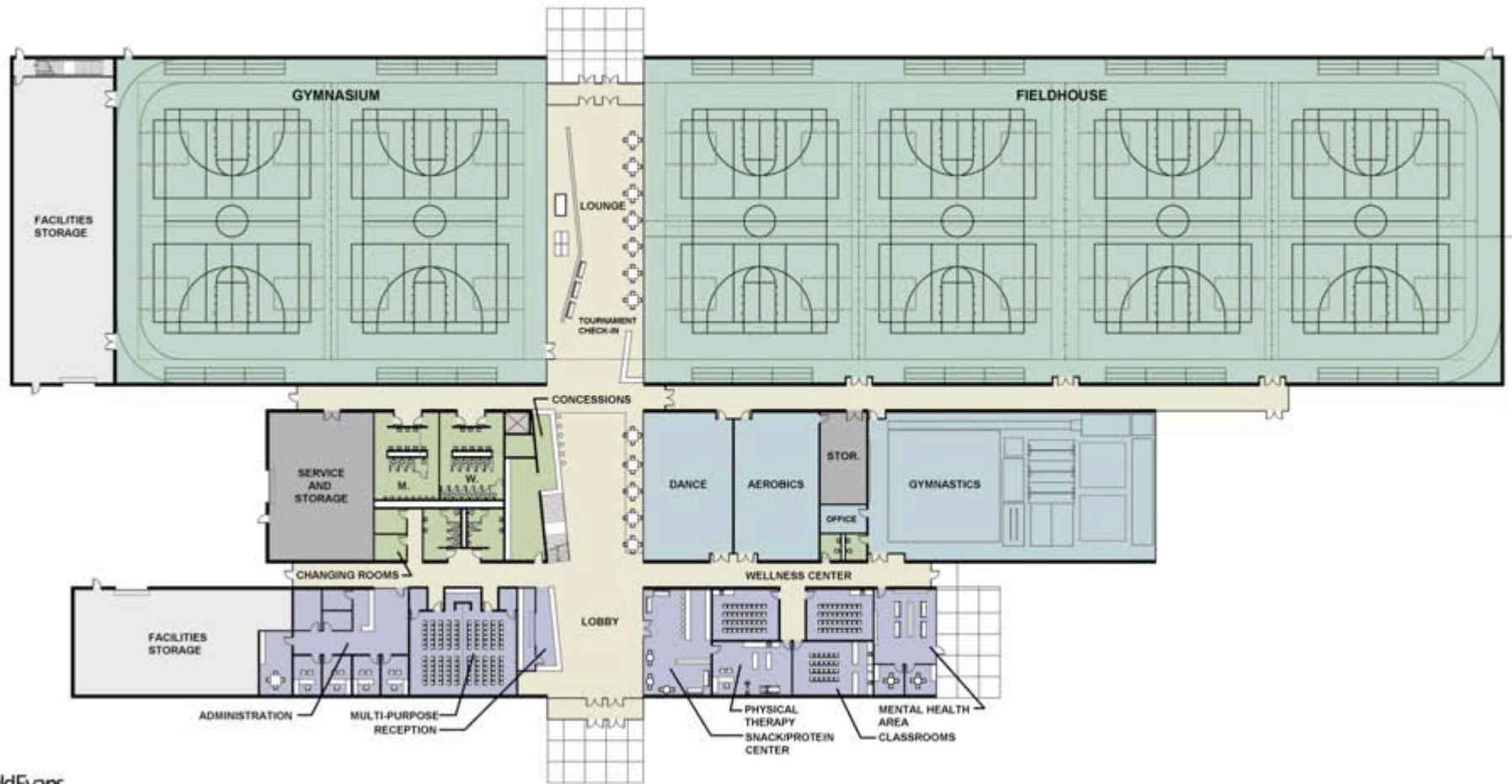
**Existing Infrastructure**



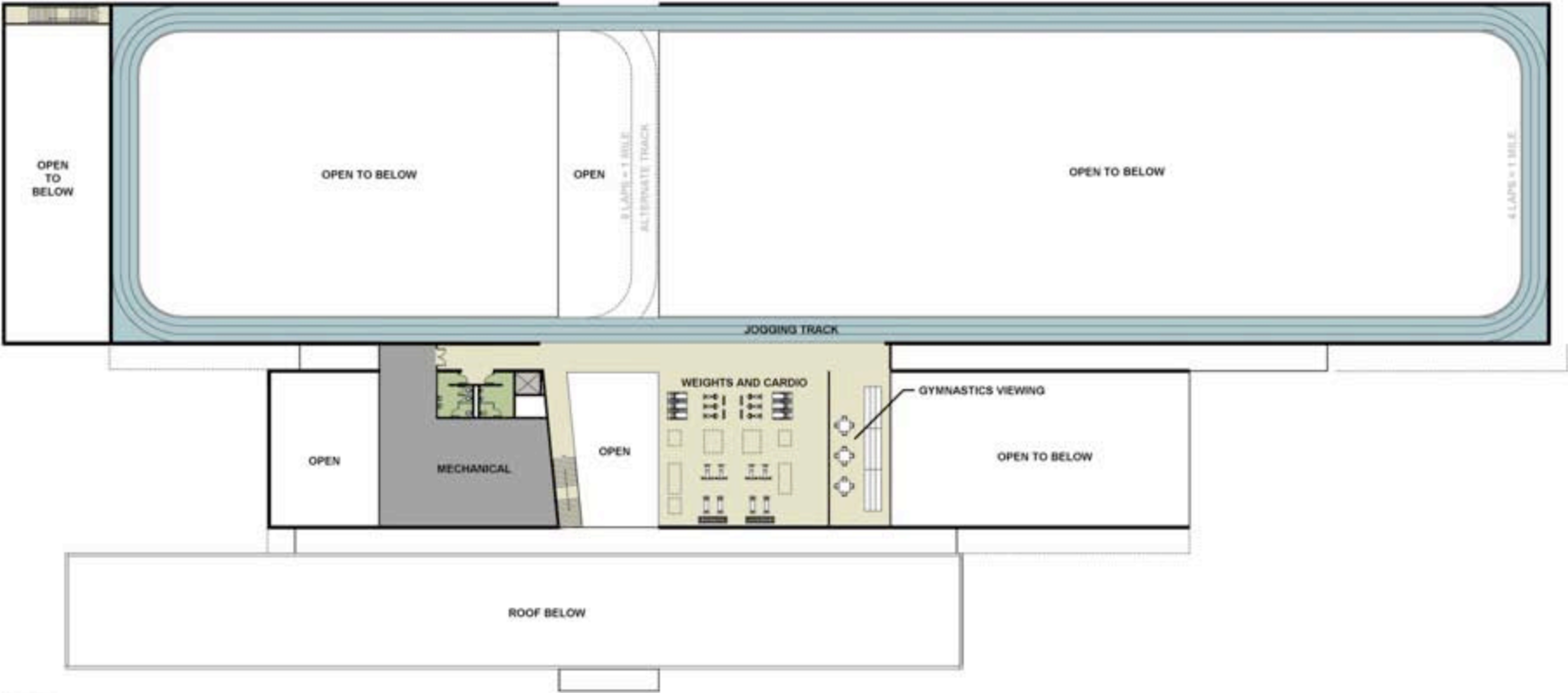
**19.5 – 22.5 million - 120,000 gsf**

No. of gyms – 6

No. of crosscourts – 12 (70')



19.5 – 22.5 million - 120,000 gsf

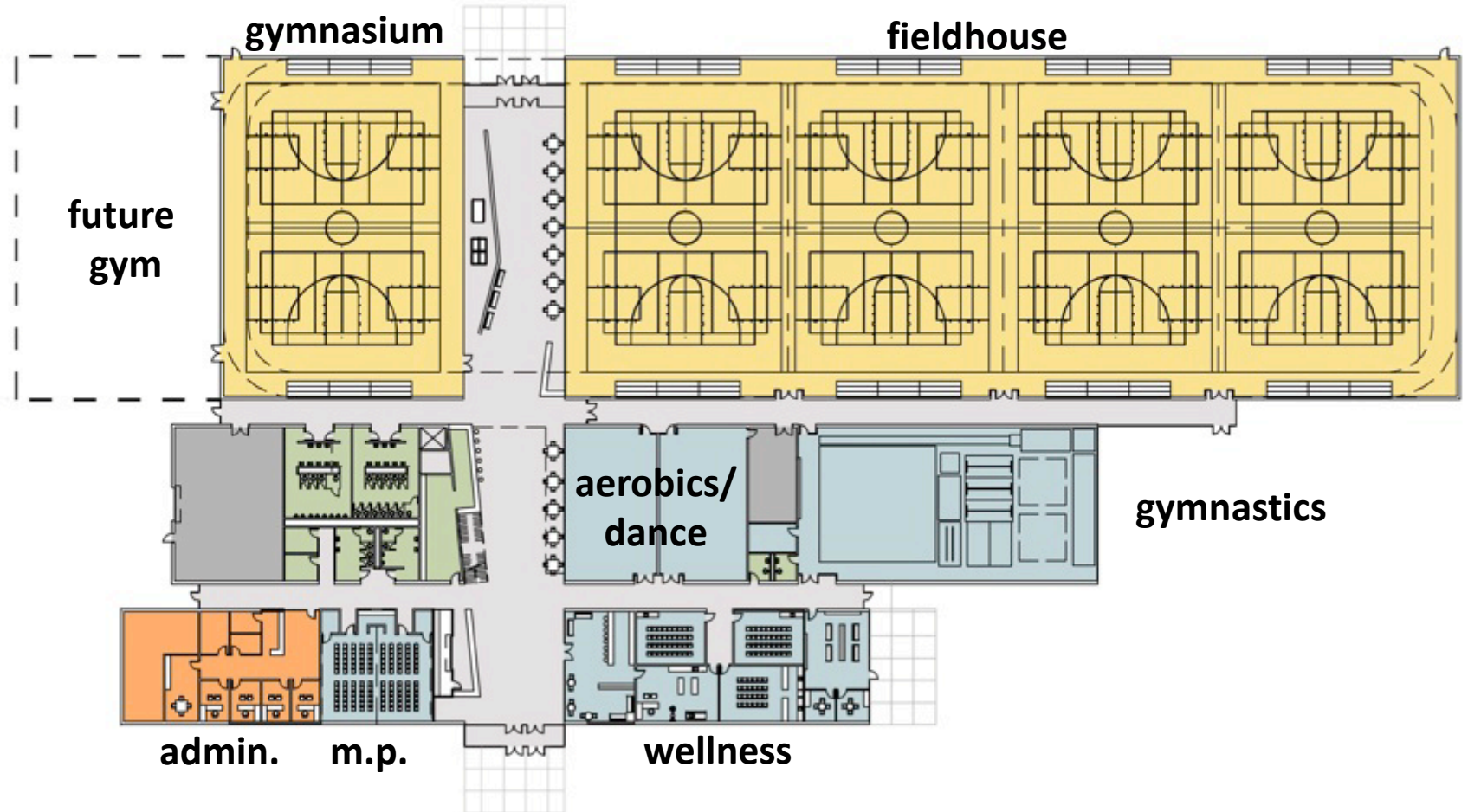




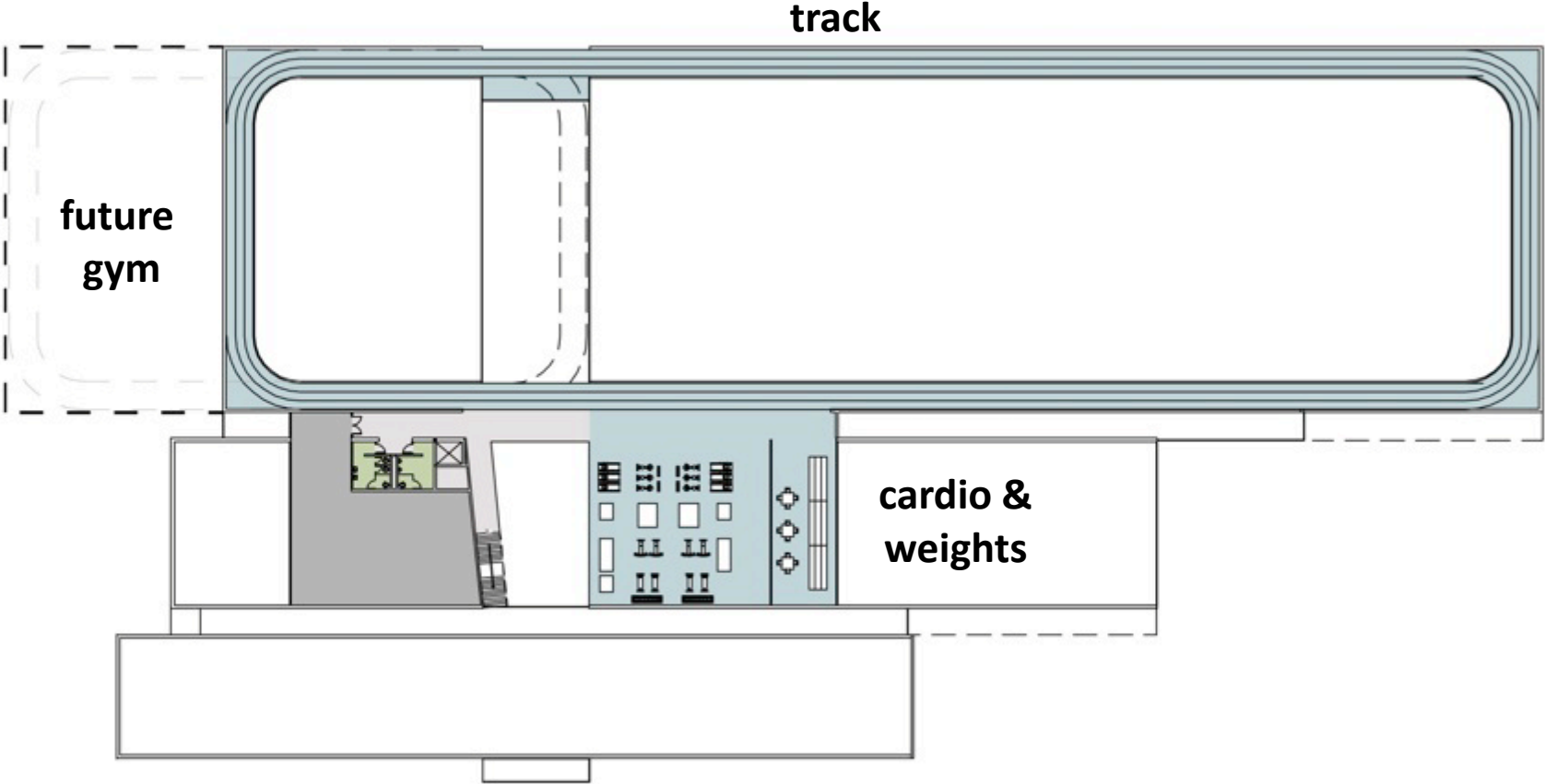
**17-20 million - 107,000 gsf**

No. of gyms – 5

No. of crosscourts – 10 (70')



17-20 million - 107,000 gsf

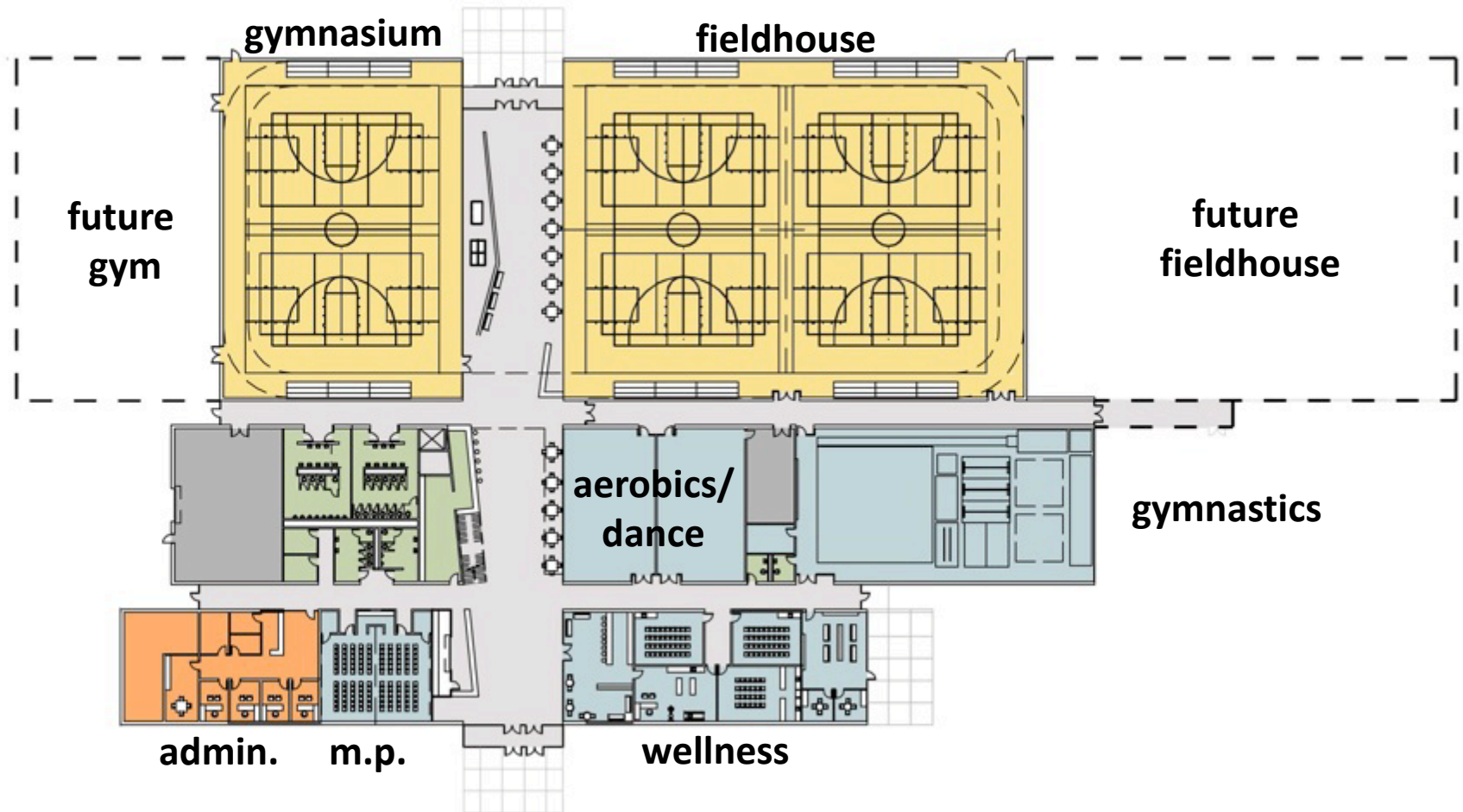




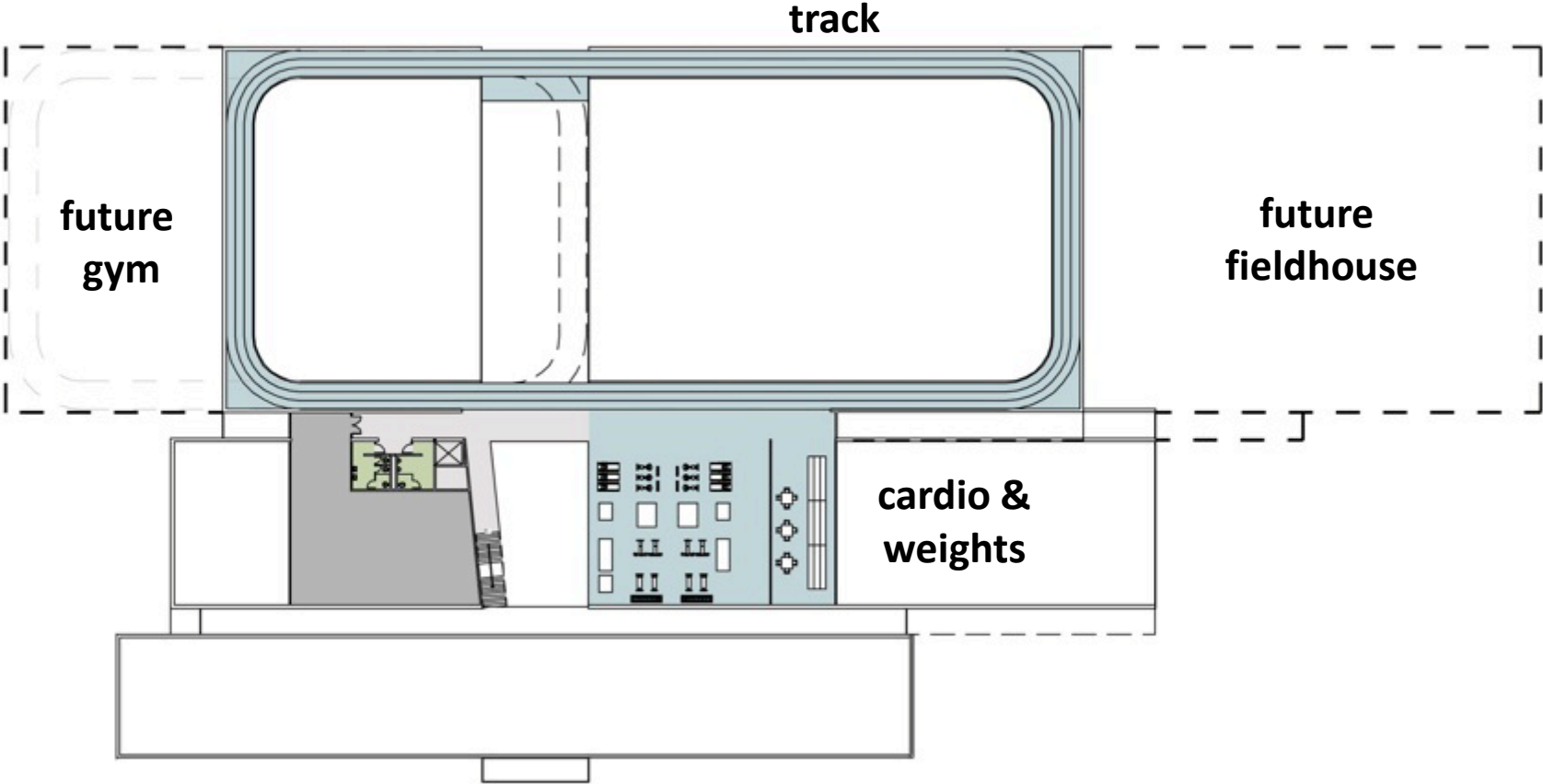
**13.5-15.5 million - 81,000 gsf**

No. of gyms – 3

No. of crosscourts – 6 (70')



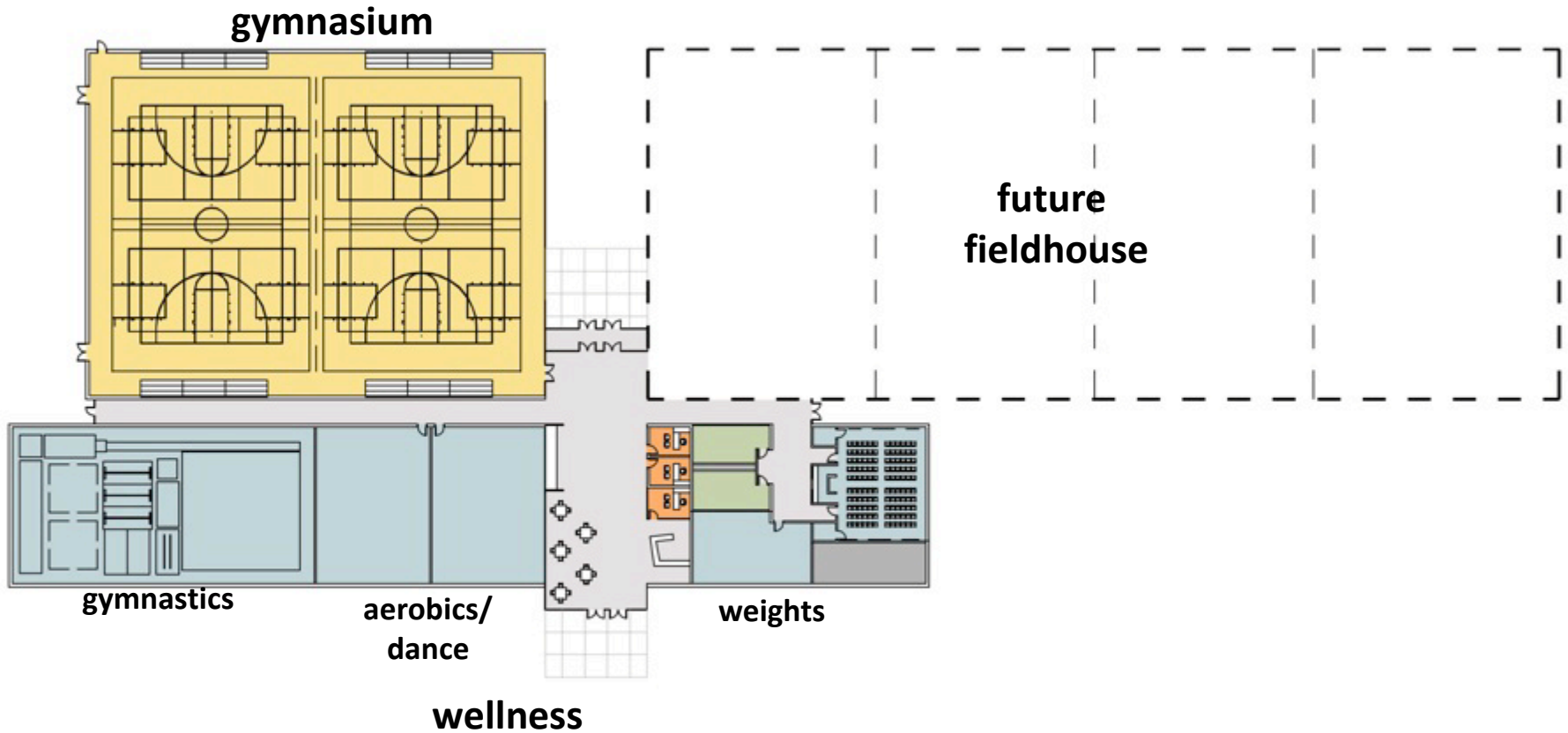
13.5-15.5 million - 81,000 gsf





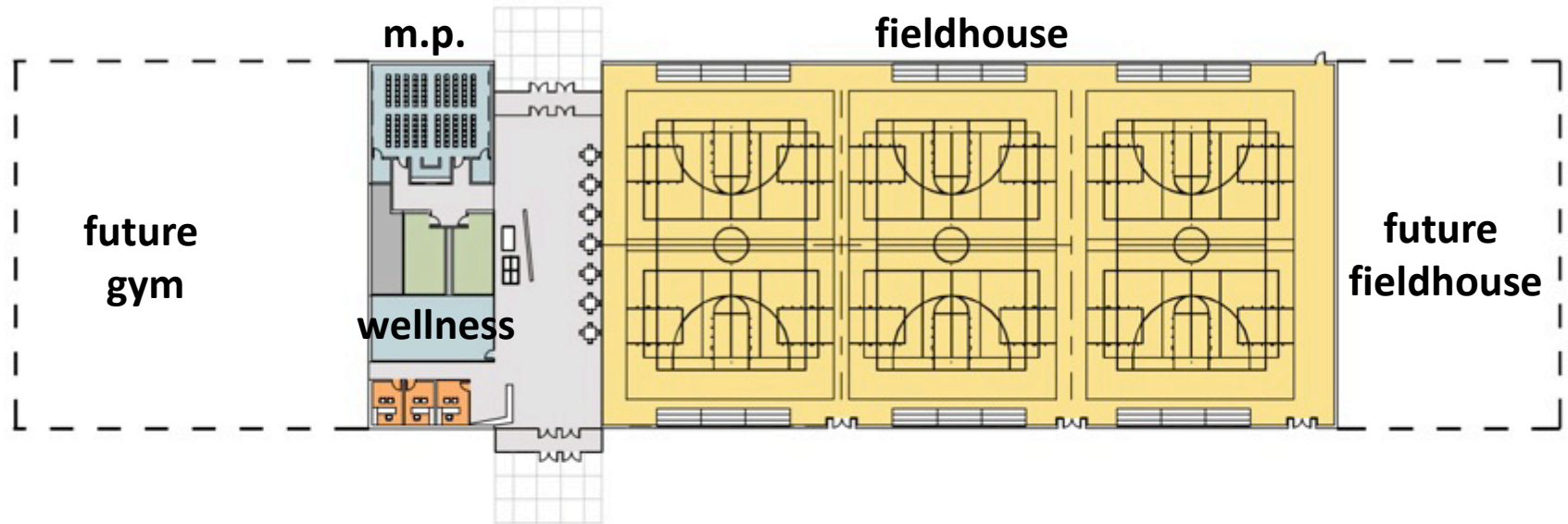
**8 million** (7 M – City of Lawrence; 1 M Assists)

41,000 gsf



**8 million** (7 M – City of Lawrence; 1 M Assists)

41,000 gsf

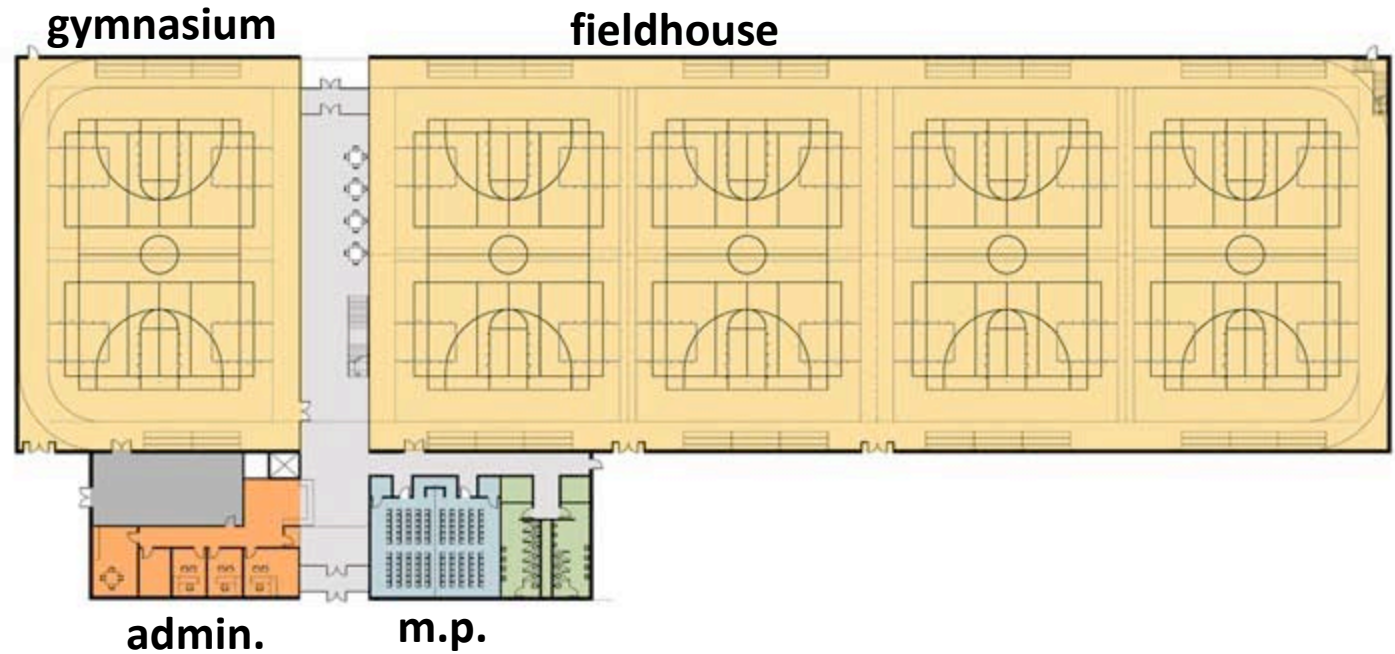




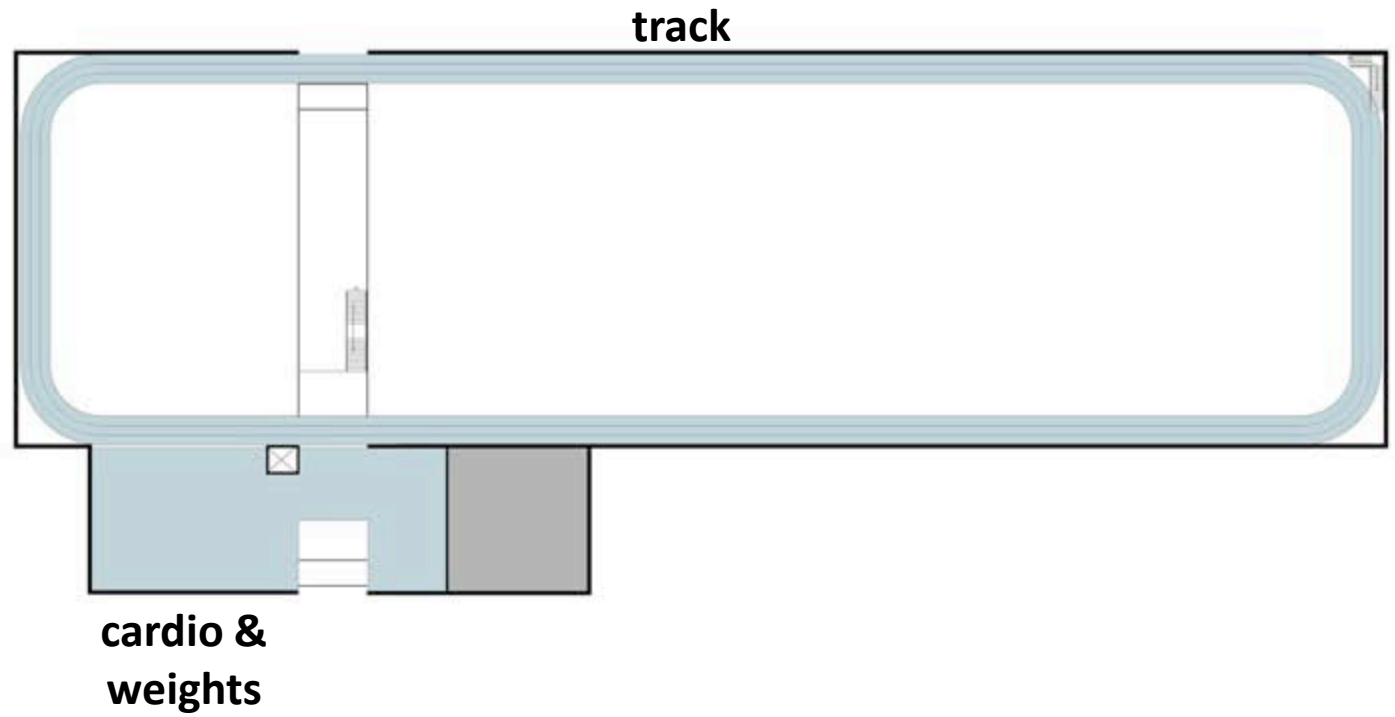
**13.0 - 15.0 million - 75,000 gsf**

No. of gyms – 5

No. of crosscourts – 10 (70')



**13.0-15.0 million - 75,000 gsf**

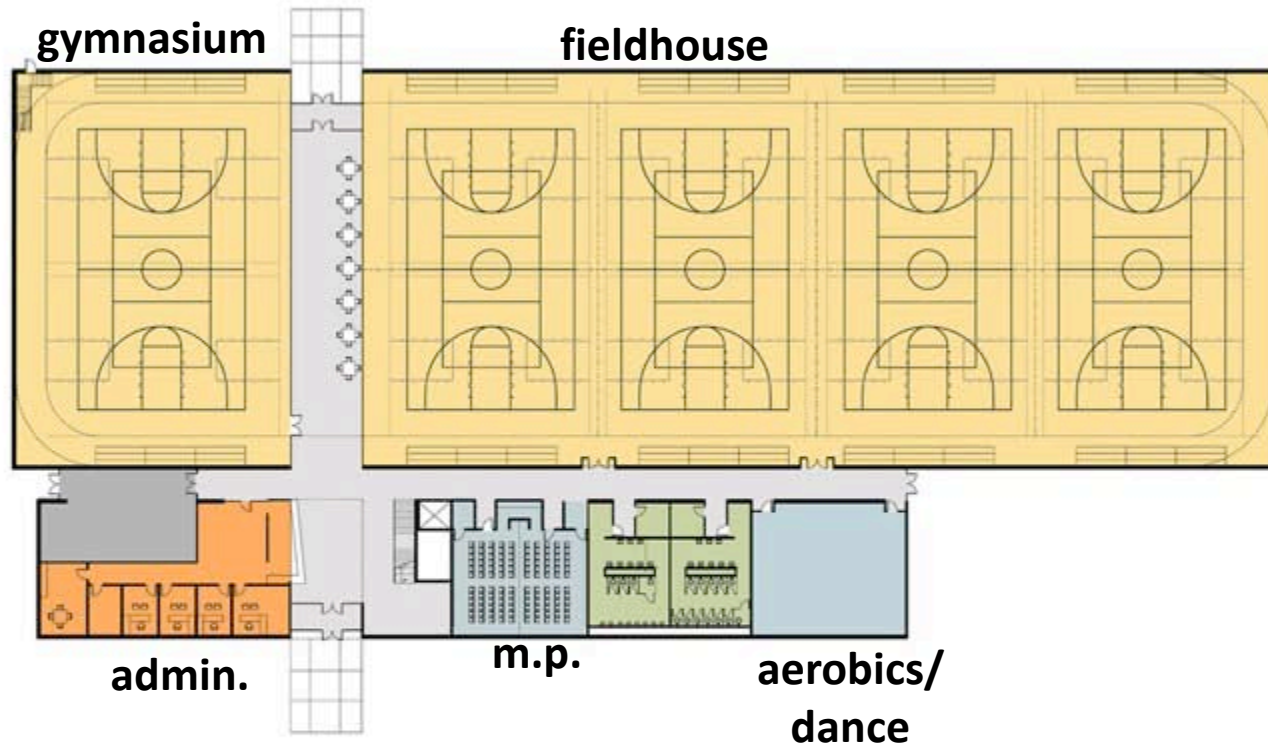




**13.5-15.5 million - 80,000 gsf**

No. of gyms – 5

No. of crosscourts – 10 (60')



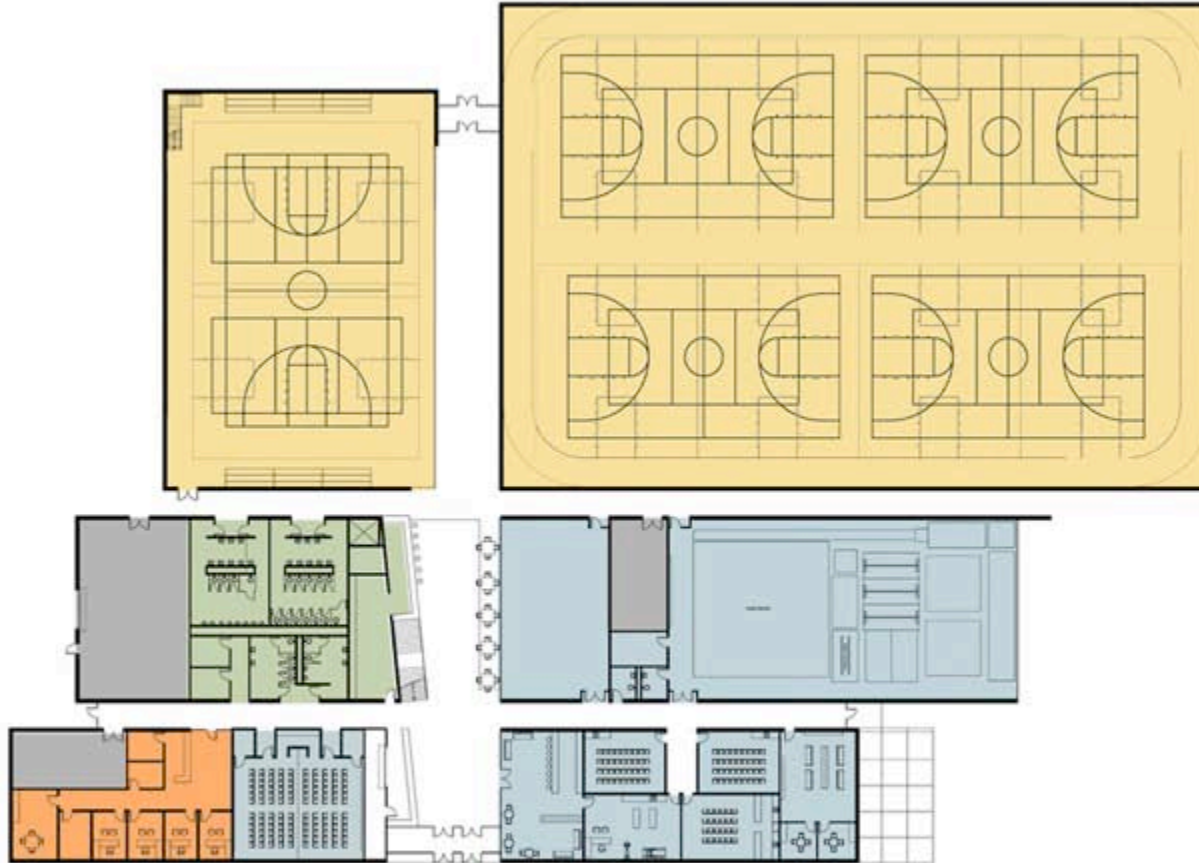
**13.5-15.5 million - 80,000 gsf**



**14-15 million - 85,000 gsf**

No. of gyms – 5

No. of crosscourts – 10 (60')







City of Lawrence