

City of Lawrence

Sustainability Advisory Board (SAB)

August 10, 2011 (5:30 PM) Meeting Minutes

MEMBERS PRESENT:	Sarah Hill-Nelson, Beth Johnson, Chad Luce, Dale Nimz, Megan Poindexter, Daniel Poull, Andrea Repinsky, Simran Sethi, Ian Spomer
YOUTH IN GOVERNMENT PRESENT:	Nick Benson
MEMBERS ABSENT:	Matt Lehrman
STAFF PRESENT:	Tammy Bennett, Eileen Horn, Kathy Richardson, Cynthia Wagner
GUESTS PRESENT:	Charles Marsh, Dean Palos, Michael Almon (all with the Peak Oil Task Force)
PUBLIC PRESENT:	Ralph Bauer

Call Meeting to Order (Megan Poindexter, Vice-Chair person)

Take Roll Call to Determine Quorum of Members

APPROVAL OF MEETING MINUTES

Motion and second to approve the July 13, 2011 minutes (Poull/Sethi).

Vote: Motion was passed unanimously.

Review Peak Oil Task Force Draft Report

Section included in Resolution No. 6795 establishing the Mayor's Task Force on Peak Oil:

Section 4: Coordination with Existing Boards, Commissioners and Task Forces. The Task Force shall coordinate with and seek input from the Sustainability Advisory Board, Mayor's Climate Protection Task Force and other City of Lawrence Boards and Commissions as appropriate. Any recommendations of the Task Force shall be submitted to the Sustainability Advisory Board for comment at least 30 days prior to presentation to the City Commission.

Charles Marsh, Dean Palos, and Michael Almon with the Peak Oil Task Force (POTF) attended the SAB meeting and received feedback and suggested language changes from the SAB on the POTF draft report. SAB also asked the task force members about their process.

Update on Progress of the Climate Protection Plan

A SAB subcommittee met last week to review the Climate Protection Plan Update presented by Eileen Horn at the July SAB meeting. The subcommittee created a PowerPoint presentation that captured the update information and Sarah Hill-Nelson walked through each slide requesting feedback and edits from other board members.

SAB discussed with staff the process of submitting this presentation. The board will approve the final draft of the presentation at their September board meeting and then send it up to the City Manager's Office. The City Manager will place the SAB presentation on a future City Commission meeting agenda.

Motion and second to table this conversation until the next meeting (Nimz/Hill-Nelson).

Vote: Motion was passed unanimously.

Daniel Poull mentioned that he would like the board to discuss the possibility of presenting an update of the Climate Protection Plan to the City Commission annually.

Waste Reduction & Recycling Report

Kathy Richardson emailed the WRR report (see attached). The Lawrence Energy Conservation Fair and Sustainable Homes Tour are scheduled for Saturday, September 10th. Staff will email the board additional information about the events and will also email a volunteer sign-up sheet.

Sustainability Coordinator Report

Eileen Horn informed SAB of the following:

- Take Charge Challenge: With 6 weeks left Lawrence has pulled ahead! To bring home the \$100,000 prize, Lawrence needs to focus on bulb switches and thermostats through Westar's WattSaver program.
- The Energy Saving Smackdown in the Fire/Med stations has resulted in over 21,000 kWh saved (\$1,000), for an average reduction of 8%.
- A new sustainability video has been created by our Communications Manager's summer intern staff. Eileen will send a link to SAB as soon as it is up.
- EnergyCAP is completely built/loaded. Eileen is conducting training with city staff to fully utilize, and confirming the GHG emissions #s with our previous calculations.
- The Efficiency Kansas program's defunding will not adversely impact the Challenge, but there is no more funding for financing of energy efficiency retrofits. However, the Kansas Energy Office is pursuing funding to keep the program, and Westar Energy is exploring an energy audit program.
- The City and County collaborated on an Access to Healthy Foods grant with the Douglas County Community Foundation. This planning grant will engage our local policymakers in a yearlong process of identifying policies that improve residents' access to healthy, local foods.
- Commissioner Bob Schumm and the Food Policy Council are working on a city land lease program to lease city-owned land to local growers for local food production.
- The Food Policy Council hosted the first Farmers Market at the Fair and Chefs Challenge. This was a huge success with 500+ attendees.
- WRR and the Johnson County Environmental Department are collaborating on a Midwest Litter Fest on Saturday, September 24th with Pick Up America. This is a litter collection event with teams traveling from Johnson County to Lawrence picking up trash along the 45 mile route.
- The County has achieved significant kWh and dollar savings through several projects. (Eileen delivered the attached presentation on 8/10 to the county commission.)

Miscellaneous Announcements and/or Public Comments

None.

Meeting adjourned 8:00 p.m.

Next meeting: September 14th, 2011 at 5:30.

Attachments:

- Waste Reduction and Recycling Division Report
- Sustainability Coordinator Presentation to County Commission



**Waste Reduction and Recycling Division Report for the Sustainability Advisory Board
(08/10/11)**

RECYCLING PROGRAM REPORT

OLD CORRUGATED CONTAINERS (OCC)

Cardboard	Tons	Revenue
Current YTD	780.26	\$116,346.05
Prior YTD	788.83	\$106,695.25
Avg. Price/ton thru July 2011: \$149.11		Avg. price/ton thru July 2010: \$135.26

OLD NEWSPAPERS (ONP)

Newspaper	Tons	Revenue
Current YTD	194.82	\$27,051.75
Prior YTD	256.88	\$25,152.95
Avg. Price/ton thru July 2011: \$138.86		Avg. Price/ton thru July 2010: \$97.92

OFFICE WASTE PAPER (SOP) AND SORTED WHITE LEDGER (SWL)

Sorted Office Paper	Tons	Revenue
Current YTD	14.80	\$4,054.52
Prior YTD	19.29	\$3,905.40
Avg. Price/ton thru July 2011: \$235.00(SOP)		Avg. Price/ton thru July 2010: \$202.46
		\$300.00(SWL)

MIXED WASTE PAPER (MIX)

Mixed Paper	Tons	Revenue
Current YTD	137.02	\$12,398.15
Prior YTD	164.83	\$10,722.38
Avg. Price/ton thru July 2011: \$90.48		Avg. Price/ton thru July 2010: \$65.05

<u>TOTAL</u>	<u>YTD</u>	<u>TONS</u>	<u>REVENUE</u>
		1,126.90	\$159,850.47
Prior YTD		1,232.18	\$146,475.98

HOUSEHOLD HAZARDOUS WASTE (HHW) AND SMALL QUANTITY GENERATOR (SQG) PROGRAM REPORT

Month	HHW Drop-Offs	Battery Bags in Mail	Appt No Show	Home-bound	Saturday Collection	Abandoned Waste	Orphan Waste	SQG Inventory	SQG Drop-off	Product Reuse Appt
January	94	14	4	0	0	1	0	5	5	7
February	62	3	6	0	0	3	0	11	10	6
March	203	6	15	0	0	2	0	12	11	28
April	232	0	12	0	19	2	0	14	14	70
May	272	0	18	0	11	4	0	9	8	65
June	363	1	22	0	31	4	0	9	8	84
July	360	1	23	0	16	2	0	9	8	71
August										
September										
October										
November										
December										
TOTAL	1586	25	100	0	77	18	0	69	64	331

YARD TRIMMINGS COLLECTION AND COMPOST PROGRAM REPORT

There were only 3 residential yard trimming collection days due to the Independence Day holiday.

<u>Yard Trimmings Collection: Year To Date</u>		Residential Tons Collected Curbside	Commercial Tons Received	Other Tons Received (Christmas Trees)	Total Tons This Month	Average Preferred Container Compliance
2011	January	NA	57.2	21.65	78.85	NA
	February	NA	57.1	NA	57.1	NA
	March	337.65	282.1	NA	619.75	99.4%
	April	646.38	370.3	NA	1,016.68	99.3%
	May	448.44	312.5	NA	760.94	99.7%
	June	376.20	332.3	NA	708.5	99.7%
	July	167.72	360.3	NA	528.02	99.9%
	August					
	September					
	October					
	November					
	December					
	2011 TOTAL	1,976.39	1,771.8	21.65	3,769.84	99.6%

Lawrence Energy Conservation Fair Sponsor/Exhibitor List

\$750 Sponsor

Black Hills Energy
Knology (in-kind)
Scott Temperature
Sunflower Horizons (in-kind)

\$500 Sponsor

Billy Pilgrim LLC (in-kind)
Cromwell Solar
Hughes Consulting Engineering (not exhibiting)
Sunlite Science & Technology Inc.
Take Charge Challenge
Westar Energy

EXHIBITORS

Builder/Architect: Clem Design
J. Stephen Lane Architect

Education: Cans for the Community
Douglas County Extension Master Gardeners
Heartland Renewable Energy Society
Lawrence Preservation Alliance
Lawrence Waste Reduction & Recycling Division
Pinnacle Career Institute
Sunflower Horizons.com
Take Charge Challenge
Tenants to Homeowners, Inc.

Energy Efficiency Products: 106 Greenway
Ground Source Inc.
J & B Foam, Inc.
Scott Temperature
Sunlite Science & Technology Inc.

Solar Electric/Solar Thermal: Cromwell Solar
Diamond Solar Solutions
Wentz Alternative Energy Co.

Transportation: Lawrence Transit System
LilyPad EV
Mid America Electric Auto Assoc.

Utilities: Black Hills Energy
Leavenworth Jefferson Electric Cooperative
Westar Energy

Other: Larsen & Associates (geo-thermal)
Knology (television)

Update: Energy Efficiency Projects & Upcoming Sustainability Initiatives

Provided by:

Eileen Horn, Sustainability Coordinator

Bill Bell, Maintenance Director

Douglas County Sustainability Team

Energy Efficiency Projects

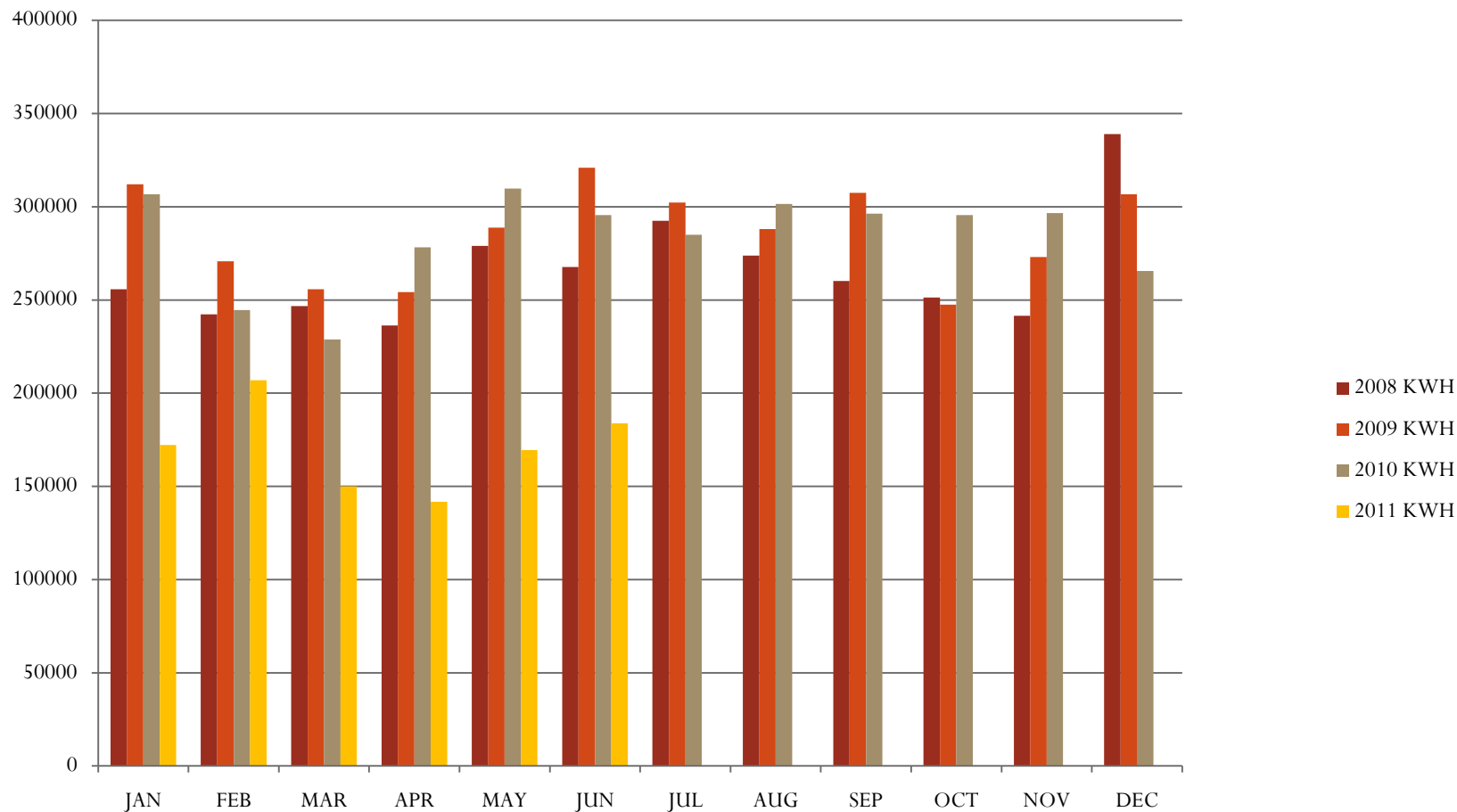
June 2010-July 2011

1. Efficiency retrofits to Judicial Law Enforcement Center
2. Replacement of Courthouse boiler
3. KSU Extension Office:
 - Energy audit and energy efficiency improvements
 - Solar photovoltaic panels
4. Solar thermal panels at Jail and Youth Services
5. FREE energy audit of United Way building
6. Participation of Lawrence and Baldwin City in Take Charge Challenge
7. Hybrid administration cars

1. Judicial Law Enforcement Center

- Project: VAV box retrofits, AHU upgrades, improved controls and operations
- Cost: \$178,285
- Projected annual savings: \$23,890
- Projected payback: 7.4 years
- **Savings January-July: \$35,154**
- **Revised annual projection:**
 - **Reduction of 1.3 million kWh (39%)**
 - **935 metric tons CO₂**
 - 183 passenger vehicles taken off road each year
 - 2,174 barrels of oil
- **Revised payback: = 3.2 years**

JLE Electricity Usage (kWh):



2. Boiler Replacement – Courthouse Building

Projected savings:

- Old boiler: 80% fuel efficiency rating (at installation in 1976)
- New Aerco boiler: 99% fuel efficiency rating
- Annual natural gas costs for Courthouse = **\$14,456** (3 year avg.)
- Cost of equipment/install = **\$50,000**
- Projected annual savings = **\$5,783**

Actual Savings:

➤ Actual utility bill

savings (Nov2010-April 2011)

↓ 46%

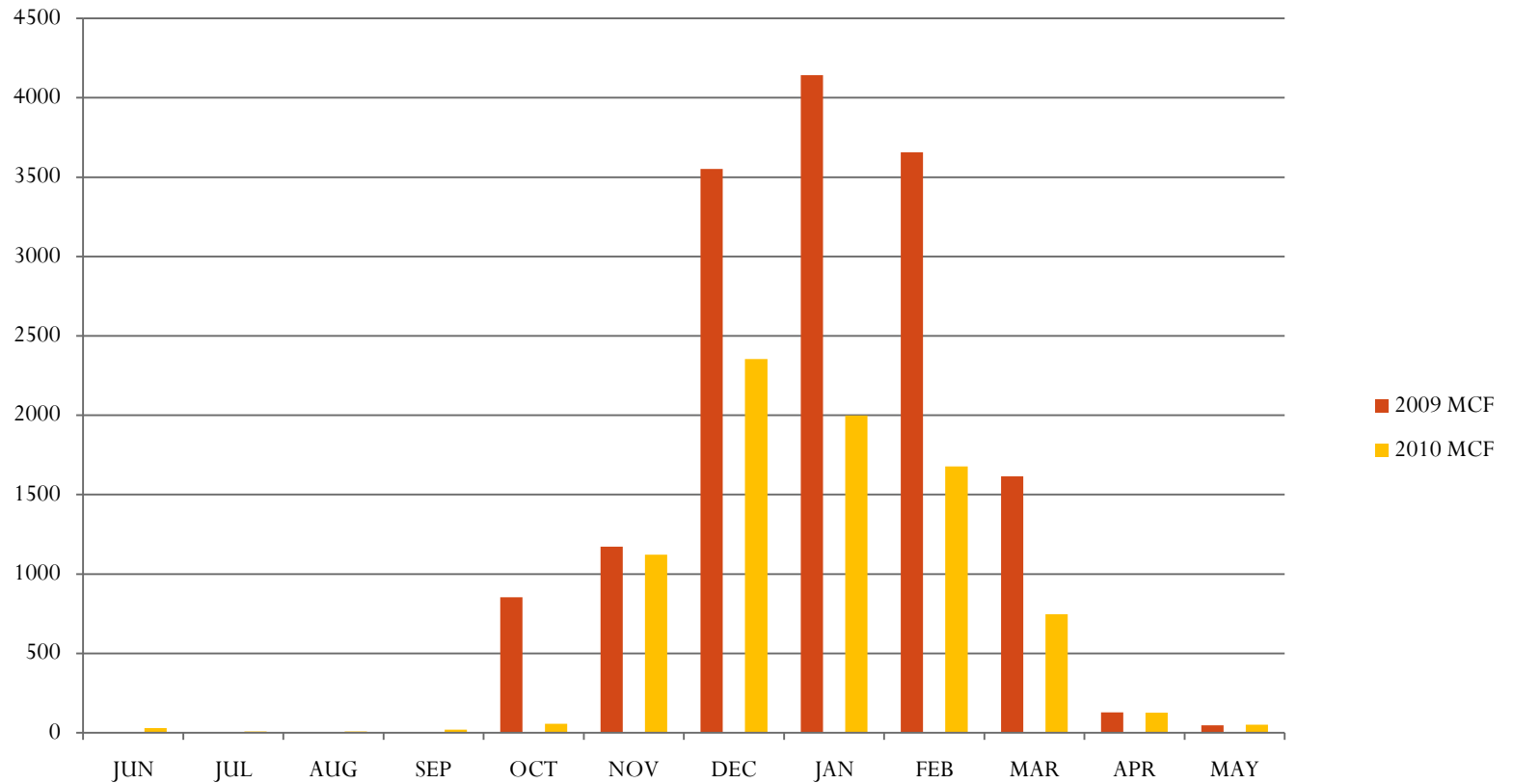
➤ YTD 2011 gas costs:

\$5,807

➤ 2012 requested

budget = **\$8,709**

Courthouse Natural Gas (therms):



3. Projects at Douglas County Extension Office

- **Energy Efficiency:**
 - Conducted an energy audit- which included a pre and post test;
 - Installed programmable thermostats;
 - Replacing all regular incandescent light bulbs with CFLs;
 - Exchanging T-12 florescent ballasts with T-8 ballasts;
 - Placed aerators in all water faucets;
 - Added weather stripping to exterior doors;
 - Sealed cracks and holes between the ceiling and attic;
 - Sealed air return ducts in the attic;
 - Added cellulose insulation in the attic which increased the insulation value from an R-13 to an R-43 level;
- **Renewable energy:**
 - Installed a 4.2 kW solar photovoltaic (pv)system on the roof.

Energy Efficiency:

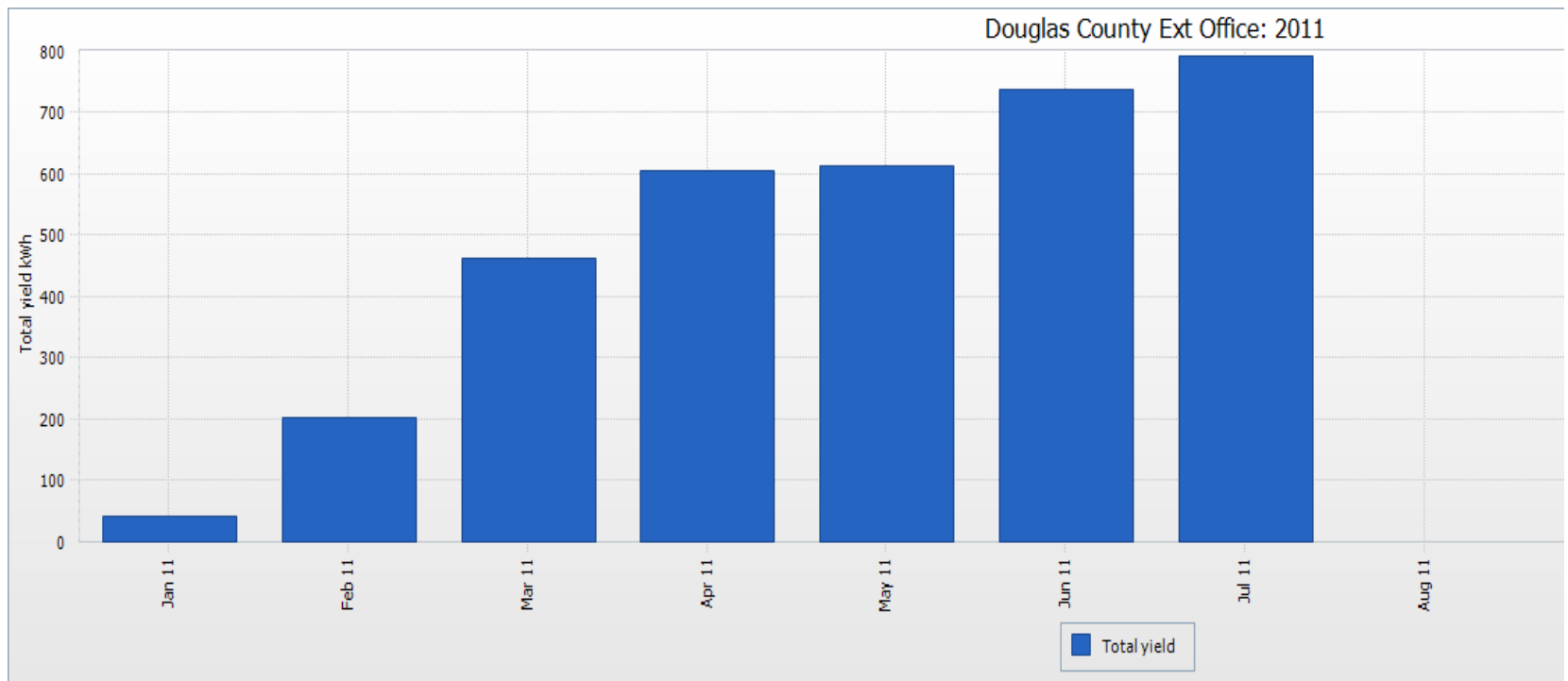
February 2010	February 2011
\$314.46	\$145.83
338.5 therms	171.6 therms

March 2010	March 2011
\$232.20	\$91.47
261 therms	98.4 therms

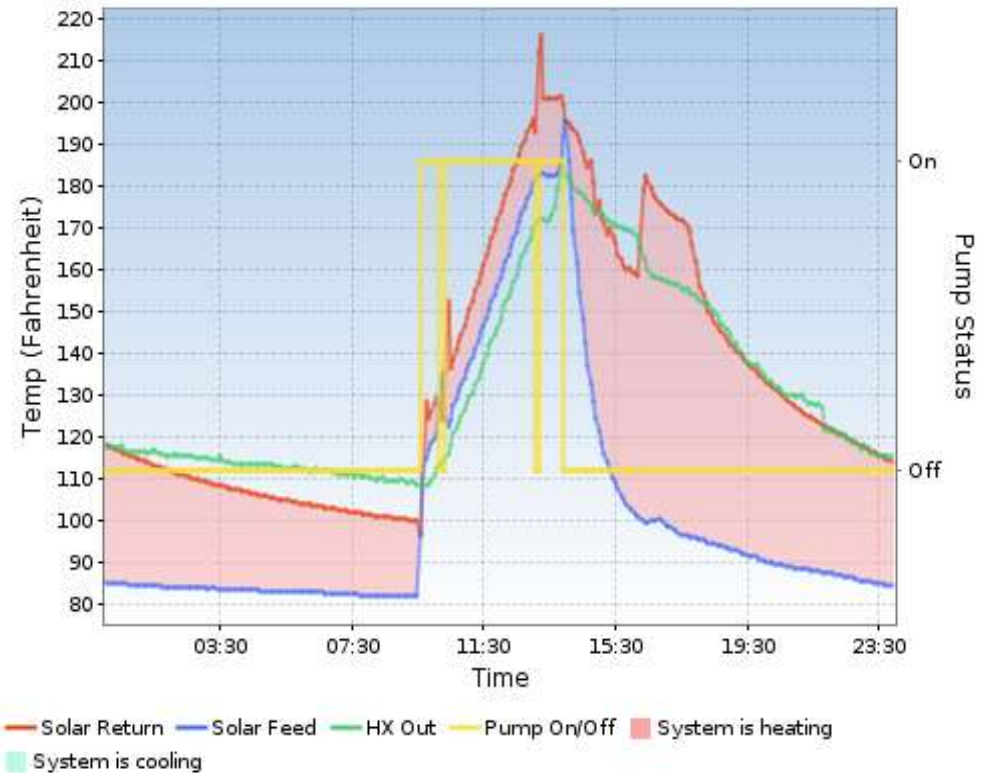


Renewable Energy:

- ✓ 3,454.62 kWh generated
- ✓ \$310.92 saved
- ✓ 5,953 lbs avoided CO₂ emissions



4. Solar thermal at Jail and Youth Services



5. Energy Audit of United Way Building

(funded by Resourceful Kansas program)

- United Way houses 21 nonprofit agencies.
- Savings achieved through energy efficiency can be passed directly on to tenants through reduced rent.
- Results in mid-Sept.



6. Take Charge Challenge

- BOTH Baldwin City and Lawrence in 1st place in their regions!
- Audits = 229
- CFL Bulbs = 30,000
- Programmable thermostats = 785
- \$100,000 prize for each community



7. Hybrid vehicles

- The vehicle replaced got 20 MPG on average;
- The Silver Fusion is averaging 33+/- MPG.
- Estimated YTD gas savings = \$300
- Significant maintenance savings.
- *unforeseen consequence: reduced personal mileage reimbursements (at \$.50/mile) *due to popularity?*



Questions?

Douglas County Sustainability Goals

Douglas County will:



- incorporate sustainable landscaping practices.
- continue to implement an organization-wide document management system to reduce paper waste.
- reduce waste (priority order: reduce consumption, reuse existing equipment, recycle or buy recycled products)
- incorporate sustainable practices into road operations.
- be more efficient with fuel consumption.



- reduce energy consumption by 30% by 2015. (2009 baseline)
- strive to meet LEED standards for certification in new County buildings.



- ***create and deliver a sustainability employee education and action campaign.***
- ***encourage sustainability as a routine and normal practice for Douglas County employees.***



- adopt policy to articulate that sustainability is a valued position.



- provide services to citizens in their homes when appropriate (i.e. online services).
- facilitate community understanding of sustainability practices.

Douglas County Sustainability Team



Sustainability Team Initiatives:

Education/Outreach to County Staff:

- Events:
 - August 12: “Brown bag” lunch with Westar on energy efficiency tips for homeowners.
 - Local produce “swap” between County staff who garden and/or shop at farmers’ market.
- Pledges to reduce use of disposables (both individual and departments).
- “Phantom” load education + use of powerstrips
 - Tracked energy use of a typical county office station and homes.
- Transition to recycled paper and remanufactured printer cartridges.
- Clerks’ office: E-poll books that would dramatically reduce paper use.

Save Energy, Save \$:
Easy ways to
slash your
energy bills!



Friday, August 12th

Session 1: 11:30-Noon

Session 2: 12:30-1:00PM

Location: EOC-A (2nd floor, Judicial Law Enforcement Building)

- Come hear from Westar Energy experts with energy-saving tips and programs (that apply to all, even if you're not a Westar customer).
- Get free energy-saving light bulbs and outlet insulators.
- Bring your own lunch, and the Sustainability Team will