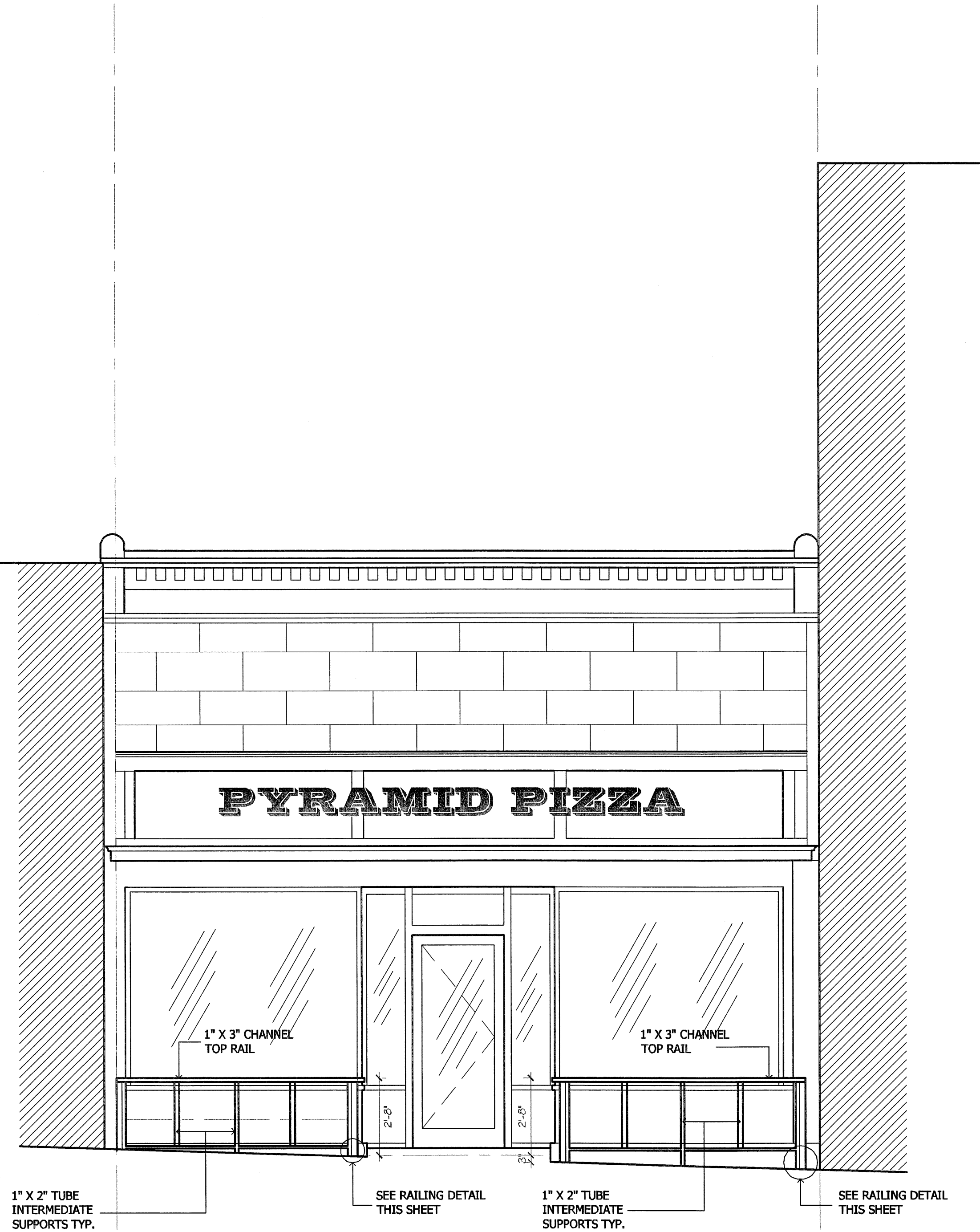


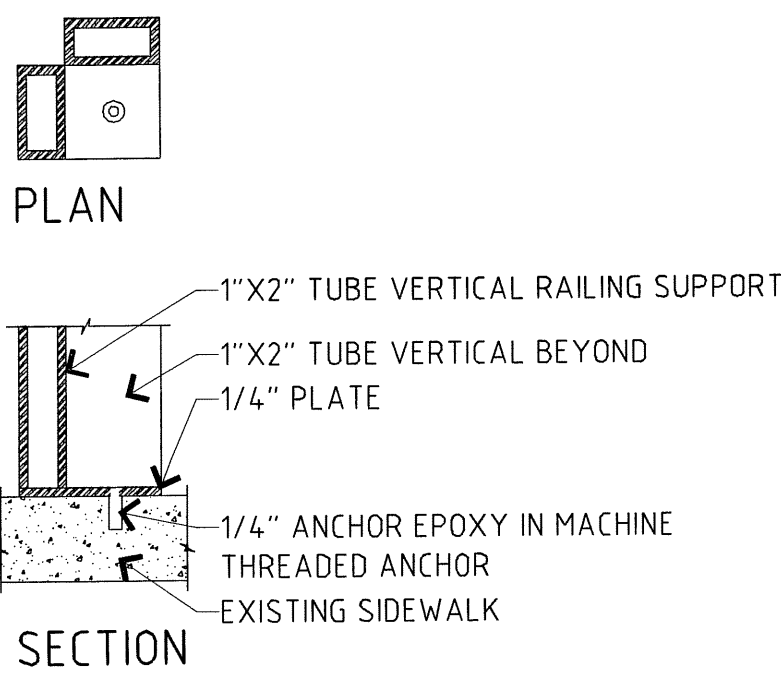
HOSPITALITY AREA INFORMATION

- The sidewalk hospitality area is subject to the provisions of Ordinance No.8274 regarding the use of sidewalks for sidewalk dining and hospitality establishments.
1. Please be advised that, on a quarterly basis the Codes Enforcement Division will visually inspect the location of each licensed sidewalk dining licensee and inspect the sidewalk dining area. The Codes Enforcement Division will verify the licensee is operating the sidewalk dining area consistent with the site plan and conditions; Use of Right of Way Agreement; all applicable City Code provisions; and Guidelines for Sidewalk Dining Areas. Specifically, the Codes Enforcement Division will verify:
- 1.1. The sidewalk dining area is not being used when the restaurant or food service establishment is closed;
 - 1.2. Advertisement signage is not present in the sidewalk dining area except for the name of the establishment on chairs or tables as approved by the City;
 - 1.3. All amenities including railings, barriers, chairs, and table are maintained in good condition;
 - 1.4. There is no blocking of building entrances or exists in the sidewalk dining area;
 - 1.5. The sidewalk dining area; the area from the front building facade to the curb line; and five (5) feet along the adjacent sidewalk to both sides of the sidewalk dining area; contain no trash;
 - 1.6. No trash or refuse storage containers are in the sidewalk dining area; the or on adjacent sidewalk areas;
 - 1.7. Pursuant to Section 9-902 of the City Code, sidewalk dining areas must be managed to prevent stormwater pollution;
 - 1.8. Food waste, trash, cigarettes and other solid wastes must be contained, collected, and disposed properly. Collection must be frequent enough to prevent wastes carried off by wind or stormwater runoff;
 - 1.8.1. Wastewater from the cleaning of pavement, buildings, furniture or other outdoor surfaces must be collected and discharged to the sanitary sewer system or other approved wastewater treatment process. Installation of a nearby sewer is recommended for this purpose;
 - 1.8.2. Pavement and furnishings must be cleaned frequently enough to prevent contamination of stormwater runoff;
 - 1.9. Food preparation is not permitted within sidewalk dining areas;
 - 1.10. If the establishment no longer has a current sidewalk dining license, the Codes Enforcement Division will contact the former licensee or owner of the premises to require removal of the railing or other amenities (chairs, tables, etc.) remaining in the right of way.
2. Please be advised that for sidewalk dining licensees with a valid drinking establishment license and City Commission approval to sell, and its patrons to possess and consume alcoholic beverages in the public right of way, the Codes Enforcement Division will inspect the sidewalk dining area to ensure compliance with the following:
- 2.1. Possession and consumption of alcohol in the sidewalk dining area is limited to patrons seated at tables;
 - 2.2. An employee of the licensee is working in the sidewalk dining area, or otherwise able to monitor the sidewalk dining, to prevent alcoholic beverages from leaving the licensed premises and to ensure compliance with other alcohol related provisions;
 - 2.3. All alcohol beverages consumed in the sidewalk dining area are in appropriate containers (no glasses, cans, or bottles) unless the establishment demonstrates it meets the 55% food sales requirement;
 - 2.4. No taps, kegs, coolers or other alcoholic beverage storage devices are used in the sidewalk dining area.



FRONT ELEVATION (WEST ELEV.)

1/4" = 1'-0"



RAILING CONNECTION DETAIL

3" = 1'-0"

1029 Massachusetts

Pyramid Pizza
Lawrence, KS 66044

RON W. DERUSSEAU,
ARCHITECT P.A.

1768 E. 1310 ROAD
LAWRENCE, KS. 66044
785-841-7333 OR 785-423-4383
E-MAIL: RWD@SUNFLOWER.COM

07/27/2011 SUBMITTAL

SHEET
SP-2