



Description – Crack Sealing performed by Internal Street Maintenance Division (photo of cracks & joints being cleaned out prior to sealing)



Description – Crack Sealing performed by Internal Street Maintenance Division



Description – Area marked for Contracted Patching in north Lawrence prior to Microsurfacing



Description – Contracted Patching in north Lawrence in preparation for Microsurfacing



Description – Contracted Patching preparation for Microsurfacing on W 18th St at Carmel Dr



Description – Contracted Microsurfacing/Patching w/ Pavement Markings on Clinton Parkway west of Wakarusa Dr



Description – Contracted Microsurfacing/Patching w/ Pavement Markings
on Elm St east of N 2nd St



Description - Contracted Milling and Patching on Oxford Rd to University Dr prior to Overlay



Description - Contracted Milling & Overlay on Forrest Ave at Maryland St with coordinated Concrete Curb Replacement work performed by Internal Street Division



Description - Contracted Milling & Overlay on St Andrews Dr at Seminole Dr



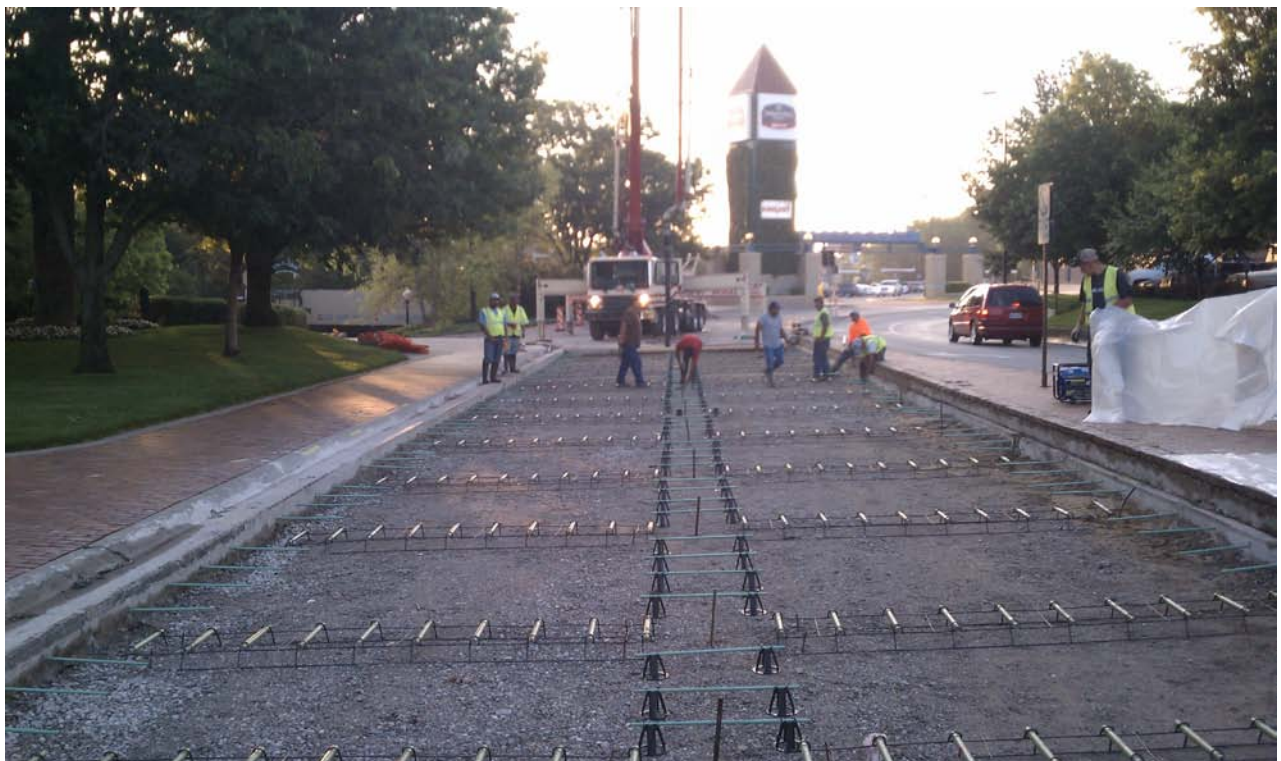
Description - Contracted Milling & Overlay on Tennessee St from W 9th St to W 19th St



Description – Contracted Concrete Curb & Gutter work prior to Milling & Overlay on W 22nd St between Ousdahl Rd & Naismith Dr



Description – Contracted Concrete Reconstruction of Crestline Dr from south of Orchard Ln to Westdale Rd which includes Underdrain System installation (photo during pavement removal)



Description – Contracted Concrete Reconstruction of E 6th St east of Massachusetts St



Description – Contracted Concrete Reconstruction east of E 6th St & Massachusetts St



Description – Contracted Concrete Curb & Gutter Repair with Concrete Pavement Patching in Downtown Lawrence (left picture - prior to work, right picture - during removal/replacement)



Description – Contracted Concrete Curb & Gutter Repair along with Concrete Pavement Patching in Downtown Lawrence
(above - prior to work, below – removal/replacement completed)



Description – Contracted Reconstruction of westbound driving lanes of Bob Billings Parkway east of Kasold Dr during Pavement Removal and Subgrade Preparation & Treatment



Description – Contracted Milling & Overlay (KLINK) of E 6th St at Massachusetts St (photo taken during overlay and restriping)