

VIEW FROM MASSACHUSETTS

NOT SHOWN:
TALLER CORNER ELEMENT
AT NORTHWEST, ADDITIONAL
CORNICE DETAIL.
SEE 7/13/11 COLOR
ELEVATIONS.

Dillons

1740 MASSACHUSETTS ST
LAWRENCE, KS 66044



VIEW FROM MASSACHUSETTS

NOT SHOWN:
TALLER CORNER ELEMENT AT NORTH
WEST, ADDITIONAL CORNICE DETAIL.
SEE 7/13/11 COLOR ELEVATIONS.

Dillons

1740 MASSACHUSETTS ST
LAWRENCE, KS 66044





CAST BRICK
MILLER MATERIAL CO: **BUFF**

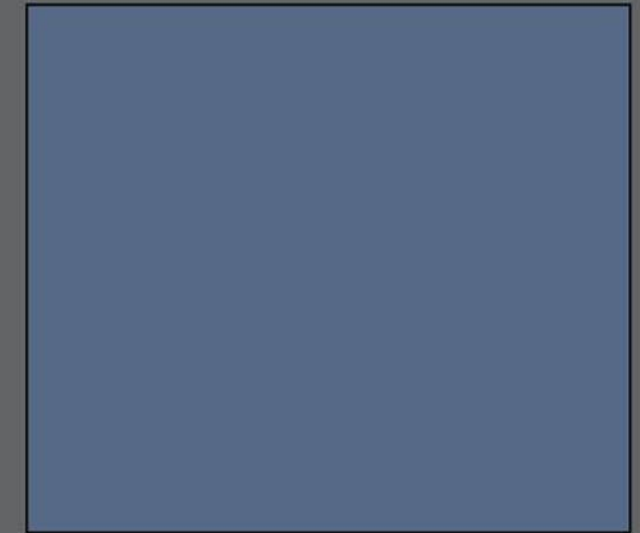


CAST BRICK
MILLER MATERIAL CO: **MISSOURI WHITE**



CAST BRICK
MIDWEST PRODUCTS GROUP, SPEC-BRIK: **A1**

CAST STONE
ARCHITECTURAL CAST STONE, INC.: **WHITE**



PAINTED MASONRY
SHERWIN WILLIAMS: **DENIM B-G/B/138 SW 6523**



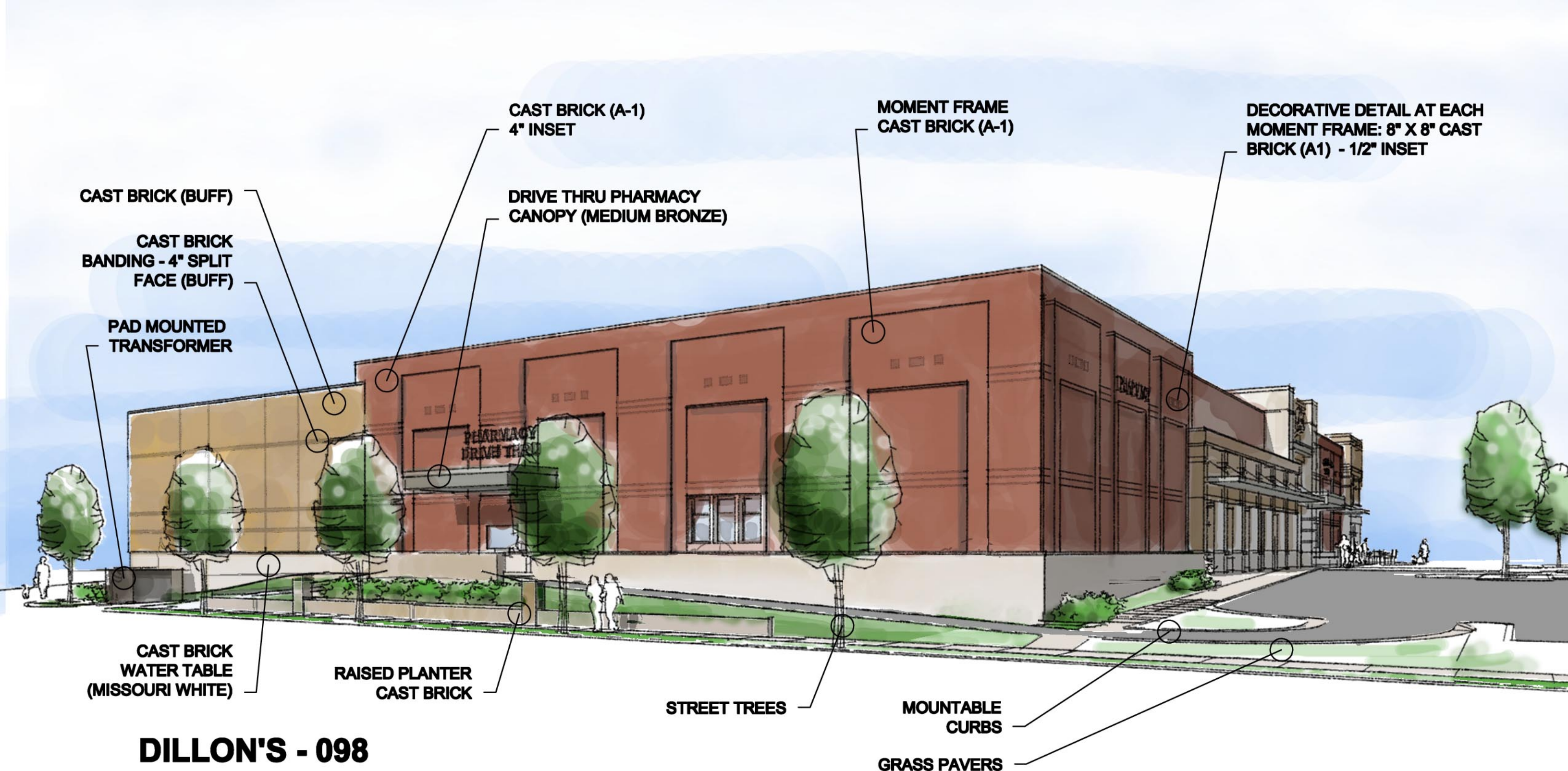
ALUMINUM
SHERWIN WILLIAMS, SHER-NAR: **MEDIUM BRONZE H67NC0058**



DILLON'S - 098

MATERIAL BOARD

11/30/2010 ORIGINAL SUBMISSION TO
HISTORIC RESOURCES COMMITTEE



DILLON'S - 098
NORTHEAST VIEW

1740 MASSACHUSETTS ST
LAWRENCE KANSAS

MARCH 18, 2011
ARCHITECTURAL REVIEW COMMITTEE RESUBMITTAL



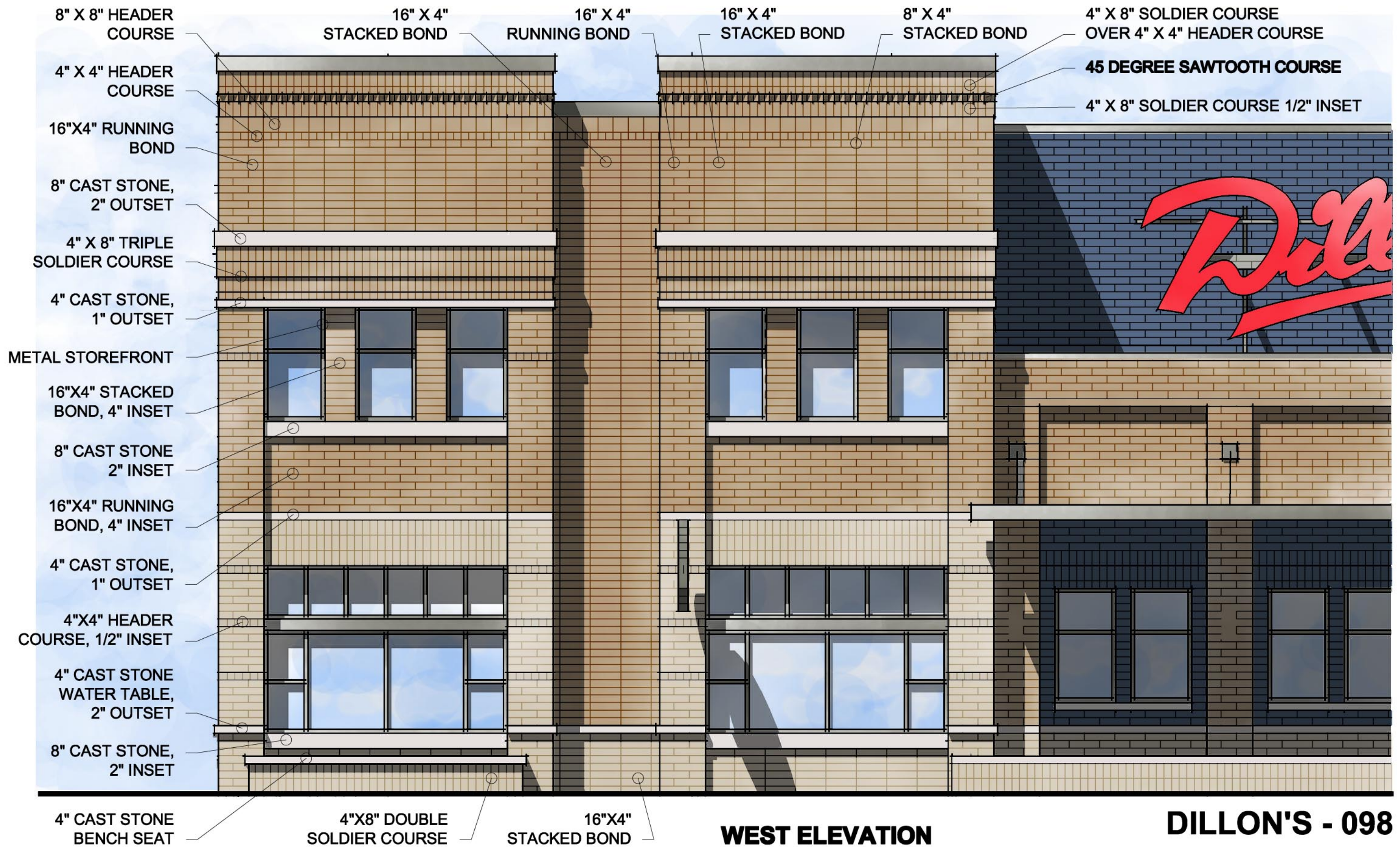
**DILLON'S - 098
CORNER BUILDING**

1740 MASSACHUSETTS ST
LAWRENCE KANSAS

**NORTH ELEVATION
SCALE: 1/4" = 1'-0"**

APRIL 18, 2011

ARCHITECTURAL REVIEW COMMITTEE RESUBMITTAL



WEST ELEVATION
SCALE: 1/4" = 1'-0"

APRIL 18, 2011
ARCHITECTURAL REVIEW COMMITTEE RESUBMITTAL

DILLON'S - 098
CORNER BUILDING

1740 MASSACHUSETTS ST
LAWRENCE KANSAS.

SEE ENLARGED
ELEVATIONS FOR
DECORATIVE BRICK
DETAILING AT CORNICE,
FRIEZE, AND STOREFRONT
OF CORNER BUILDING

TOP OF WALL 32'-4" ABOVE GRADE

TOP OF ADJACENT WALLS WALL 29'-4" ABOVE GRADE

DECORATIVE DETAIL AT EACH
MOMENT FRAME: 8" X 8" CAST
BRICK (A1) - 1/2" INSET

RELOCATED BICYCLE
PARKING, 12 LINEAR FEET

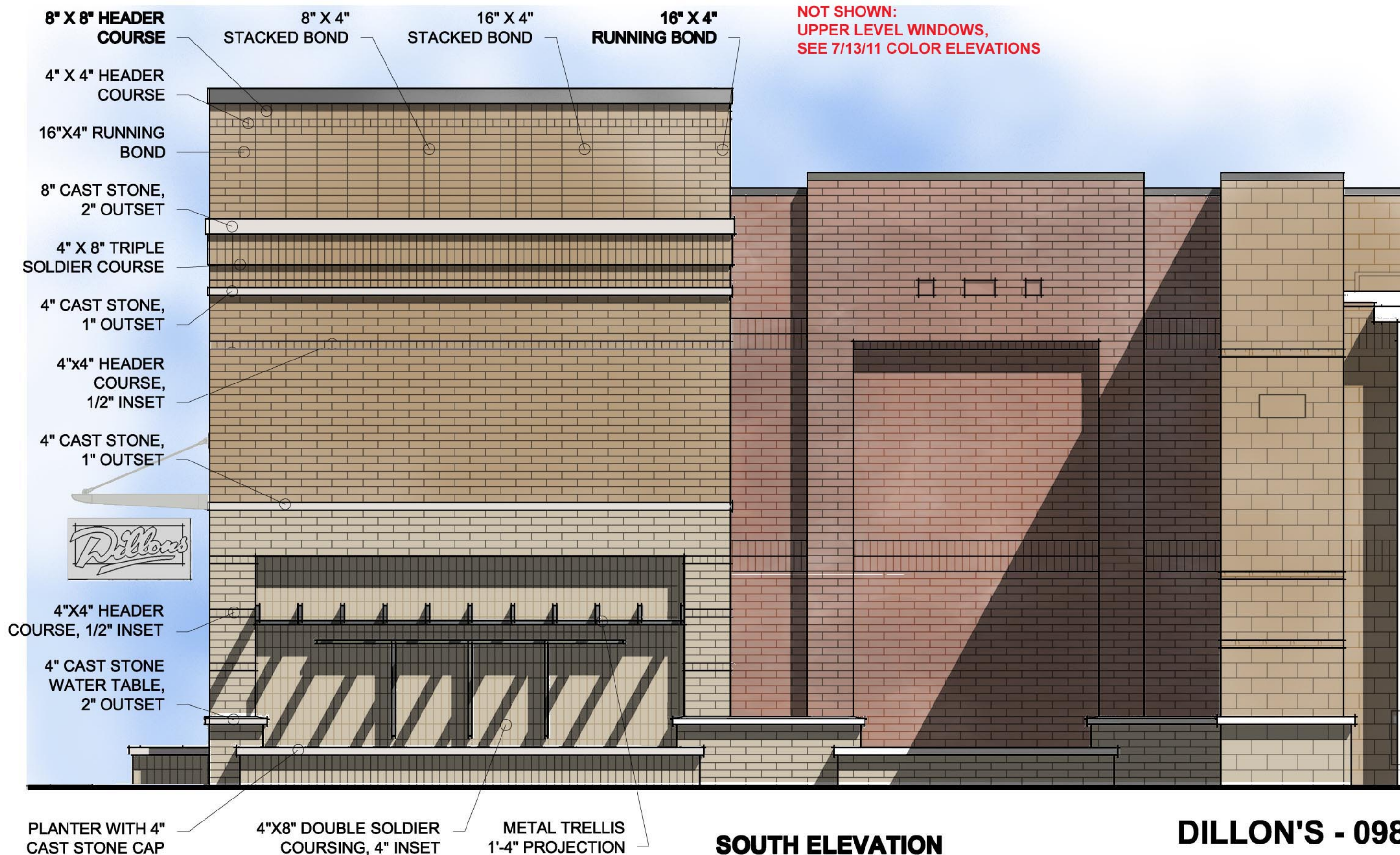
NOT SHOWN:
AWNINGS OVER WINDOWS AND
SOUTH WEST CORNER ELEMENT.
SEE 7/13/11 COLOR ELEVATIONS

DILLON'S - 098

NORTHWEST VIEW

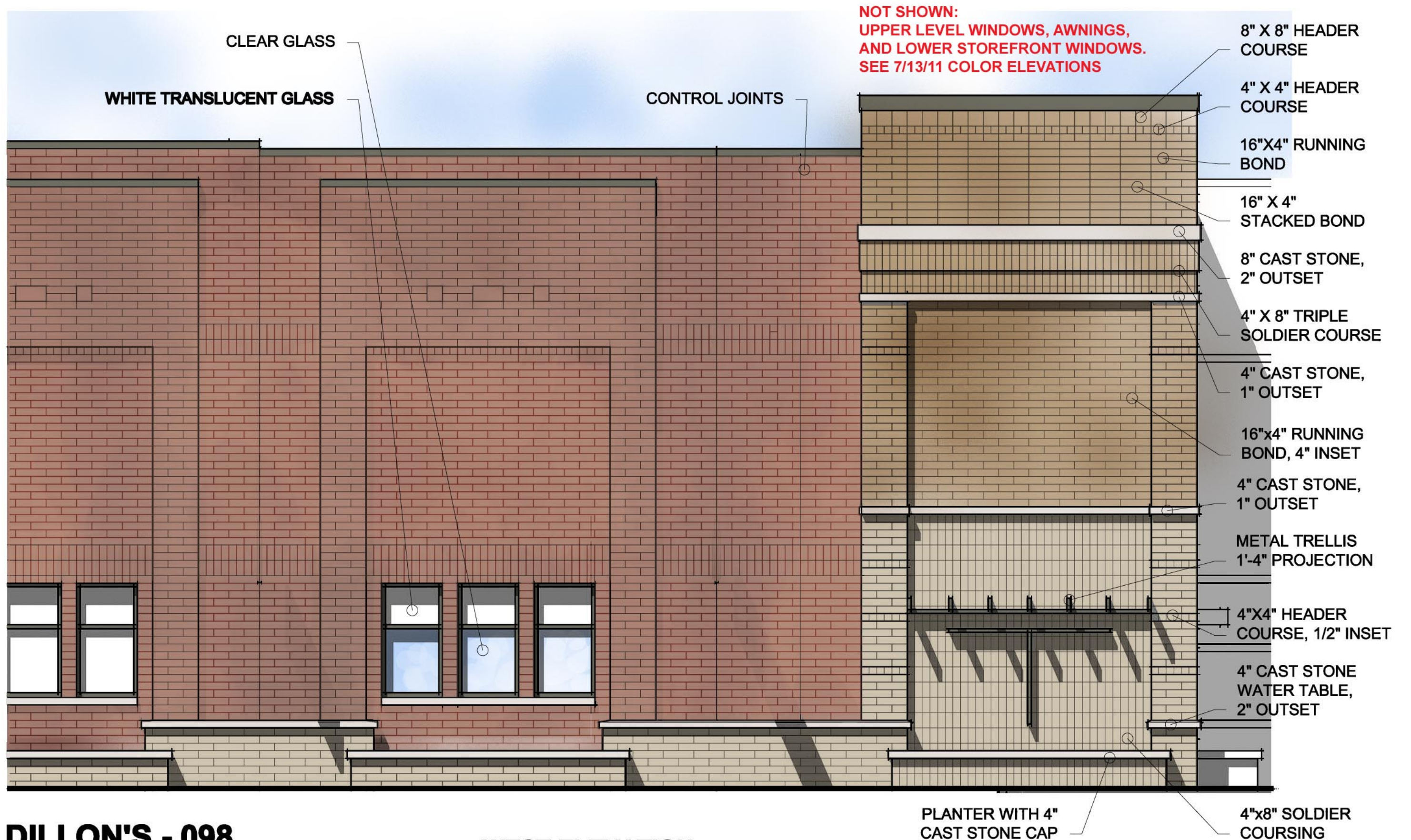
1740 MASSACHUSETTS ST
LAWRENCE KANSAS

APRIL 18, 2011
ARCHITECTURAL REVIEW COMMITTEE RESUBMITTAL



SOUTH ELEVATION
SCALE: 1/4" = 1'-0"

JUNE 22, 2011
ARCHITECTURAL REVIEW COMMITTEE RESUBMITTAL



DILLON'S - 098
SOUTHWEST CORNER

1740 MASSACHUSETTS ST
LAWRENCE KANSAS

WEST ELEVATION
SCALE: 1/4" = 1'-0"

JUNE 22, 2011

ARCHITECTURAL REVIEW COMMITTEE RESUBMITTAL

NORTH ELEVATION



Dillon's

1740 MASSACHUSETTS ST
LAWRENCE, KS 66044

WEST ELEVATION



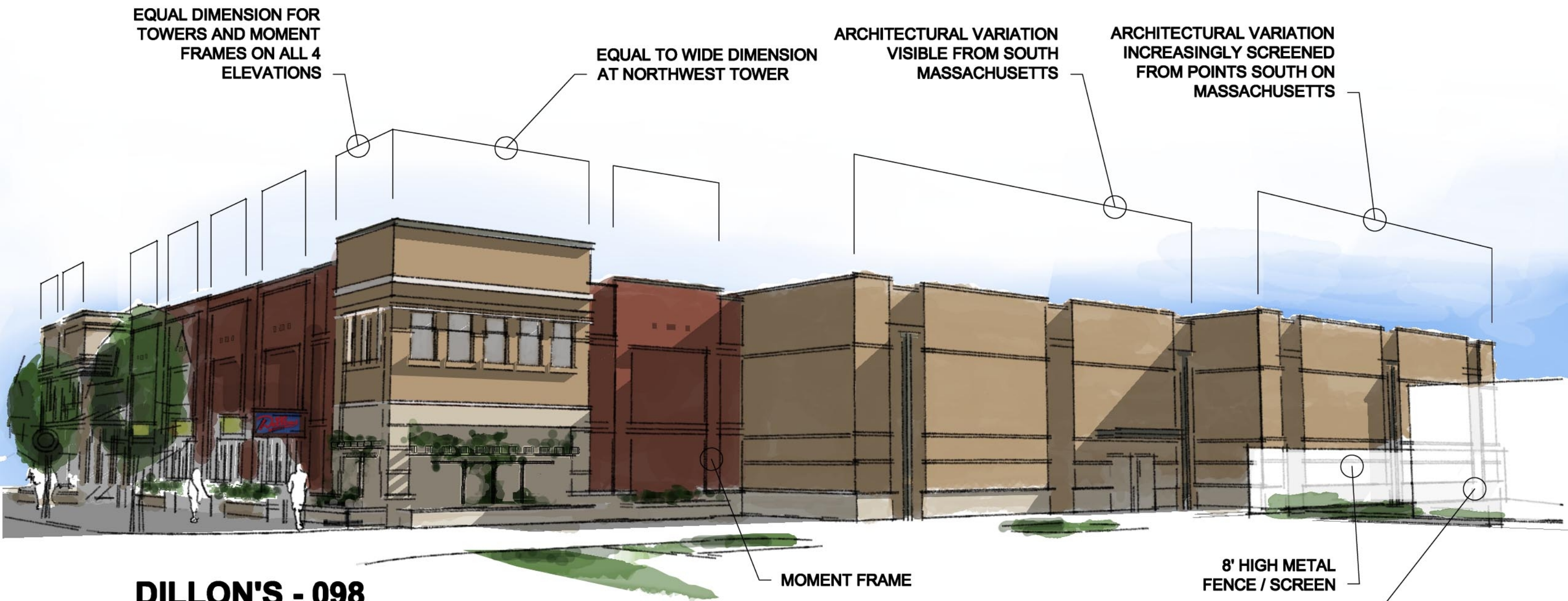
SOUTH ELEVATION



EAST ELEVATION



ARC RE SUBMITTAL 7-13-11



DILLON'S - 098

SOUTHWEST VIEW

1740 MASSACHUSETTS ST
LAWRENCE KANSAS

JULY 15, 2011

SKETCH OF MOMENT FRAME & TOWER DIMENSIONS