

Dillon's

1740 MASSACHUSETTS ST
LAWRENCE, KS 66044

paradigm

ARC RE SUBMITTAL 7-01-11

Pickering



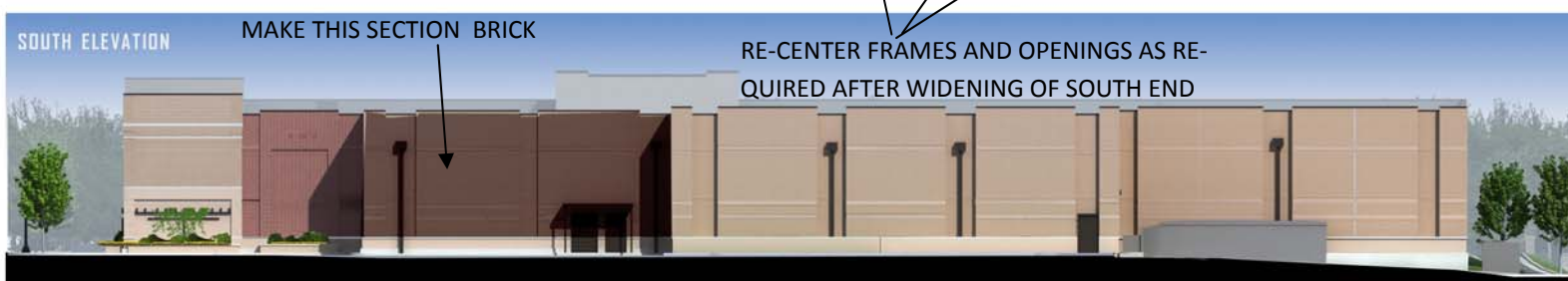
Dillons

1740 MASSACHUSETTS ST
LAWRENCE, KS 66044



MAKE THIS SECTION WIDER
FOR BETTER BALANCE

MAKE THIS SECTION BRICK



MAKE THIS SECTION BRICK

RE-CENTER FRAMES AND OPENINGS AS RE-
QUIRED AFTER WIDENING OF SOUTH END



ARC RE SUBMITTAL 7-01-11