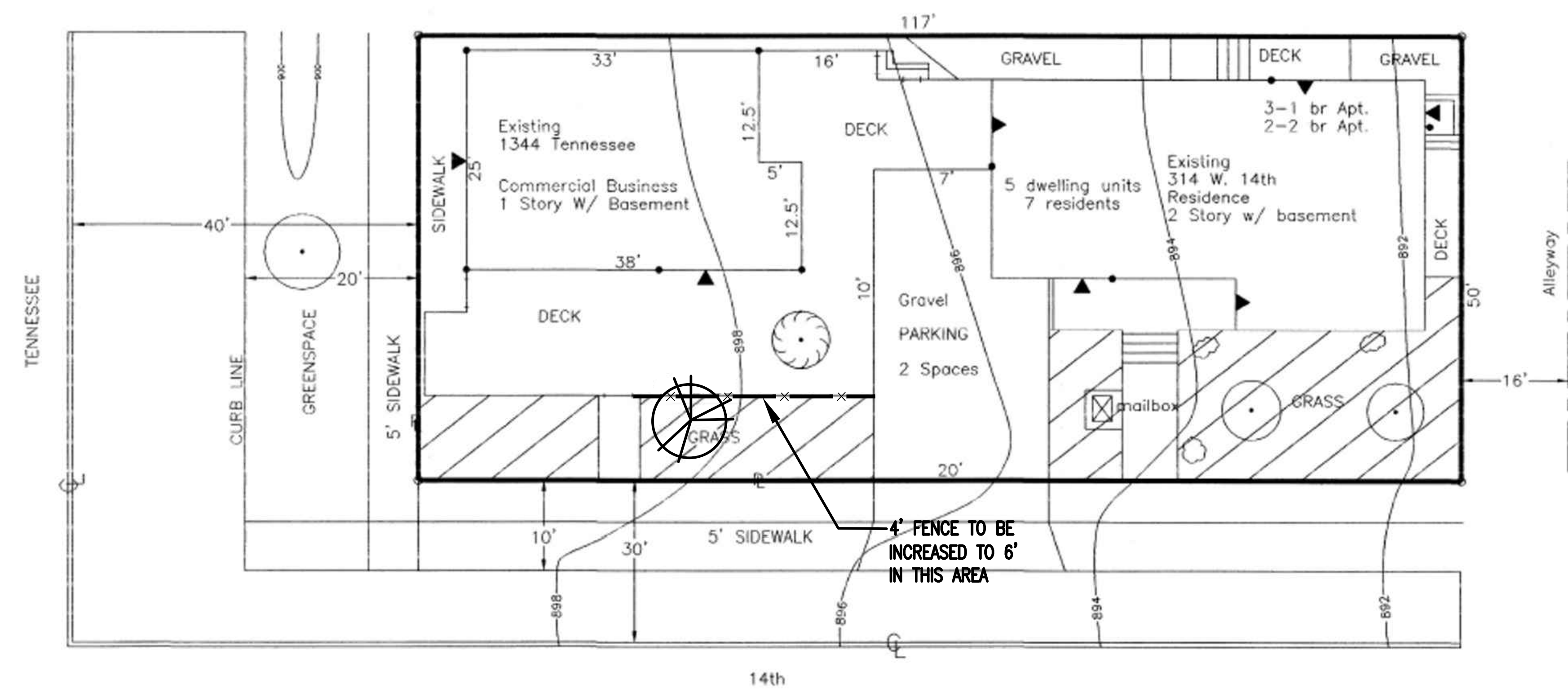




SITE PLAN OF LOT #216  
LAWRENCE, KS 66044  
7/2/02.



Site Summary

TOTAL	Existing	Proposed
	5850 SF	5850 SF
Pervious Area	1200 SF	1200 SF
Impervious	4,650	4,650

Existing Landscape

- Bradford Pear 3
- Elm 1
- Burning bush 3

Proposed Landscape

- Red Sunset Maple 1

AREAS:	5,850 SF
BUILDINGS:	
1344 TENN.	868 FT <sup>2</sup>
314 W. 14th	1,228 FT <sup>2</sup>
GRASS	1,200 FT <sup>2</sup>
PARKING	614 FT <sup>2</sup> - 2 Spaces existing

SCALE 1"=10'

Notes

1. Trash enclosure shared w/ property at 1340 tenn. (off site)
2. Zoning = RD
3. Proposed use=continued operation of commercial business
4. Legal  
Lot 216 on Tennessee Street  
City of Lawrence, Kansas - Wyandott Reserve No. 12
5. AC is roof mounted
6. • = wall mounted motion sensing lighting
7. Only 2 Spaces provided on site - Non-Conforming

Additional Information

Non-Conforming Use File (N-07-01-02)  
Historic Design Review File (DR-08-50-02)

Revisions

1. 6-8-11 South fence from the east side of the gate to the east end of the deck along 14th Street will be increased from 4' to 6'.  
One street tree will be added on the north side of 14th Street near the gate.  
Revisions made by: Paul Werner Architects, 123 W. 8th St., Lawrence, KS 66044, 785-832-0804

Site Plan for 1344 TENNESSEE

IS TO REINFORCE FOUNDATION WALLS AND  
REPAIR SOUTH AND EAST EXTERIOR WALLS