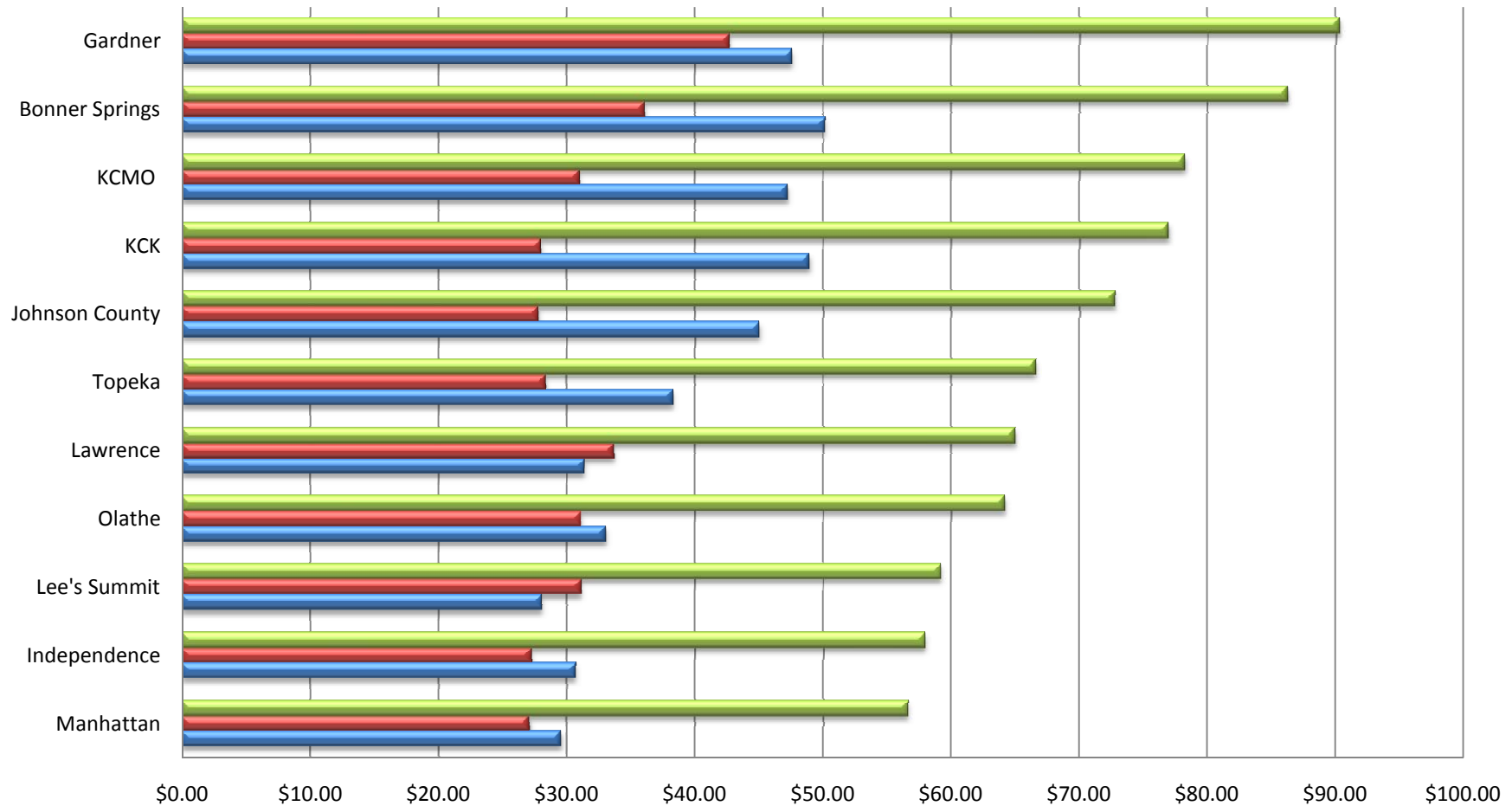
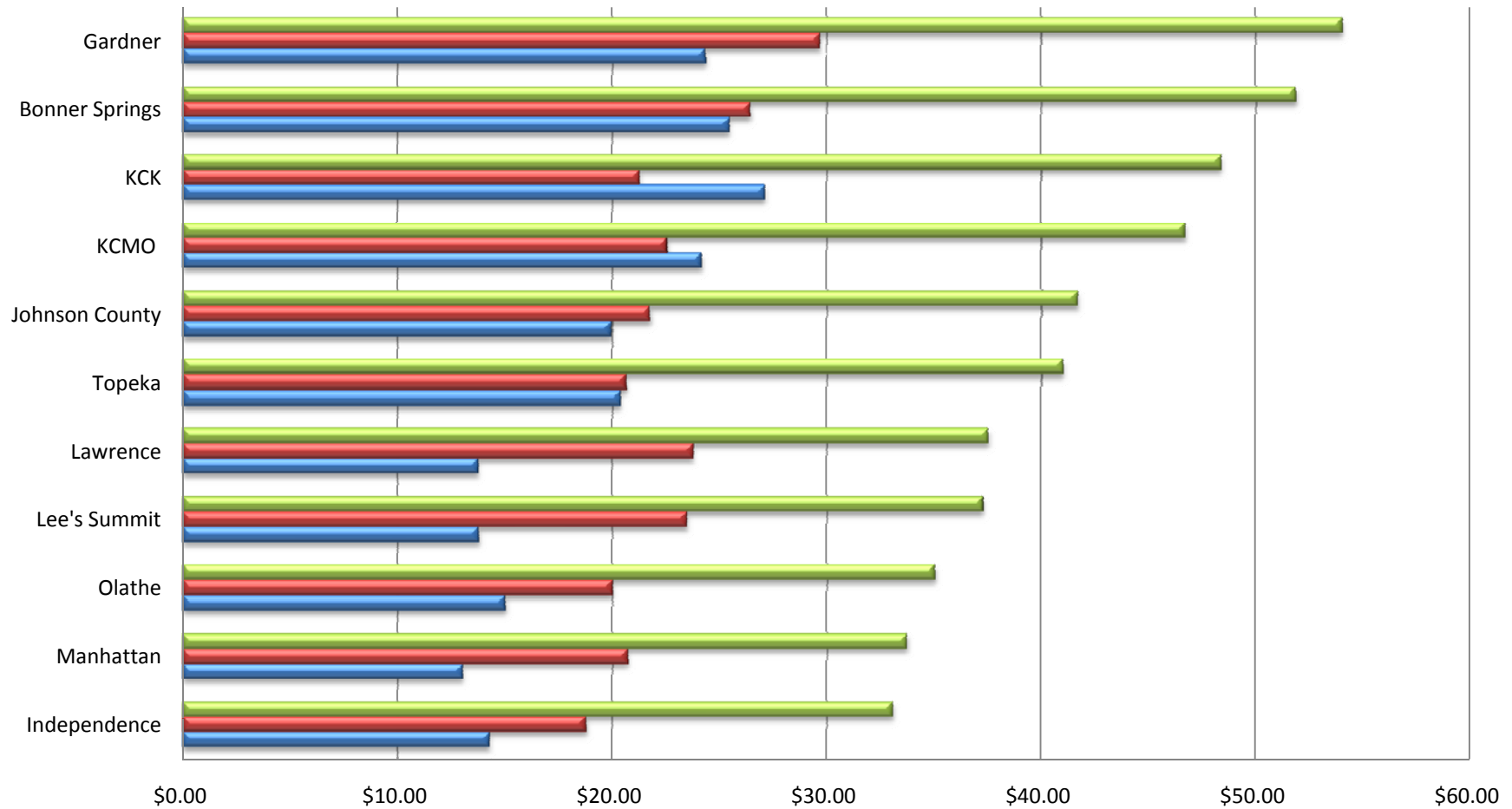


2011 Typical Residential Monthly Utility Bill Comparison (8,000 gal.)



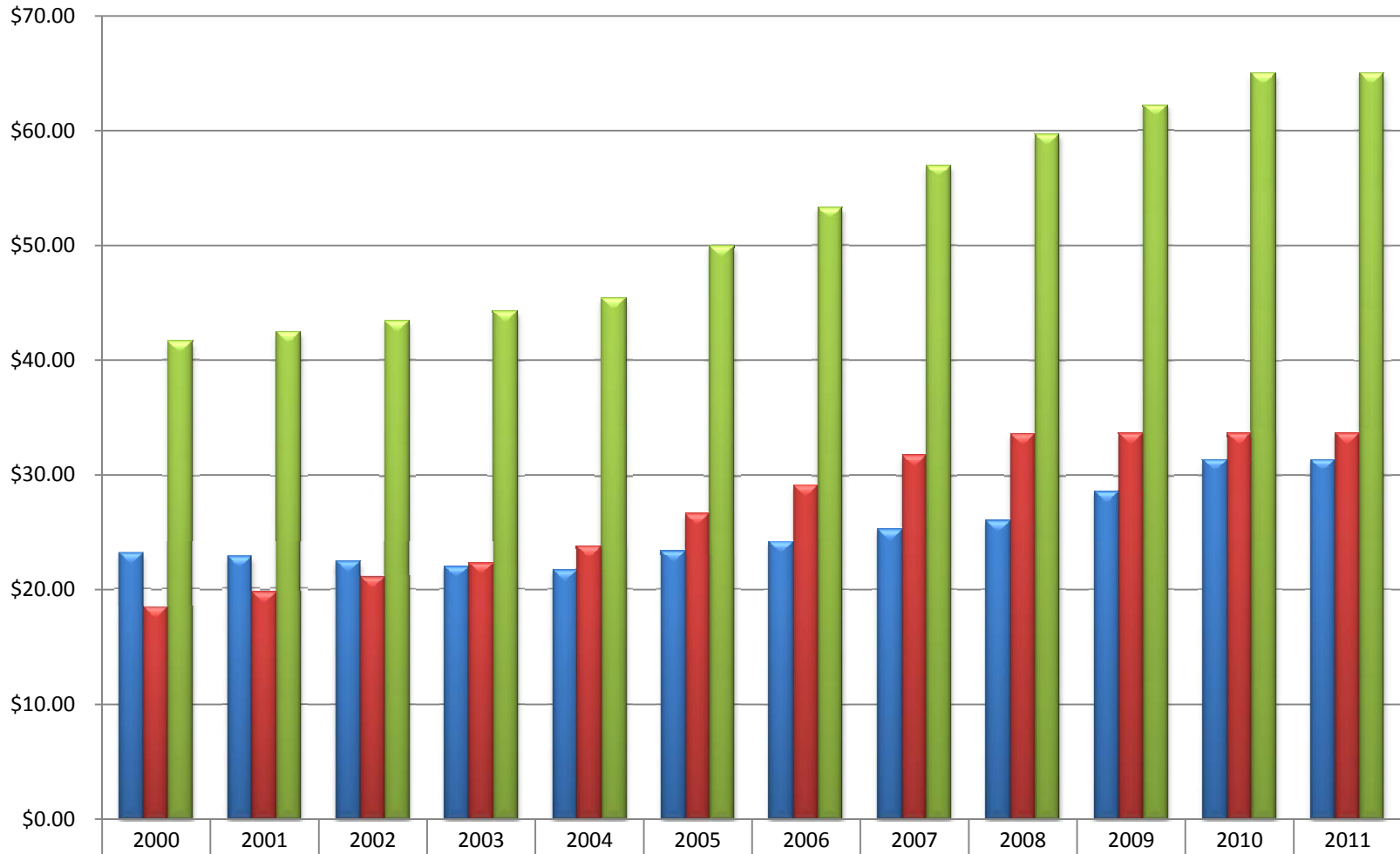
	Manhattan	Independence	Lee's Summit	Olathe	Lawrence	Topeka	Johnson County	KCK	KCMO	Bonner Springs	Gardner
Monthly Bill	\$56.68	\$57.98	\$59.21	\$64.19	\$65.02	\$66.63	\$72.81	\$76.98	\$78.28	\$86.29	\$90.30
Sewer (5,000 gal.)	\$27.10	\$27.26	\$31.15	\$31.15	\$33.66	\$28.36	\$27.80	\$28.01	\$31.01	\$36.10	\$42.70
Water (8,000 gal.)	\$29.58	\$30.72	\$28.06	\$33.04	\$31.36	\$38.27	\$45.01	\$48.97	\$47.27	\$50.19	\$47.60

2011 Typical Residential Monthly Utility Bill Comparison (3,000 gal.)



	Independence	Manhattan	Olathe	Lee's Summit	Lawrence	Topeka	Johnson County	KCMO	KCK	Bonner Springs	Gardner
Monthly Bill	\$33.08	\$33.73	\$35.03	\$37.27	\$37.54	\$41.01	\$41.71	\$46.72	\$48.40	\$51.88	\$54.05
Sewer (3,000 gal.)	\$18.80	\$20.71	\$20.02	\$23.49	\$23.78	\$20.64	\$21.76	\$22.57	\$21.29	\$26.44	\$29.70
Water (3,000 gal.)	\$14.28	\$13.01	\$15.01	\$13.78	\$13.76	\$20.37	\$19.95	\$24.15	\$27.12	\$25.44	\$24.35

Lawrence - Typical Residential Monthly Utility Bill (8,000 gal.)



Water (8,000 gal.)	\$23.14	\$22.78	\$22.35	\$21.99	\$21.67	\$23.31	\$24.19	\$25.22	\$26.01	\$28.54	\$31.36	\$31.36
Sewer (5,000 gal.)	\$18.46	\$19.70	\$21.07	\$22.28	\$23.69	\$26.65	\$29.05	\$31.70	\$33.60	\$33.66	\$33.66	\$33.66
Monthly Bill	\$41.60	\$42.48	\$43.42	\$44.27	\$45.36	\$49.96	\$53.24	\$56.92	\$59.61	\$62.20	\$65.02	\$65.02