

AMERICAN FALLEN WARRIOR MEMORIAL FOUNDATION

March 16, 2011

Dear Mayor,

The American Fallen Warrior Memorial Foundation is interested in building the American Fallen Warrior Memorial in or near your city. We are looking for an adequate piece of property that matches the description on the attached specs. We will need approximately 20 acres of donated land to accommodate the Memorial and required parking.

The mission of the American Fallen Warrior Memorial Foundation is to honor, preserve and protect the legacies of all Fallen Warriors who have given their lives in the Gulf War, Operation Desert Storm, Operation Desert Shield, Operation Iraqi Freedom, Operation Enduring Freedom and all peripheral operations in the war on terror. We will do this by building a memorial that will contain bronze plaques displaying the faces of every serviceman and woman who have giving their lives in the services of defending and protecting our country including PTSD/Suicides from the Gulf War to present date.

Our secondary mission is to educate the children of a Grateful Nation about the sacrifices being made to protect our freedoms. Educating our youth is the only way to ensure that their sacrifice will not be forgotten. We believe that we must preserve the legacies of these brave men and women and teach the value of remembering their sacrifices.

The Memorial will mean tourism for your city. As of today Central Command has confirmed over 5911 confirmed Casualties and those numbers continue to climb. The scale this memorial will make it the largest Memorial in US. History and the only living Memorial meaning it will be built as the battle rages on.

We have attached the designer's specs, and a CD with design pictures so you can get a better idea of what it will look like. We are making the same proposal to a few other cities in the area but are anxious to hear your thoughts on this matter. We are currently in the beginning phases of fundraising, which will target large corporate sponsors as well as our "igavemycoins" campaign. This campaign is directed mainly towards schools, churches, scouting and organizations. This encompasses a patriotic education program.

You can contact us at the numbers or email below. We look forward to speaking with you. Thank you for your consideration in this matter.

Tonya Evans
tonya@afwmf.org
CEO/Founder
American Fallen Warrior Memorial Foundation



AFWMF
3514 Clinton Parkway
Box 370
Lawrence, Kansas 66047

PHONE (855) 647-3411
FAX (866) 302-3690
E-MAIL info@AFWMF.org
WEB SITE www.AFWMF.org
www.igavemycoins.com

AMERICAN FALLEN WARRIOR MEMORIAL INFORMATION

MEMORIAL LAND PREFERENCE:

- Located along I-70 corridor.
- Memorial to be no more than 1 mile away from I-70.
- Land to have access to basic utilities.
 - a) Power
 - b) Storm/Sewer (prefer non –septic tanks)
 - c) Domestic water (well or city)
 - d) Access to telecommunication lines
- Access to easy traffic flow/circulation (can roads accommodate traffic flow- traffic studies may be required.
- Land allotment:
 - a) Minimum amount 14 acres (as shown in illustrations) [parking held to roughly 280 including 7 buses]. This will accommodate most large gatherings if more spaces are needed could use an agreement working with local properties /businesses. (Eco-friendly)
 - b) If required to hold all parking on site for large gatherings then 20 acres [support 400+ cars and buses] would be required.
- Land needs to be zoned for proper use to accommodate project in meeting local codes.
 - a) Occupancies
 - b) Usage
 - c) height limits

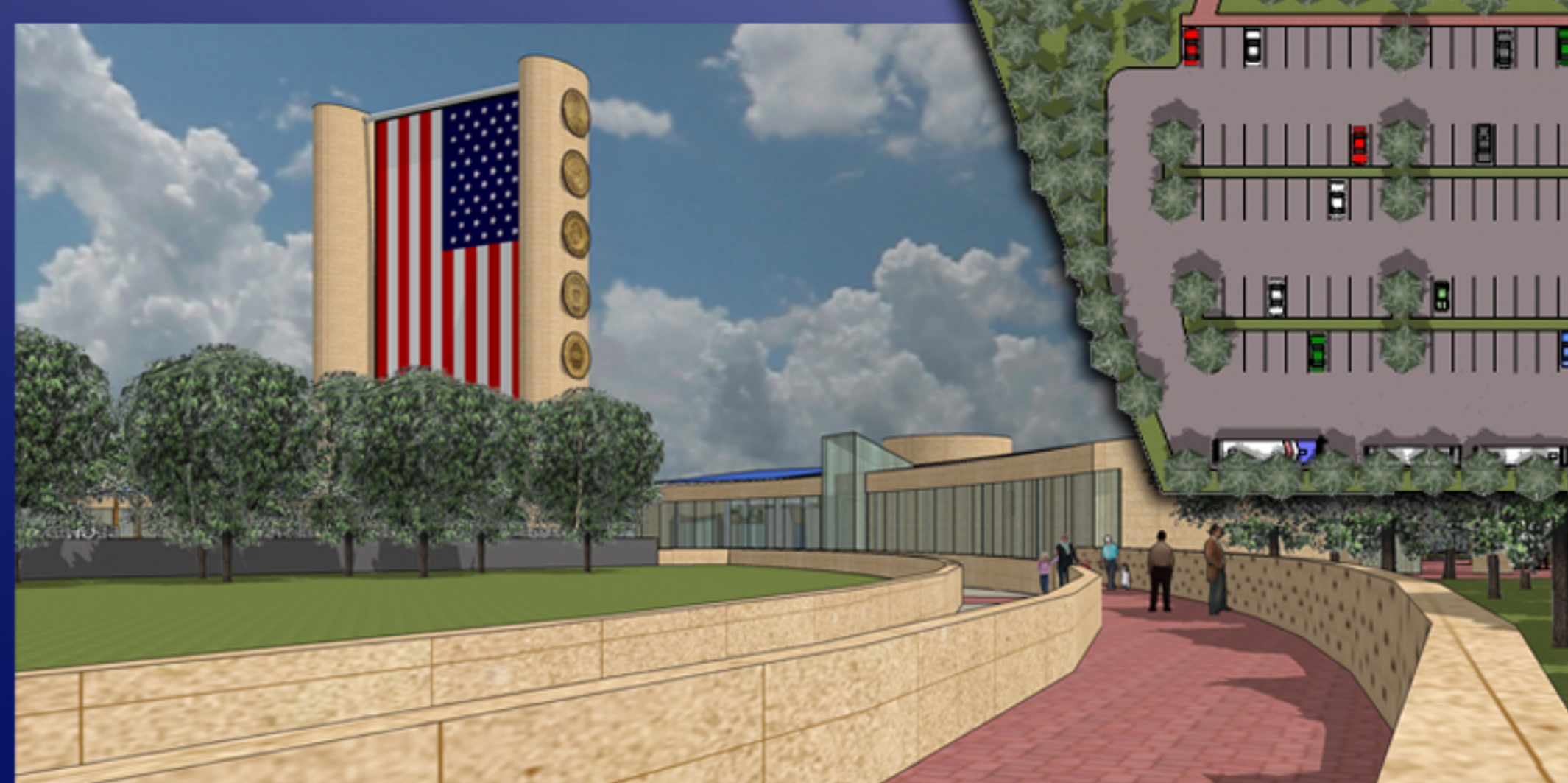
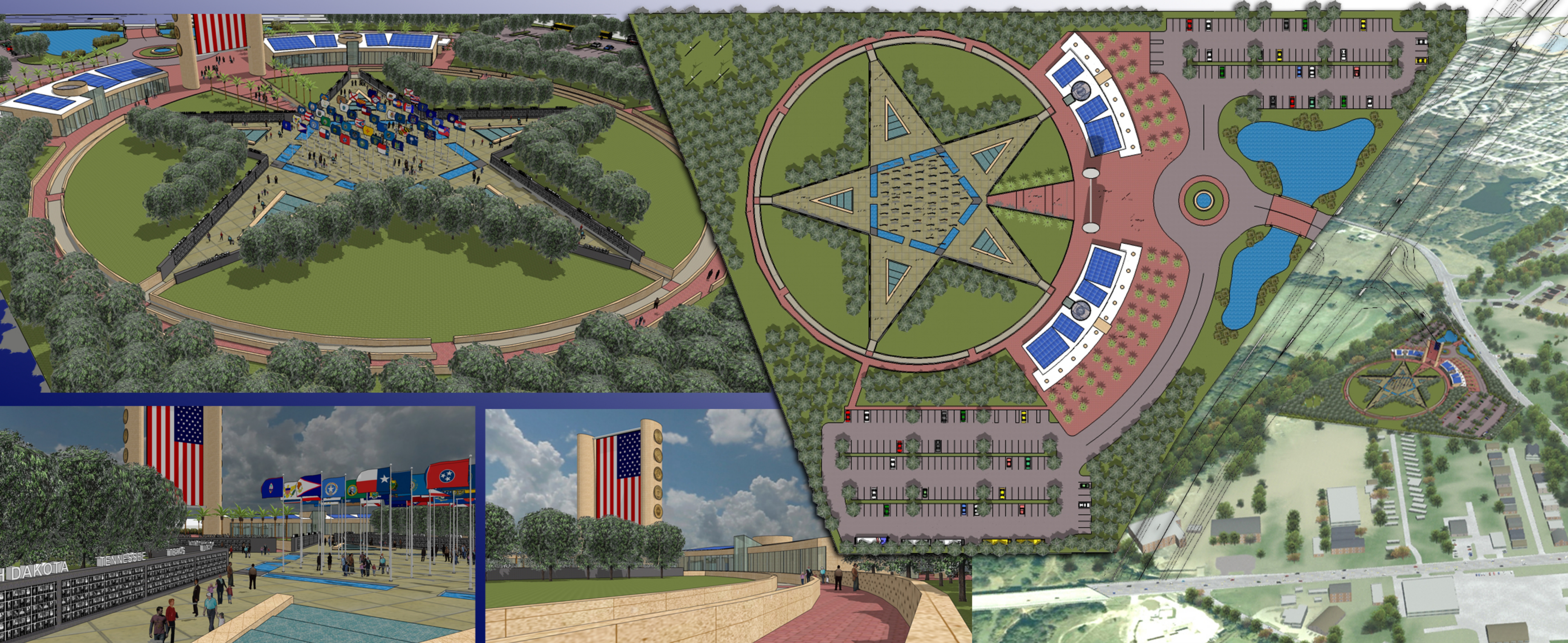
- Locate along public transportation hubs/stops.
- Land ownership, title/deeds, and insurance

MEMORIAL PROGRAM:

- The memorial shall be designed with LEED (Leadership in Energy and Environmental Design) Principals. Making it Eco-friendly.
- The use of local resources.
 - a) New materials
 - b) Labor
 - c) Recycled/Reuse materials
- Memorial to produce its own power through solar and wind turbine use.
- Reuse of water collected on site from rain runoff (cisterns).
- Memorial use of geothermal heating and cooling systems.
- Memorial Tower/Landmark:
 - a) 130' high towers
 - b) Supporting National Flag
 - c) Military seals along sides of towers
- Memorial Building (11,000+ sf):
 - a) Exhibit Hall
 - b) Auditorium
 - c) Information Center
- Foundation Building (7,400+ sf):
 - a) Administration
 - b) Outreach/Support rooms
 - c) Research, Records, and Library
- Memorial Star:

- a) Star Points are the memorial walls carrying plaques of the fallen; names of State line top of walls.
- b) 55 Flags of States and US Territories fly in the center.
- c) Outside ring wall and path carry the names of Donors to the memorial
- d) Areas in-between the star points are left open for gatherings or future program expansion.





AMERICAN FALLEN WARRIOR MEMORIAL FOUNDATION

Design Concept

The main concept of the memorial is based on the gold service star which represents a fallen soldier. (History: Families display a service flag which is: red border with a white field having a blue star in its center for each member of a family on active duty. This blue star changes to a gold star (with a blue edge) which represents a family member that died during service, without specifying cause of death.

Memorial is partially recessed to create a physical and emotional change in the visitor's orientation. Memorial to focus inward always-keeping visitor connected with the large national flag, state flags, and the Fallen Heroes plaques. Surrounding sounds are quieter and with the sounds of the water at the seating areas and the State flags waving in the air amplified to provide a serene atmosphere.

Large flag archway serves as both a landmark and starting point of entry into the memorial. This structure stands 130' feet tall and will carry on the outside of each tower the seals of Military branches.

Center of memorial contains all 55 flags representing the states and territories of the US. These stand in the middle of pentagon which is the shape of the Department of Defense which houses all branches of the military.

Points of the star are edged with granite walls that will carry the plaques of the Fallen. On top of these walls will be the names of each State and Territory this in turn can be used to organize the placement of the plaques.

Seating areas are created in between the memorial walls to function both as a fountain and seats. The Fountains are low in profile to let the visitor experience both touch and sound of the water flowing over stones.

Secondary access to the memorial is created at the apex of each point of the star which leads to ramps. This provides the visitor different views and vistas to experience the memorial from.

The large circular path that goes around the memorial that links all the other access points is created by the "Donor Wall". This wall will carry the names of all

the people, corporations, and such which contributed support for the building of this memorial.

Two buildings will flank the archway entry on either side one will be used to house an information, auditorium, and exhibit hall. The other will be the foundation administration, outreach, and library center.

Geometry & Elements

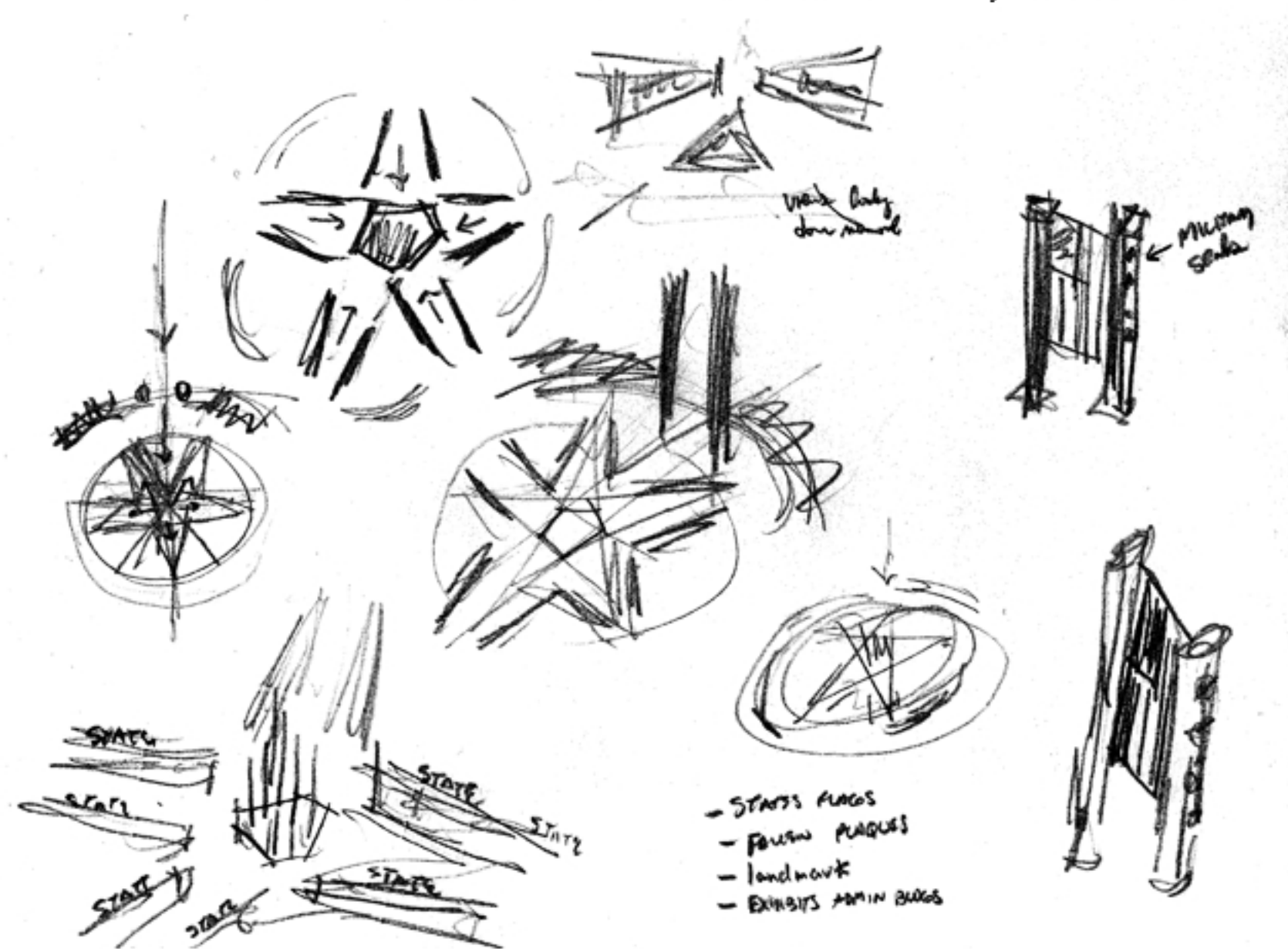
Archway - entry and landmark to memorial, carries the National flag.

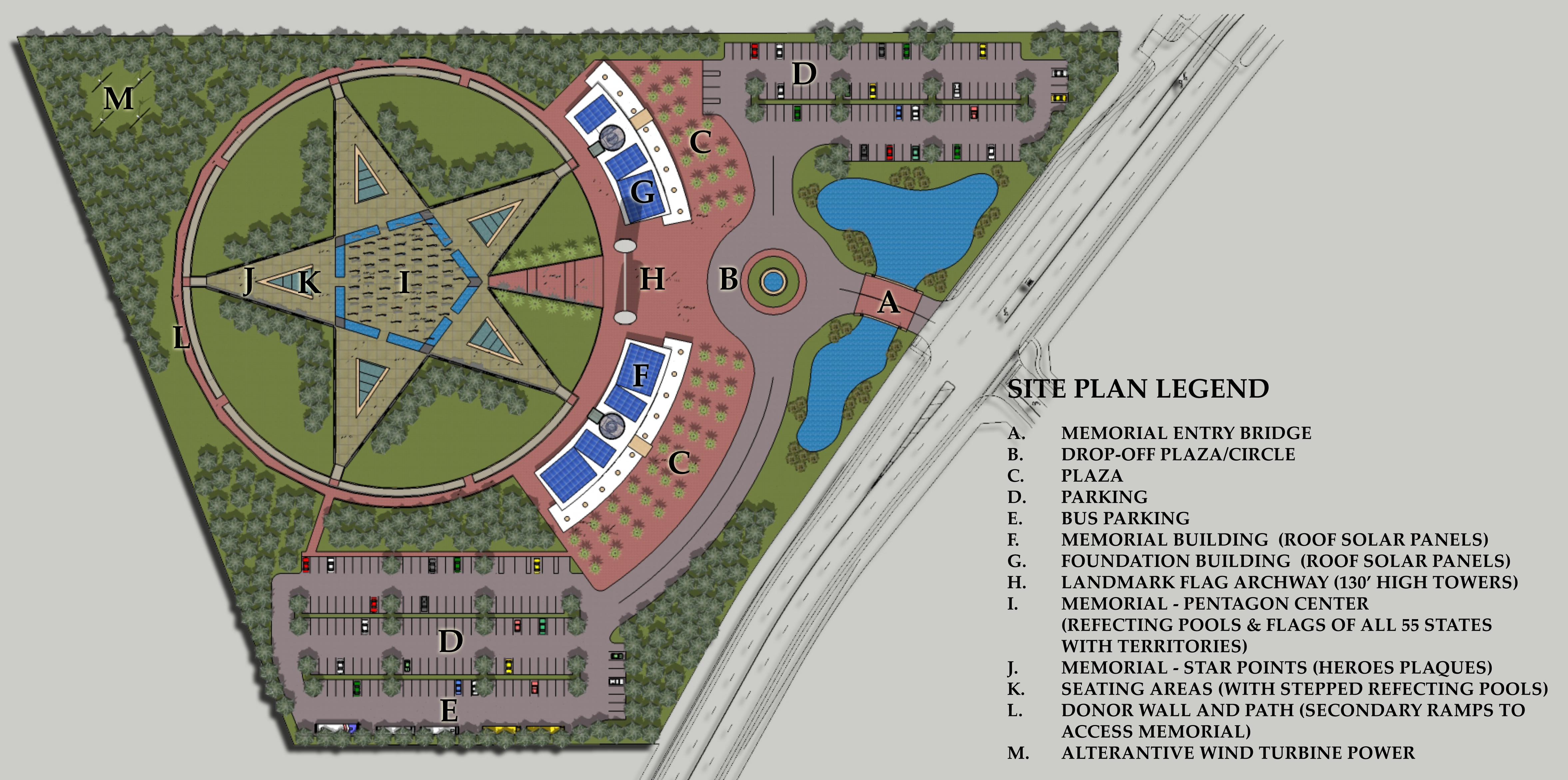
Star - recalls the gold star of a fallen soldier, main organizer/focus of memorial

Points form walls holding the plaques of the fallen.

Pentagon - is the center shape of the star center (holding all 55 state and territory flags).

Circle - surrounds the star, creates donor wall and secondary access to memorial.











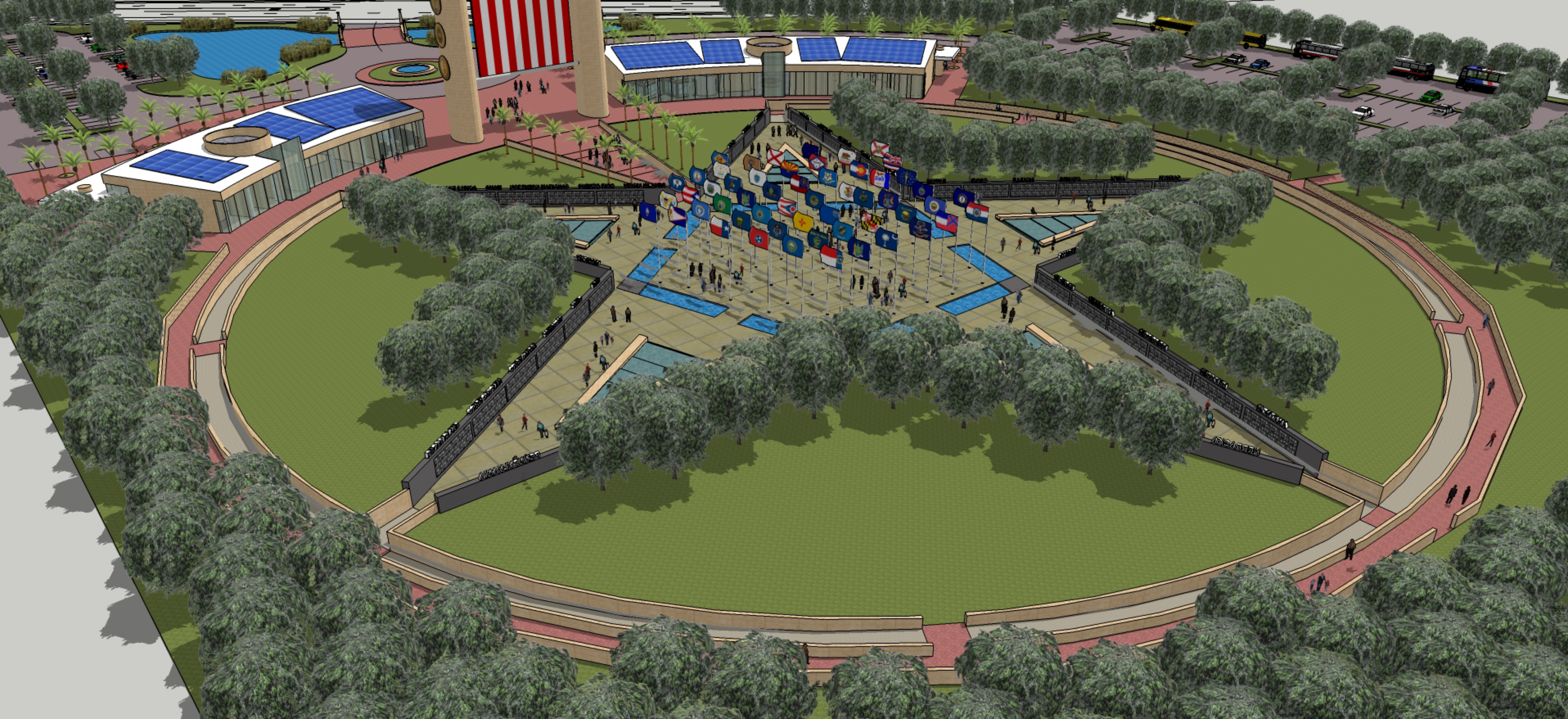






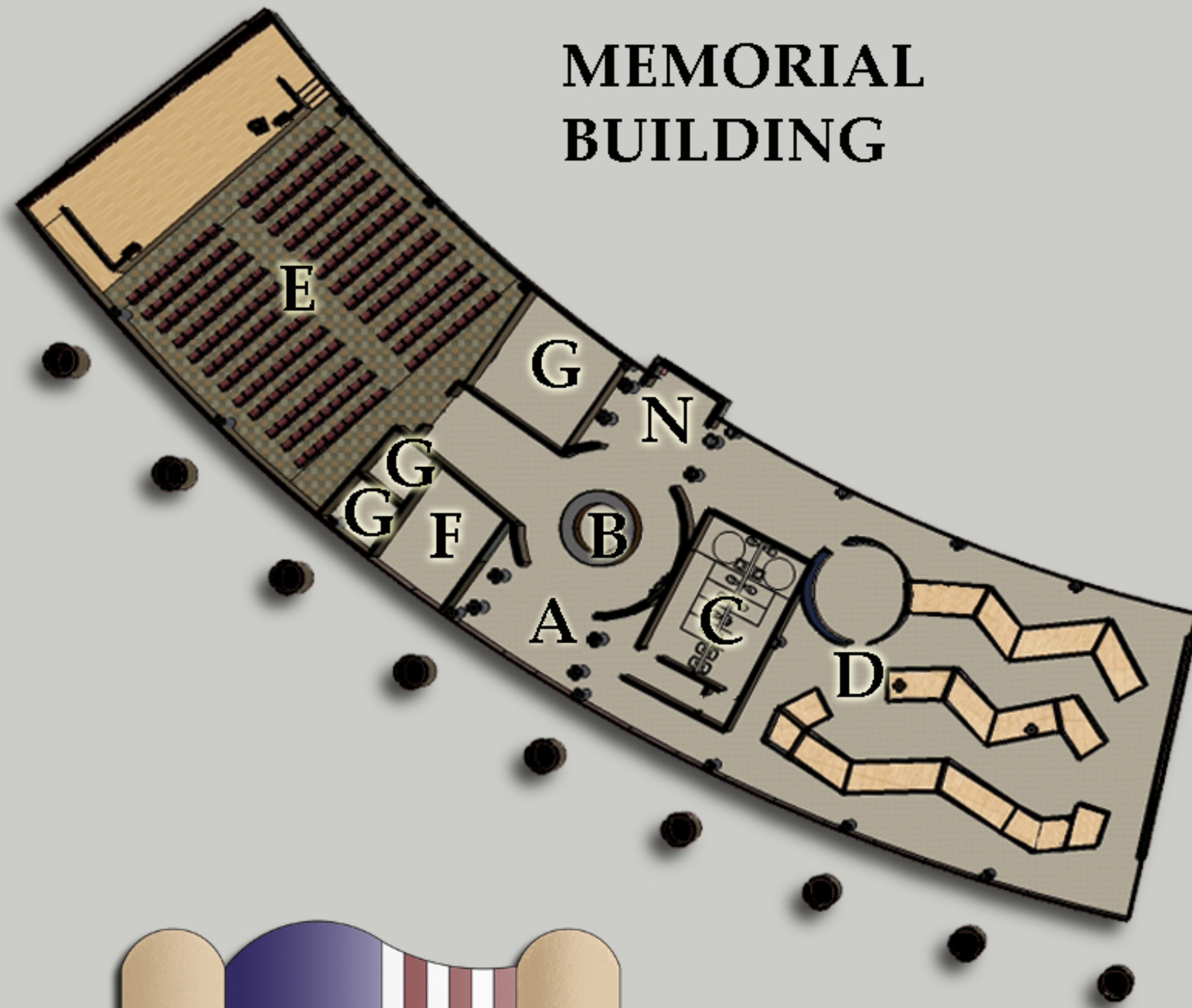




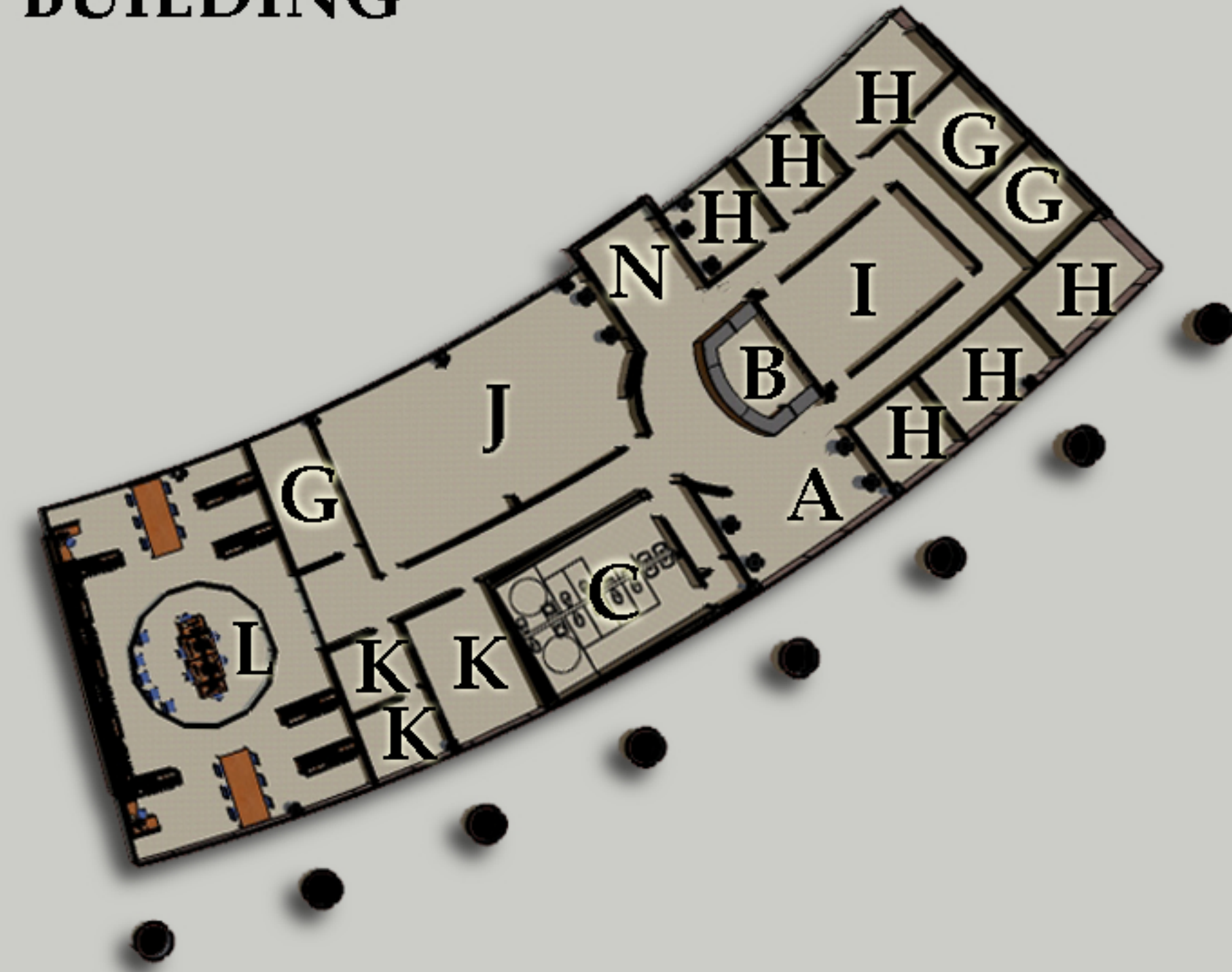




MEMORIAL BUILDING



FOUNDATION BUILDING



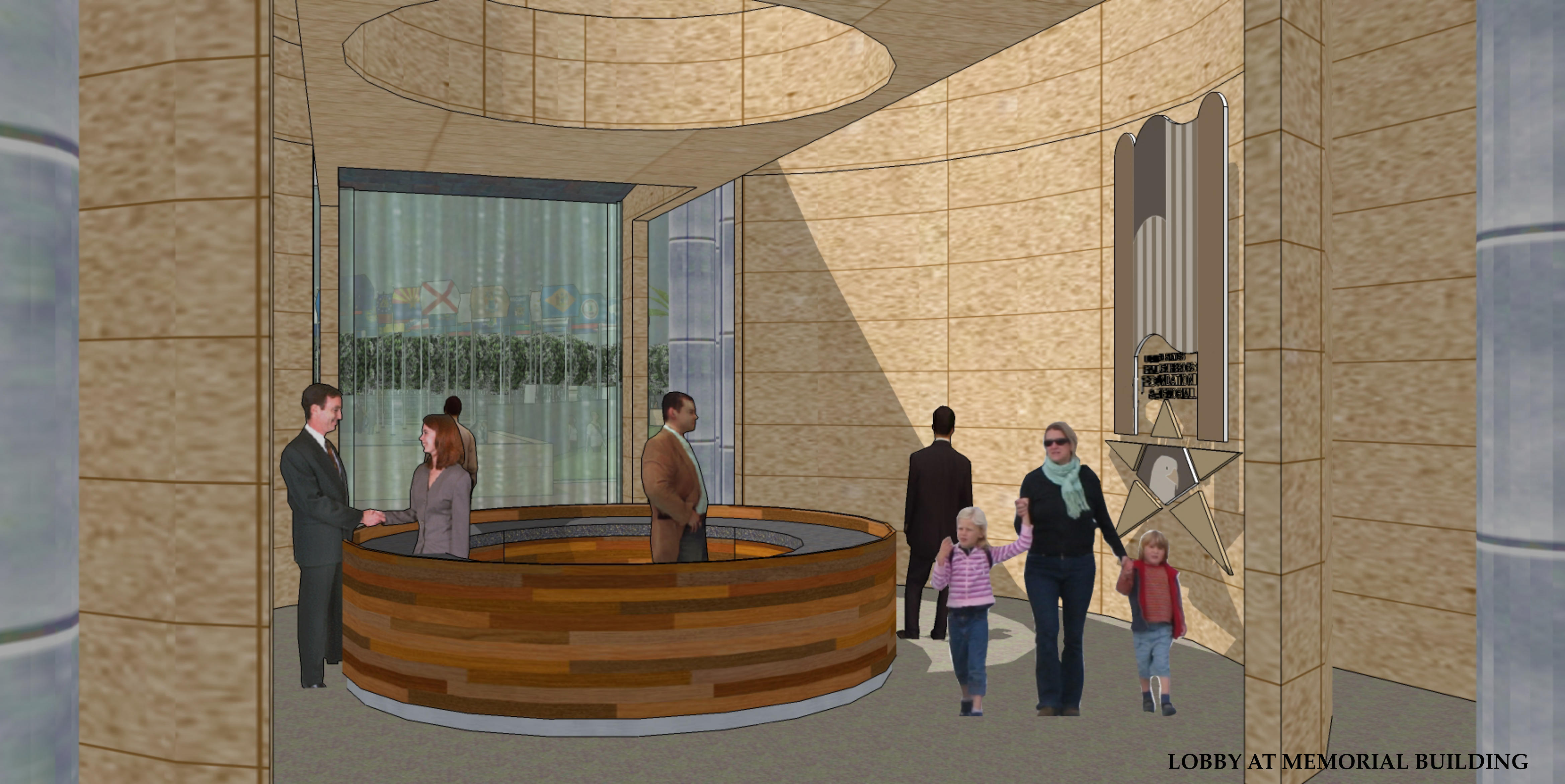
M

FLOOR PLAN LEGEND

- A. LOBBY/ENTRY
- B. RECEPTION/INFORMATION
- C. RESTROOMS
- D. EXHIBIT HALL
- E. AUDITORIUM
- F. GIFT SHOP
- G. BUILDING SUPPORT SPACE

- H. OFFICE
- I. CONFERENCE ROOM
- J. EXPANDABLE LECTURE ROOM
- K. SMALL GROUP ROOMS
- L. LIBRARY & RESEARCH COLLECTION
- M. CENTRAL PLAZA/FLAG ARCHWAY
- N. ACCESS OUT TO MEMORIAL





LOBBY AT MEMORIAL BUILDING

"We few, we happy few, we band of brothers. For he today that sheds
his blood with me, Shall be my brother"

AUDITORIUM AT MEMORIAL BUILDING

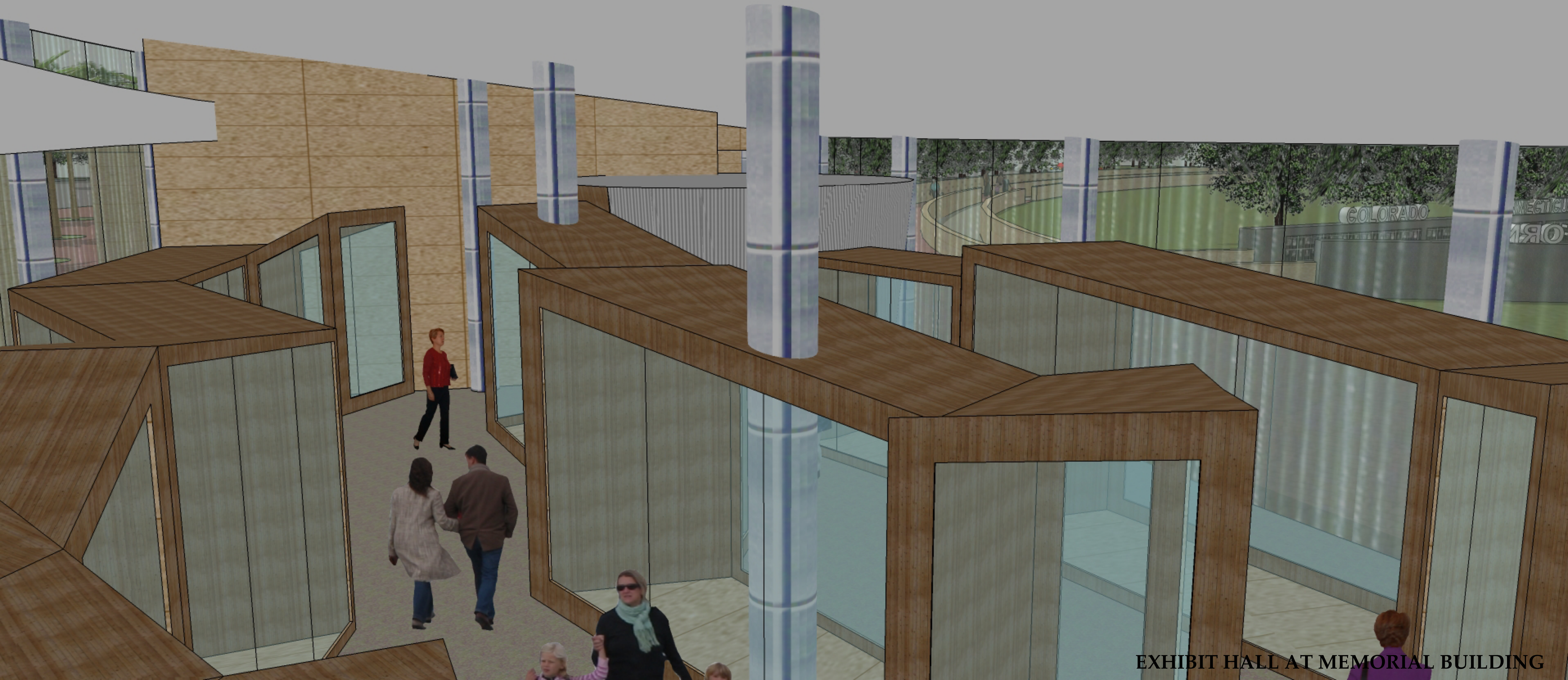


EXHIBIT HALL AT MEMORIAL BUILDING



LOBBY AT FOUNDATION BUILDING



LIBRARY & RESEARCH AT FOUNDATION BUILDING



COLOR



BRONZE

CONCEPT FOR AFWMF LOGO