

PLAN

PROJECT: 2009-10  
 JANUARY 6, 2010  
 RELEASE DATE:

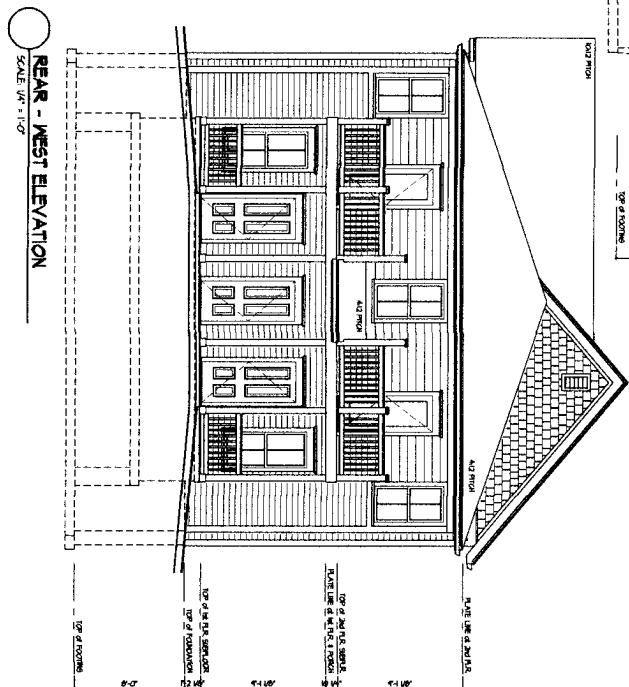
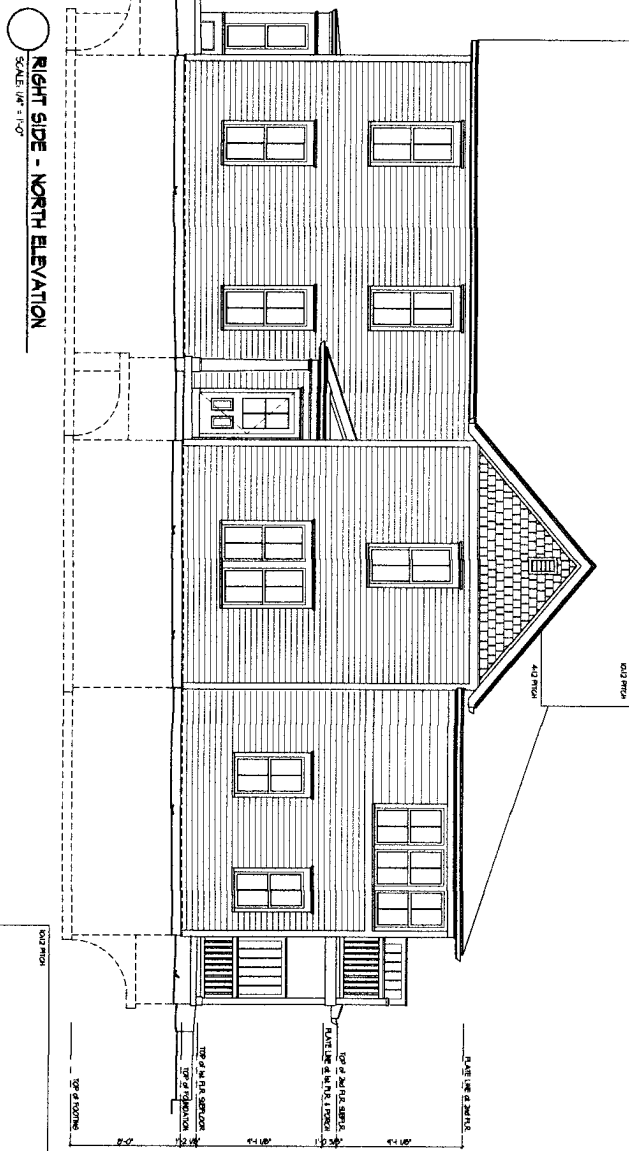
MULTI-FAMILY BUILDING FOR  
**711 CONNECTICUT**  
 LAURENCE, KANSAS

THIS DOCUMENT IS THE PROPERTY OF PAUL WERNER ARCHITECTS. IT IS TO BE USED ONLY FOR THE PROJECT AND SITE SPECIFICALLY IDENTIFIED HEREON. IT IS NOT TO BE REPRODUCED, COPIED, OR TRANSMITTED IN ANY FORM OR BY ANY MEANS, ELECTRONIC OR MECHANICAL, WITHOUT THE WRITTEN PERMISSION OF PAUL WERNER ARCHITECTS, LLC.

200 W. 5th STREET  
 LAWRENCE, KS 66044  
 OFFICE: 785.833.2004  
 FAX: 785.833.2090

**paulwerner**  
 ARCHITECTS





**paulwerner**  
ARCHITECTS

603 N. 4th STREET  
SUITE 202  
LAURENCE, KS 66044  
OFFICE: 781.683.0004  
CELL: 781.683.0004  
FAX: 781.683.0004

THIS DOCUMENT IS THE PROPERTY OF PAUL WERNER ARCHITECTS. IT IS TO BE USED ONLY FOR THE PROJECT AND SITE SPECIFICALLY IDENTIFIED HEREON. IT IS NOT TO BE REPRODUCED, COPIED, OR TRANSMITTED IN ANY FORM OR BY ANY MEANS, ELECTRONIC OR MECHANICAL, INCLUDING PHOTOCOPYING, RECORDING, OR BY ANY INFORMATION STORAGE AND RETRIEVAL SYSTEM, WITHOUT THE WRITTEN PERMISSION OF PAUL WERNER ARCHITECTS.

MULTI-FAMILY BUILDING FOR:  
**711 CONNECTICUT**  
LAURENCE, KANSAS

PROJECT: 1-20-010  
JANUARY 6, 2011  
RELEASE DATE:

ELEVATION 2