

WEST ELEVATION
SCALE: 1/4" = 1'-0"

APRIL 18, 2011
ARCHITECTURAL REVIEW COMMITTEE RESUBMITTAL

DILLON'S - 098
CORNER BUILDING

1740 MASSACHUSETTS ST
LAWRENCE KANSAS.



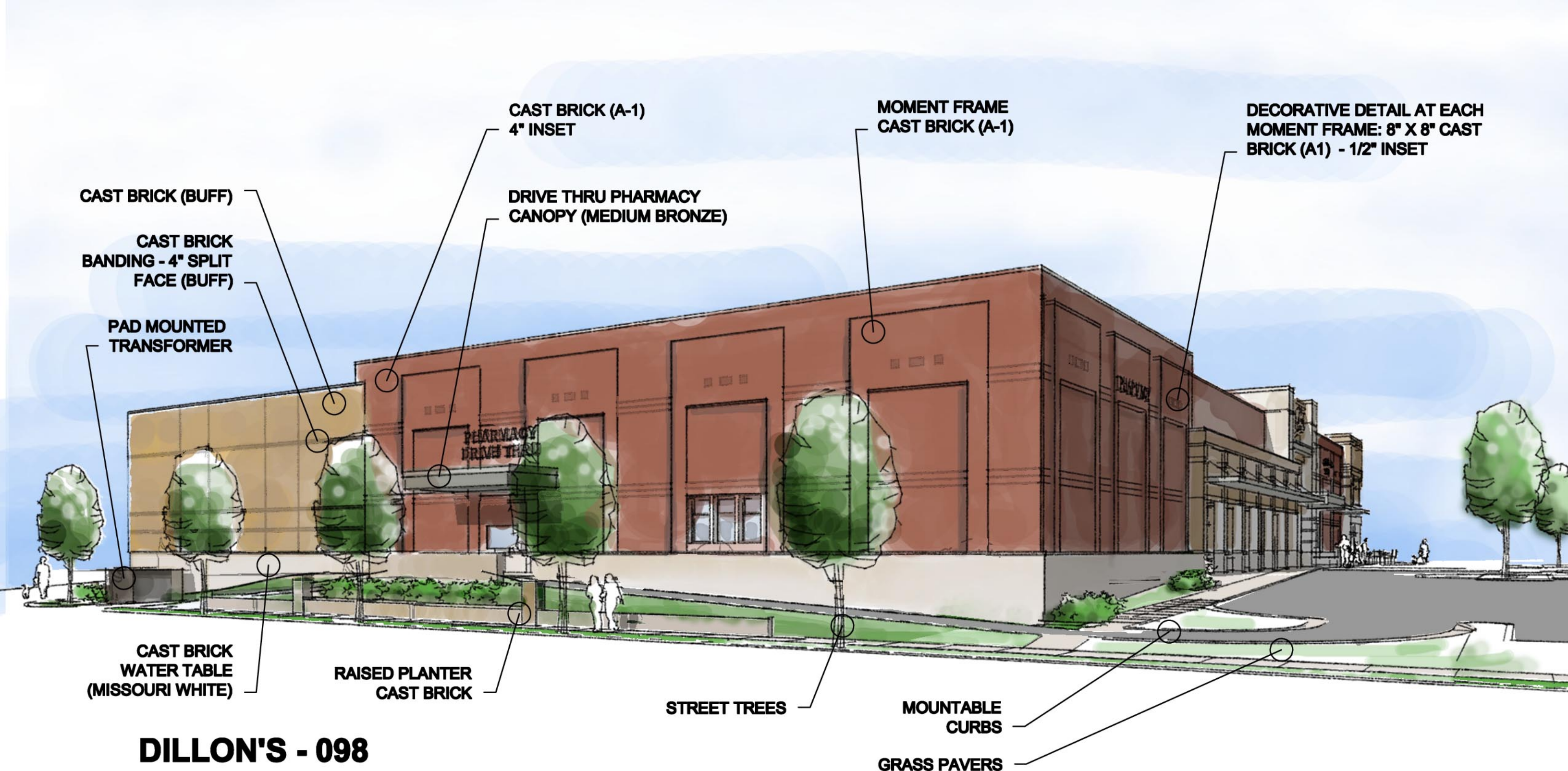
**DILLON'S - 098
CORNER BUILDING**

1740 MASSACHUSETTS ST
LAWRENCE KANSAS

**NORTH ELEVATION
SCALE: 1/4" = 1'-0"**

APRIL 18, 2011

ARCHITECTURAL REVIEW COMMITTEE RESUBMITTAL



DILLON'S - 098
NORTHEAST VIEW

1740 MASSACHUSETTS ST
LAWRENCE KANSAS

MARCH 18, 2011
ARCHITECTURAL REVIEW COMMITTEE RESUBMITTAL

SEE ENLARGED
ELEVATIONS FOR
DECORATIVE BRICK
DETAILING AT CORNICE,
FRIEZE, AND STOREFRONT
OF CORNER BUILDING

TOP OF WALL 32'-4" ABOVE GRADE

TOP OF ADJACENT WALLS WALL 29'-4" ABOVE GRADE

DECORATIVE DETAIL AT EACH
MOMENT FRAME: 8" X 8" CAST
BRICK (A1) - 1/2" INSET

RELOCATED BICYCLE
PARKING, 12 LINEAR FEET

DILLON'S - 098

NORTHWEST VIEW

1740 MASSACHUSETTS ST
LAWRENCE KANSAS

APRIL 18, 2011

ARCHITECTURAL REVIEW COMMITTEE RESUBMITTAL



CAST BRICK
MILLER MATERIAL CO: **BUFF**

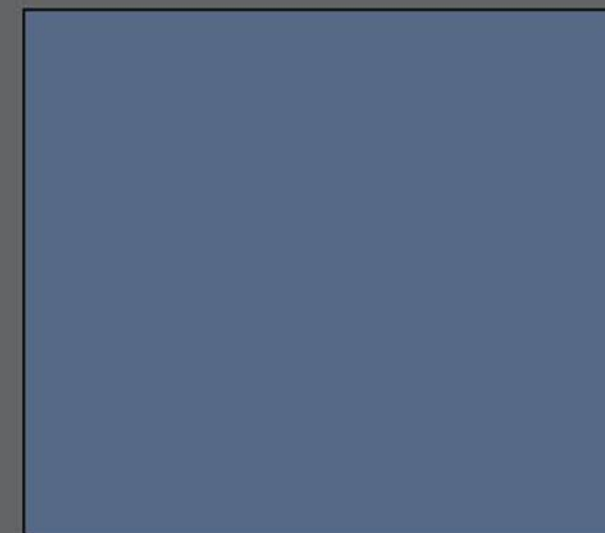


CAST BRICK
MILLER MATERIAL CO: **MISSOURI WHITE**



CAST BRICK
MIDWEST PRODUCTS GROUP, SPEC-BRIK: **A1**

CAST STONE
ARCHITECTURAL CAST STONE, INC.: **WHITE**



PAINTED MASONRY
SHERWIN WILLIAMS: **DENIM B-G/B/138 SW 6523**



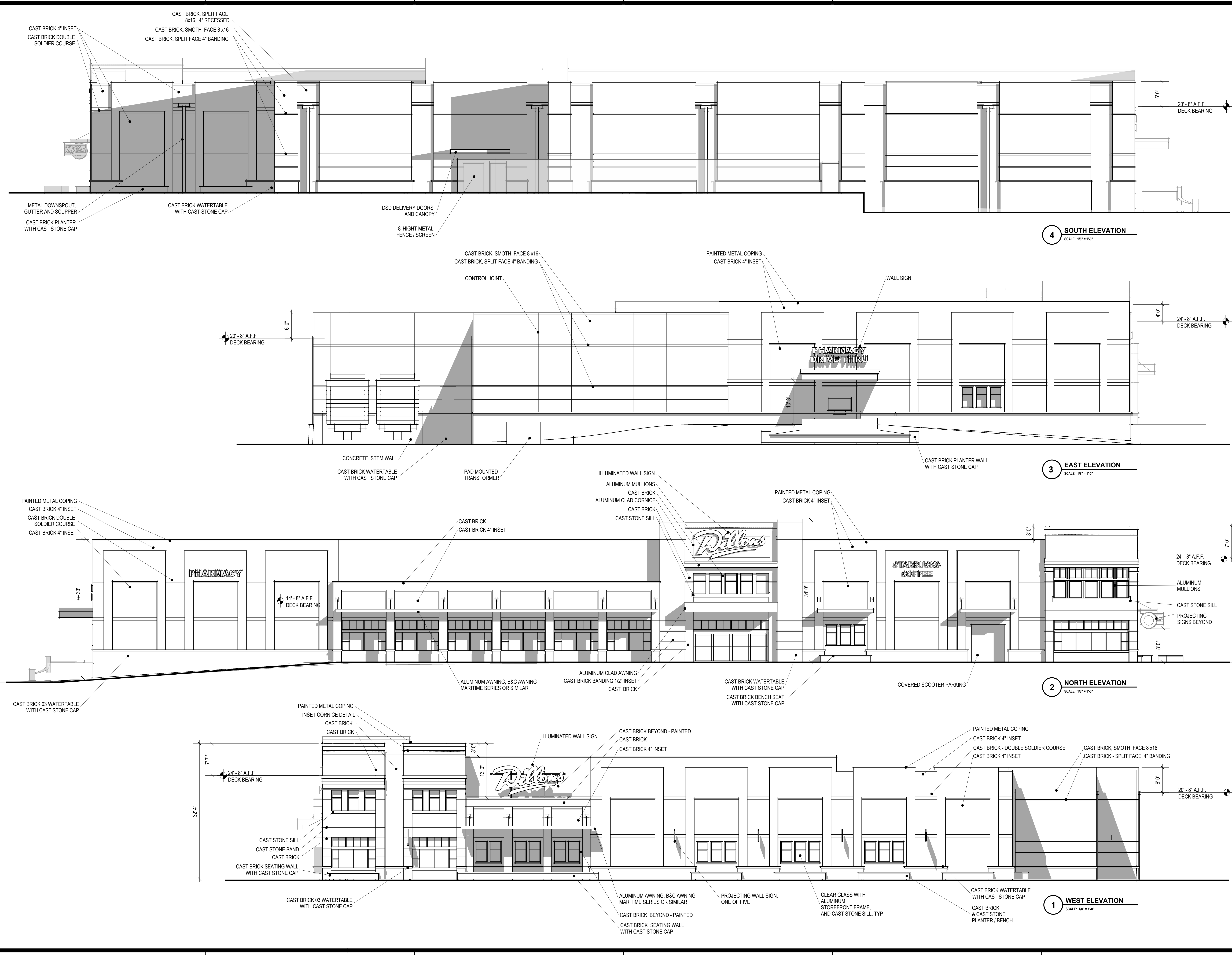
ALUMINUM
SHERWIN WILLIAMS, SHER-NAR: **MEDIUM BRONZE H67NC0058**



DILLON'S - 098

MATERIAL BOARD

11/30/2010 ORIGINAL SUBMISSION TO
HISTORIC RESOURCES COMMITTEE



PROJECT # : 23618
DATE: 3/21/11
DRAWN BY: JBS
DESIGNER: JBS
CHECKED BY: JBS



DILLON'S # 098
ON - SITE RELOCATION
1740 MASSACHUSETTS STREET
LAWRENCE, KS 66044



PRELIMINARY - NOT
FOR CONSTRUCTION

SHEET NUMBER
A2.1

DESCRIPTION:
BUILDING ELEVATIONS