

## **AGENDA – TSC 8/2/10**

ITEM NO. 2: Consider establishing a YIELD sign on Melrose Lane at 25<sup>th</sup> Street.

Facts:

1. At the April 5, 2010 Traffic Safety Commission meeting, the Commission heard a request for a STOP sign on Melrose Lane at 25<sup>th</sup> Street; the Commission voted unanimously to table the item and to look at the possibility of installing a YIELD sign instead.
2. According to Police Department records, there were two (2) reported crashes in 2009 involving southbound vehicles; one (1) that collided with an eastbound vehicle and one (1) that collided with a westbound vehicle.
3. The *Manual on Uniform Traffic Control Devices* provides that YIELD signs may be installed at an intersection where a special problem exists and where engineering judgment indicates the problem to be susceptible to correction by the use of the YIELD sign.

## **MINUTES – TSC 8/2/10**

### **ITEM NO. 2:**

**Consider establishing a YIELD sign on Melrose Lane at 25<sup>th</sup> Street.**

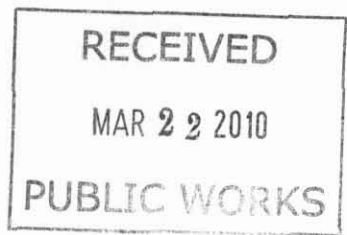
David Woosley presented the information provided in the staff report.

Public comment:

None.

Commissioner Woods asked what kind of traffic volumes there were; Woosley advised that both streets were residential in a multi-family area, however there could be significant volumes on 25<sup>th</sup> Street when there are events at Holcom Park. Commissioner Woods asked if the YIELD sign would go on Melrose; Woosley advised that was correct.

**MOTION BY COMMISSIONER WOODS, SECONDED BY COMMISSIONER ROTHROCK, TO RECOMMEND ESTABLISHING A YIELD SIGN ON MELROSE LANE AT 25<sup>TH</sup> STREET; THE MOTION CARRIED 7-0.**



Traffic Safety Commission  
Attn: David Woosley  
P.O. Box 708  
Lawrence, KS 66044

Dear David and Commission,

I'm sorry I did not make it to the meetings the other times I have proposed items for consideration. Here I go again. I have 2 items to submit for the agenda next month.

We need a stop sign at the corner of 25<sup>th</sup> Terrace and Crestline coming south. The subdivision of 40+ households west on 24<sup>th</sup> Terrace empties out at this intersection and Crestline turns/merges with Melrose here. It is unclear who has the right of way. A stop sign should do the trick.

The second item is a stop sign on Melrose as it intersects 25<sup>th</sup> Street coming south. There is no indication which car has the right of way at that point.

Thanks for your consideration in these matters. Please let me know that we are on the agenda by contacting me at the number or address below.

A handwritten signature in black ink that reads "Bob Garrett".

Bob Garrett  
President Hills West Home Owner's Association  
2511 W. 24<sup>th</sup> Terrace  
Lawrence, KS 66047  
(785.838.4697)

**Section 2B.08 YIELD Sign (R1-2)****Standard:**

- 01 **The YIELD (R1-2) sign (see Figure 2B-1) shall be a downward-pointing equilateral triangle with a wide red border and the legend YIELD in red on a white background.**

**Support:**

- 02 The YIELD sign assigns right-of-way to traffic on certain approaches to an intersection. Vehicles controlled by a YIELD sign need to slow down to a speed that is reasonable for the existing conditions or stop when necessary to avoid interfering with conflicting traffic.

**Section 2B.09 YIELD Sign Applications****Option:**

- 01 YIELD signs may be installed:
- A. On the approaches to a through street or highway where conditions are such that a full stop is not always required.
  - B. At the second crossroad of a divided highway, where the median width at the intersection is 30 feet or greater. In this case, a STOP or YIELD sign may be installed at the entrance to the first roadway of a divided highway, and a YIELD sign may be installed at the entrance to the second roadway.
  - C. For a channelized turn lane that is separated from the adjacent travel lanes by an island, even if the adjacent lanes at the intersection are controlled by a highway traffic control signal or by a STOP sign.
  - D. At an intersection where a special problem exists and where engineering judgment indicates the problem to be susceptible to correction by the use of the YIELD sign.
  - E. Facing the entering roadway for a merge-type movement if engineering judgment indicates that control is needed because acceleration geometry and/or sight distance is not adequate for merging traffic operation.

**Standard:**

- 02 **A YIELD (R1-2) sign shall be used to assign right-of-way at the entrance to a roundabout. YIELD signs at roundabouts shall be used to control the approach roadways and shall not be used to control the circulatory roadway.**
- 03 **Other than for all of the approaches to a roundabout, YIELD signs shall not be placed on all of the approaches to an intersection.**

**Section 2B.10 STOP Sign or YIELD Sign Placement****Standard:**

- 01 **The STOP or YIELD sign shall be installed on the near side of the intersection on the right-hand side of the approach to which it applies. When the STOP or YIELD sign is installed at this required location and the sign visibility is restricted, a Stop Ahead sign (see Section 2C.36) shall be installed in advance of the STOP sign or a Yield Ahead sign (see Section 2C.36) shall be installed in advance of the YIELD sign.**
- 02 **The STOP or YIELD sign shall be located as close as practical to the intersection it regulates, while optimizing its visibility to the road user it is intended to regulate.**
- 03 **STOP signs and YIELD signs shall not be mounted on the same post.**
- 04 **No items other than inventory stickers, sign installation dates, and bar codes shall be affixed to the fronts of STOP or YIELD signs, and the placement of these items shall be in the border of the sign.**
- 05 **No items other than official traffic control signs, inventory stickers, sign installation dates, anti-vandalism stickers, and bar codes shall be mounted on the backs of STOP or YIELD signs.**
- 06 **No items other than retroreflective strips (see Section 2A.21) or official traffic control signs shall be mounted on the fronts or backs of STOP or YIELD signs supports.**

**Guidance:**

- 07 *STOP or YIELD signs should not be placed farther than 50 feet from the edge of the pavement of the intersected roadway (see Drawing F in Figure 2A-3).*
- 08 *A sign that is mounted back-to-back with a STOP or YIELD sign should stay within the edges of the STOP or YIELD sign. If necessary, the size of the STOP or YIELD sign should be increased so that any other sign installed back-to-back with a STOP or YIELD sign remains within the edges of the STOP or YIELD sign.*

**Option:**

- 09 Where drivers proceeding straight ahead must yield to traffic approaching from the opposite direction, such as at a one-lane bridge, a TO ONCOMING TRAFFIC (R1-2aP) plaque may be mounted below the YIELD sign.

1930 & 2021 \*

KU

2030

Clinton Pkwy

Clinton Pkwy

W 23rd St

Iowa St

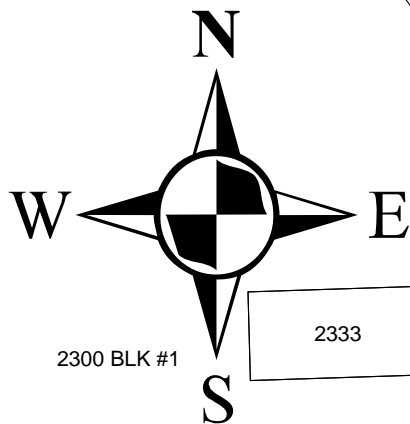
Clinton Pkwy (frontage)

Crestline Dr

Melrose Ln

W 25th St

W 24th St



2300 BLK #1

2333

2415

2125

2309

2301

2319

2300

2330

2327 & 2337

2340

2348 2347 #1-8

2346 1904 #1-13

2329 & 2339

2415

2425

2429

2435

2412

2428-2437 \*

2420

2434

1912

2500-A,B

2540 (& 2520)

2410-30 \*

2434-A-F

2424

2449 \*

2433-49 \*

2201

2201-A  
2201-B  
2201 (COMMON)

2525

2401

2201-C  
2201-D

2201-E

2500-A,B

2540 (& 2520)

COMMON AREA

W 24th Ter

Holcom Park

2600

2601 \*

2523 2521

2503 2501

2525 2515 2511

2505

2527 2517 2513

2507

2611 2609

2605 2603

2613 2607

2615 2601

2617 2619

2619

2619

2619

2619

2619

2619

2619

2619

2619

2619

2619

2619

2619

2619

2619

2619

2619

2619

2619

2619

2619

2619

2619

2619

2619

2619

2619

2619

2619

2619

2619

2619

2619

2619

2619

2619

2619

2619

2619

2619

2619

2619

2619

2619

2619

2619

2619

2619

2619

2619

2619

2619

2619

2619

2619

2619

2619

2619

2619

2619

2619

2619

2619

2619

2619

2619

2619

2619

2619

2619

2619

2619

2619

2619

2619

2619

2619

2619

2619

2619

2619

2619

2619

2619

2619

2619

2619

2619

2619

2619

2619

2619

2619

2619

2619

2619

2619

2619

2619

2619

2619

2619

2619

2619

2619

2619

2619

2619

2619

2619

2619

2619

2619

2619

2619

2619

2619

2619

2619

2619

2619

2619

2619

2619

2619

2619

2619

2619

2619

2619

2619

2619

2619

2619

2619

2619

2619

2619

2619

2619

2619

2619

2619

2619

2619

2619

2619

2619

2619

2619

2619

2619

2619

2619

2619

2619

2619

2619

2619

2619

2619

2619

2619

2619

2619

2619

2619

2619

2619

2619

2619

2619

2619

2619

2619

2619

2619

2619

2619

2619

2619

2619

2619

2619

2619

2619

2619

2619

2619

2619

2619

2619

2619

2619

2619

2619

2619

2619

2619

2619

2619

2619

2619

2619

2619

2619

2619

2619

2619

2619

2619

2619

2619

2619

2619

2619

2619

2619

2619

2619

2619

2619

2619

2619

2619

2619

2619

2619

2619

2619

2619

2619

2619

2619

2619

2619

2619

2619

2619

2619

2619

2619

2619

2619

2619

2619

2619

2619

2619

261