

AGENDA – TSC 11/2/09

ITEM NO. 5: Consider request to establish NO PARKING along both sides of Stone Meadows Drive approximately 120 feet north of Stone Meadows Court.

Facts:

1. Stone Meadows Drive is classified as a local street in a residential area and is paved 26 feet wide.
2. Parking is currently permitted along both sides of the street.
3. There have been no reported crashes along this portion of Stone Meadows Drive during the past three (3) years.

MINUTES – TSC 11/2/09

ITEM NO. 5:

Consider request to establish NO PARKING along both sides of Stone Meadows Drive approximately 120 feet north of Stone Meadows Court.

David Woosley presented the information provided in the staff report.

Public comment:

Scott Flitcraft, 4401 Stone Meadows Court: I'm strongly in favor of installing the NO PARKING; as you approach the intersection southbound, typically there is a truck parked there that causes you to cross the centerline to go around and there is a fence on the other side of the street that blocks your view on oncoming traffic; in addition, when you are exiting Stone Meadows Court and turning right, the fence blocks your view of southbound traffic that may be in your lane; I've had several close calls as well as my wife, my children and other neighbors; many times there are cars parked on both sides of the street which makes it very difficult to get through; the remedy is to install the NO PARKING and alleviate the problems.

Randy Barnes, 4400 Stone Meadows Court: I almost got hit head-on pulling out of Stone Meadows Court going north; I had to drive into the neighbors driveway to avoid an accident; we have a lot of sixteen-year-old kids in our cul-de-sac that are starting to drive and every morning we are very nervous as they leave for school; somebody is going to get plowed.

Jim Cooper, 1115 Stone Meadows Drive: Stone Meadows Drive is paved twenty-six feet wide, the same as all other residential streets in the city; with vehicles parked on one side of the street, the street is wide enough to accommodate two vehicles passing by in opposite directions; the presence of cars parked on a residential street does have a calming effect on traffic; it makes me a more conscious driver and we've noticed that traffic tends to move slower; it's rare that cars are parked on both sides of the street; this complaint seems to single-out one resident in particular; there are at least four other areas in our neighborhood with similar situations without NO PARKING areas; this would deprive us of street parking for family, guests, service workers, delivery vehicles and contractors or vendors; we would have to start parking up the street in front of other neighbors houses; I'm here tonight to oppose this request and I have a letter signed by three other neighbors in opposition (attached).

Jane Dahem, 1119 Stone Meadows Drive: I have been driving in-and-out of there every day for a year and there is no line of sight obstruction from trucks or cars parked on the west side of the street at all; we believe that parking on the street keeps the speed down; we don't want to encourage any more speeding on the street than there already is.

Bizhan Dahem, 1119 Stone Meadows Drive: When the teenagers exit Stone Meadows Court, they don't stop or even look around; the police department has observed the intersection and an officer told me he didn't see any problem.

Commissioner Woods: I don't think 120 feet of NO PARKING is warranted for two houses; it looks to me like a neighborhood dispute; I'm not in favor of any spot NO PARKING areas.

Commissioner Miller: I've tried to be consistent in situations where we've have parking on both sides of the street; I have a concern for emergency vehicles getting through; but I don't think that applies here.

Commissioner Harden: This is a potentially dangerous situation, but all streets and all intersections in the community are potentially sites of accidents; there being no accident record, it's basically an unfulfilled potential. I'm reluctant to do anything until there is a clear consensus from the neighborhood.

Commissioner Rothrock: In this situation, since there is parking on both sides, if you force the parking from the outside of the curve to the inside of the curve, you are going to limit your sight distances more.

MOTION BY COMMISSIONER CRIQUI, SECONDED BY COMMISSIONER HECKLER, TO RECOMMEND DENYING THE REQUEST TO ESTABLISH NO PARKING ALONG BOTH SIDES OF STONE MEADOWS DRIVE APPROXIMATELY 120 FEET NORTH OF STONE MEADOWS COURT; THE MOTION CARRIED 8-0.

David Woosley

From: Flitcraft, Scott J [sflitcra@transunion.com]
Sent: Friday, September 18, 2009 9:34 AM
To: David Woosley
Subject: Request for no parking signs to be installed
Attachments: IMG00254.jpg

Traffic Safety Commission:

My name is Scott Flitcraft, and I live at 4401 Stone Meadows Court. I would like to request your commission to review a traffic safety concern. Let me preface this by saying I tried to resolve this issue by speaking directly with the neighbor in question, but that did not produce a positive outcome. As a result, I'm appealing to your committee for review, assistance, and resolution.

Overview:

The issue we are faced with is a neighbor who has his truck continually parked at the intersection of Stone Meadows and Stone Meadows Court. The positioning of this truck causes two traffic safety issues. First, Southbound Stone Meadows traffic must merge into the on-coming traffic lane to avoid this truck. To further complicate this matter, the truck is positioned just after a curve in the street, and on the east side of the Street is a privacy fence which causes Southbound drivers to blindly proceed into the on-coming traffic lane. Secondly, as you are pulling out of Stone Meadows Court and proceeding North on Stone Meadows, a second traffic safety issue occurs at this same location from on-coming southbound vehicles merging into the Northbound lane. My family and I have had several close calls with accidents at the referenced location, and I also know of other neighbors who have had this same experience.

Resolution:

The installation of no parking signs on both sides of Stone Meadows. In my opinion, the signs should be placed beginning at the intersection of Stone Meadows and Stone Meadows Court, and be in effect to the North for a distance of approximately 30-40 yards.

Conclusion:

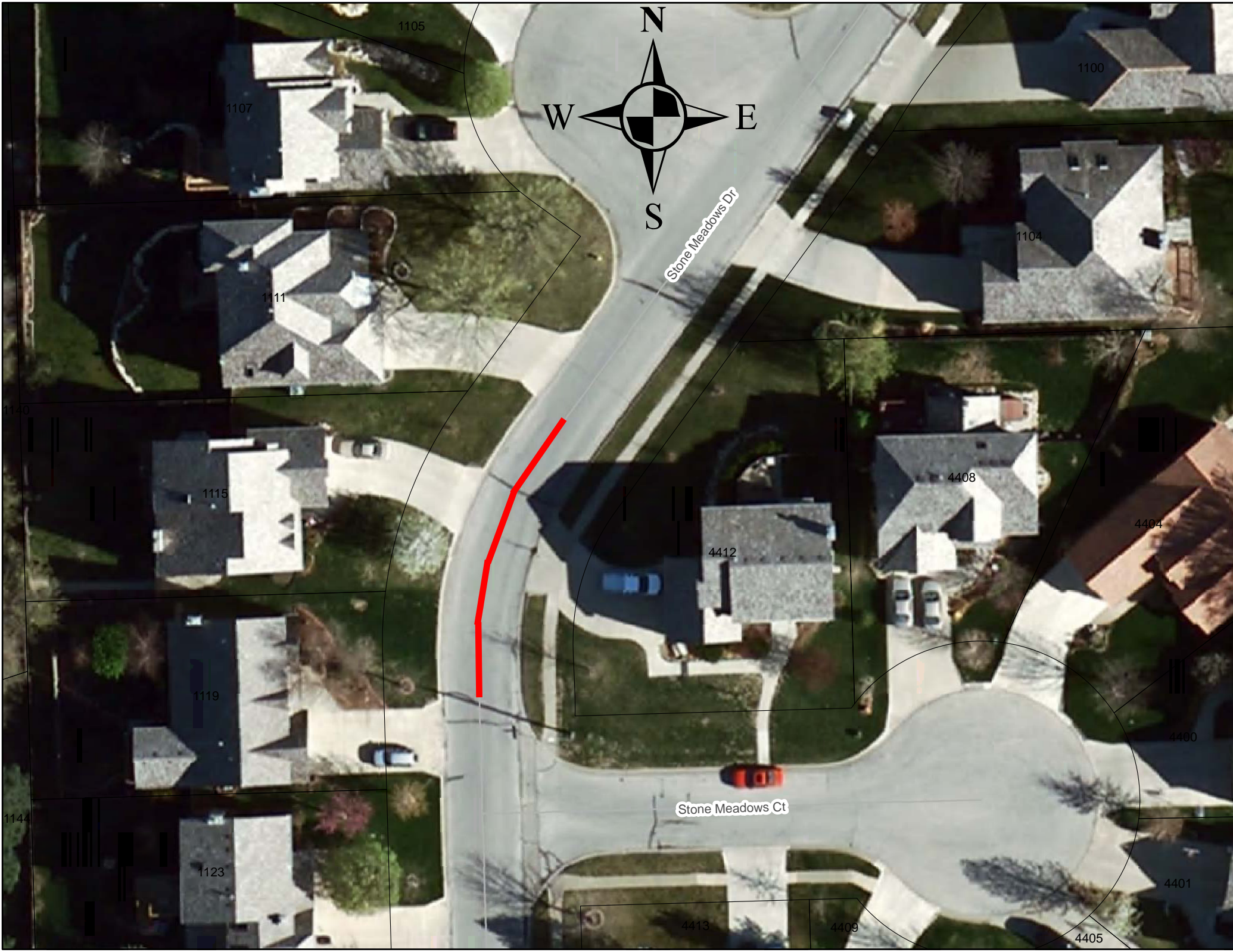
In addition to the risks posed to vehicles and their drivers, many small children frequent this intersection on foot and bike. I believe a simple remedy of installing a few no parking signs could greatly reduce the risk of an injury or worse occurring at this location. I'm willing to proceed with any steps required of me to keep this issue moving forward. Please advise if you need any additional information from me. I have also attached a picture of the vehicle (tan Ford F-150) in question, and intersection location for your reference.

Sincerely,

Scott Flitcraft
4401 Stone Meadows Court
Lawrence, KS 66049
785.865.2527

10/20/2009





Stone Meadows Dr

Stone Meadows Ct

1105

1100

1107

1104

1111

1140

1115

4408

4412

4404

1119

4400

1144

1123

4401

4413

4409

4405