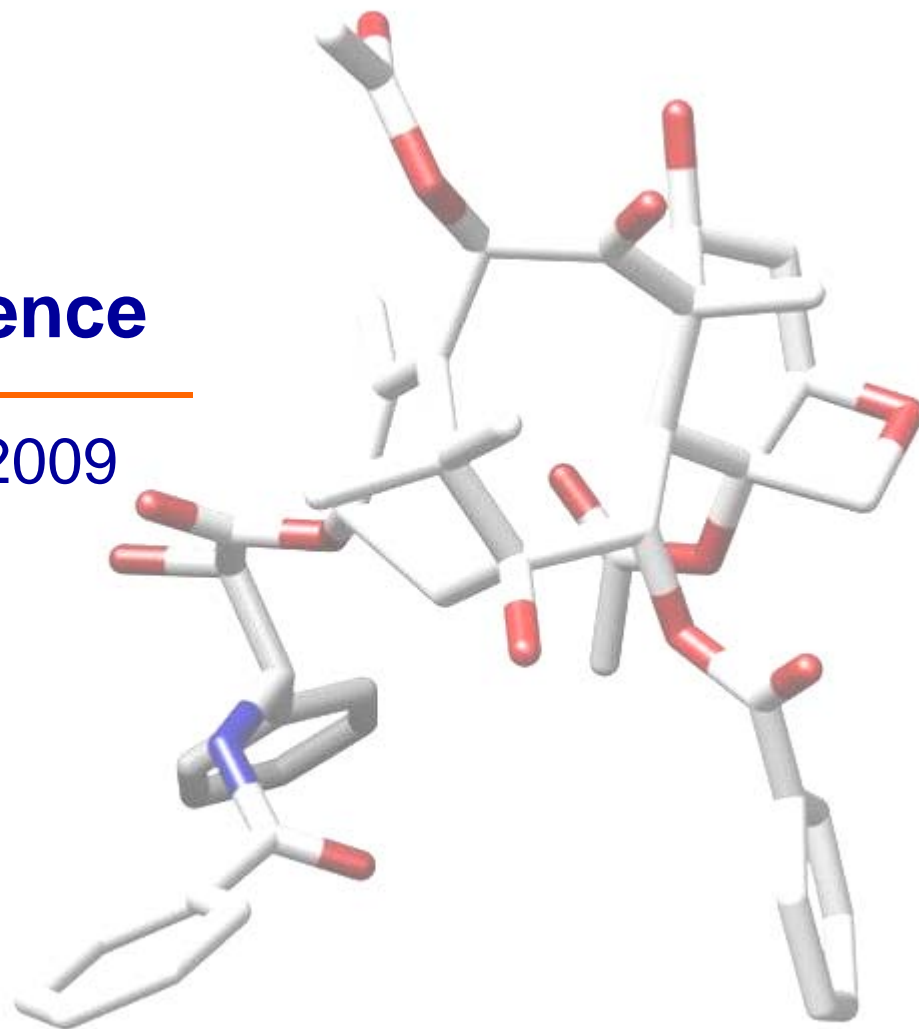




City of Lawrence

November 10, 2009





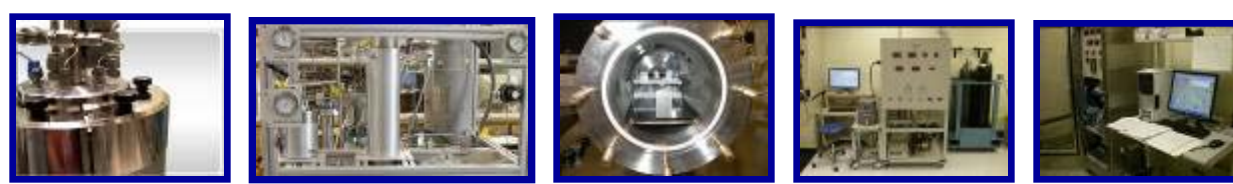
What kind of company is Critech?

- Small company with 14 full or part time people
- The company is located in Lawrence
- Our market is not local but worldwide
- We are a technology based company



What do I mean by a technology based company?

- We have developed several processes using supercritical fluid technology – SCF technology
- We can use this SCF technology to improve existing products like BASF: “*we don’t make the product, we make it better*”
- We are in the business of making pharmaceutical products better.

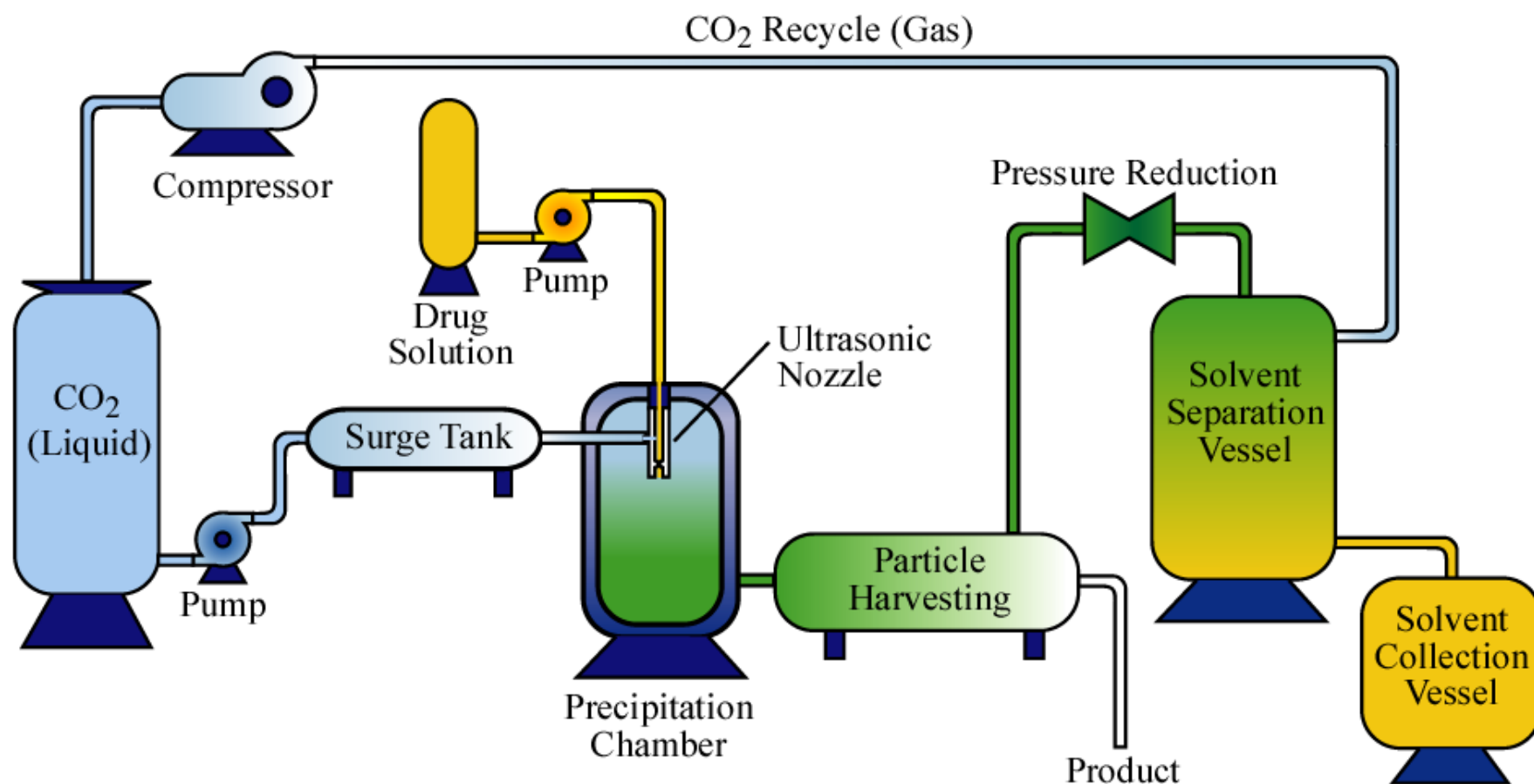


Where did the technology come from?

- Developed originally by Dr. Bala Subramaniam in Chem./Petrol. Engineering Dept. at KU
- Taken to Higuchi Biosciences Center where several scientists began applying it to the pharmaceutical industry



Critech's Crystallization Technology





Research Crystallizer





Phase I Crystallizer





Phase I Crystallizer





Phase II Crystallizer





Phase II Crystallizer

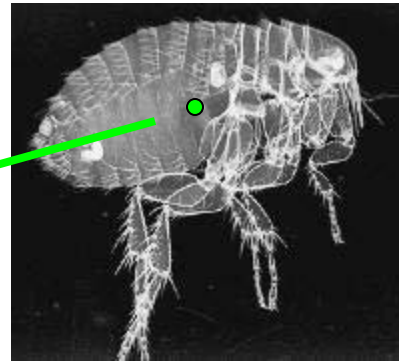




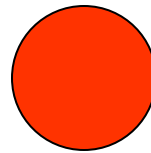
How Small is Small?

Drug
Particle

100 microns



Flea: 3 mm



Red Blood Cell
(7 microns)

Or

Micronized Drug
(5 – 10 microns)



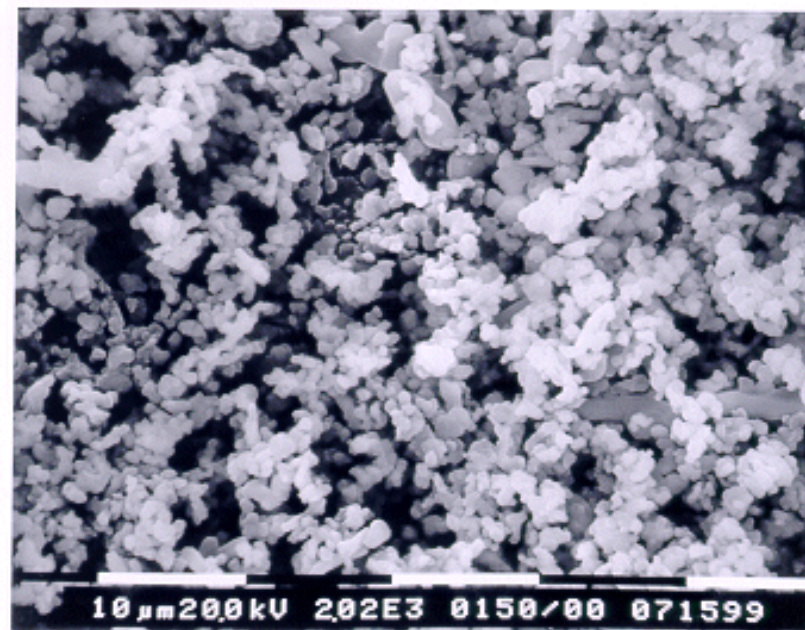
Nanoparticle
(600 nm)



Fine particle drug



Unprocessed



Processed



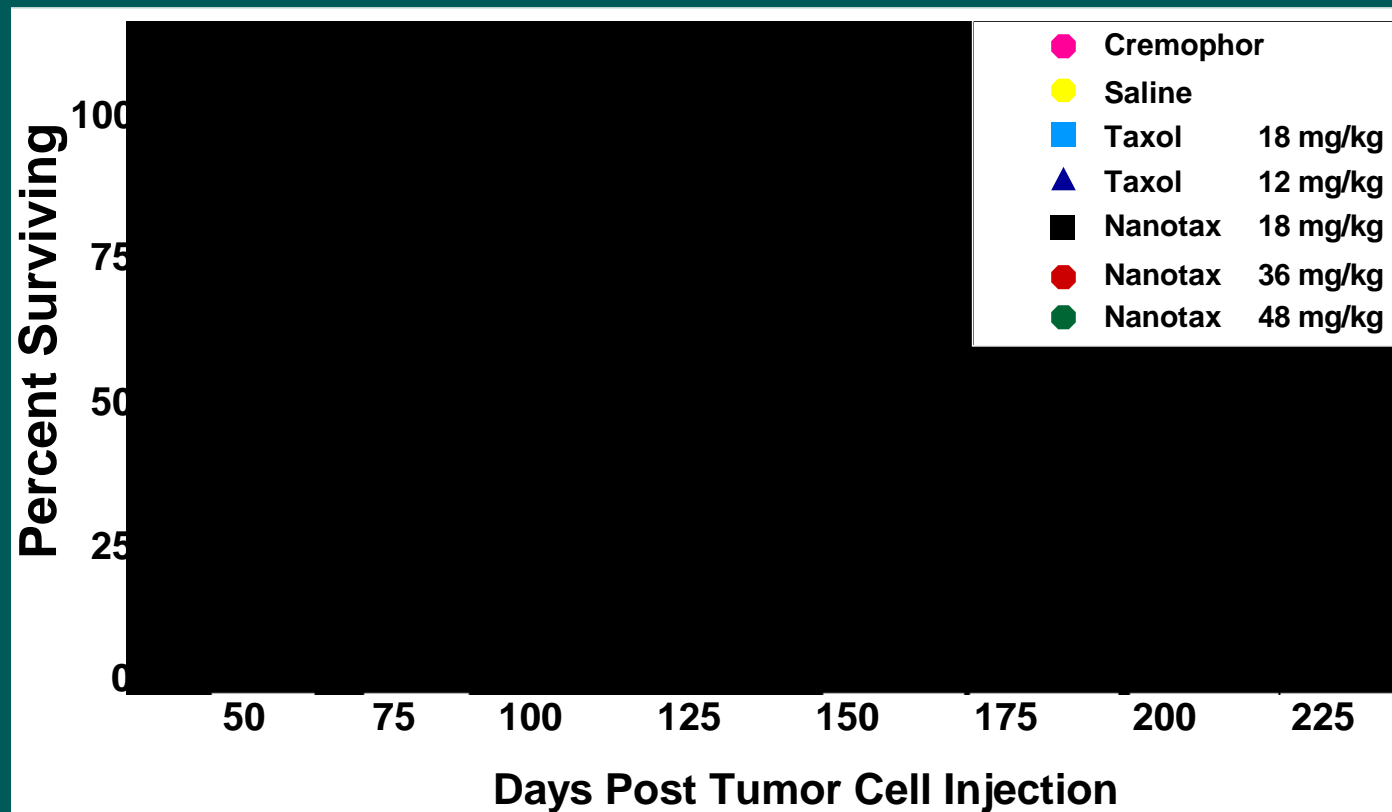
Nanotax[®]

- Our version of the successful oncology drug paclitaxel (marketed by BMS as Taxol[®])
- Extremely low solubility in water
- Taxol[®] formulated with Cremophor EL[®]
 - ethoxylated castor oil plus ethyl alcohol
- Nanotax[®] consists of sub-micron sized particle of paclitaxel suspended in saline



Nanotax[®]

- Nanotax[®] forms a stable suspension in simple saline –
no Cremophor EL[®]!
 - avoids the added toxicity of Cremophor EL[®]
- Nanotax[®] tested in mouse model of ovarian cancer
 - usually diagnosed in late stages
 - about 25,000 new cases each year



**Treatment with Nanotax increased survival duration.
Nanotax exhibited reduced toxicity compared to Taxol.**



Control



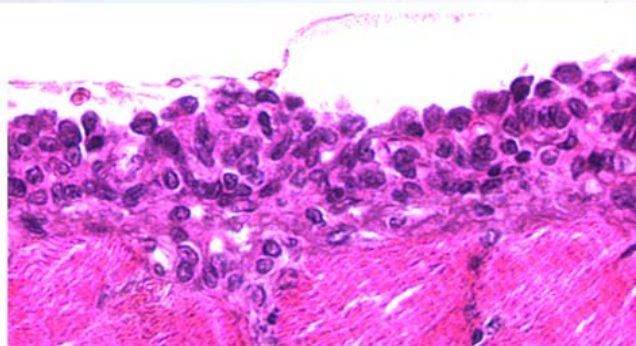
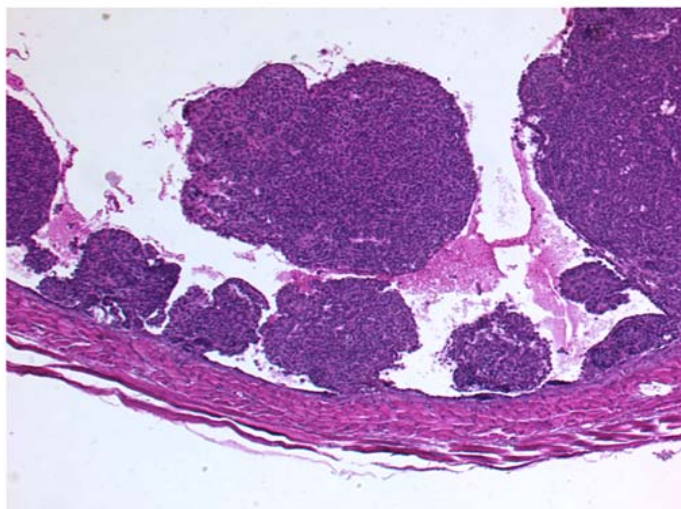
Nanotax®



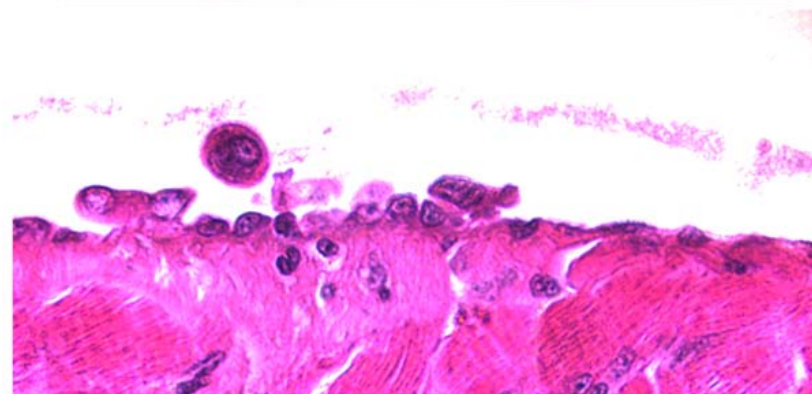
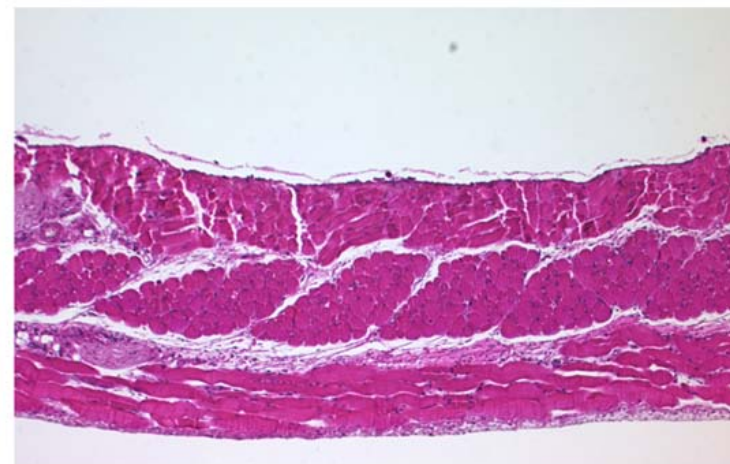
-FDA required study-



Control



Nanotax®



Pre-clinical testing: Nanotax inhibited progression of ovarian cancer in a mouse model; effect was greater than current clinical standard.

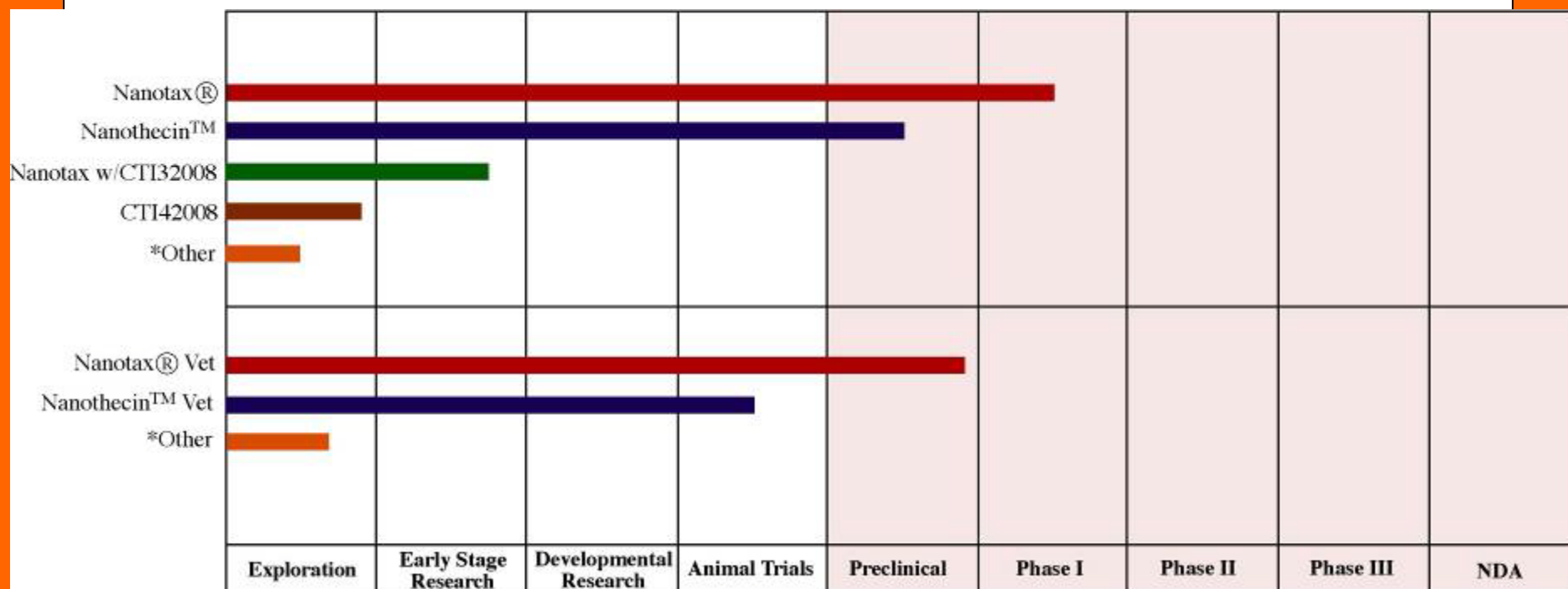


Nanotax® Clinical Trial

- First patient dosed Sept. 9, 2008
- 8 Patients dosed to date
 - Patient response
 - Drug and administration procedure very well tolerated with no observed incidents of drug-related adverse events
 - Pharmacokinetic response
 - Drug level in intraperitoneal fluid significantly higher (about 100-1000 x greater concentration) than systemic blood level
 - Prolonged level observed in intraperitoneal fluid (up to 15 days)



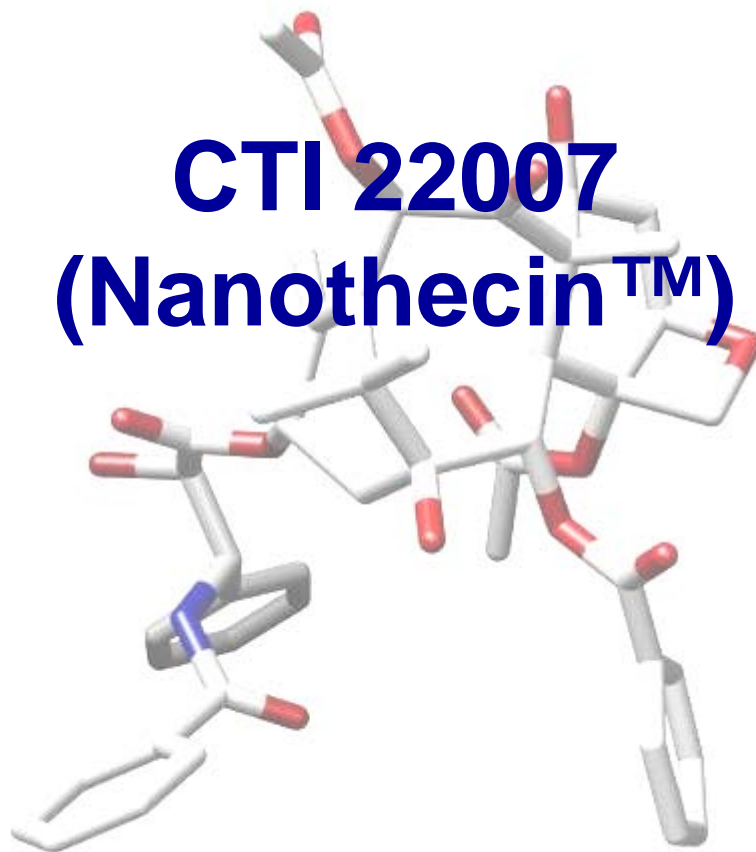
Drugs in Development



*Several other drugs in early exploratory stage as well as consideration for certain antibodies



CTI 22007 (Nanothecin™)



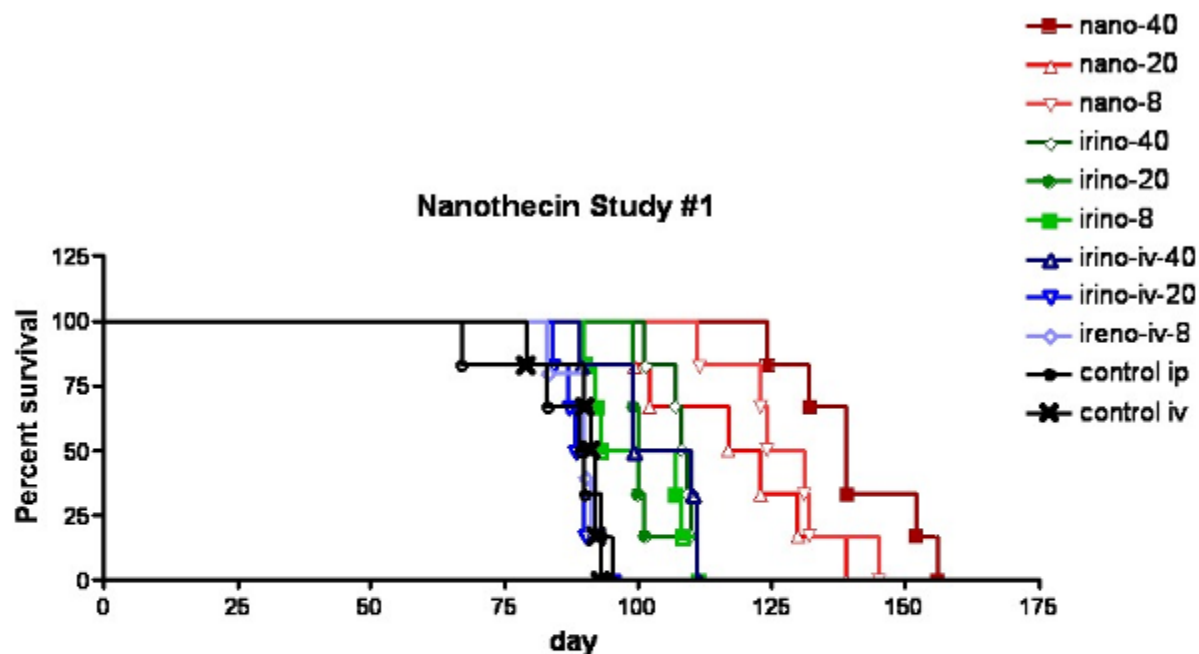


Nanotheclin™ Progress

- Introduced last year
 - oncology drug (different mechanism)
 - fine-particle suspension made
 - test sustained delivery concept
- Named – Nanotheclin™
 - Highly effective in at least two cancer types
- First meeting scheduled with FDA for Nanotheclin™ in January 2010



Nanothecin™ vs Ovarian Cancer

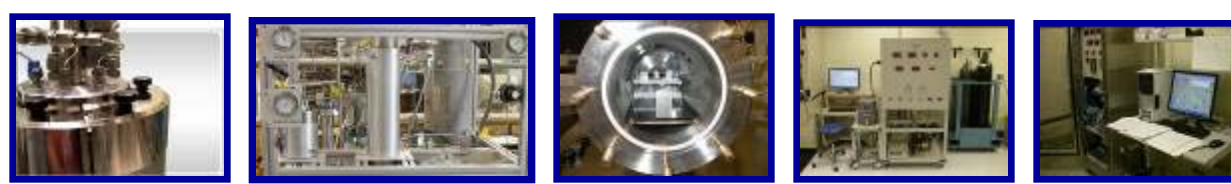


	nano-40	nano-20	nano-8	irino-40	irino-20	irino-8	irino-iv-40	irino-iv-20	irino-iv-8	control ip	control iv
Number of rows	65	65	65	65	65	65	65	65	65	65	65
# of blank lines	59	59	59	59	59	59	59	59	59	59	59
# rows with impossible	0	0	0	0	0	0	0	0	0	0	0
# censored subjects	0	0	0	0	0	0	0	0	0	0	0
# deaths/events	6	6	6	6	6	6	6	6	5	6	6
Median survival	139	120	128	109	100	100	104.5	89	90	89.5	91.5



Legend:

- control 1
- control 2
- Irino 20 D
- Irino 100 W
- Irino 150 W
- 22007 8D
- 22007 20 D
- 22007 40 W
- 22007 100 W
- 22007 150 W



What are the benefits?

- Healthcare benefits
 - Possible better clinical outcome for patients with cancers of the peritoneum
 - Help KUMC achieve NCI Comprehensive Cancer Center designation
 - better treatment options for Kansans
 - better cancer research environment for KU
 - Improvements to drug delivery, manufacturing and handling



What are the benefits?

- Regional economic development benefits
 - Job creation
 - Highly skilled and support staff
 - Expansion of Life Sciences Corridor
 - Potential Commercial Manufacturing



Summary

- Critech has an ovarian cancer clinical trial at the KU Cancer Center at the Kansas University Medical Center and a second clinical trial site in Wichita available at no cost to the patient
- Critech has a second drug focused on colorectal cancer that goes before the FDA in January
- Critech has strong regional investor support demonstrated by a recent offering this quarter that was sold out in 3 days
- Critech's production capacity will increase 10 times with the introduction of its new patented GMP manufacturing unit
- Critech would like to expand its drug manufacturing under this proposed lease