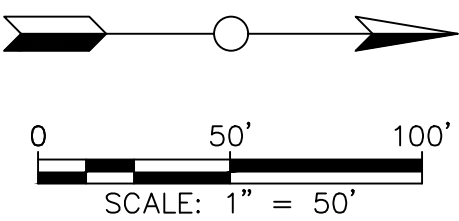
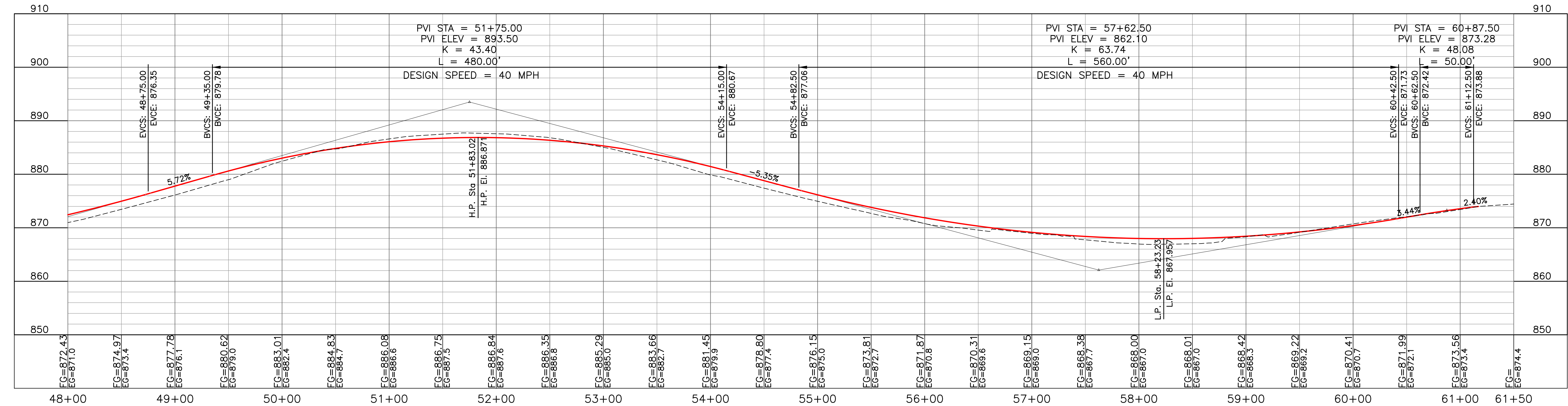
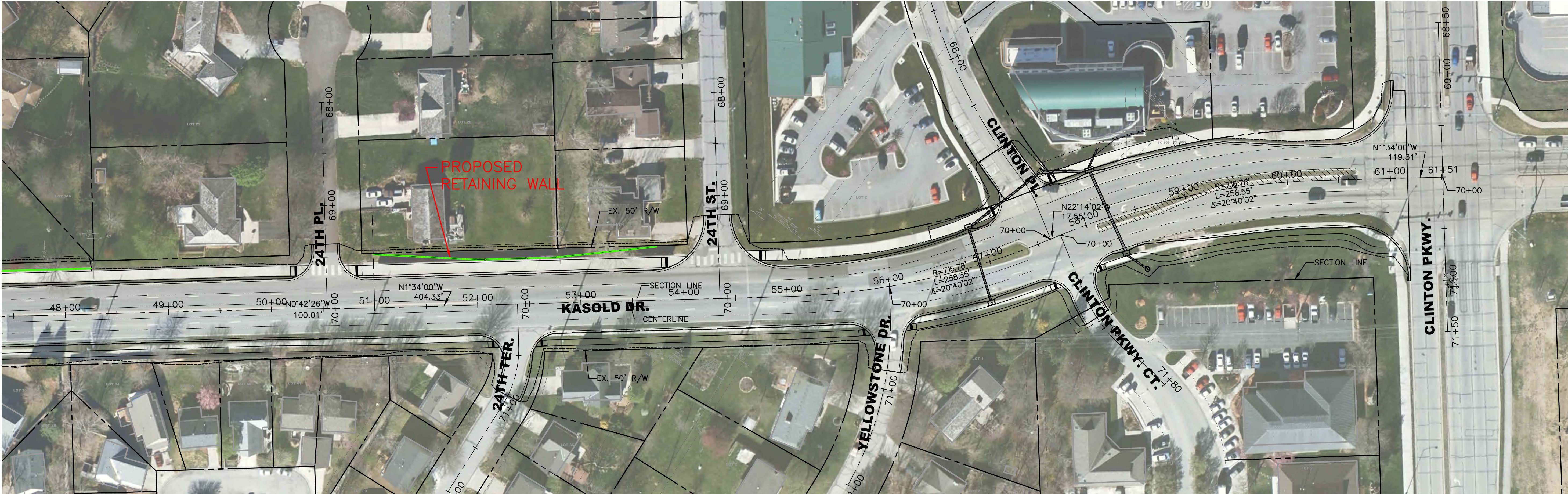


STATE	PROJECT NO.	YEAR	SHEET NO.	TOTAL SHEETS
KANSAS	023-U-2231-01	2009	----	70



NO.	DATE	REVISION	BY	APP'D

KASOLD DRIVE
PLAN & PROFILE
KASOLD DRIVE, 31ST STREET TO CLINTON PARKWAY
STREET & STORM SEWER IMPROVEMENTS

BARTLETT & WEST
628 VERMONT - LAWRENCE KS 66044
PH. 785.749.9452 - FAX 785.749.9961
WWW.BARTWEST.COM

DATE: **SEPT 2009**
W.O.: **16671.001**
OF **70**