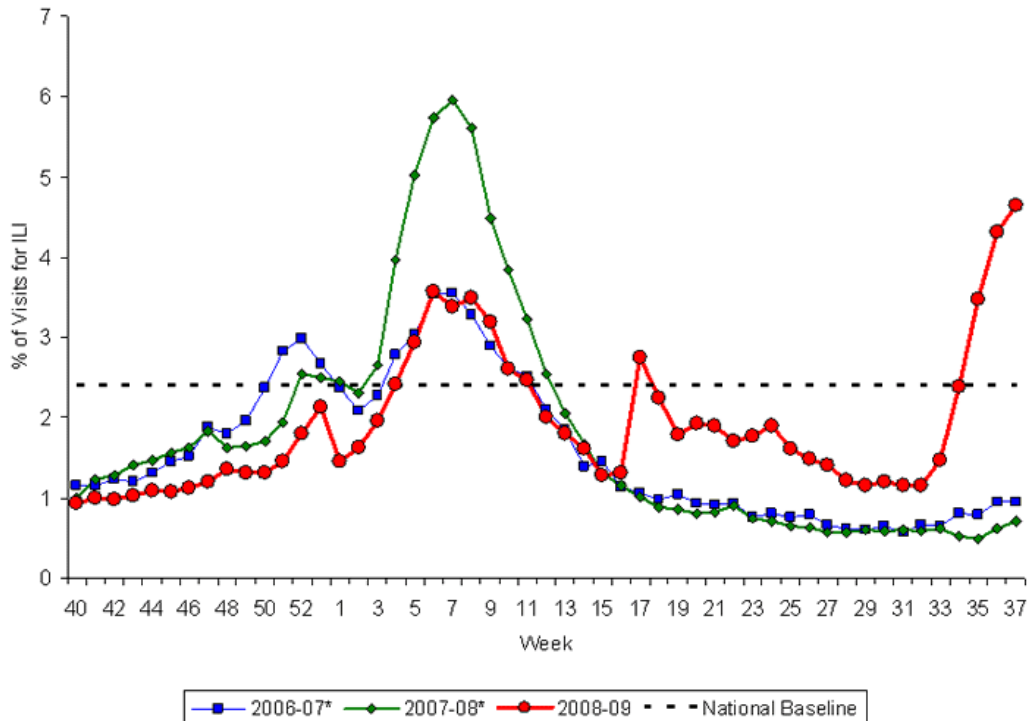


LAWRENCE CITY COMMISSION BRIEFING: H1N1 Influenza

October 6, 2009

H1N1 Influenza Disease Trends

- 1) Community disease incidence rates are sporadic
- 2) A few cases of ILI in Douglas County are requiring hospitalization but no deaths to date



*There was no week 53 during the 2006-07 and 2007-08 seasons, therefore the week 53 data point for those seasons is an average of weeks 52 and 1.

Community Mitigation Goals:

- 1) Reduce the peak burden of disease on social structure
- 2) Decrease the number and severity of cases

Mitigation Strategies

- 1) Stress proper hand and cough hygiene
- 2) Education on disease recognition and social distancing (e.g. voluntary/mandatory isolation) for the following groups; school systems, businesses and the general public.

Vaccination Planning

- 1) Our first shipment is expected early to mid-October (first order placed September 30th)
- 2) Plan is to provide multiple points of distribution (currently 17 private providers)
- 3) Community clinics have been scheduled at Haskell University and the Fairgrounds
- 4) We will be assisting the University of Kansas in weekly flu clinics on campus
- 5) School based clinics scheduled for Lawrence, Eudora and Baldwin
- 6) Staffing assistance still needed.

Public Health response in addition to vaccine planning

- 1) Disease surveillance and monitoring of school absenteeism
- 2) Federal support estimated at \$504,950 is being made available to support this effort.
- 3) Community clinics will disrupt normal business operations negatively impacting grant and fee revenues.