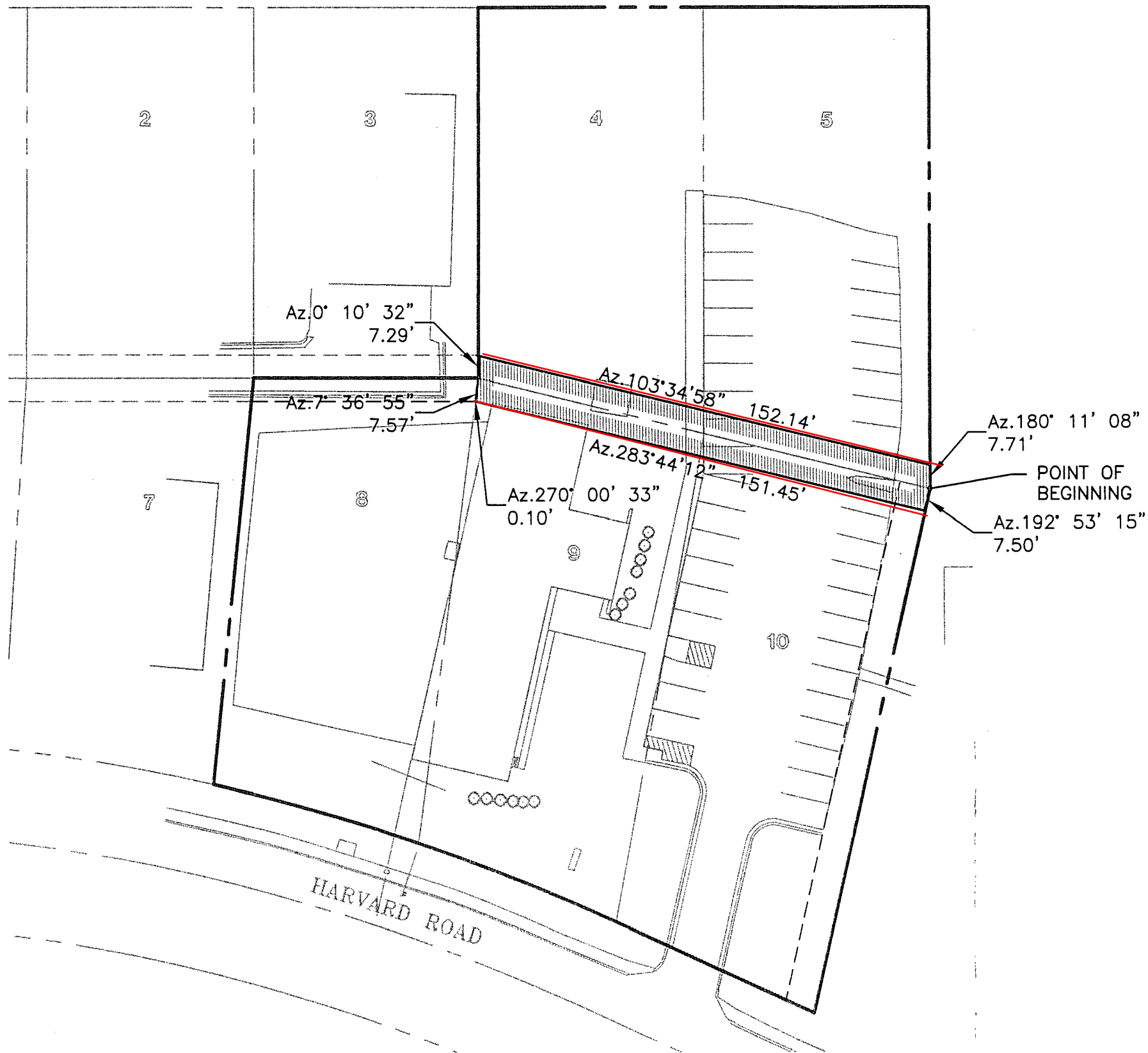


YALE ROAD

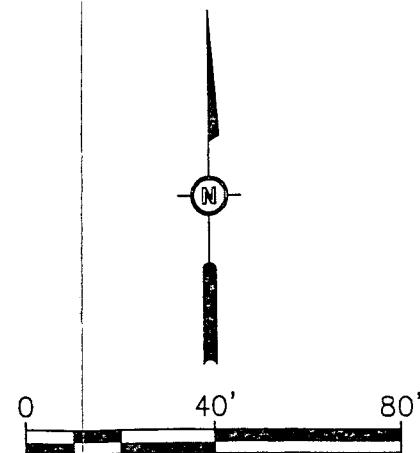


LEGAL DESCRIPTION:

A TRACT OF LAND IN WESTDALE ADDITION NO. 4, AN ADDITION TO THE CITY OF LAWRENCE, DOUGLAS COUNTY, KANSAS, DESCRIBED AS FOLLOWS:

BEGINNING AT THE SOUTHEAST CORNER OF LOT 5 OF SAID ADDITION, THENCE ON AN AZIMUTH OF 192 DEGREES 53 MINUTES 15 SECONDS COINCIDENT WITH THE EAST LINE OF LOT 10 OF SAID ADDITION, A DISTANCE OF 7.50 FEET; THENCE ON AN AZIMUTH OF 283 DEGREES 44 SECONDS 12 SECONDS, A DISTANCE OF 151.45 FEET; THENCE ON AN AZIMUTH OF 270 DEGREES 00 MINUTES 33 SECONDS, A DISTANCE OF 0.10 FEET TO A POINT ON THE WEST LINE OF LOT 9 OF SAID ADDITION; THENCE ON AN AZIMUTH OF 07 DEGREES 36 MINUTES 55 SECONDS COINCIDENT WITH THE WEST LINE OF SAID LOT 9, A DISTANCE OF 7.57 FEET TO THE NORTHWEST CORNER OF SAID LOT 9, THENCE ON AN AZIMUTH OF 00 DEGREES 10 MINUTES 32 SECONDS COINCIDENT WITH THE WEST LINE OF LOT 4 OF SAID ADDITION, A DISTANCE OF 7.29 FEET; THENCE ON AN AZIMUTH OF 103 DEGREES 34 MINUTES 58 SECONDS, A DISTANCE OF 152.14 FEET TO A POINT ON THE EAST LINE OF LOT 5 OF SAID ADDITION; THENCE ON AN AZIMUTH OF 180 DEGREES 11 MINUTES 08 SECONDS COINCIDENT WITH THE EAST LINE OF SAID LOT 5, A DISTANCE OF 7.71 FEET TO THE POINT OF BEGINNING.

SAID TRACT CONTAINING 2,249 SQUARE FEET MORE OR LESS.



EASEMENT VACATION

WESTDALE ADDITION NO.4

CITY OF LAWRENCE, DOUGLAS COUNTY, KANSAS

DESIGNED BY:

DRAWN BY:

APPROVED BY:

PROJ NO:

SCALE:

DATE:

SHEET NUMBER

BARTLETT & WILSON  
1200 SW EXECUTIVE DRIVE  
TOPEKA, KANSAS 66611  
PHONE 785-272-2252