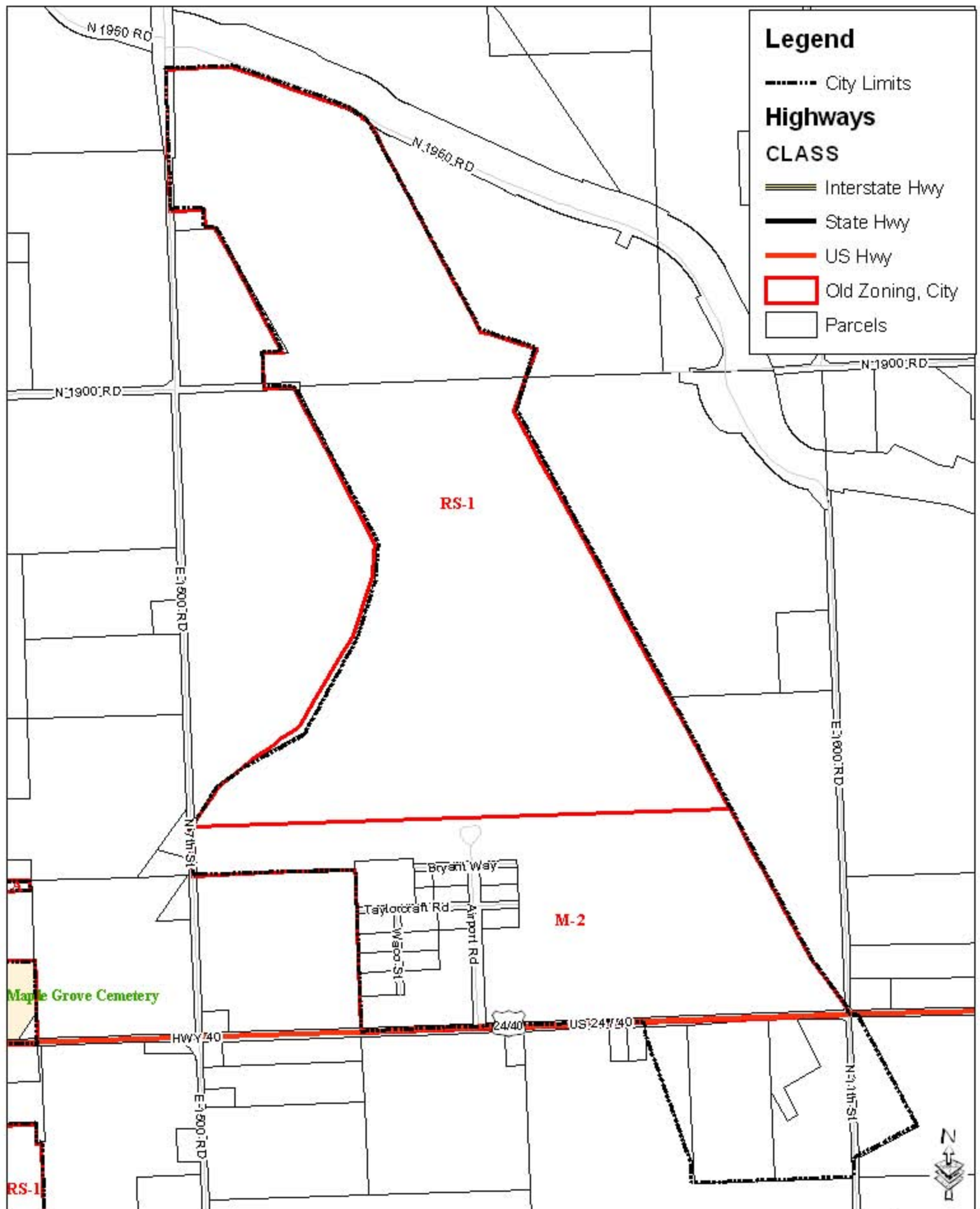
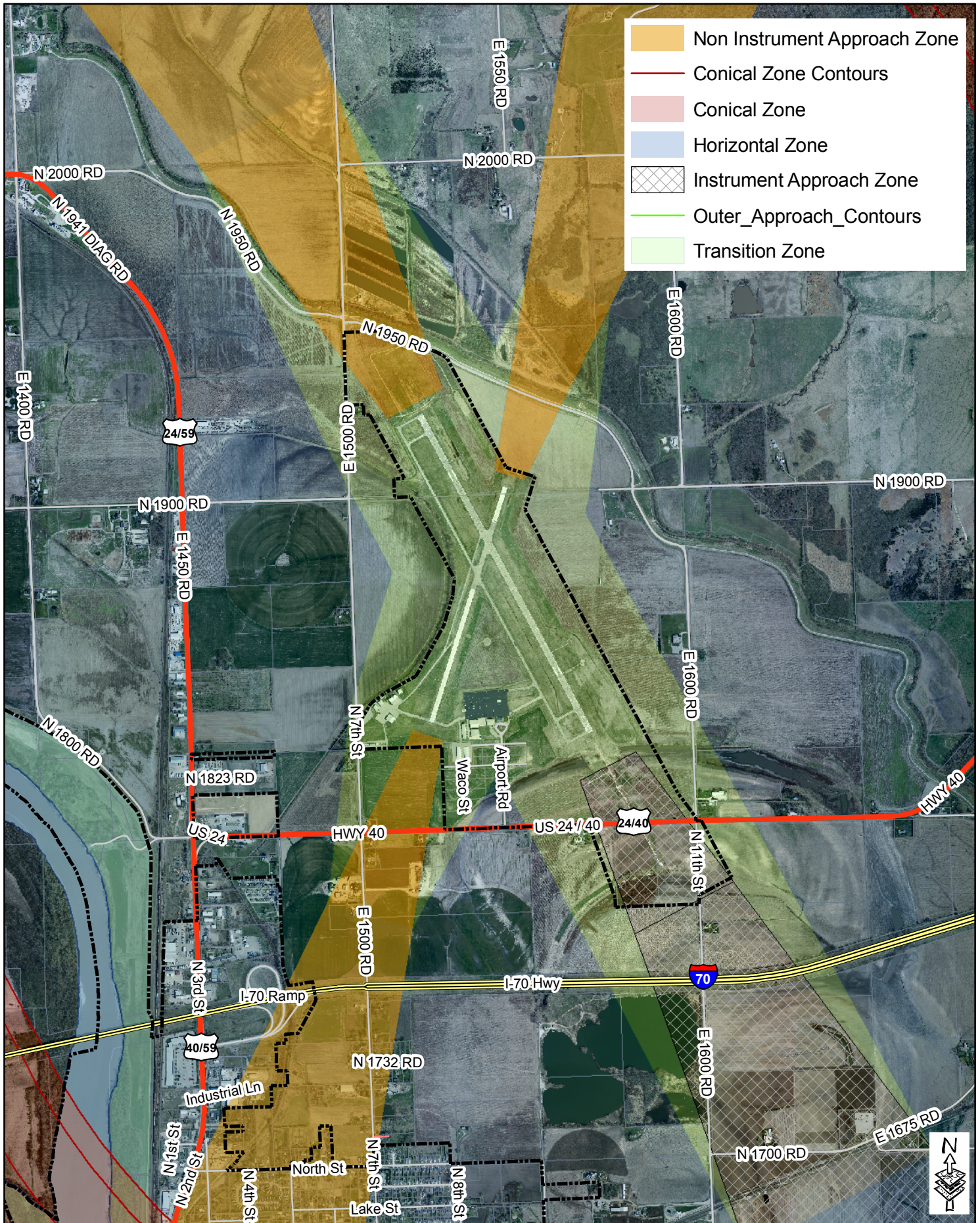


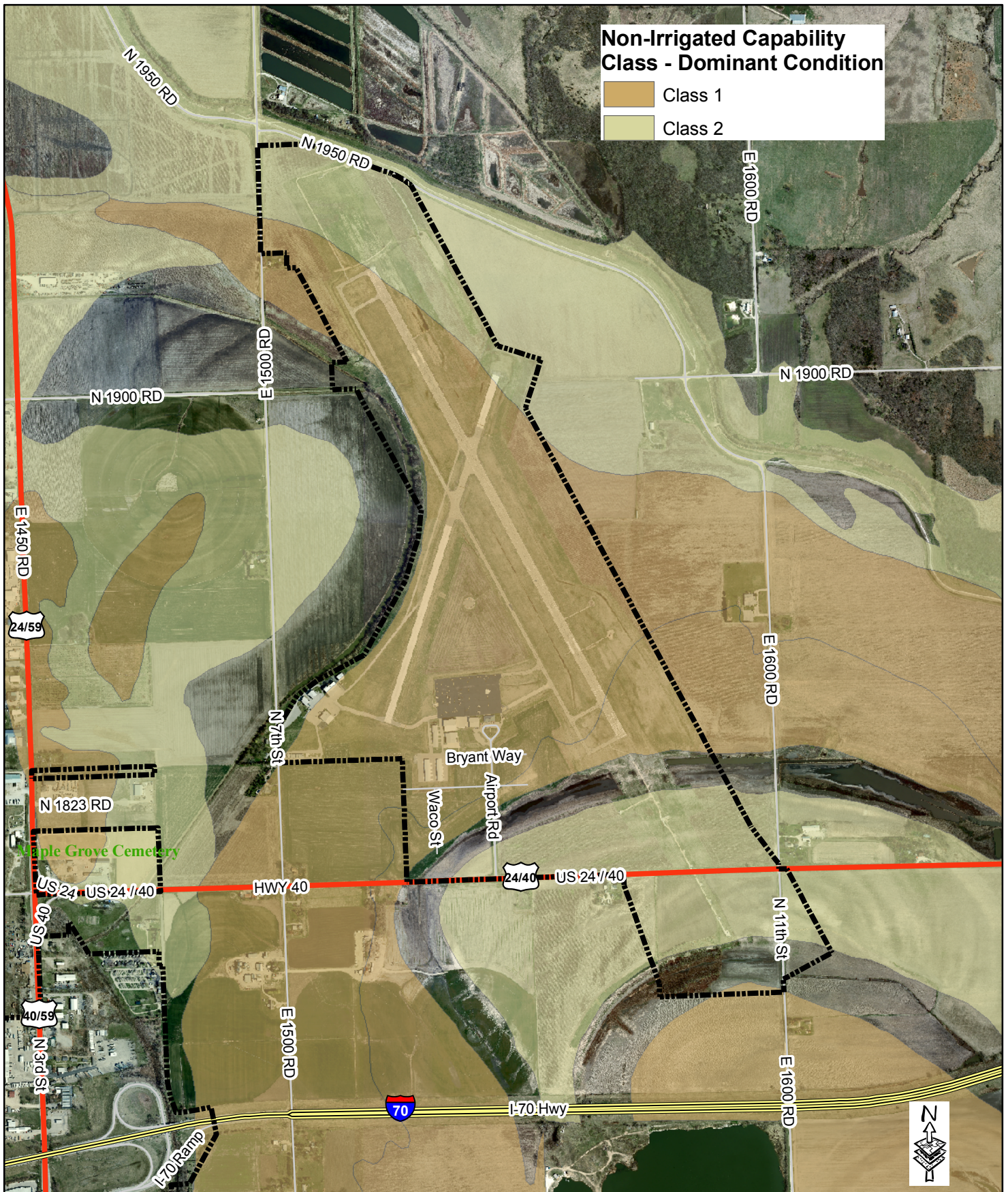


Zoning prior to July 2006





NRCS Class 1 & 2 Soils



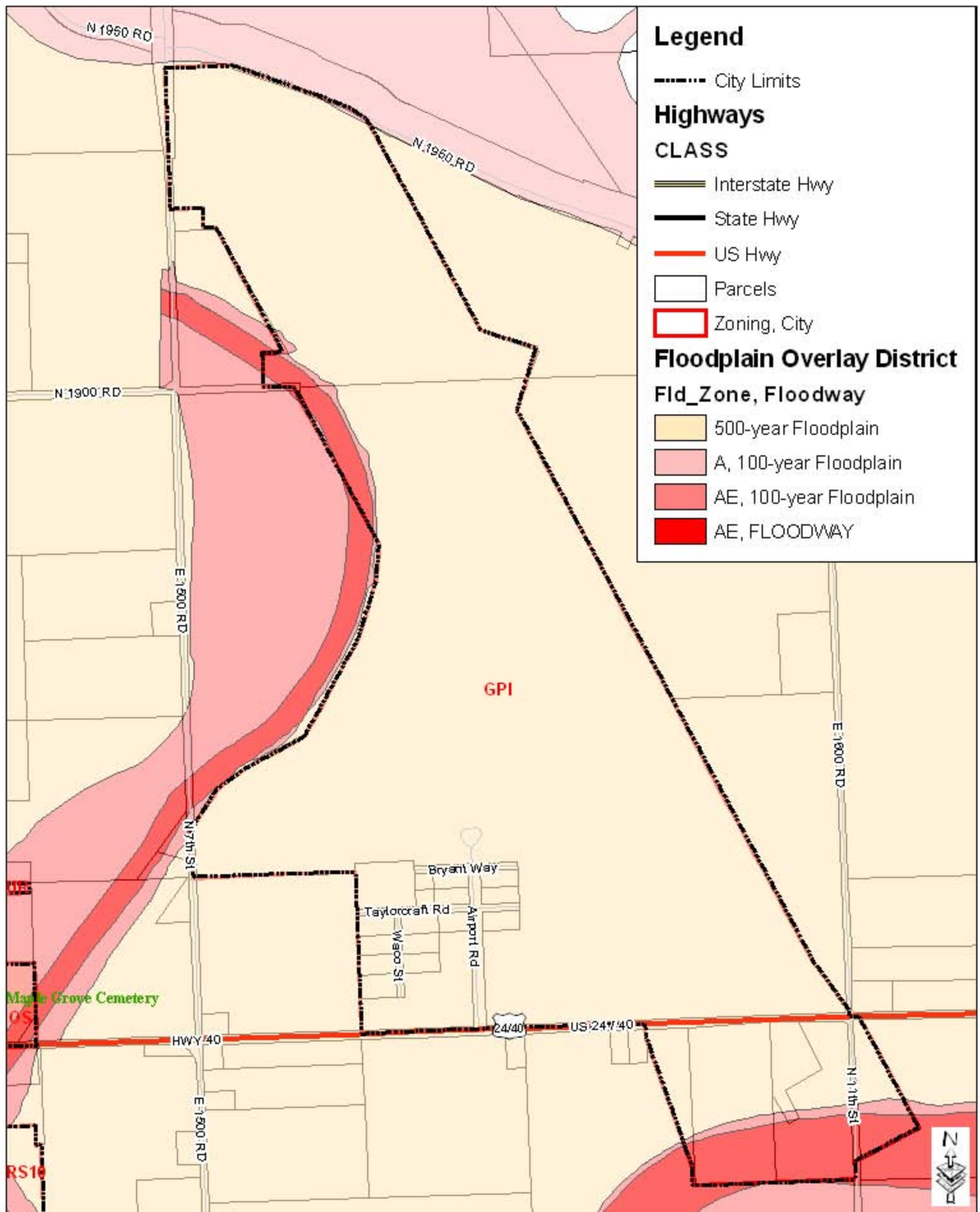
DISCLAIMER NOTICE

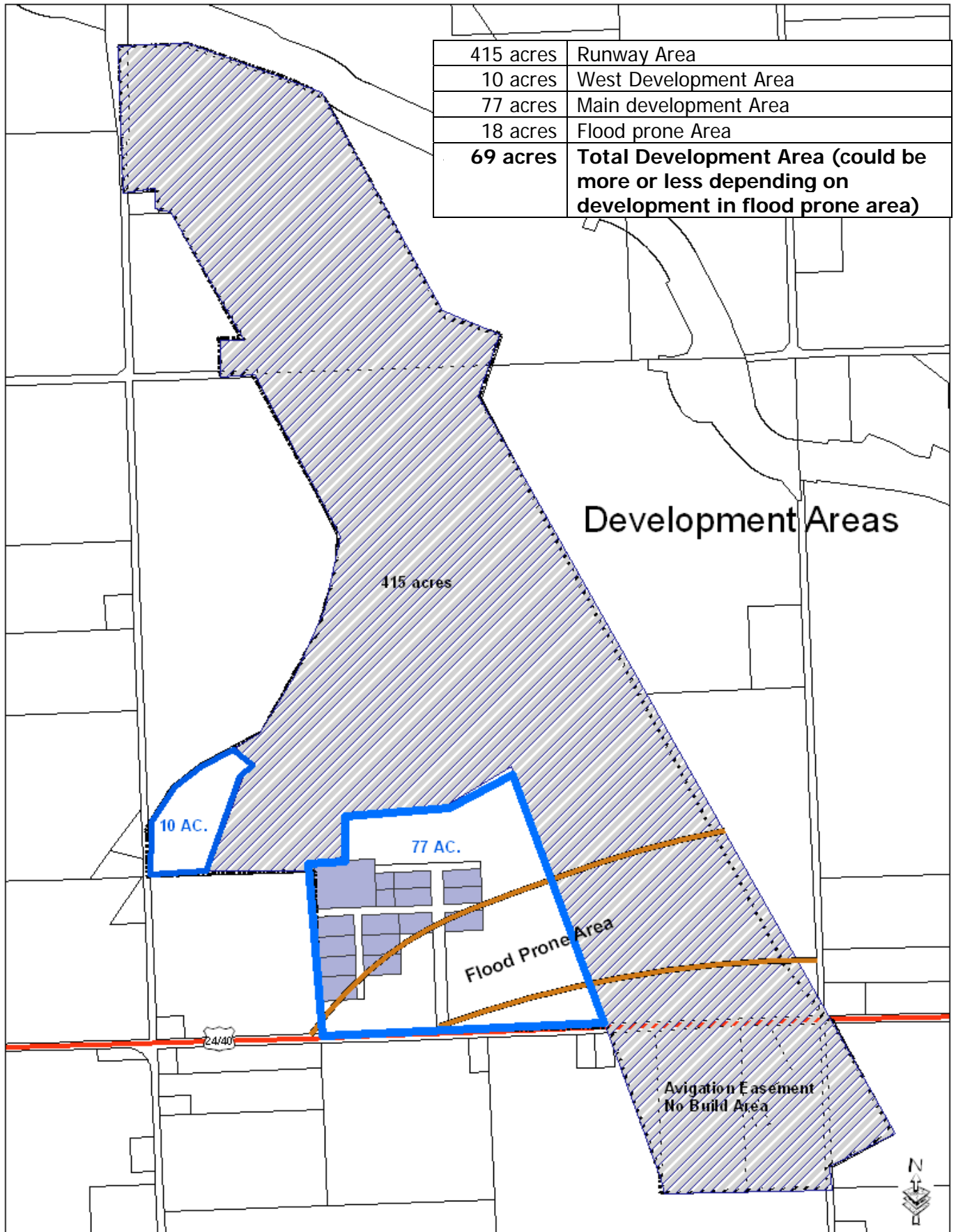
The map is provided "as is" without warranty or any representation of accuracy, timeliness or completeness. The burden for determining accuracy, completeness, timeliness, merchantability and fitness for or the appropriateness for use rests solely on the requester. The City of Lawrence makes no warranties, express or implied, as to the use of the map. There are no implied warranties of merchantability or fitness for a particular purpose. The requester acknowledges and accepts the limitations of the map, including the fact that the map is dynamic and is in a constant state of maintenance, correction and update.

0 350 700 1,400 2,100 2,800
Feet

1 inch = 1,400 feet

Existing Zoning GPI and FP





Development Potential map
Z4-5-09

Existing Uses at Lawrence Municipal Airport.

Tenant	Description provided by Public Works	Use Classification
Alligator, Inc c/o Ron Renz	Light Industrial, aircraft research, storage, manufacturing, and service	20-1735 Industrial General
Urish, Roderick (Don's Diesel)	Parts, storage and repairs	20-1766 Vehicle Sales and Service/ Heavy Equipment Repairs
GUT Works	Light Industrial, aircraft research, storage, manufacturing, and service	20-1735 Industrial General
Stuber Research, Inc. c/o Al Stuber	Research, storage, and repairs	20-1756 Research Services
Hetrick Air Services (FBO)	Service, sales, storage, and general aviation management	20-1766 Vehicles Sale and service /Heavy equipment Sales/Rental;
Great Planes, Inc. c/o Steve Craig	Sales and service	20-1766 Vehicles Sale and service /Heavy equipment Sales/Rental;
T-Hangars A, B C	Covered storage for aircraft	20-1767 Wholesale, Storage, and Distribution/ Light
Airport Terminal		20-1764 Utilities and Services, Major