



**LAWRENCE REGION
Antique Automobile Club of America**

P. O. Box 442006
Lawrence, Kansas 66044
785 - 843 - 2222



March 27, 2009

City Commission
City Hall
6 East 6th
Lawrence, Kansas 66044

Dear Commissioners:

In accordance with City Code Section 5-705, Part (G), "Signs of community interest which are approved by the City Commission.", this letter is a request for approval to temporarily erect directional and notification signs along 23rd street in the area of the Douglas County Fairgrounds. These signs are in connection with "The Lawrence Swap Meet" to be held on May 1, 2 & 3, 2009. Pursuant to the code, we ask for exemption from any permit or fees.

The Lawrence Region Antique Automobile Club of America is a non-profit organization and one of 400 regional clubs of the Antique Automobile Club of America. The AACA was founded in 1935 and is the largest antique automobile club in the world with over 60,000 members.

2009 will mark the 46th year that the LRAACA has conducted its annual swap meet in Lawrence. This swap meet is one of the largest in Kansas and attracts an average of 600 vendors from many areas of our nation. Attendance for the three-day swap meet, which is open to the public and free of charge, is an estimated 35,000 patrons (fig. 1).

"The AACA is dedicated to perpetuating the memories of the early automobiles by encouraging their history, collection and use." According to Article 1, Section 2 of the LRAACA by-laws, "The purpose of this region shall be to supplement the activities of the Antique Automobile Club of America and to provide mutual enjoyment to its members."

The LRAACA supplements the activities of the AACA are through community service. Over the past 46 years, LRAACA has contributed tens

of thousands of dollars to local charities and health organizations, such as United Way of Douglas County, Lawrence Habitat for Humanity, Douglas County Visiting Nurses, Heart of America Hospice, Parkinson Foundation, and American Heart Association. In addition LRAACA has furthered the education of Lawrence youth by sponsoring the Lawrence High School Auto Club and providing yearly scholarships to students at Lawrence High School, Free State High School, and contributing to McPherson College.

Elsewhere in the community, the Douglas County 4-H Club, Troop 247 of the Boy Scouts of America, other community and regional car clubs, as well as city and county businesses, benefit from working with the LRAACA and providing support during the swap meet. Further LRAACA has provided funding for several improvements to the Douglas County Fairgrounds.

Directional signs:

The directional signs requested are constructed of heavy gauge aluminum and measure 24 X 48 inches. All signs have red lettering on a yellow background of reflective "Scotchlight" material. They are supported by 2 X 4 posts, 5 feet tall, and anchored with large tent stakes and chains.

Four (4) of these signs read:

VENDOR ENTRANCE
AHEAD

A fifth two-sided sign reads:

VENDORS

(directional arrow to left on one side, right other side)
(Fig.2)

These signs are to be placed along the south side of 23rd Street and/or median at the locations indicated on map (fig.3).

The purpose of these signs is to direct swap meet vendors to the proper entrance onto the fairgrounds. The directional signs are needed for a period from 12:00 p.m. Friday May 1, 2009 to 2:00 p.m. Saturday May 2, 2009.

Notification Signs:

The notification signs requested are constructed of heavy gauge aluminum and measure 48 X 48 inches. All signs have red lettering on a yellow background of reflective "Scotchlight" material. They are supported by 2 X 4 posts, 5 feet tall, and anchored with large tent stakes and chains.

These two (2) signs read:

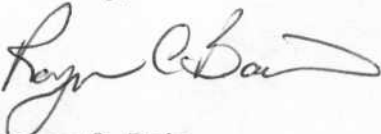
SWAP
MEET
(directional arrow to left or right)
(fig.4)

One sign would be located about 100 feet to the west of the intersection of 23rd Street and Harper Street on the south side of 23rd Street. The other sign would be located the north side of 23rd Street about 100 feet to the east of the east entrance to the fairgrounds (fig.5).

These notification signs are needed for a period from 6:00 a.m. Saturday May 2, 2008 to 12:00 Noon, Sunday May 3, 2009. The purpose of these signs is to direct the public to the proper entrances onto the fairgrounds.

The Lawrence Region Antique Automobile Club of America appreciates your help as we continue to serve Lawrence and the region.

Sincerely,



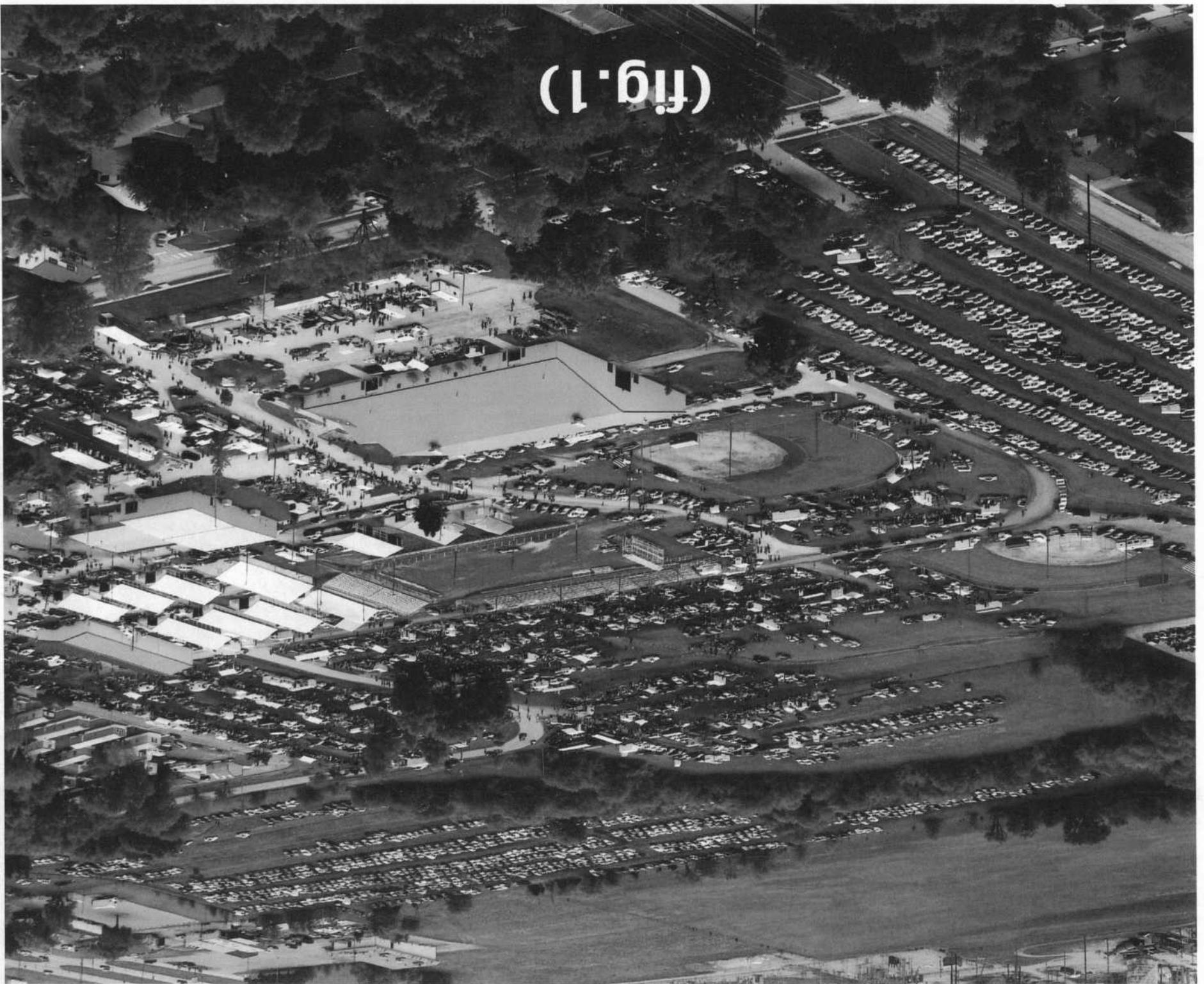
Roger C. Bain

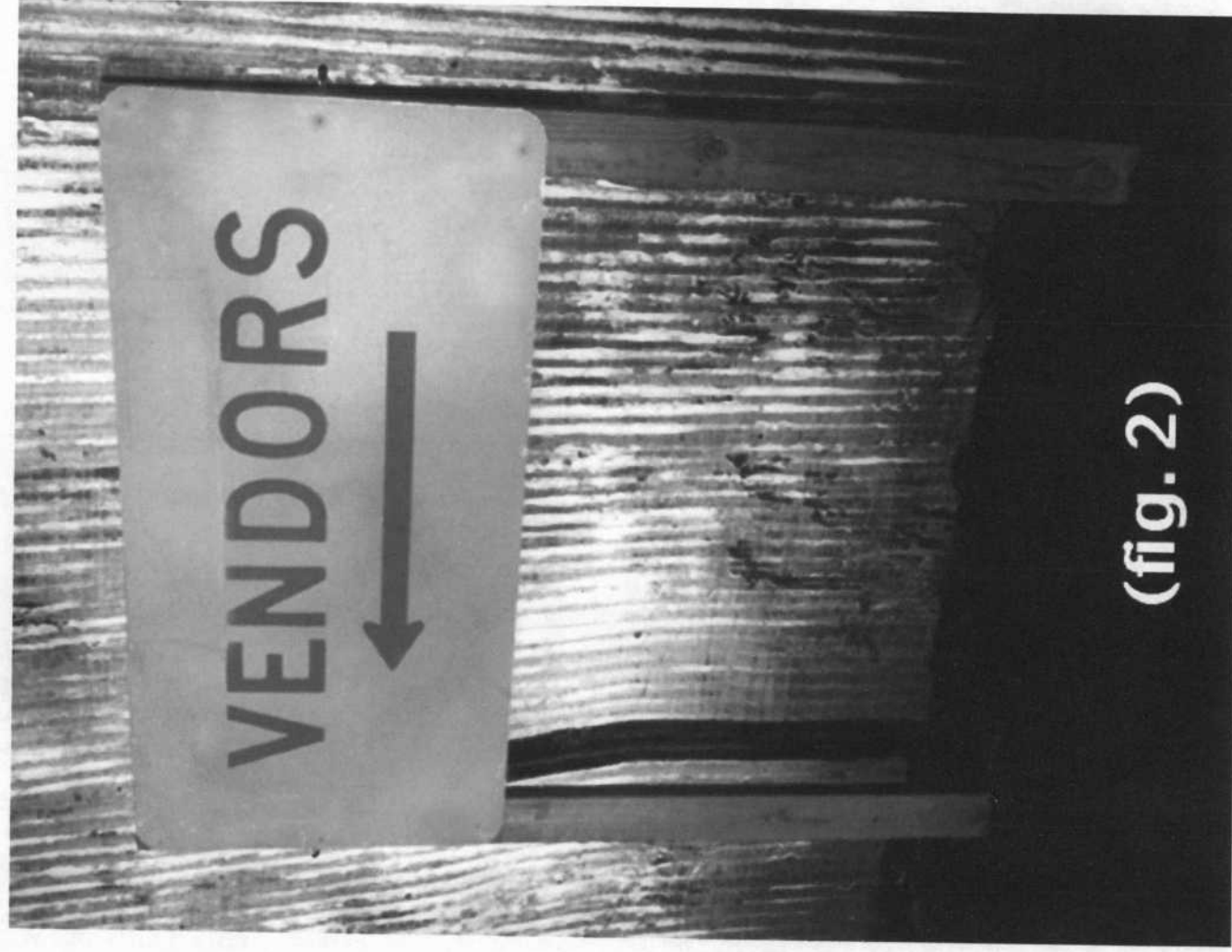
Swap Meet Committee 2009
785-393-0112

Approximate Locations of Signs (fig.5)

- #1 - 1541 East 23rd Street
- #2 - 1919 East 23rd Street
- #3 - 2176 East 23rd Street
- #4 - 1600 Road
- #5 - Entrance to Farmland

(fig. 1)

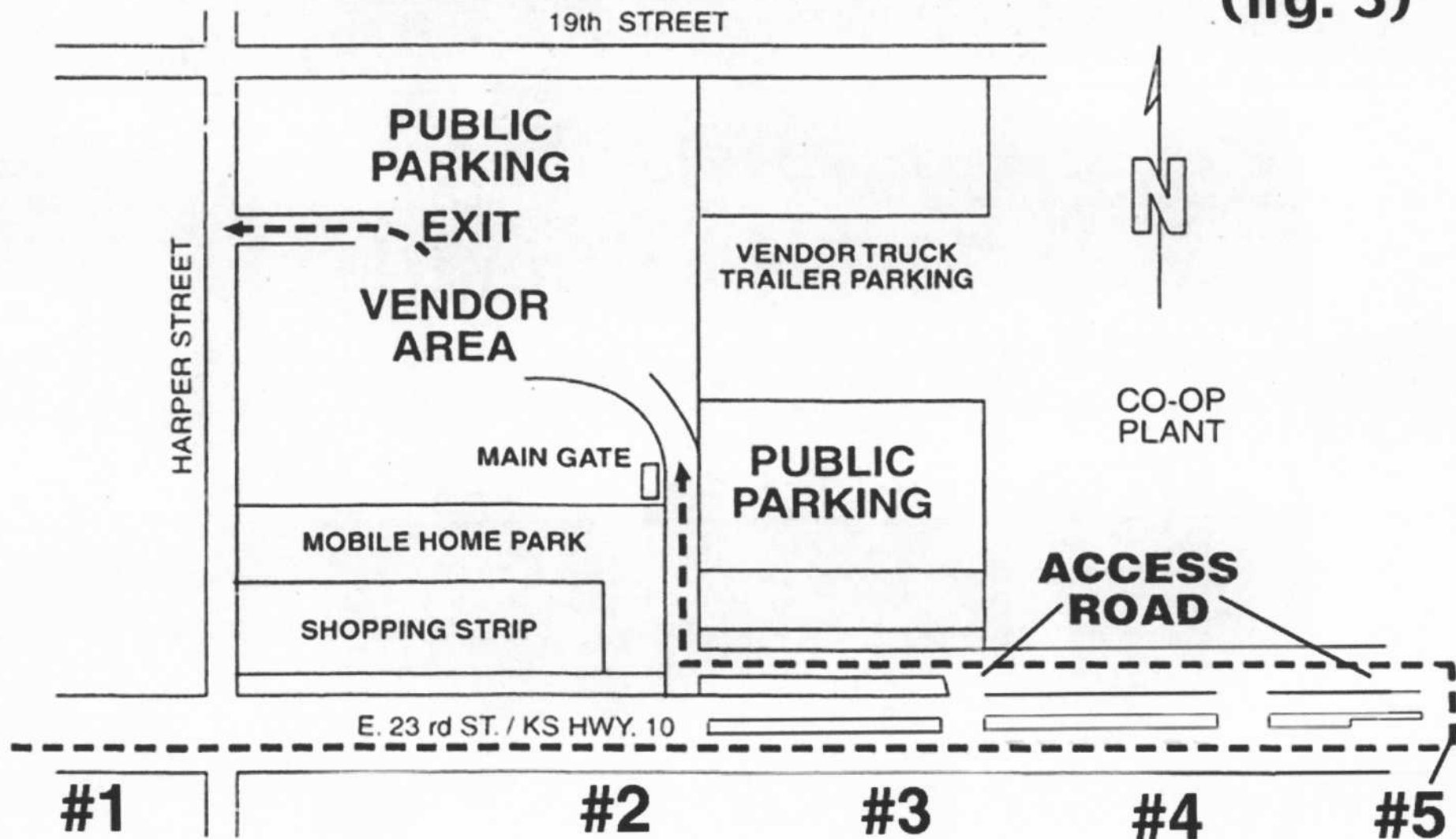




(fig. 2)

VENDOR'S ENTRANCE MAP

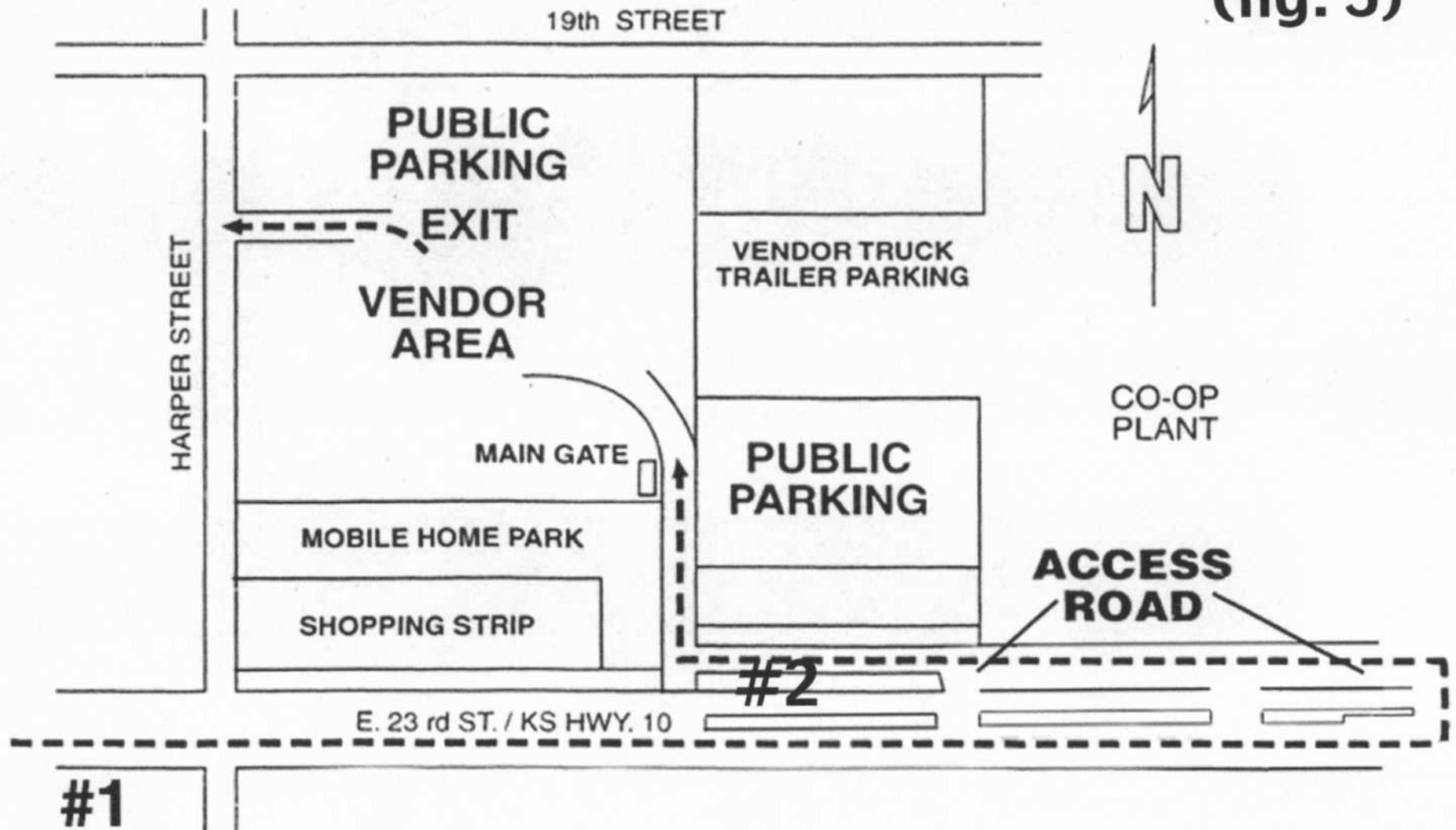
(fig. 3)





VENDOR'S ENTRANCE MAP

(fig. 5)



LAWRENCE SWAP MEET

Friday PM, Saturday, Sunday AM May 1, 2, 3 – 2009

At Douglas County 4-H Fairgrounds
1/4 mile North of K-10 (East 23 Street) Highway on Harper St.

For Automotive & Related Items Only

PUBLIC

Admission: Free

Parking donation: \$5.00 per vehicle

Parking Areas:

North end of Fairground

East off Fairground –
off K10 Hwy

Hours:

Friday: 1:00 p.m. to Dark

Saturday: 6:30 a.m.

Sunday: 7:00 a.m. to 12:00 p.m.

VENDORS

FEES

Reservations – Both days
\$30.00 / Space – Advanced
\$40.00 / Space – At Gate

Car Corral – same as above

Space Size

Inside 12 x 12 feet

Outside 15 x 20 feet

SET-UP

Friday: 12:00 p.m. to 10:00 p.m. /

Saturday: 6:00 a.m. to 2:00 p.m.

[No admittance to Fairground

10:00 p.m. to 6:00 a.m.]

Sunday: Fairgrounds close at
12:00 p.m. to vendors



46th ANNUAL

Kansas' Oldest Swap Meet

Sponsored By

Lawrence Region Antique Automobile Club of America

NO ALCOHOLIC BEVERAGES

(Fairgrounds Regulations)

NO VENDOR OF FOOD, DRINK,

FIREWORKS OR FIREARMS

Prohibited - Operation of:
Motorized Vehicles, ATV's, or Cycles on Grounds

EXCEPT - Swap Meet Staff or

Approved Handicap Tags

More Info:

Lawrence Region A.A.C.A.

P.O. Box 442006

Lawrence, Kansas 66044

Phone 785/843-AACA

Fax 785/843-2222

Email LawrenceAACA@AOL.com

Concessions & Clean-up exclusively by 4-H Clu

Public Parking by Boy Scouts

We Reserve Right of Refusal

Not Responsible for Accidents

CITY ORDINANCE REQUIRES

ALL PETS BE ON A LEASH

47th Annual Swapmeet May 7 – 9, 2010

Deadline For Requesting Information: April 25, 2009

We are a non-profit organization. Benefits to go to the following organizations:
4-H clubs, college scholarships, AACA Museum, Visiting Nurses Association,
United Way, Boy Scouts, auto technical programs, AACA, St. Patricks Day
Parade, free car show and the Douglas County Fairgrounds

Lawrence Region

A.A.C.A.

P.O. Box 442006

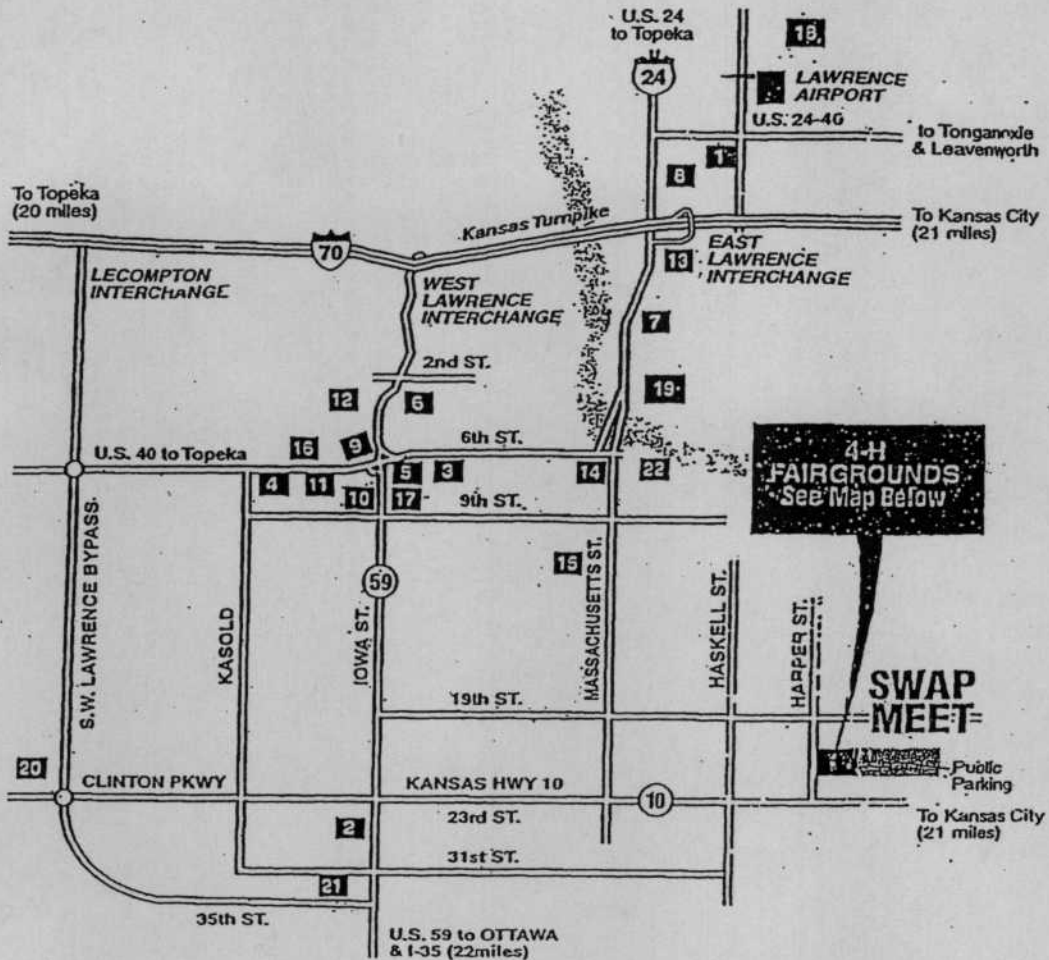
Lawrence, Kansas 66044

See Reverse for Map and Motels

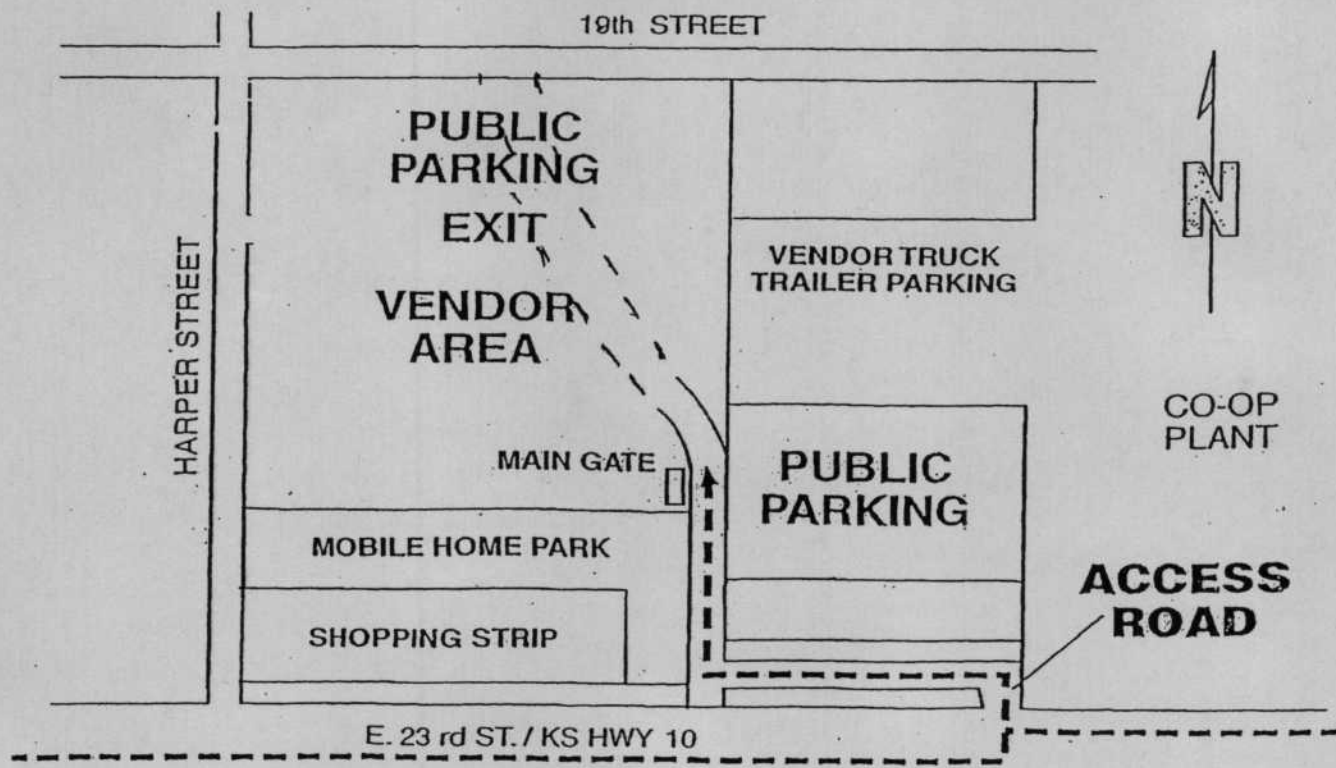


MOTELS & CAMPGROUNDS AREA CODE (785)

1. AIRPORT MOTEL..... 749-3355
2. DAYS INN..... 843-9100
3. COLLEGE MOTEL..... 843-0131
4. VIRGINIA INN..... 800-468-8979
5. BEST VALUE..... 841-6500
6. HOLIDAY HOLIDOME..... 841-7077
7. JAYHAWK MOTEL..... 843-4131
8. KOA CAMPGROUND..... 842-3377
9. RAMADA INN..... 842-7030
10. QUALITY INN..... 842-5100
11. WESTMINSTER INN..... 888-937-8646
12. SUPER 8 MOTEL..... 842-5721
13. BISMARCK INN..... 749-4040
14. ELDRIDGE HOTEL..... 749-5011
15. HALCYON HOUSE B&B..... 841-0314
16. HAMPTON INN..... 800-841-4994
17. BAYMOUNT INN..... 838-4242
18. CIRCLE S GUEST RANCH..... 843-4124
19. VISTORS BUREAU..... 865-4411
20. CLINTON LAKE STATE
PARK CAMPGROUND..... 842-8565
1. HOLIDAY INN EXPRESS..... 749-7555
2. SPRING HILL SUITES..... 841-2700



VENDOR'S ENTRANCE MAP



Watch for SWAP MEET ENTRY SIGNS!