

Parking Lot Capacity Report

January 2008 - December 2008

City of Lawrence Parking Control

Introduction

The City of Lawrence has nineteen parking lots for short and long-term parking in the downtown area. This report shows parking capacity, and availability, of the parking lots at various times throughout the day. The data for this report was gathered January 2008 through December 2008. The Parking Control staff counted cars approximately seven days a month, with two to three counts a day.

**Throughout this report, Monday-Friday and Saturday data results are separately displayed.*

Lawrence Parking Quadrants

For the purpose of this report, downtown will be referred to in quadrants separated North and South by 9th Street, and East and West by Massachusetts Street:

Quadrant 'A' - Northwest	416	available lot spaces = 23%
Quadrant 'B' - Northeast	721	available lot spaces = 39%
Quadrant 'C' - Southeast	487	available lot spaces = 26%
Quadrant 'D' - Southwest	<u>212</u>	available lot spaces = <u>12%</u>
	1836	100%

Metered and Non-Metered Parking Lots Table

(Exhibit-1) is a table of the parking lots and their corresponding available spaces. The data for this report did not include capacity counts for the reserved parking spaces in the Riverfront Garage, New Hampshire Garage, and City Lot 7.

Parking Spaces vs. Parking Capacity Graphs

The graphs below show the total number of parking lot spaces in each downtown quadrant and the corresponding percentage of parking vehicle capacity. The first graph shows Monday-Friday capacity data and the second graph is Saturday capacity data.

Quadrant 'A' represents 23% of the downtown available lot spaces with 416. The average parking capacity in quadrant 'A' Monday-Friday was 251, representing 60%, and 259 on Saturdays, representing 62%. The total average number of vehicles in the downtown lots during a given weekday was 969. Quadrant 'A' held approximately 26% of these vehicles. The total average number of vehicles in the downtown lots during a given Saturday was 858. Quadrant 'A' held approximately 31% of these vehicles.

Quadrant 'B' represents 39% of the downtown available lot spaces with 721. The average parking capacity in quadrant 'B' Monday-Friday was 387, representing 54%, and 282 on Saturdays, representing 39%. The total average number of vehicles in the downtown lots during a given weekday was 969. Quadrant 'B' held approximately 40% of these vehicles. The total average number of vehicles in the downtown lots during a given Saturday was 858. Quadrant 'B' held approximately 33% of these vehicles.

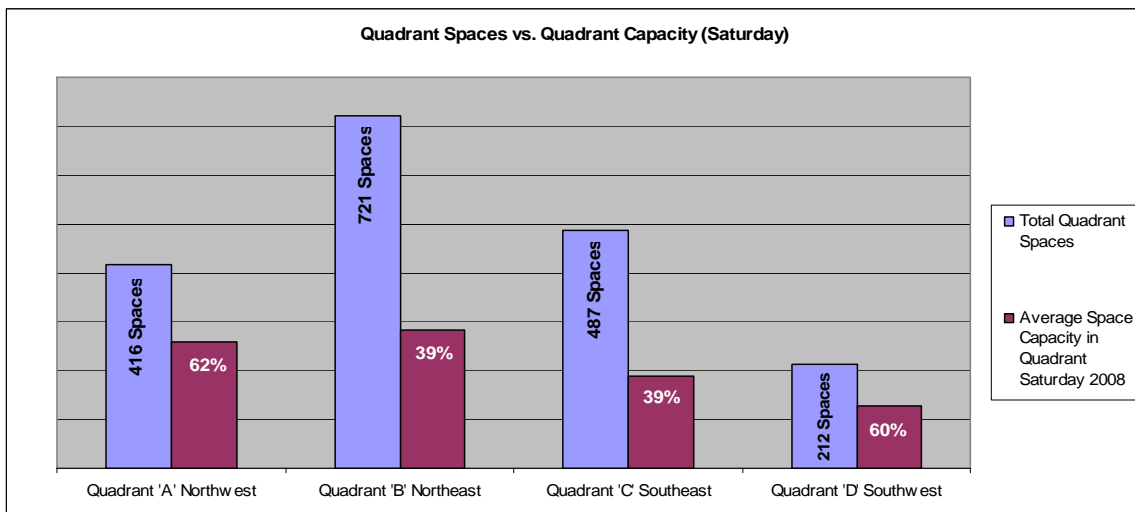
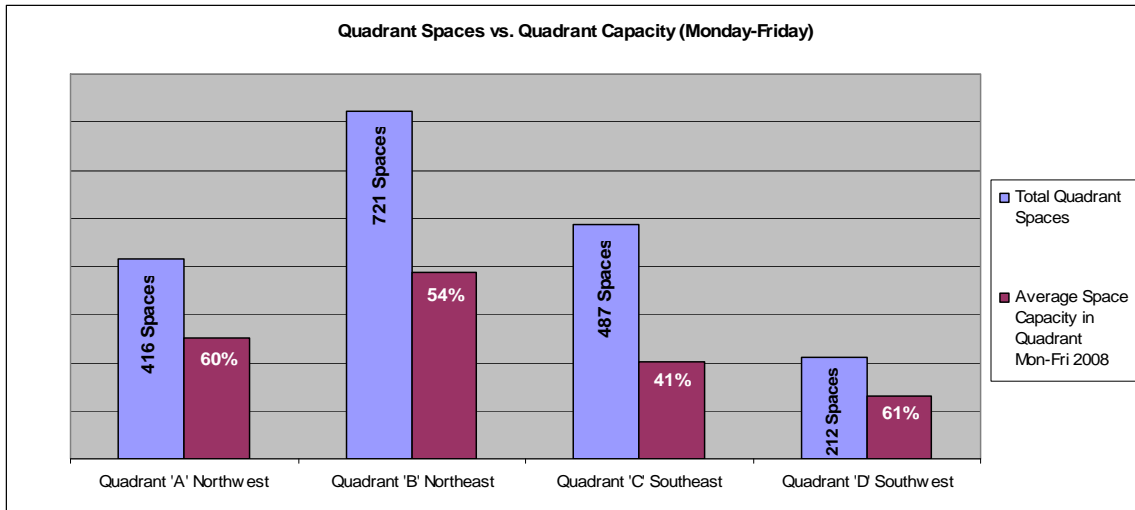
**As shown in (Exhibits-5 & 6), quadrant 'B' has City Lots 2 & 4 which maintain a 75%-100% capacity of vehicles during the afternoon and evening hours, both during the weekdays and weekends. Lot 8 maintains near 100% vehicle capacity during the weekdays. Lot 8 is the location for the Farmer's Market on Saturday morning, which increased the vehicle capacity during the market season. In the evenings Lot 8 drops to a 30%-40% vehicle capacity.*

Quadrant 'C' represents 26% of the downtown available lot spaces with 487. The average parking capacity in quadrant 'C' Monday-Friday was 202, representing 41%, and 189 on Saturdays, representing 39%. The total average number of vehicles in the downtown lots during a given weekday was 969. Quadrant 'C' held approximately 21% of these vehicles. The total average number of vehicles in the downtown lots during a given Saturday was 858. Quadrant 'C' held approximately 22% of these vehicles.

**Quadrant 'C' is host to the New Hampshire parking garage. In 2007, the third floor did not exceed a 6% vehicle capacity. In 2008, the average vehicle capacity is 27% during the week (35% daytime, 10% evenings), and 23% on Saturday (25% daytime, 19% evenings).*

Quadrant 'D' represents 12% of the downtown available lot spaces with 212. The average parking capacity in quadrant 'D' Monday-Friday was 129, representing 61%, and 128 on Saturdays, representing 60%. The total average number of vehicles in the downtown lots during a given weekday was 969. Quadrant 'D' held approximately 14% of these vehicles. The total average number of vehicles in the downtown lots during a given Saturday was 858. Quadrant 'D' held approximately 15% of these vehicles.

**Lot 5 maintains an 80%-90% parking capacity at all times.*



Locations of High Parking Traffic

Worth noting, are City lots registering a high volume of parked vehicles. These are City lots that border the rear of businesses on Massachusetts Street.

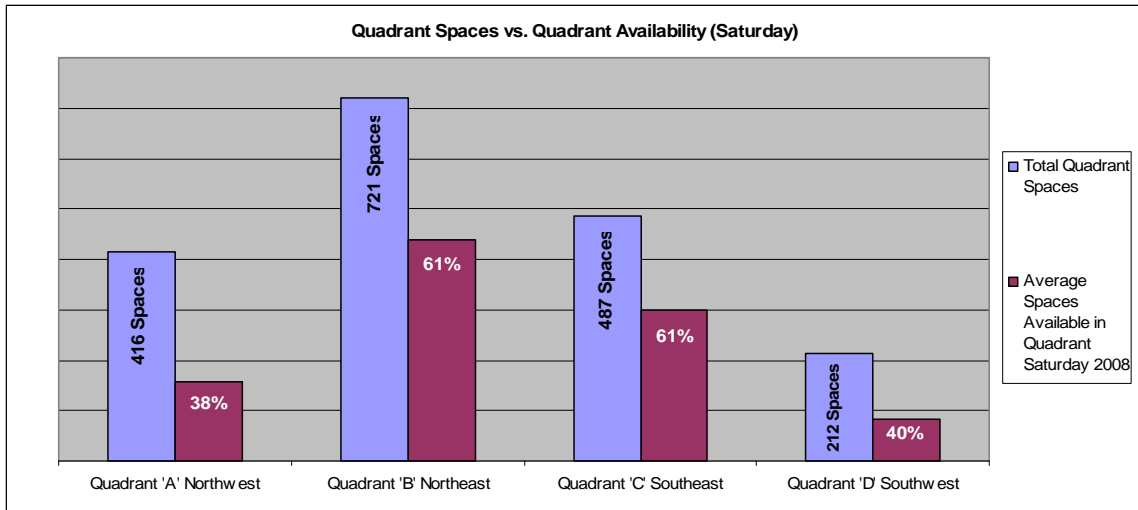
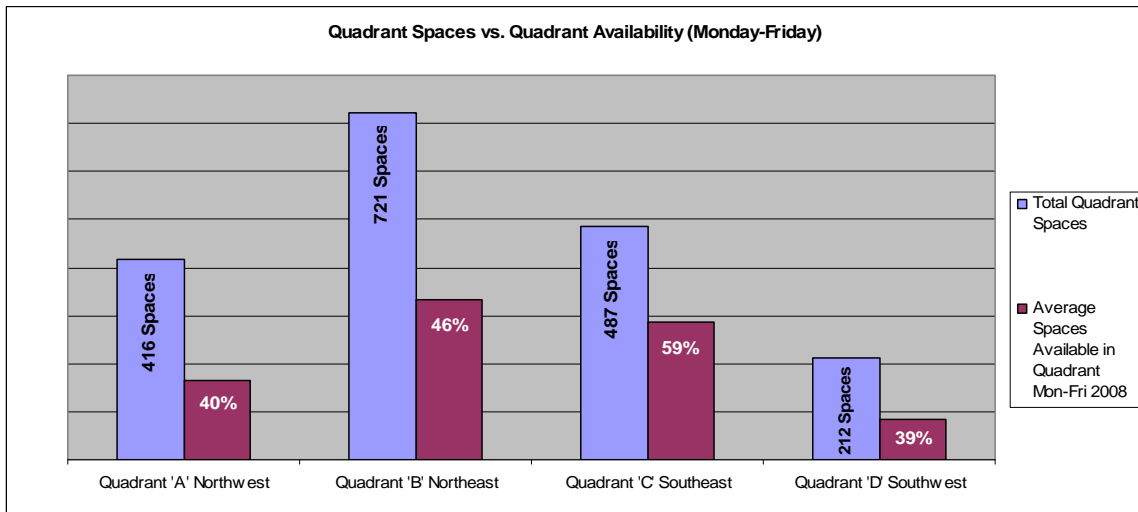
In quadrant 'A', parking lots 12 & 14, in the 700 block of Vermont Street, maintain an 86%-100% capacity in the afternoon and evening.

In quadrant 'B', parking lots 2 & 4, in the 700 and 800 block of New Hampshire Street respectively, maintain a 70%-100% capacity in the afternoon and evening. Lot 8 was used for Farmer's Market on Saturday mornings during the market season.

In quadrant 'D', parking lot 5, in the 900 block of Vermont Street, maintains an 80%-90% capacity during the day, and evening.

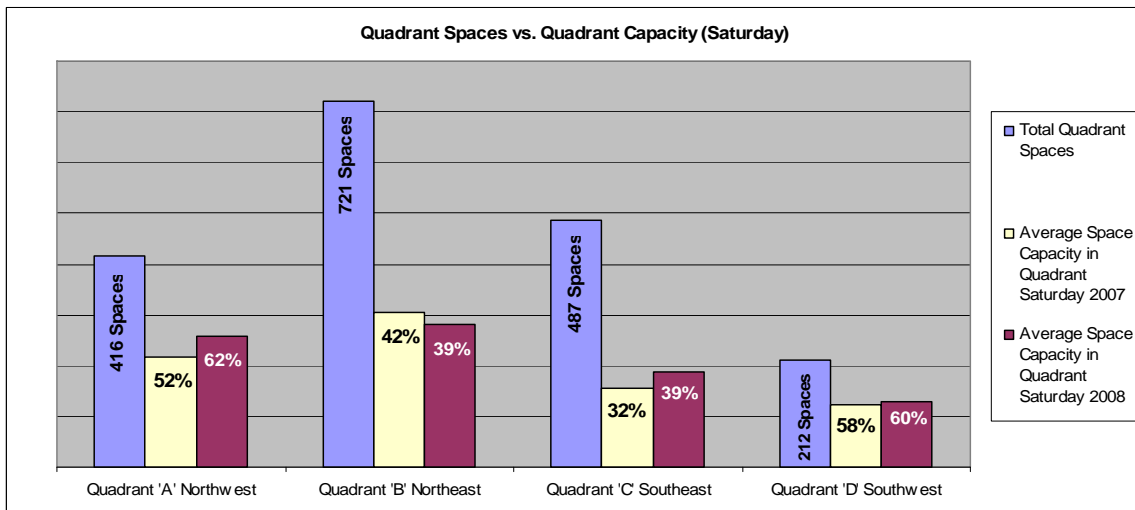
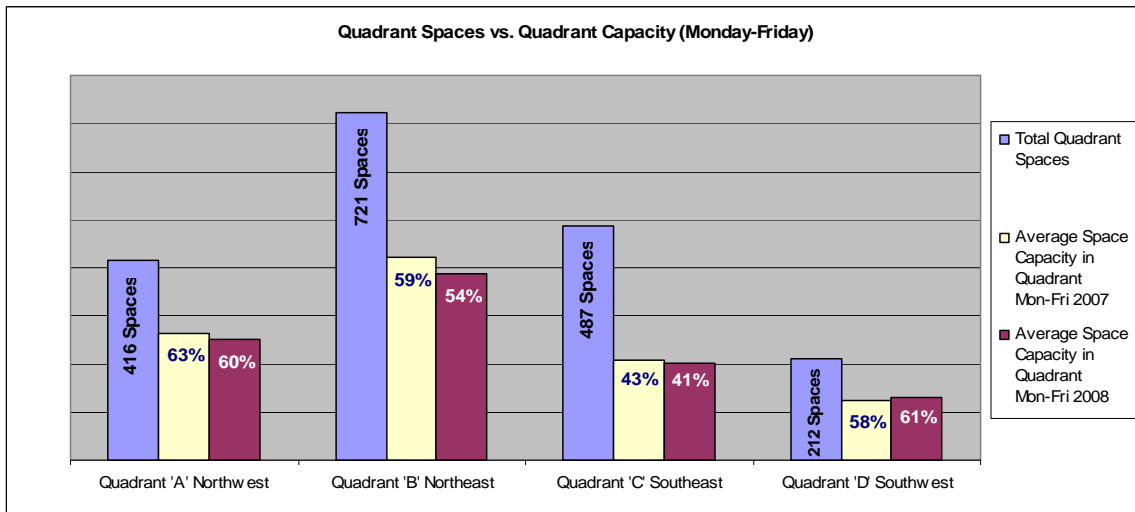
Parking Spaces vs. Parking Availability Graphs

The following graphs show the total number of parking lot spaces in each downtown quadrant and the corresponding percentage of parking availability. The first graph shows Monday-Friday availability and the second graph shows the Saturday availability for 2008.



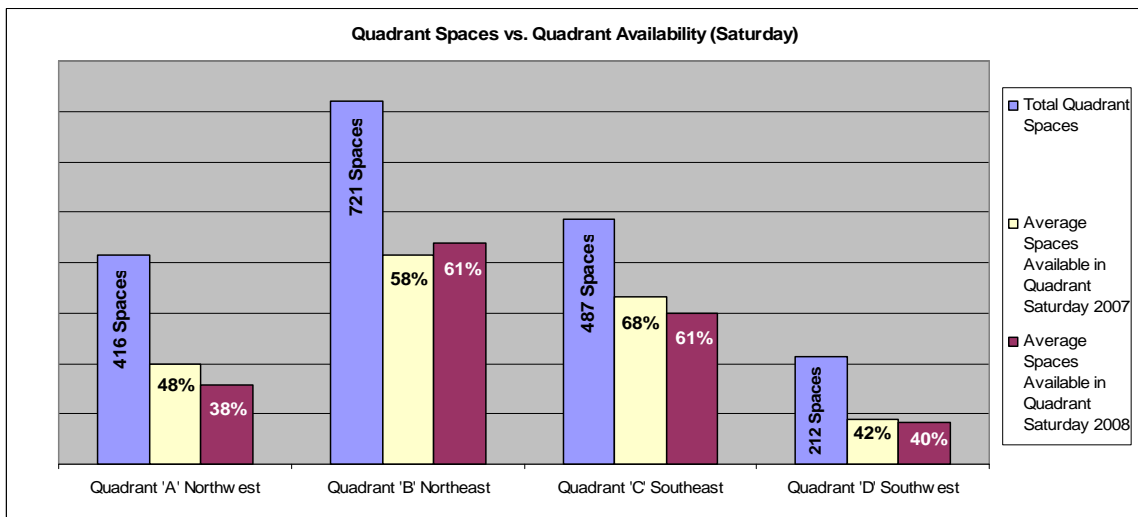
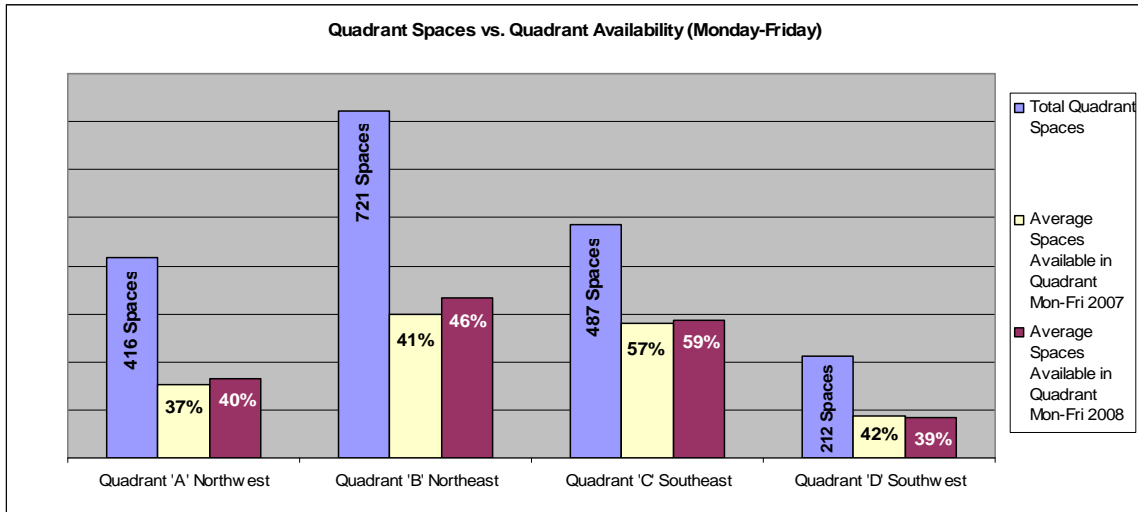
Parking Capacity Comparison 2007 vs. 2008

The following graphs show the total number of lot spaces available and the comparison between 2007 and 2008 parking lot capacity for each downtown quadrant. The first graph shows the Monday-Friday capacity and the second graph shows the Saturday capacity.



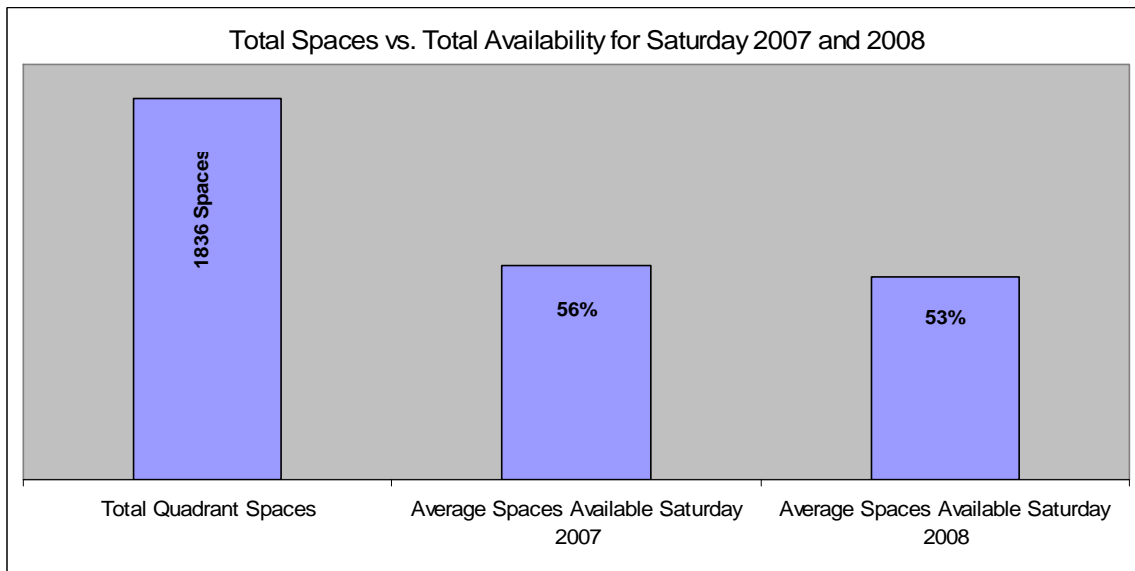
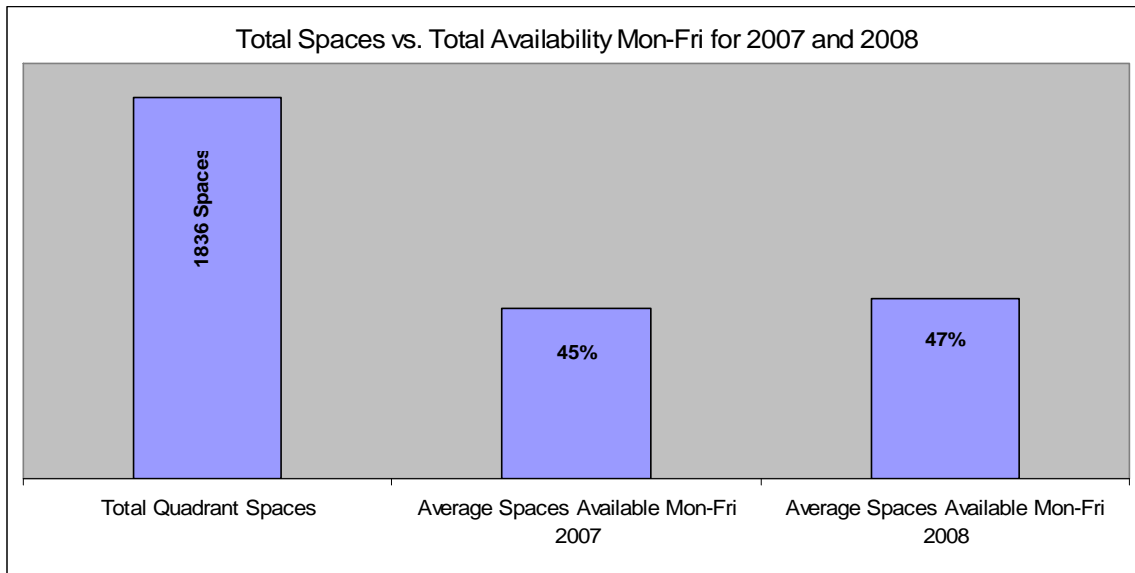
Parking Availability Comparison 2007 vs. 2008

The following graphs show the total number of lot spaces available and the comparison between 2007 and 2008 parking lot availability for each downtown quadrant. The first graph shows the Monday-Friday availability and the second graph shows the Saturday availability.



Total Parking Lot Availability Comparison for 2007 vs. 2008

The following graphs show the total number of lot spaces and the comparison between 2007 and 2008 parking lot average availability for all City lots. The first graph shows the Monday-Friday availability and the second graph shows the Saturday availability.



Parking Lot Capacity Data and Graph

(Monday-Friday Data Table)

(Exhibit-2) is a data table showing the average number of vehicles for each lot by morning, afternoon, and evening car counts, and the corresponding percentages. Below the table is a graph of the data. This exhibit is Monday-Friday data only.

Parking Lot Capacity Data and Graph

(Saturday Data Table)

(Exhibit-3) is a data table showing the average number of vehicles for each lot by morning, afternoon, and evening car counts, and the corresponding percentages. Below the table is a graph of the data. This exhibit is Saturday data only.

Parking Lot Capacity Graphs by Lot Number

(Monday-Friday Graphs)

(Exhibit-4) is a graph charting all of the City Lots separated by morning, afternoon, and evening parking capacities. The graphs are separated by downtown quadrants. This exhibit is Monday-Friday data only.

Parking Lot Capacity Graphs by Lot Number

(Saturday Graphs)

(Exhibit-5) is a graph charting all of the City Lots separated by morning, afternoon, and evening parking capacities. The graphs are separated by downtown quadrants. This exhibit is Saturday data only.

Parking Lot Total Capacity Graphs by Quadrant and Month

(Monday-Friday, and Saturday Graphs)

(Exhibit-6) are graphs charting the average capacity of the four downtown quadrants by month.

(January 2008-December 2008)

Parking Lot Total Capacity Graphs by Month

(Monday-Friday, and Saturday Graphs)

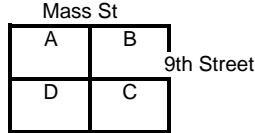
(Exhibit-7) are graphs charting the average parking lot capacity by month.
(January 2008-December 2008)

(EXHIBIT-1)

**Metered and Non-metered Parking Lots
Downtown - Lawrence, Kansas**

*Downtown quadrants are separated north and south by 9th Street, and east and west by Massachusetts Street.

Quadrant 'A' -Northwest
 Quadrant 'B' -Northeast
 Quadrant 'C' -Southeast
 Quadrant 'D' -Southwest



City Lot	Quad	Location	30 min meters	2 hr meters	10 hr meters	2 hr non-metered	10 hr non-metered	Reserved City & Private	Handi-capped	Total Lot Spaces	Total Lot Spaces per Quadrant	
15	A	600 block Vermont			35				1	36	416	Quadrant 'A' Northwest
13	A	700 block Vermont	3	31	78				5	117		
12	A	700 block Vermont				26			1	27		
14	A	700 block Vermont				34			2	36		
11	A	800 block Vermont			30				2	32		
3	A	800 block Vermont				162			6	168		
17	B	600 block New Hamp		23					2	25	869	Quadrant 'B' Northeast
Riverfront	B	600 block New Hamp				120	197	148	13	478		
16	B	600 block Rhode Is			43					43		
2	B	700 block New Hamp				70			2	72		
Hobbs	B	700 block New Hamp		10	25		24		4	63		
4	B	800 block New Hamp				83			3	86		
8	B	800 block New Hamp			97				5	102		
NH Garage	C	900 block New Hamp				201	257	22	13	493	509	Quadrant 'C' Southeast
LEC	C	1200 block Mass		14					2	16		
9	D	900 block Vermont			36				2	38	213	Quadrant 'D' Southwest
5	D	900 block Vermont				59			4	63		
7	D	1100 block Vermont		9	34			1	3	47		
10	D	1000 block Vermont				61			4	65		

City Lot Spaces 2007
 Minus Reserved City & Private **171**
Total Lot Spaces for Calculation of Lot Capacity 1836

(EXHIBIT-2)

Parking Lot Capacity Data: January 2008-December 2008
 (Monday through Friday Data)

City of Lawrence Parking Control

rev. 01/20/09 tp

Lot number	Lot Location	Town Quadrant	Total Spaces Available	Mornings		Afternoons		Evenings	
				Average # Cars Mornings Mon-Fri	Percent Capacity Mornings Mon-Fri	Average # Cars Afternoons Mon-Fri	Percent Capacity Afternoons Mon-Fri	Average # Cars Evenings Mon-Fri	Percent Capacity Evenings Mon-Fri
Lot 3	800 blk VT	A-northwest	168	69	41%	97	58%	68	41%
Lot 11	800 blk VT	A-northwest	32	27	84%	27	84%	3	10%
Lot 14	8th & VT	A-northwest	36	31	85%	32	88%	34	93%
Lot 12	7th & VT	A-northwest	27	22	81%	23	86%	26	98%
Lot 15	6th & VT	A-northwest	36	26	72%	21	59%	3	10%
Lot 13-2hr	700 blk VT	A-northwest	39	28	73%	31	79%	32	82%
Lot 13-10hr	700 blk VT	A-northwest	78	57	73%	57	73%	40	52%
Riverfront-2hr	6th & NH	B-northeast	133	53	40%	54	40%	33	24%
Riverfront-10hr	6th & NH	B-northeast	197	121	61%	117	59%	33	17%
Lot 16	7th & Rhode	B-northeast	43	21	48%	23	53%	5	11%
Hobbs	700 blk NH	B-northeast	63	27	43%	30	48%	26	42%
Lot 8	800 blk NH	B-northeast	102	96	94%	86	85%	33	32%
Lot 17	6th & NH	B-northeast	25	5	20%	9	38%	22	87%
Lot 2	700 blk NH	B-northeast	72	37	51%	63	87%	71	99%
Lot 4	800 blk NH	B-northeast	86	51	59%	62	72%	82	95%
NH Garage Basement	900 blk NH	C-southeast	105	67	63%	64	61%	25	24%
NH Garage-2hr	900 blk NH	C-southeast	103	42	41%	46	44%	59	58%
NH Garage-10hr 2nd	900 blk NH	C-southeast	128	72	57%	72	56%	33	25%
NH Garage-10hr 3rd	900 blk NH	C-southeast	135	49	36%	46	34%	13	10%
LEC	Park St N	C-southeast	16	8	53%	9	55%	2	11%
Lot 7-2hr	11th & VT	D-southwest	9	3	34%	3	38%	7	74%
Lot 7-10hr	11th & VT	D-southwest	37	22	59%	21	56%	28	76%
Lot 10	1000 blk VT	D-southwest	65	22	34%	31	47%	35	55%
Lot 9	900 blk VT	D-southwest	38	24	63%	19	50%	12	32%
Lot 5	900 blk VT	D-southwest	63	53	84%	52	83%	56	89%

Mon-Fri

Quadrant A - Northwest

Lot Capacity AM- 73%

Lot Capacity PM- 75%

Lot Capacity Evenings- 55%

Mon-Fri

Quadrant B - Northeast

Lot Capacity AM- 52%

Lot Capacity PM- 60%

Lot Capacity Evenings- 51%

Mon-Fri

Quadrant C - Southeast

Lot Capacity AM- 50%

Lot Capacity PM- 50%

Lot Capacity Evenings- 25%

Mon-Fri

Quadrant D - Southwest

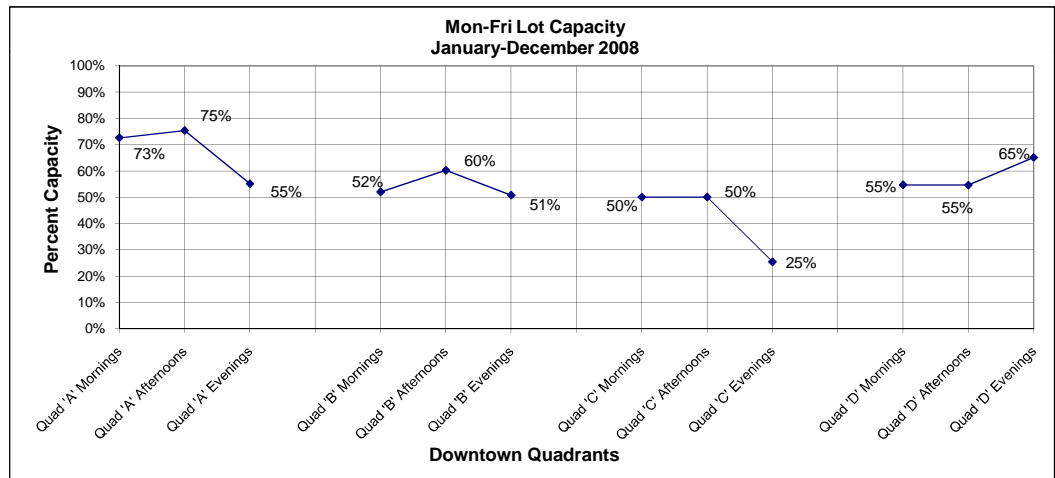
Lot Capacity AM- 55%

Lot Capacity PM- 55%

Lot Capacity Evenings- 65%

Lot Capacity: Jan-Dec 2008
 (Monday through Friday Data)

Quad 'A' Mornings	73%
Quad 'A' Afternoons	75%
Quad 'A' Evenings	55%
Quad 'B' Mornings	52%
Quad 'B' Afternoons	60%
Quad 'B' Evenings	51%
Quad 'C' Mornings	50%
Quad 'C' Afternoons	50%
Quad 'C' Evenings	25%
Quad 'D' Mornings	55%
Quad 'D' Afternoons	55%
Quad 'D' Evenings	65%



Parking Lot Capacity Data: January 2008-December 2008

(Saturday Data)

City of Lawrence Parking Control

rev. 01/20/09 tp

Lot number	Lot Location	Town Quadrant	Total Spaces Available	Mornings		Afternoons		Evenings	
				Average # Cars Mornings Saturday	Percent Capacity Mornings Saturday	Average # Cars Afternoons Saturday	Percent Capacity Afternoons Saturday	Average # Cars Evenings Saturday	Percent Capacity Evenings Saturday
Lot 3	800 blk VT	A-northwest	168	84	50%	128	76%	94	56%
Lot 11	800 blk VT	A-northwest	32	24	75%	21	64%	6	19%
Lot 14	8th & VT	A-northwest	36	27	75%	35	96%	34	94%
Lot 12	7th & VT	A-northwest	27	25	94%	27	99%	27	100%
Lot 15	6th & VT	A-northwest	36	7	19%	8	22%	5	13%
Lot 13-2hr	700 blk VT	A-northwest	39	29	74%	33	85%	21	55%
Lot 13-10hr	700 blk VT	A-northwest	78	43	56%	56	72%	41	53%
Riverfront-2hr	6th & NH	B-northeast	133	28	21%	30	22%	44	33%
Riverfront-10hr	6th & NH	B-northeast	197	26	13%	26	13%	27	14%
Lot 16	7th & Rhode	B-northeast	43	1	2%	3	6%	4	9%
Hobbs	700 blk NH	B-northeast	63	16	26%	32	51%	28	44%
Lot 8	800 blk NH	B-northeast	102	68	67%	19	19%	41	40%
Lot 17	6th & NH	B-northeast	25	3	12%	17	69%	21	85%
Lot 2	700 blk NH	B-northeast	72	40	55%	69	96%	70	97%
Lot 4	800 blk NH	B-northeast	86	75	88%	76	89%	82	95%
NH Garage Basement	900 blk NH	C-southeast	127	36	28%	38	30%	38	30%
NH Garage-2hr	900 blk NH	C-southeast	103	74	72%	58	57%	68	66%
NH Garage-10hr 2nd	900 blk NH	C-southeast	128	56	44%	49	38%	52	41%
NH Garage-10hr 3rd	900 blk NH	C-southeast	135	36	27%	31	23%	25	19%
LEC	Park St N	C-southeast	16	2	9%	1	7%	1	6%
Lot 7-2hr	11th & VT	D-southwest	9	5	60%	3	34%	2	24%
Lot 7-10hr	11th & VT	D-southwest	37	21	56%	12	33%	9	26%
Lot 10	1000 blk VT	D-southwest	65	27	41%	39	61%	43	66%
Lot 9	900 blk VT	D-southwest	38	20	53%	22	58%	14	36%
Lot 5	900 blk VT	D-southwest	63	57	90%	58	91%	51	80%

Saturday

Quadrant A - Northwest

Lot Capacity AM- 63%

Lot Capacity PM- 74%

Lot Capacity Evenings- 56%

Saturday

Quadrant B - Northeast

Lot Capacity AM- 35%

Lot Capacity PM- 46%

Lot Capacity Evenings- 52%

Saturday

Quadrant C - Southeast

Lot Capacity AM- 36%

Lot Capacity PM- 31%

Lot Capacity Evenings- 32%

Saturday

Quadrant D - Southwest

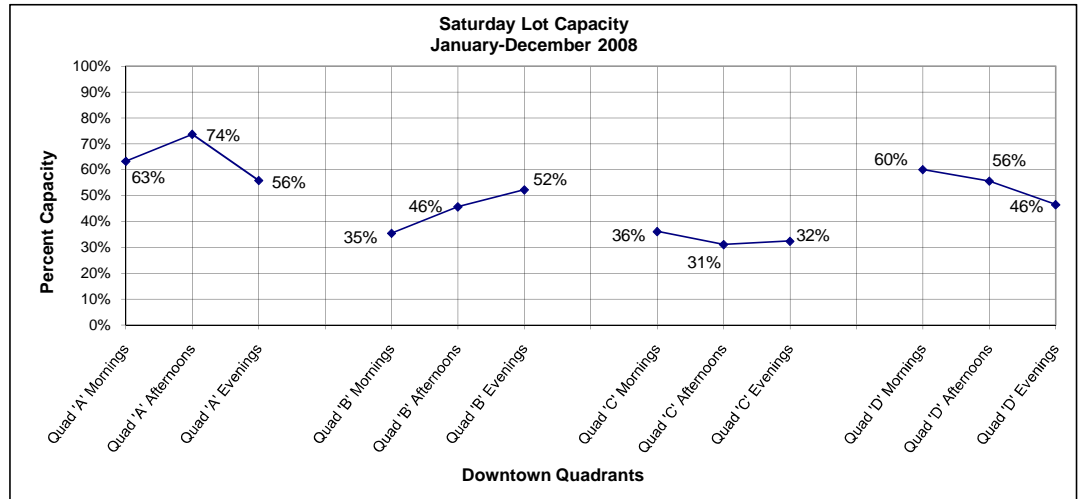
Lot Capacity AM- 60%

Lot Capacity PM- 56%

Lot Capacity Evenings- 46%

Lot Capacity: Jan-Dec 2008
(Saturday Data)

Quad 'A' Mornings	63%
Quad 'A' Afternoons	74%
Quad 'A' Evenings	56%
Quad 'B' Mornings	35%
Quad 'B' Afternoons	46%
Quad 'B' Evenings	52%
Quad 'C' Mornings	36%
Quad 'C' Afternoons	31%
Quad 'C' Evenings	32%
Quad 'D' Mornings	60%
Quad 'D' Afternoons	56%
Quad 'D' Evenings	46%



(EXHIBIT-4)

Parking Lot Capacity Graphs: January 2008-December 2008

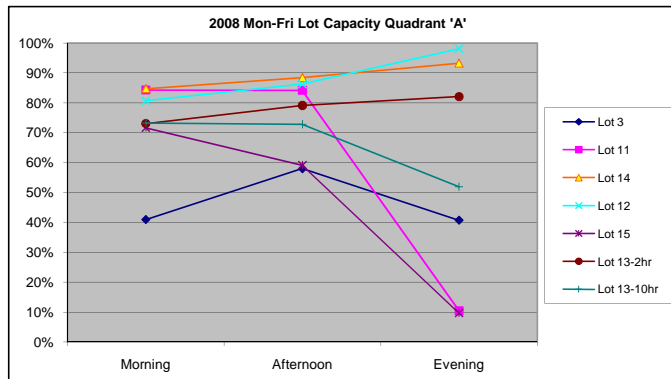
(Monday through Friday Data)

City of Lawrence Parking Control

January 2008-December 2008 (Monday through Friday)

Quadrant 'A'	Morning	Afternoon	Evening
Lot 3	41%	58%	41%
Lot 11	84%	84%	10%
Lot 14	85%	88%	93%
Lot 12	81%	86%	98%
Lot 15	72%	59%	10%
Lot 13-2hr	73%	79%	82%
Lot 13-10hr	73%	73%	52%

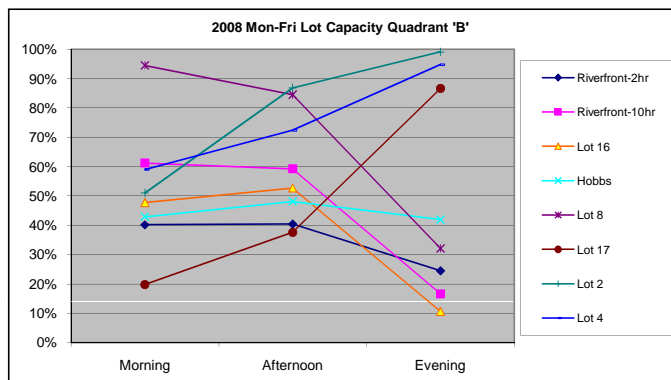
Northwest quadrant 'A' has 416 available parking lot spaces, representing 23% of the total downtown available parking lot spaces.



January 2008-December 2008 (Monday through Friday)

Quadrant 'B'	Morning	Afternoon	Evening
Riverfront-2hr	40%	40%	24%
Riverfront-10hr	61%	59%	17%
Lot 16	48%	53%	11%
Hobbs	43%	48%	42%
Lot 8	94%	85%	32%
Lot 17	20%	38%	87%
Lot 2	51%	87%	99%
Lot 4	59%	72%	95%

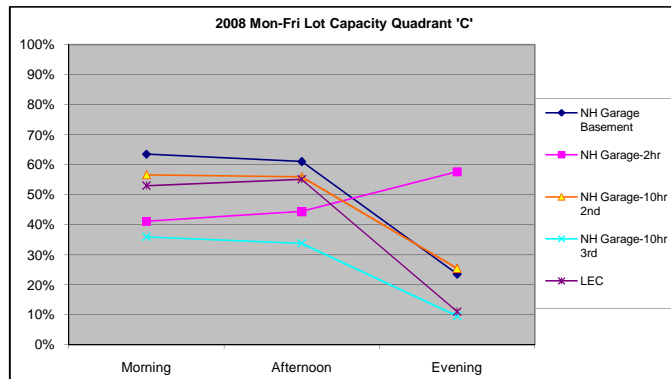
Northeast quadrant 'B' has 721 available parking lot spaces, representing 39% of the total downtown available parking lot spaces.



January 2008-December 2008 (Monday through Friday)

Quadrant 'C'	Morning	Afternoon	Evening
NH Garage Basement	63%	61%	24%
NH Garage-2hr	41%	44%	58%
NH Garage-10hr 2nd	57%	56%	25%
NH Garage-10hr 3rd	36%	34%	10%
LEC	53%	55%	11%

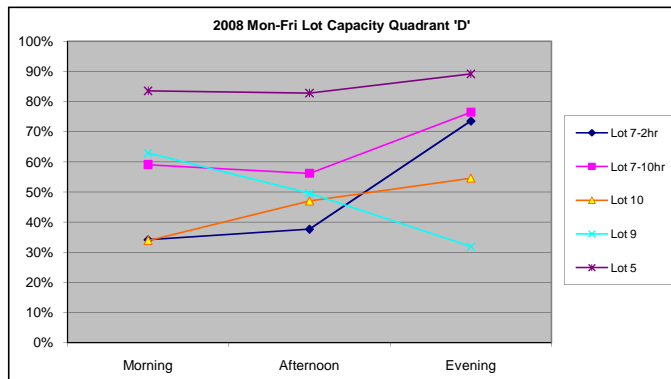
Southeast quadrant 'C' has 487 available parking lot spaces, representing 26% of the total downtown available parking lot spaces.



January 2008-December 2008 (Monday through Friday)

Quadrant 'D'	Morning	Afternoon	Evening
Lot 7-2hr	34%	38%	74%
Lot 7-10hr	59%	56%	76%
Lot 10	34%	47%	55%
Lot 9	63%	50%	32%
Lot 5	84%	83%	89%

Southwest quadrant 'D' has 212 available parking lot spaces, representing 12% of the total downtown available parking lot spaces.



(EXHIBIT-5)

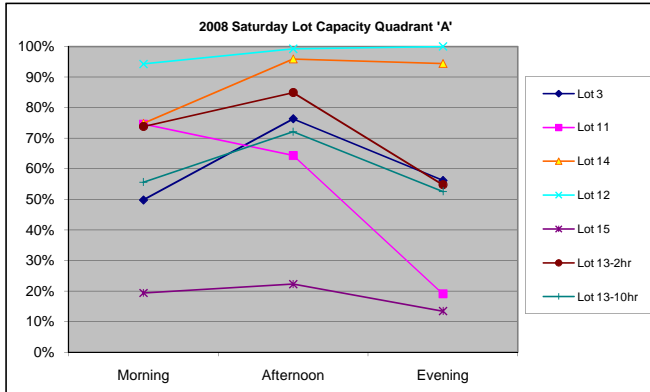
Parking Lot Capacity Graphs: January 2008-December 2008
(Saturday Data)

City of Lawrence Parking Control

January 2008-December 2008 (Saturday)

Quadrant 'A'	Morning	Afternoon	Evening
Lot 3	50%	76%	56%
Lot 11	75%	64%	19%
Lot 14	75%	96%	94%
Lot 12	94%	99%	100%
Lot 15	19%	22%	13%
Lot 13-2hr	74%	85%	55%
Lot 13-10hr	56%	72%	53%

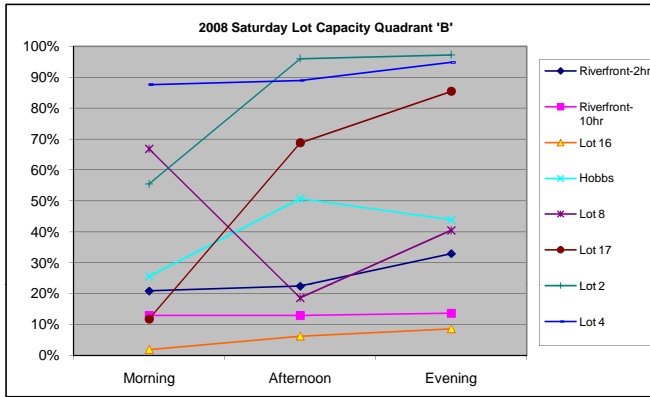
Northwest quadrant 'A' has 416 available parking lot spaces, representing 23% of the total downtown available parking lot spaces.



January 2008-December 2008 (Saturday)

Quadrant 'B'	Morning	Afternoon	Evening
Riverfront-2hr	21%	22%	33%
Riverfront-10hr	13%	13%	14%
Lot 16	2%	6%	9%
Hobbs	26%	51%	44%
Lot 8	67%	19%	40%
Lot 17	12%	69%	85%
Lot 2	55%	96%	97%
Lot 4	88%	89%	95%

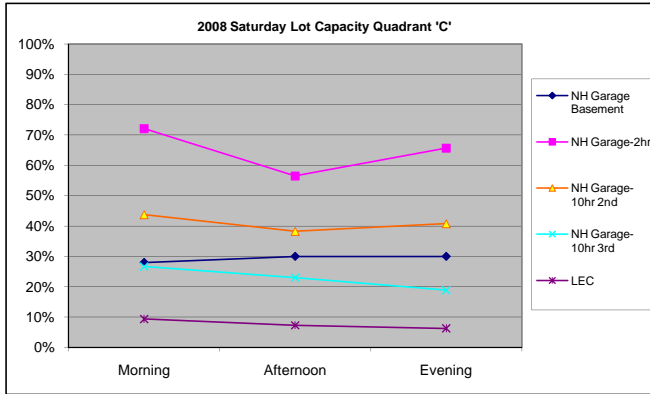
Northeast quadrant 'B' has 721 available parking lot spaces, representing 39% of the total downtown available parking lot spaces.



January 2008-December 2008 (Saturday)

Quadrant 'C'	Morning	Afternoon	Evening
NH Garage Basement	28%	30%	30%
NH Garage-2hr	72%	57%	66%
NH Garage-10hr 2nd	44%	38%	41%
NH Garage-10hr 3rd	27%	23%	19%
LEC	9%	7%	6%

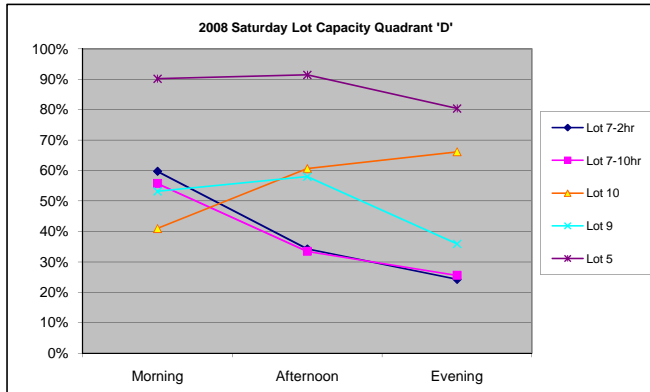
Southeast quadrant 'C' has 487 available parking lot spaces, representing 26% of the total downtown available parking lot spaces.



January 2008-December 2008 (Saturday)

Quadrant 'D'	Morning	Afternoon	Evening
Lot 7-2hr	60%	34%	24%
Lot 7-10hr	56%	33%	26%
Lot 10	41%	61%	66%
Lot 9	53%	58%	36%
Lot 5	90%	91%	80%

Southwest quadrant 'D' has 212 available parking lot spaces, representing 12% of the total downtown available parking lot spaces.



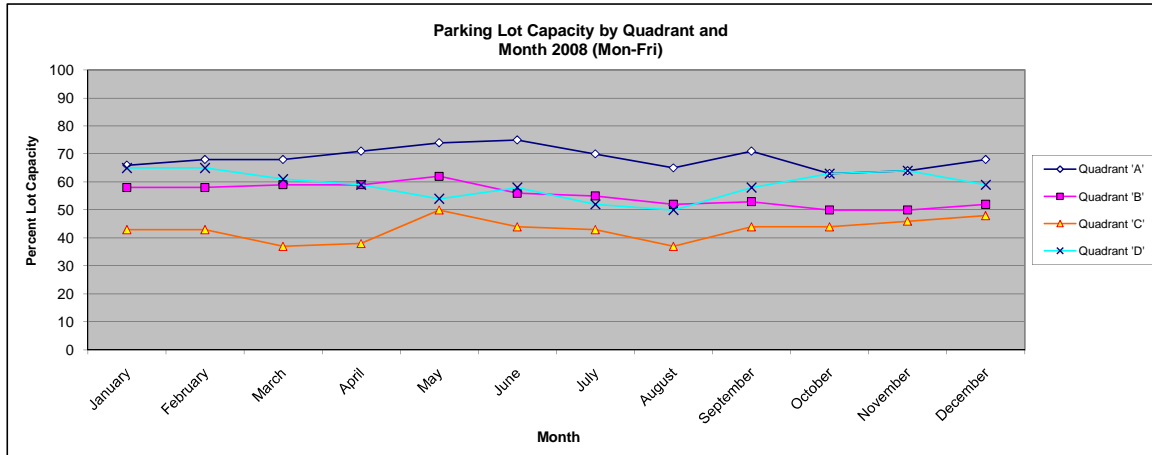
(EXHIBIT-6)

Parking Lot Capacity by Quadrant and Month

January-December 2008

City of Lawrence Parking Control

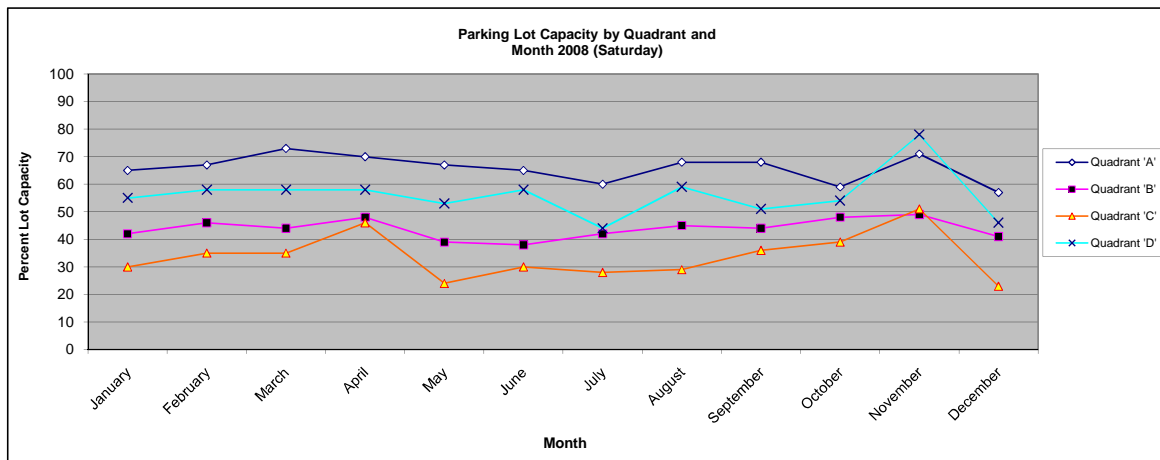
01/20/09 tp



Monday through Friday Data

(January 2008-December 2008)

Month	Quadrant 'A'	Quadrant 'B'	Quadrant 'C'	Quadrant 'D'
January	66	58	43	65
February	68	58	43	65
March	68	59	37	61
April	71	59	38	59
May	74	62	50	54
June	75	56	44	58
July	70	55	43	52
August	65	52	37	50
September	71	53	44	58
October	63	50	44	63
November	64	50	46	64
December	68	52	48	59



Saturday Data

(January 2008-December 2008)

Month	Quadrant 'A'	Quadrant 'B'	Quadrant 'C'	Quadrant 'D'
January	65	42	30	55
February	67	46	35	58
March	73	44	35	58
April	70	48	46	58
May	67	39	24	53
June	65	38	30	58
July	60	42	28	44
August	68	45	29	59
September	68	44	36	51
October	59	48	39	54
November	71	49	51	78
December	57	41	23	46

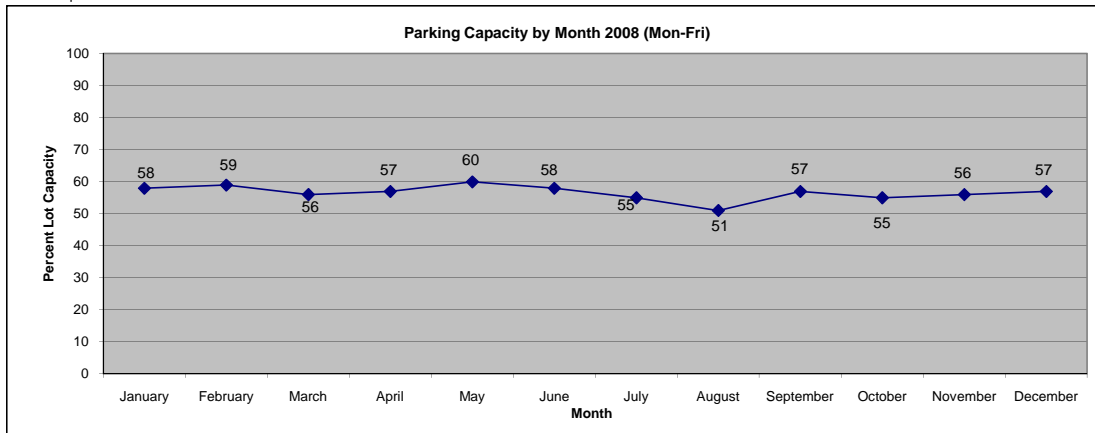
(EXHIBIT-7)

Downtown Parking Lot Capacity by Month 2008

January-December 2008

City of Lawrence Parking Control

01/20/09 tp

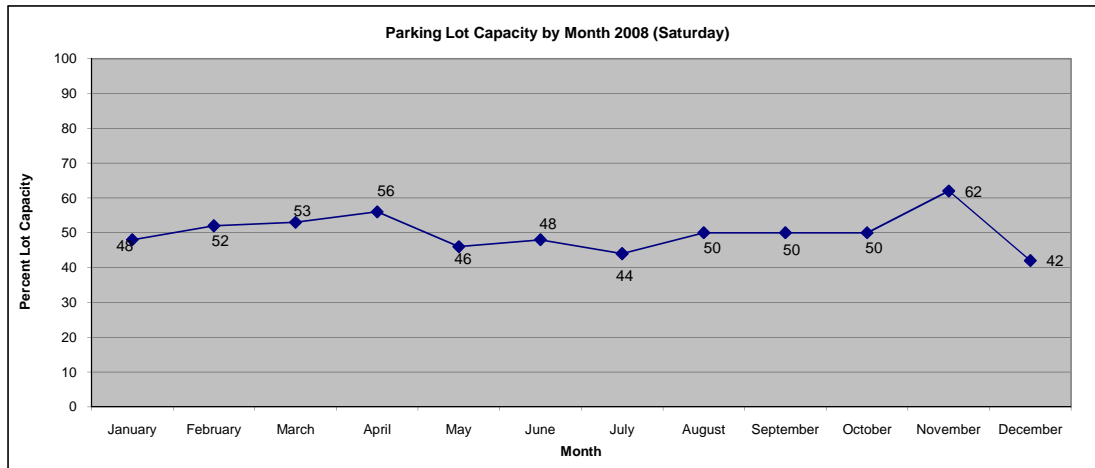


Monday through Friday Data

(January 2008-December 2008)

Month	Quadrant 'A'	Quadrant 'B'	Quadrant 'C'	Quadrant 'D'
January	66	58	43	65
February	68	58	43	65
March	68	59	37	61
April	71	59	38	59
May	74	62	50	54
June	75	56	44	58
July	70	55	43	52
August	65	52	37	50
September	71	53	44	58
October	63	50	44	63
November	64	50	46	64
December	68	52	48	59

Month	Average
January	58
February	59
March	56
April	57
May	60
June	58
July	55
August	51
September	57
October	55
November	56
December	57



Saturday Data

(January 2008-December 2008)

Month	Quadrant 'A'	Quadrant 'B'	Quadrant 'C'	Quadrant 'D'
January	65	42	30	55
February	67	46	35	58
March	73	44	35	58
April	70	48	46	58
May	67	39	24	53
June	65	38	30	58
July	60	42	28	44
August	68	45	29	59
September	68	44	36	51
October	59	48	39	54
November	71	49	51	78
December	57	41	23	46

Month	Average
January	48
February	52
March	53
April	56
May	46
June	48
July	44
August	50
September	50
October	50
November	62
December	42