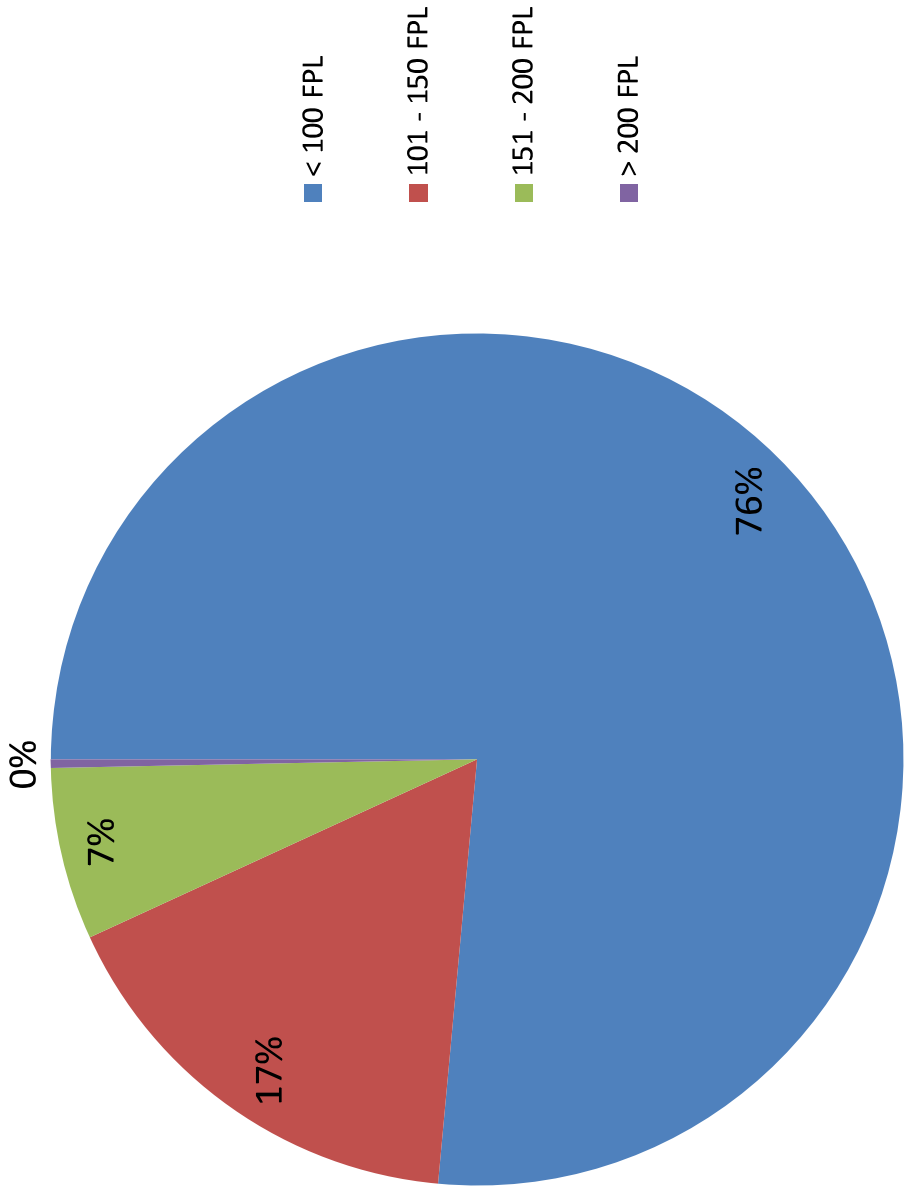
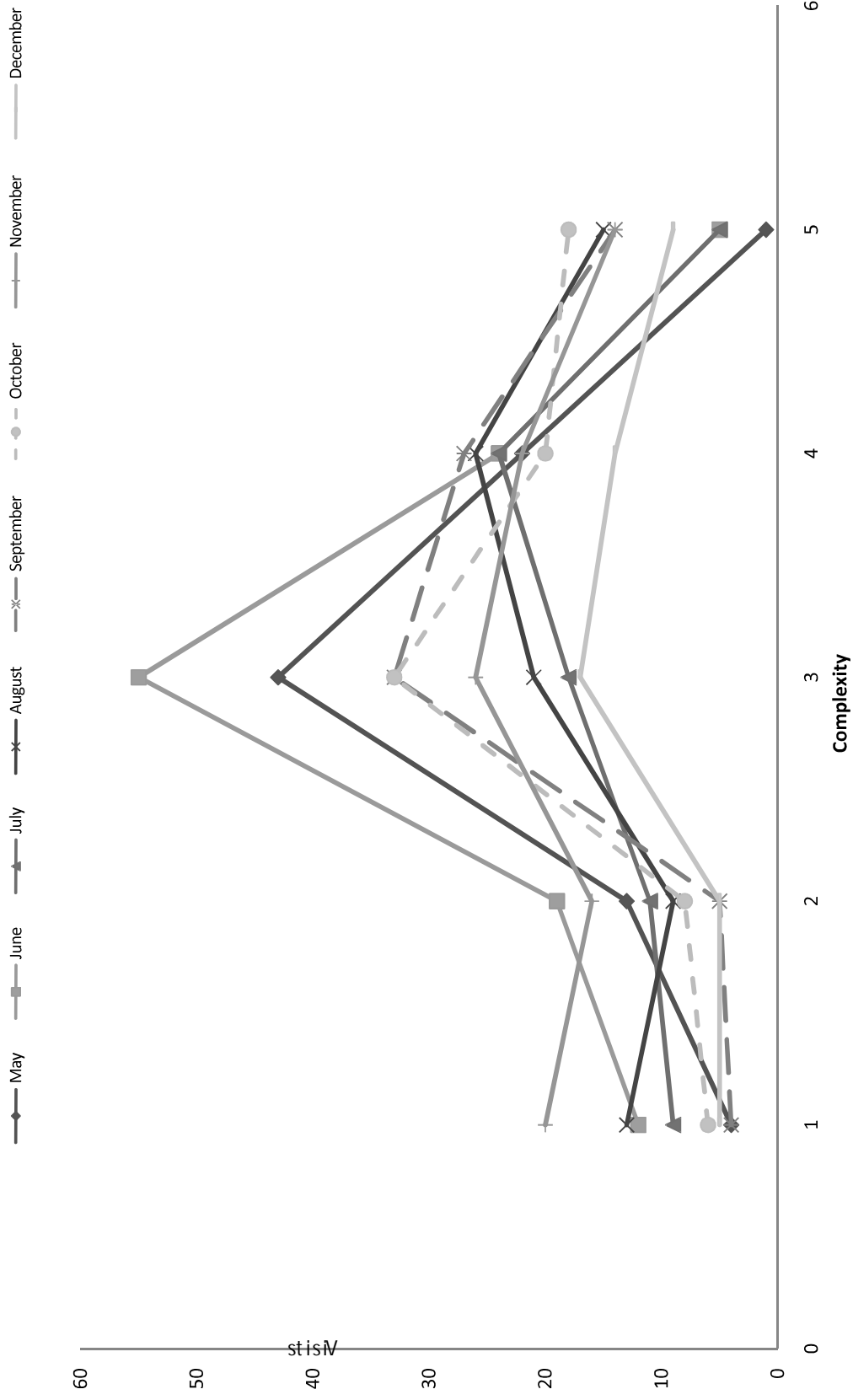


**Health Care Access Clinic  
Report to Lawrence City Commission  
March 4, 2008**

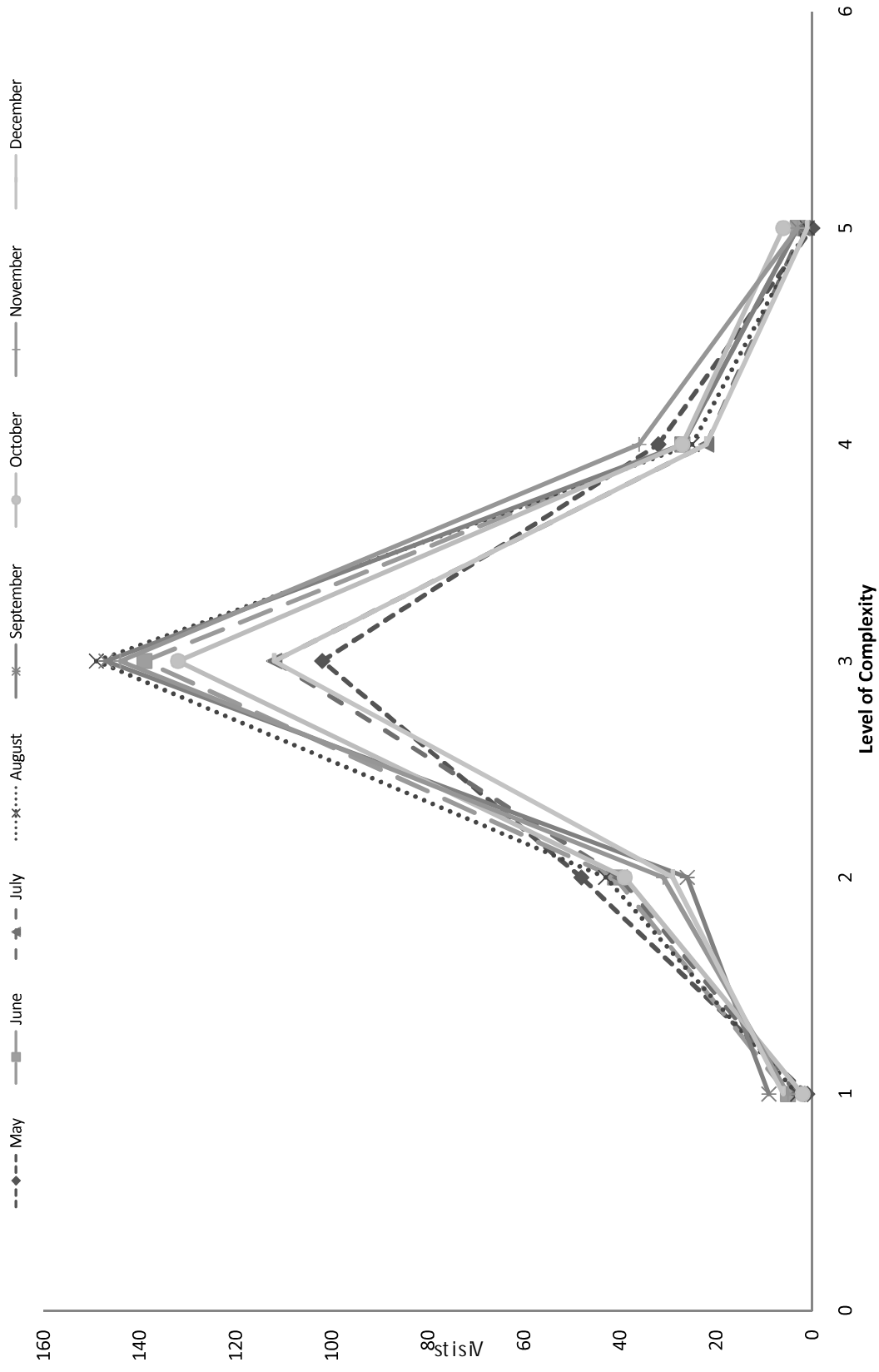
Users by Income Level



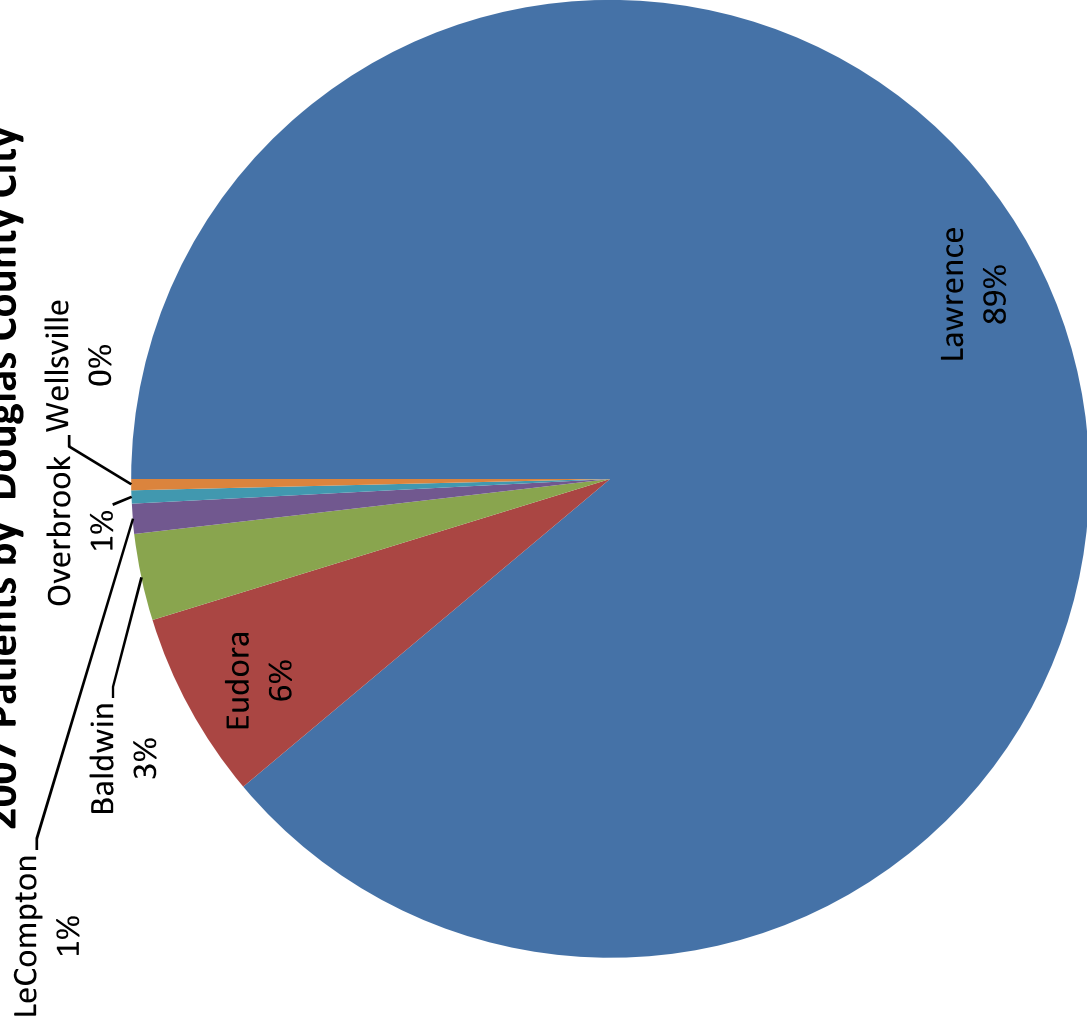
Complexity of New Patient Visits by Month



# Complexity of Established Patient Visits by Month

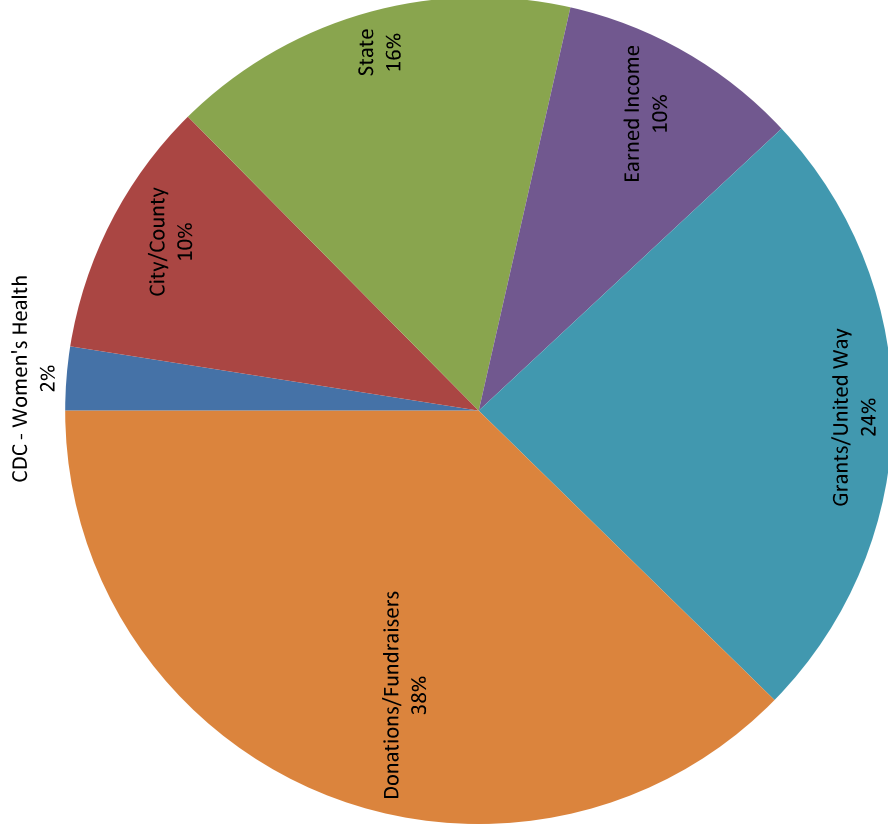


## 2007 Patients by Douglas County City

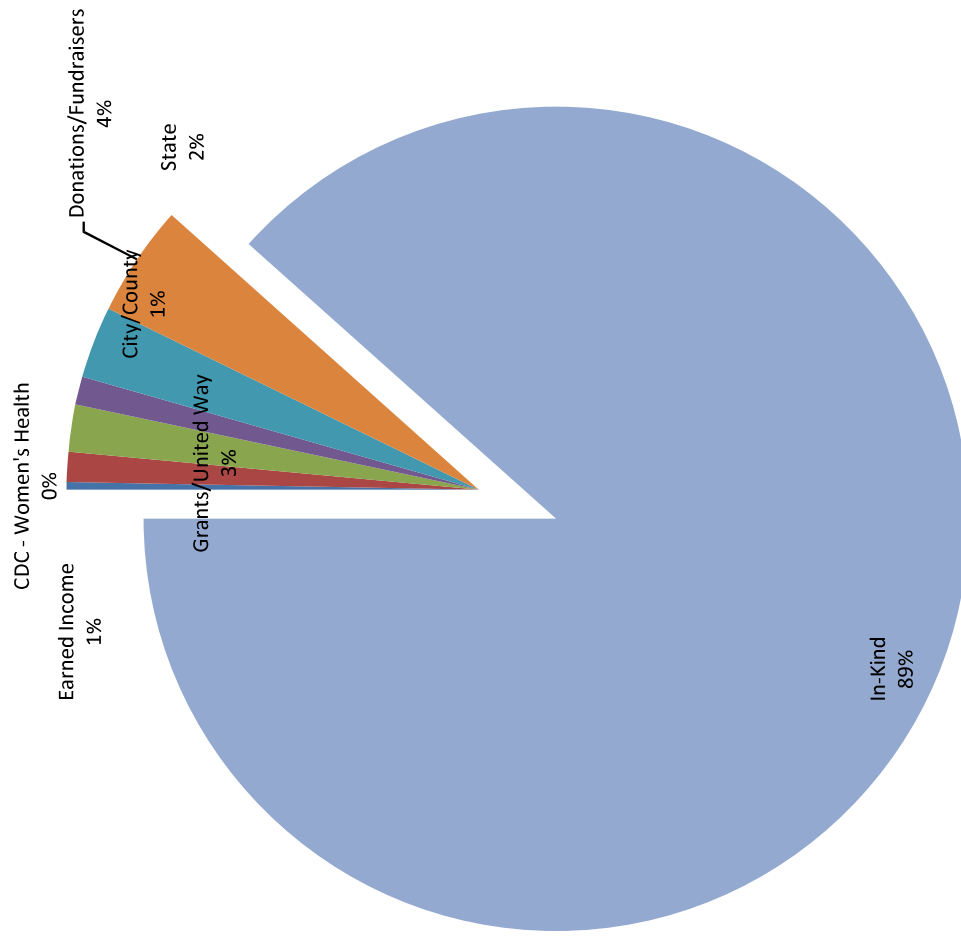


## 2007 Revenue - Health Care Access Clinic (Lawrence, KS)

**\$504,148**



## 2007 Revenue & In-Kind Value - Health Care Access Clinic (Lawrence, KS) \$4.34 million



Health Care Access Clinic Patient and Visit Trend

