



CITY OF LAWRENCE, KANSAS
SCHOOL CROSSING CONTROL POLICY

Resolution No. 5777, March 19, 1996

Resolution No. 6604, August 16, 2005

Resolution No. XXXX, December XX, 2007

- Premises:
1. Traffic control signs, markings, and signals (other than School Advance and School Crossing signs, and Marked Crosswalks) will be provided for elementary students only. Junior and senior high students are capable of walking to-and-from school without special assistance from adults or traffic control devices.
 2. In order to consider an adult guard or other traffic control device, the number of children using a crossing during the crossing period must average at least 10 during either the morning or afternoon crossing period. The crossing periods to be studied shall be the 45 minutes prior to the beginning of school and the 30 minutes after school dismissal, in 5-minute increments. A minimum of 3 morning and/or 3 afternoon studies will be conducted to determine the average number of children.

SCHOOL ADVANCE SIGN

A School Advance Sign may be provided on each approach of each street adjacent to a school and in advance of every marked school crosswalk that is not adjacent to a school.

MARKED CROSSWALKS

A marked crosswalk may be provided at crossings adjacent to school property, and at other locations where the following minimum requirements are met: vehicles enter the crosswalk (without being required to stop) at a rate exceeding 150 vehicles per hour during any 5-minute increment of the morning or afternoon crossing period. Marked crosswalks shall be limited to one per street per school when practical. Unprotected crosswalks (absence of stop sign, traffic signal or adult crossing guard) may be marked if required by a school route plan or, if a school route plan does not exist, it is not practical for children to use a protected crosswalk.

REDUCED SPEED ZONE (20 MPH)

A reduced speed zone may be provided for each marked school crosswalk that is not protected by a stop sign, traffic signal or adult crossing guard. The reduced speed zone shall begin approximately 150-200 feet in advance of the crosswalk and shall end approximately 50-100 feet beyond the crosswalk. The reduced speed zone shall be in effect at times provided in the *Code of the City of Lawrence*. Any signs installed under this provision will be removed upon installation of a stop sign, traffic signal or adult crossing guard under other provisions of this policy.

ITEM NO. 3_12.3.07 TSC AGENDA

REDUCED SPEED ZONE (20 MPH) WITH FLASHING BEACON

A reduced speed zone with flashing beacon may be provided for each marked school crosswalk that is not protected by a stop sign or traffic signal, if the following minimum requirements are met: the average number of students exceeds 40 and the available safe gaps in the traffic is greater than 1.5 per minute; or if the average number of students is 10 or greater and the available safe gaps in the traffic is 1.0-1.5 per minute. The reduced speed zone shall begin approximately 150-200 feet in advance of the crosswalk and shall end approximately 50-100 feet beyond the crosswalk. The reduced speed zone shall be in effect for 45 minutes prior to the beginning of school and for 30 minutes after the end of school. Any beacons installed under this provision will be removed upon installation of a stop sign or traffic signal under other provisions of this policy.

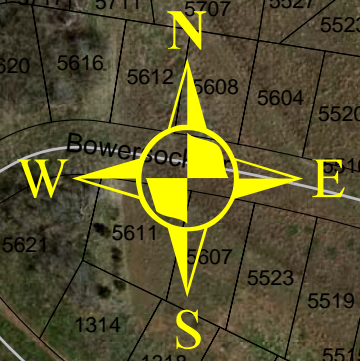
STOP SIGN AND TRAFFIC SIGNAL

A Stop Sign or Traffic Signal will only be provided in accordance with criteria established in the *Manual on Uniform Traffic Control Devices*, as published by the Federal Highway Administration, and adopted by the State of Kansas and the City of Lawrence.

ADULT CROSSING GUARD

An Adult Crossing Guard may be provided if any of the following minimum conditions are met:

1. At an unprotected marked crosswalk if:
 - (a) the average number of students exceeds 40 and the available safe gaps in the traffic is 1.0-1.5 per minute; or
 - (b) if the average number of students is 10 or greater and
 - (1) the speed limit on the street is over 35mph, or
 - (2) the street is marked for more than 3 lanes of traffic, or
 - (3) the product of the crossing time (in seconds) and the speed limit for approaching traffic (in feet per second) is equal to or larger than the measured sight distance, or
 - (4) the available safe gaps in the traffic is less than 1.0 per minute.
2. At a marked crosswalk protected by a Stop Sign (not an all-way stop) or a Traffic Signal, if the average number of students is 30 or greater, and
 - (a) the street is marked for 4 lanes or more lanes of traffic and vehicles enter the crosswalk without being required to stop at a rate exceeding 150 vehicles per hour during any 5-minute increment of the morning or afternoon crossing period, or
 - (b) the street is marked for less than 4 lanes of traffic and vehicles enter the crosswalk without being required to stop at a rate exceeding 300 vehicles per hour during any 5-minute increment of the morning or afternoon crossing period.
3. At a marked crosswalk at an All-Way Stop if the average number of students is 10 or greater and the all-way stop is warranted during the crossing period.



Speed Limit = 45 mph
Pedestrian crossing time = 24 sec.
Vehicle travel distance = 1584 ft.



CITY OF LAWRENCE, KANSAS SCHOOL CROSSING CONTROL POLICY

Resolution No. 5777, March 19, 1996

Resolution No. 6604, August 16, 2005

Resolution No. XXXX, January XX, 2008

- Premises:
1. Traffic control signs, markings, and signals (other than School Advance and School Crossing signs, and Marked Crosswalks) will be provided for elementary students only. Junior and senior high students are capable of walking to-and-from school without special assistance from adults or traffic control devices.
 2. In order to consider an adult guard or other traffic control device, the number of children using a crossing during the crossing period must average at least 10 during either the morning or afternoon crossing period. The crossing periods to be studied shall be the 45 minutes prior to the beginning of school and the 30 minutes after school dismissal, in 5-minute increments. A minimum of 3 morning and/or 3 afternoon studies will be conducted to determine the average number of children.

SCHOOL ADVANCE SIGN

A School Advance Sign may be provided on each approach of each street adjacent to a school and in advance of every marked school crosswalk that is not adjacent to a school.

MARKED CROSSWALKS

A marked crosswalk may be provided at crossings adjacent to school property, and at other locations where the following minimum requirements are met: vehicles enter the crosswalk (without being required to stop) at a rate exceeding 150 vehicles per hour during any 5-minute increment of the morning or afternoon crossing period. Marked crosswalks shall be limited to one per street per school when practical. Unprotected crosswalks (absence of stop sign, traffic signal or adult crossing guard) may be marked if required by a school route plan or, if a school route plan does not exist, it is not practical for children to use a protected crosswalk.

REDUCED SPEED ZONE (20 MPH)

A reduced speed zone may be provided for each marked school crosswalk that is not protected by a stop sign, traffic signal or adult crossing guard. The reduced speed zone shall begin approximately 150-200 feet in advance of the crosswalk and shall end approximately 50-100 feet beyond the crosswalk. The reduced speed zone shall be in effect at times provided in the *Code of the City of Lawrence*. Any signs installed under this provision will be removed upon installation of a stop sign, traffic signal or adult crossing guard under other provisions of this policy.

REDUCED SPEED ZONE (20 MPH) WITH FLASHING BEACON

A reduced speed zone with flashing beacon may be provided for each marked school crosswalk that is not protected by a stop sign or traffic signal, if the following minimum requirements are met: the average number of students exceeds 40 and the available safe gaps in the traffic is greater than 1.5 per minute; or if the average number of students is 10 or greater and the available safe gaps in the traffic is 1.0-1.5 per minute. The reduced speed zone shall begin approximately 150-200 feet in advance of the crosswalk and shall end approximately 50-100 feet beyond the crosswalk. The reduced speed zone shall be in effect for 45 minutes prior to the beginning of school and for 30 minutes after the end of school. Any beacons installed under this provision will be removed upon installation of a stop sign or traffic signal under other provisions of this policy.

STOP SIGN AND TRAFFIC SIGNAL

A Stop Sign or Traffic Signal will only be provided in accordance with criteria established in the *Manual on Uniform Traffic Control Devices*, as published by the Federal Highway Administration, and adopted by the State of Kansas and the City of Lawrence.

ADULT CROSSING GUARD

An Adult Crossing Guard may be provided if any of the following minimum conditions are met:

1. At an unprotected **marked** crosswalk if:
 - (a) the average number of students exceeds 40 and the available safe gaps in the traffic is 1.0-1.5 per minute; or
 - (b) if the average number of students is 10 or greater and
 - (1) the speed limit on the street is over 35mph, or
 - (2) the street is marked for more than 3 lanes of traffic, or
 - (3) the product of the crossing time (in seconds) and the speed limit for approaching traffic (in feet per second) is equal to or larger than the measured sight distance, or
 - (4) the available safe gaps in the traffic is less than 1.0 **per minute**.
2. At a **marked** crosswalk protected by a Stop Sign (not an all-way stop) or a Traffic Signal, if the average number of students is 30 or greater, and
 - (a) the street is marked for 4 lanes or more lanes of traffic and vehicles enter the crosswalk without being required to stop at a rate exceeding 150 vehicles per hour during any 5-minute increment of the morning or afternoon crossing period, or
 - (b) the street is marked for less than 4 lanes of traffic and vehicles enter the crosswalk without being required to stop at a rate exceeding 300 vehicles per hour during any 5-minute increment of the morning or afternoon crossing period.
3. At a **marked** crosswalk at an All-Way Stop if the average number of students is 10 or greater and the all-way stop is warranted during the crossing period.