

Parking Lot Capacity Report

January 2007- October 2007

City of Lawrence Parking Control

Introduction

The downtown City of Lawrence has nineteen parking lots for short and long-term parking. The purpose of this project was to track the capacity of the parking lots at various times throughout the day. This report is the result of weekly data gathered January 2007 through October 2007. The Parking Control staff gathered parking lot capacity counts approximately seven days a month, with three to four counts a day.

**Separately displayed is the weekday data vs. weekend data throughout this report.*

Lawrence Parking Map

(Exhibit-1) is a map of the downtown parking lots for the City of Lawrence. For ease in showing the parking capacity trends, the downtown will be referred to in quadrants separated North and South by 9th Street, and East and West by Massachusetts Street:

Quadrant 'A' - Northwest	416	available spaces =	23%
Quadrant 'B' - Northeast	710	available spaces =	39%
Quadrant 'C' - Southeast	487	available spaces =	26%
Quadrant 'D' - Southwest	<u>212</u>	available spaces =	<u>12%</u>
	1825		100%

Metered and Non-Metered Parking Lots Table

(Exhibit-2) is a table of the parking lots and their corresponding available spaces. The data for this report did not include capacity counts for the reserved parking spaces in the Riverfront Garage, New Hampshire Garage, and City Lot 7.

Quadrant Spaces vs. Quadrant Capacity Graphs

The graphs below show the percent of parking spaces available for each quadrant and the actual average vehicle capacity per quadrant, in relation to the downtown as a whole. *(There is never 100% of vehicles downtown at one time to take up every space available.)*

Quadrant 'A' represents 23% of the downtown available lot space, but held 32% of the vehicles parking during the weekdays and 32% of the vehicles on the weekends. This is an indicator that this area of downtown has a higher demand of spaces compared to other quadrants, although at a 75% vehicle average capacity during the weekdays, there were still spaces available. From January to October 2007, Quadrant 'A' averaged a 75% capacity of parked vehicles during the weekdays and 62% on the weekends.

Quadrant 'B' represents 39% of the downtown available lot space but held 25% of the vehicles parked during the weekdays and 24% of the vehicles on the weekends. This area of downtown has more spaces available during the weekdays and weekends compared to any other quadrant in the city. From January to October 2007, Quadrant 'B' averaged a 58% capacity of parked vehicles during the weekdays and 47% on the weekends.

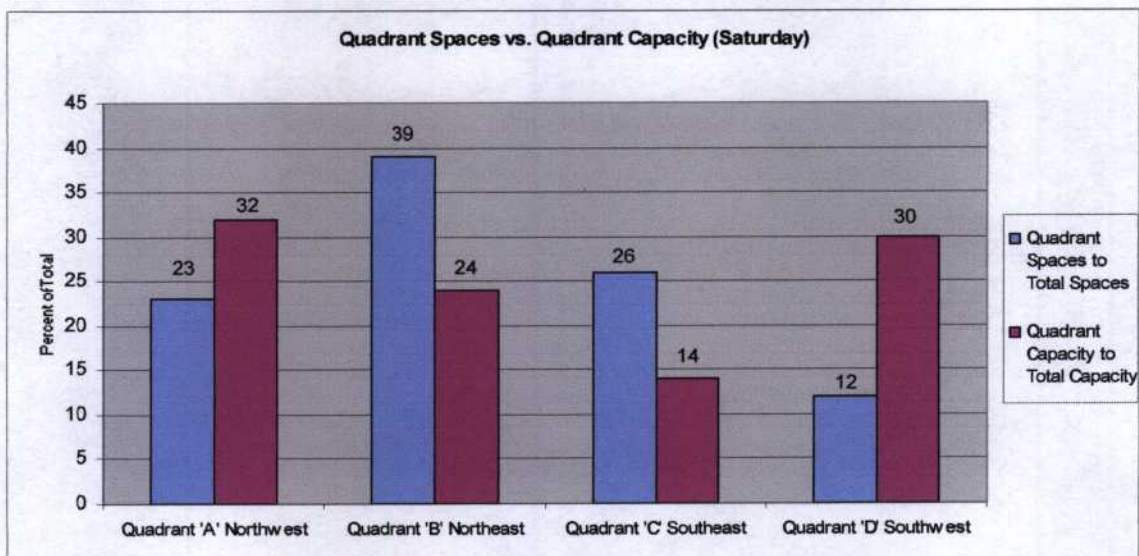
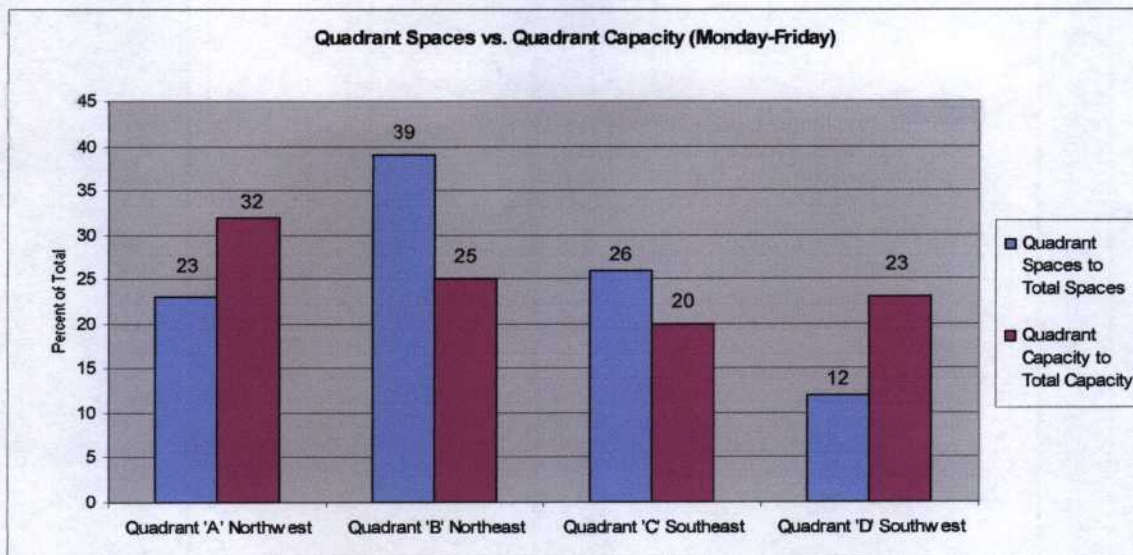
**As shown in (Exhibits-5 & 6), quadrant 'B' has Lots 2 & 4 that maintain a 75%-100% capacity of vehicles during the afternoon and evening hours, both during the weekdays and weekends. Lot 8 maintains near 100% vehicle capacity during the weekdays. Lot 8 is also the location for the Farmer's Market on Saturday morning, which increased the vehicle capacity during the market season. In the evenings Lot 8 drops to a 20% vehicle capacity.*

Quadrant 'C' represents 26% of the downtown available lot space but held 20% of the vehicles parked during the weekdays and 14% of the vehicles on the weekends. From January to October 2007, Quadrant 'C' averaged a 47% capacity of parked vehicles during the weekdays and 27% on the weekends.

**Quadrant 'C' is host to the New Hampshire parking garage. The third floor does not exceed a 6% vehicle average and more accurately stays at about 4%. While most of quadrant 'C' dips to a low 20% capacity of parked vehicles in the evening, the first floor (street level) of the NH Garage increases about 10% during the evening hours.*

Quadrant 'D' represents 12% of the downtown available lot space but held 23% of the vehicles parked during the weekdays and 30% of the vehicles on the weekends. From January to October 2007, Quadrant 'D' averaged a 53% capacity of parked vehicles during the weekdays and 57% on the weekends.

**Lot 5 maintains a 70%-92% parking capacity at all times.*



Locations of High Parking Traffic

Worth noting are the Lots in downtown that have a high volume of parked vehicles at all times. These are City lots that border the back of businesses on Massachusetts Street.

In quadrant 'A', parking lots 12 & 14, in the 700 block of Vermont Street, maintain an 80%-100% capacity in the afternoon and evening.

In quadrant 'B', parking lots 2 & 4, in the 700 and 800 block of New Hampshire Street respectively, maintain a 76%-100% capacity in the afternoon and evening.

In quadrant 'D', parking lot 5, in the 900 block of Vermont Street, maintains an 80%-92% capacity at all times of the day.

Parking Lot Capacity Data and Graph
(Monday-Friday Data Table)

(Exhibit-3) is a data table showing the average number of vehicles for each lot by morning, afternoon, and evening car counts, and the corresponding percentages. Below the table is a graph of the data. This exhibit is Monday-Friday data only.

Parking Lot Capacity Data and Graph
(Saturday Data Table)

(Exhibit-4) is a data table showing the average number of vehicles for each lot by morning, afternoon, and evening car counts, and the corresponding percentages. Below the table is a graph of the data table. This exhibit is Saturday data only.

Parking Lot Capacity Graphs by Lot Number
(Monday-Friday Graphs)

(Exhibit-5) is a graph charting all of the City Lots separated by morning, afternoon, and evening parking capacities. The graphs are separated by downtown quadrants. This exhibit is Monday-Friday data only.

Parking Lot Capacity Graphs by Lot Number
(Saturday Graphs)

(Exhibit-6) is a graph charting all of the City Lots separated by morning, afternoon, and evening parking capacities. The graphs are separated by downtown quadrants. This exhibit is Saturday data only.

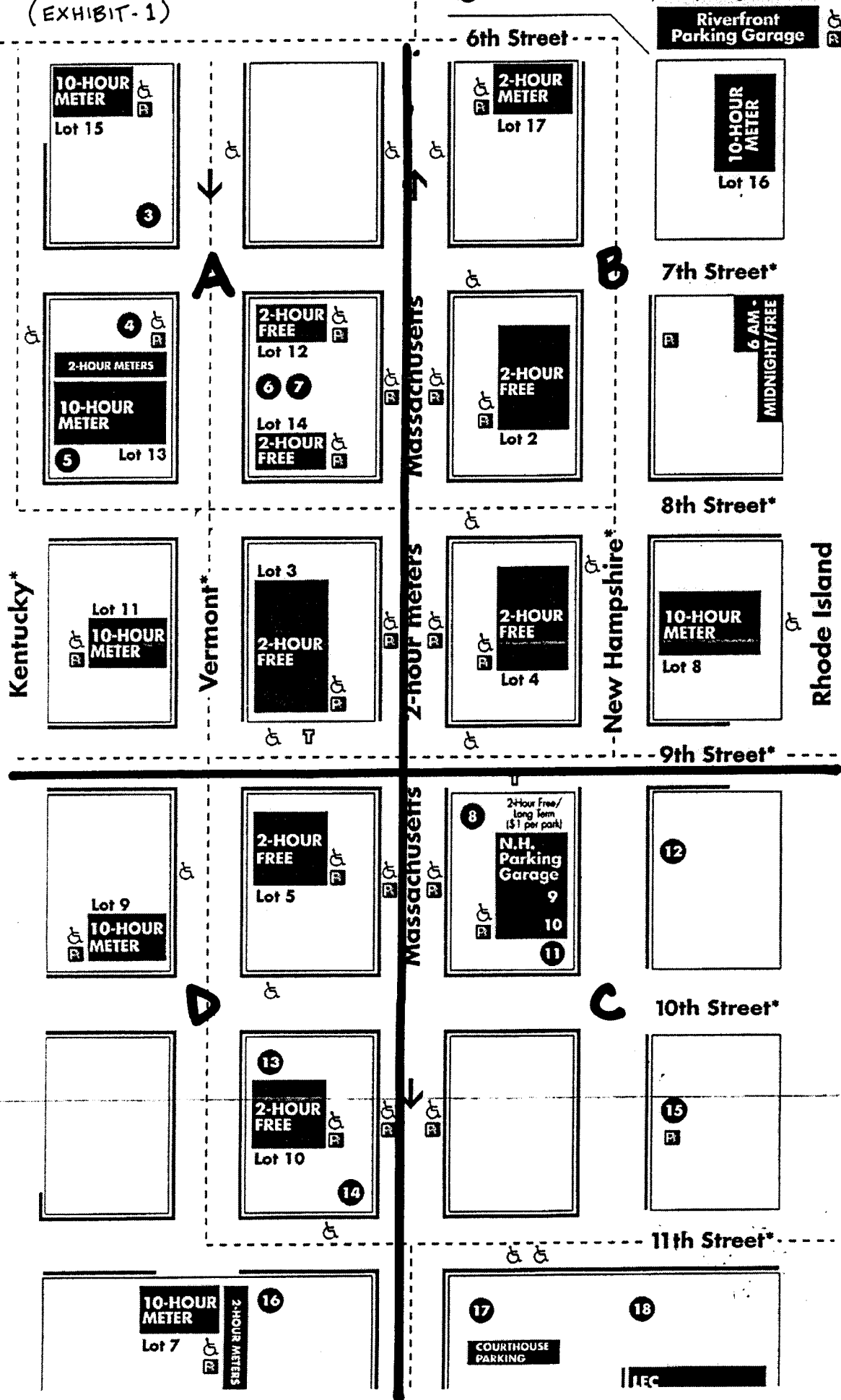
Parking Lot Total Capacity Graphs by Quadrant and Month
(Monday-Friday, and Saturday Graphs)

(Exhibit-7) are graphs charting the average capacity of the four downtown quadrants by month.
(January 2007-October 2007)

Parking Lot Total Capacity Graphs by Month
(Monday-Friday, and Saturday Graphs)

(Exhibit-8) are graphs charting the average parking lot capacity by month.
(January 2007-October 2007)

(EXHIBIT-1)

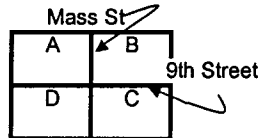


(EXHIBIT-2)

Metered and Non-metered Parking Lots
Downtown - Lawrence, Kansas

**Downtown quadrants are separated north and south by 9th Street, and east and west by Massachusetts Street.*

Quadrant 'A' -Northwest
 Quadrant 'B' -Northeast
 Quadrant 'C' -Southeast
 Quadrant 'D' -Southwest



City Lot	Quad	Location	30 min meters	2-hr meters	10-hr meters	2-hr non- metered	10-hr non- metered	Reserved City & Private	Handi- capped	Total Lot Spaces	Total Lot Spaces per Quadrant	
15	A	600 block Vermont			35				1	36	416	Quadrant 'A' Northwest
13	A	700 block Vermont	3	31	78				5	117		
12	A	700 block Vermont				26			1	27		
14	A	700 block Vermont				34			2	36		
11	A	800 block Vermont			30				2	32		
3	A	800 block Vermont				162			6	168	859	Quadrant 'B' Northeast
17	B	600 block New Hamp		23					2	25		
Riverfront	B	600 block New Hamp				120	197	149	12	478		
16	B	600 block Rhode Is			43					43		
2	B	700 block New Hamp				70			2	72		
Hobbs	B	700 block New Hamp			25		24		4	53		
4	B	800 block New Hamp				83			3	86		
8	B	800 block New Hamp			97				5	102	509	Quadrant 'C' Southeast
NH Garage	C	900 block New Hamp				201	257	22	13	493		
LEC	C	1200 block Mass		14					2	16		
9	D	900 block Vermont			36				2	38	213	Quadrant 'D' Southwest
5	D	900 block Vermont				59			4	63		
7	D	1100 block Vermont		9	34			1	3	47		
10	D	1000 block Vermont				61			4	65		
Total Lot Spaces										1997		

Parking Lot Capacity Data: January 2007-October 2007
(Monday through Friday Data)

City of Lawrence Parking Control

rev. 11/10/07 tp

Lot number	Lot Location	Town Quadrant	Total Spaces Available	Mornings		Afternoons		Evenings	
				Average # Cars Mornings Mon-Fri	Percent Capacity Mornings Mon-Fri	Average # Cars Afternoons Mon-Fri	Percent Capacity Afternoons Mon-Fri	Average # Cars Evenings Mon-Fri	Percent Capacity Evenings Mon-Fri
Lot 3	800 blk VT	A-northwest	168	73	43%	103	61%	53	32%
Lot 11	800 blk VT	A-northwest	32	24	75%	22	69%	1	3%
Lot 14	8th & VT	A-northwest	36	31	86%	33	92%	32	89%
Lot 12	7th & VT	A-northwest	27	22	81%	25	93%	26	96%
Lot 15	6th & VT	A-northwest	36	25	69%	25	69%	5	14%
Lot 13-2hr	700 blk VT	A-northwest	39	26	67%	30	77%	20	51%
Lot 13-10hr	700 blk VT	A-northwest	78	62	79%	66	85%	30	38%
Riverfront-2hr	6th & NH	B-northeast	133	62	47%	74	56%	41	31%
Riverfront-10hr	6th & NH	B-northeast	197	143	73%	151	77%	39	20%
Lot 16	7th & Rhode	B-northeast	43	22	51%	25	58%	5	12%
Hobbs-10hr	700 blk NH	B-northeast	25	11	44%	13	52%	5	20%
Lot 8	800 blk NH	B-northeast	102	93	91%	90	88%	19	19%
Lot 17	6th & NH	B-northeast	25	5	20%	10	40%	14	56%
Lot 2	700 blk NH	B-northeast	72	34	47%	55	76%	71	99%
Lot 4	800 blk NH	B-northeast	86	58	67%	66	77%	75	87%
NH Garage Basement	900 blk NH	C-southeast	105	74	70%	72	69%	18	17%
NH Garage-2hr	900 blk NH	C-southeast	103	53	51%	53	51%	63	61%
NH Garage-10hr 2nd	900 blk NH	C-southeast	128	95	74%	89	70%	26	20%
NH Garage-10hr 3rd	900 blk NH	C-southeast	135	6	4%	8	6%	1	1%
LEC	Park St N	C-southeast	16	9	56%	10	63%	3	19%
Lot 7-2hr	11th & VT	D-southwest	9	4	44%	4	44%	6	67%
Lot 7-10hr	11th & VT	D-southwest	37	22	59%	18	49%	16	43%
Lot 10	1000 blk VT	D-southwest	65	18	28%	23	35%	18	28%
Lot 9	900 blk VT	D-southwest	38	26	68%	21	55%	13	34%
Lot 5	900 blk VT	D-southwest	63	53	84%	51	81%	58	92%

Mon-Fri

Quadrant A - Northwest

Lot Capacity AM- 72%

Lot Capacity PM- 78%

Lot Capacity Evenings- 46%

Mon-Fri

Quadrant B - Northeast

Lot Capacity AM- 54%

Lot Capacity PM- 65%

Lot Capacity Evenings- 43%

Mon-Fri

Quadrant C - Southeast

Lot Capacity AM- 51%

Lot Capacity PM- 52%

Lot Capacity Evenings- 24%

Mon-Fri

Quadrant D - Southwest

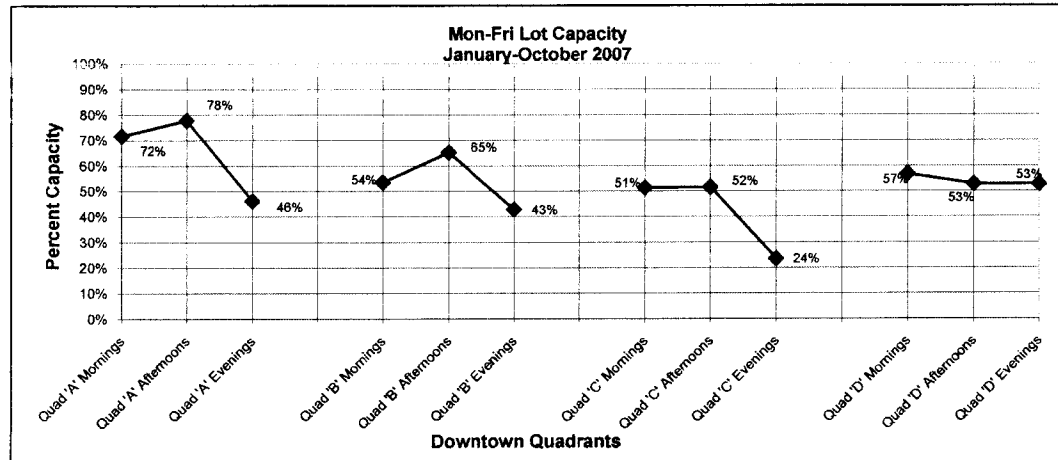
Lot Capacity AM- 57%

Lot Capacity PM- 53%

Lot Capacity Evenings- 53%

Lot Capacity: Jan-Oct 2007
(Monday through Friday Data)

Quad 'A' Mornings	72%
Quad 'A' Afternoons	78%
Quad 'A' Evenings	46%
Quad 'B' Mornings	54%
Quad 'B' Afternoons	65%
Quad 'B' Evenings	43%
Quad 'C' Mornings	51%
Quad 'C' Afternoons	52%
Quad 'C' Evenings	24%
Quad 'D' Mornings	57%
Quad 'D' Afternoons	53%
Quad 'D' Evenings	53%



(EXHIBIT-4)

Parking Lot Capacity Data: January 2007-October 2007**(Saturday Data)**

City of Lawrence Parking Control

rev. 11/10/07 lp

Lot number	Lot Location	Town Quadrant	Total Spaces Available	Mornings		Afternoons		Evenings	
				Average # Cars Mornings Saturday	Percent Capacity Mornings Saturday	Average # Cars Afternoons Saturday	Percent Capacity Afternoons Saturday	Average # Cars Evenings Saturday	Percent Capacity Evenings Saturday
Lot 3	800 blk VT	A-northwest	168	76	45%	118	70%	42	25%
Lot 11	800 blk VT	A-northwest	32	20	63%	19	59%	1	3%
Lot 14	8th & VT	A-northwest	36	20	56%	35	97%	36	100%
Lot 12	7th & VT	A-northwest	27	26	96%	27	100%	27	100%
Lot 15	6th & VT	A-northwest	36	3	8%	10	28%	0	0%
Lot 13-2hr	700 blk VT	A-northwest	39	20	51%	30	77%	3	8%
Lot 13-10hr	700 blk VT	A-northwest	78	42	54%	60	77%	27	35%
Riverfront-2hr	6th & NH	B-northeast	133	25	19%	57	43%	70	53%
Riverfront-10hr	6th & NH	B-northeast	197	33	17%	69	35%	78	40%
Lot 16	7th & Rhode	B-northeast	43	2	5%	12	28%	3	7%
Hobbs-10hr	700 blk NH	B-northeast	25	5	20%	9	36%	2	8%
Lot 8	800 blk NH	B-northeast	102	85	83%	34	33%	17	17%
Lot 17	6th & NH	B-northeast	25	3	12%	16	64%	0	0%
Lot 2	700 blk NH	B-northeast	72	36	50%	66	92%	72	100%
Lot 4	800 blk NH	B-northeast	86	79	92%	74	86%	73	85%
NH Garage Basement	900 blk NH	C-southeast	127	29	23%	45	35%	31	24%
NH Garage-2hr	900 blk NH	C-southeast	103	61	59%	63	61%	74	72%
NH Garage-10hr 2nd	900 blk NH	C-southeast	128	48	38%	63	49%	29	23%
NH Garage-10hr 3rd	900 blk NH	C-southeast	135	7	5%	6	4%	2	1%
LEC	Park St N	C-southeast	16	0	0%	3	19%	0	0%
Lot 7-2hr	11th & VT	D-southwest	9	4	44%	5	56%	1	11%
Lot 7-10hr	11th & VT	D-southwest	37	14	38%	15	41%	2	5%
Lot 10	1000 blk VT	D-southwest	65	26	40%	31	48%	26	40%
Lot 9	900 blk VT	D-southwest	38	24	63%	28	74%	11	29%
Lot 5	900 blk VT	D-southwest	63	58	92%	57	90%	45	71%

Saturday**Quadrant A - Northwest**

Lot Capacity AM-	53%
Lot Capacity PM-	73%
Lot Capacity Evenings-	39%

Saturday**Quadrant B - Northeast**

Lot Capacity AM-	44%
Lot Capacity PM-	56%
Lot Capacity Evenings-	39%

Saturday**Quadrant C - Southeast**

Lot Capacity AM-	25%
Lot Capacity PM-	34%
Lot Capacity Evenings-	24%

Saturday**Quadrant D - Southwest**

Lot Capacity AM-	56%
Lot Capacity PM-	62%
Lot Capacity Evenings-	31%

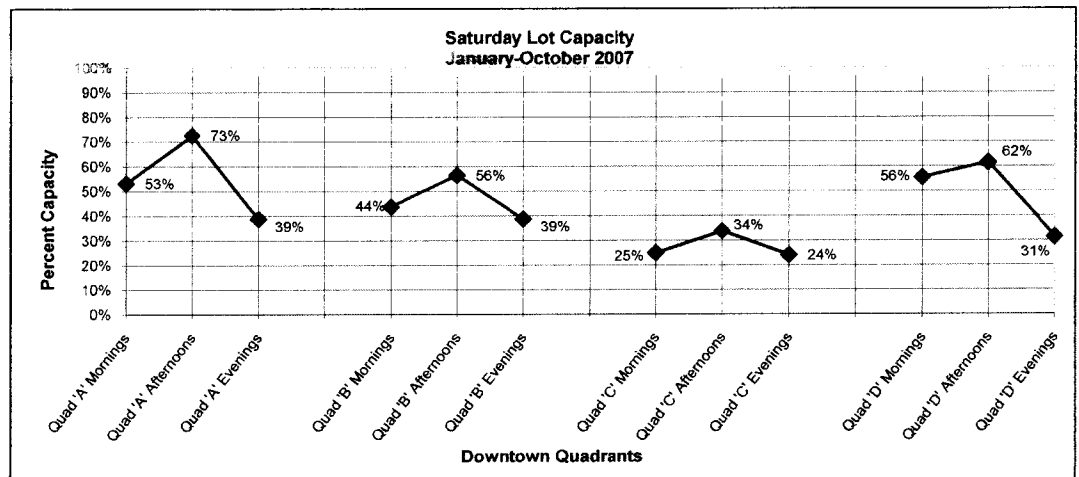
Lot Capacity: Jan-Oct 2007**(Saturday Data)**

Quad 'A' Mornings	53%
Quad 'A' Afternoons	73%
Quad 'A' Evenings	39%

Quad 'B' Mornings	44%
Quad 'B' Afternoons	56%
Quad 'B' Evenings	39%

Quad 'C' Mornings	25%
Quad 'C' Afternoons	34%
Quad 'C' Evenings	24%

Quad 'D' Mornings	56%
Quad 'D' Afternoons	62%
Quad 'D' Evenings	31%



(EXHIBIT-5)

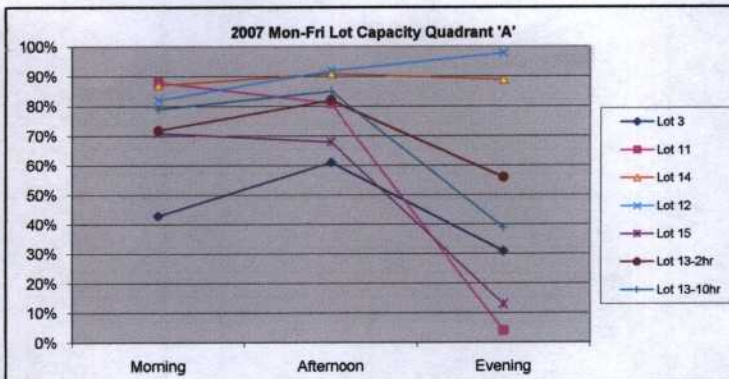
**Parking Lot Capacity Graphs: January 2007-October 2007
(Monday through Friday Data)**

City of Lawrence Parking Control

January 2007-October 2007 (Monday through Friday)

Quadrant 'A'	Morning	Afternoon	Evening
Lot 3	43%	61%	31%
Lot 11	88%	81%	4%
Lot 14	87%	91%	89%
Lot 12	82%	92%	98%
Lot 15	71%	68%	13%
Lot 13-2hr	72%	82%	56%
Lot 13-10hr	79%	85%	39%

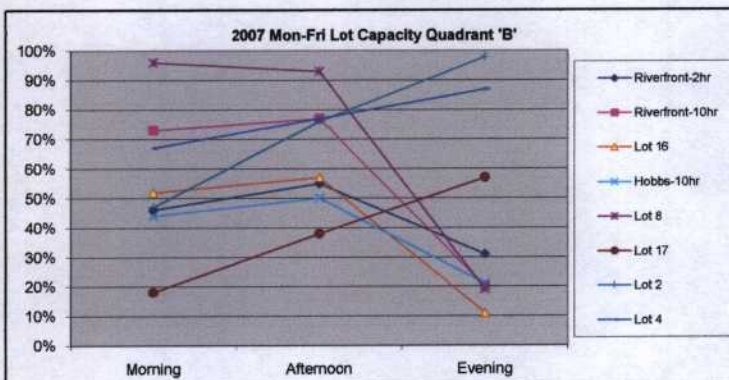
Northwest quadrant 'A' has 416 available parking lot spaces, representing 23% of the total downtown available parking lot spaces.



January 2007-October 2007 (Monday through Friday)

Quadrant 'B'	Morning	Afternoon	Evening
Riverfront-2hr	46%	55%	31%
Riverfront-10hr	73%	77%	20%
Lot 16	52%	57%	11%
Hobbs-10hr	44%	50%	21%
Lot 8	96%	93%	19%
Lot 17	18%	38%	57%
Lot 2	47%	76%	98%
Lot 4	67%	77%	87%

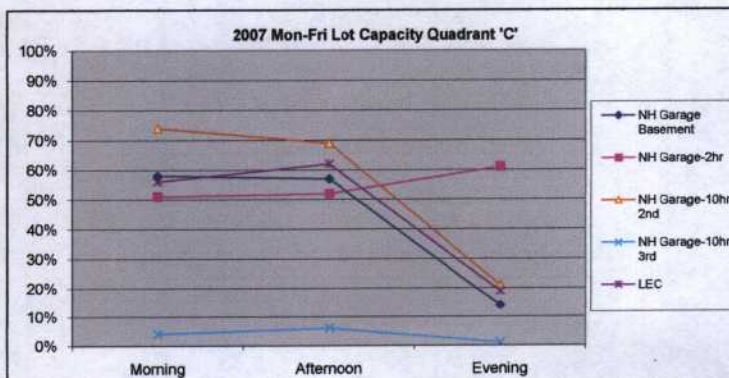
Northeast quadrant 'B' has 710 available parking lot spaces, representing 39% of the total downtown available parking lot spaces.



January 2007-October 2007 (Monday through Friday)

Quadrant 'C'	Morning	Afternoon	Evening
NH Garage Basement	58%	57%	14%
NH Garage-2hr	51%	52%	61%
NH Garage-10hr 2nd	74%	69%	21%
NH Garage-10hr 3rd	4%	6%	1%
LEC	56%	62%	19%

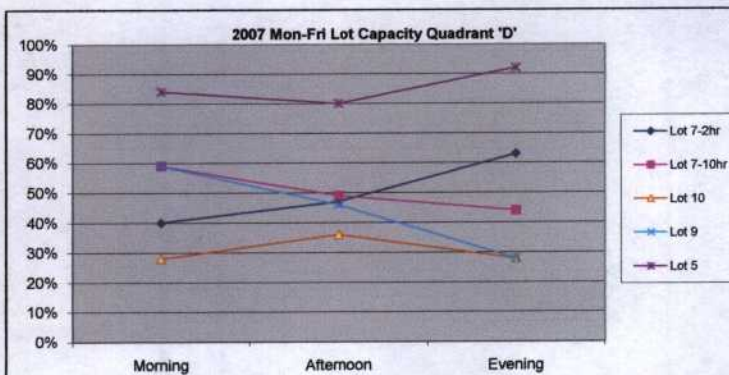
Southeast quadrant 'C' has 487 available parking lot spaces, representing 26% of the total downtown available parking lot spaces.



January 2007-October 2007 (Monday through Friday)

Quadrant 'D'	Morning	Afternoon	Evening
Lot 7-2hr	40%	47%	63%
Lot 7-10hr	59%	49%	44%
Lot 10	28%	36%	28%
Lot 9	59%	46%	28%
Lot 5	84%	80%	92%

Southwest quadrant 'D' has 212 available parking lot spaces, representing 12% of the total downtown available parking lot spaces.



(EXHIBIT-6)

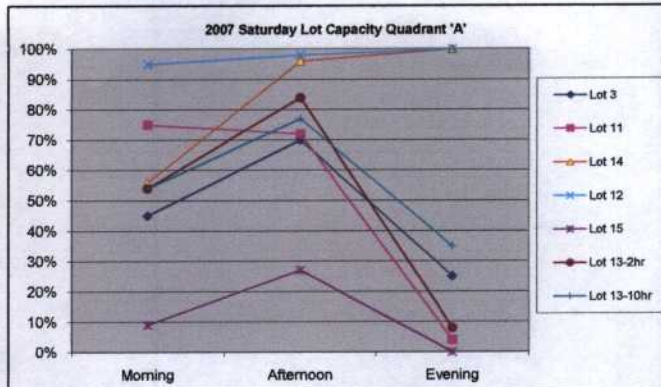
Parking Lot Capacity Graphs: January 2007-October 2007
 (Saturday Data)

City of Lawrence Parking Control

January 2007-October 2007 (Saturday)

Quadrant 'A'	Morning	Afternoon	Evening
Lot 3	45%	70%	25%
Lot 11	75%	72%	4%
Lot 14	56%	96%	100%
Lot 12	95%	98%	100%
Lot 15	9%	27%	0%
Lot 13-2hr	54%	84%	8%
Lot 13-10hr	54%	77%	35%

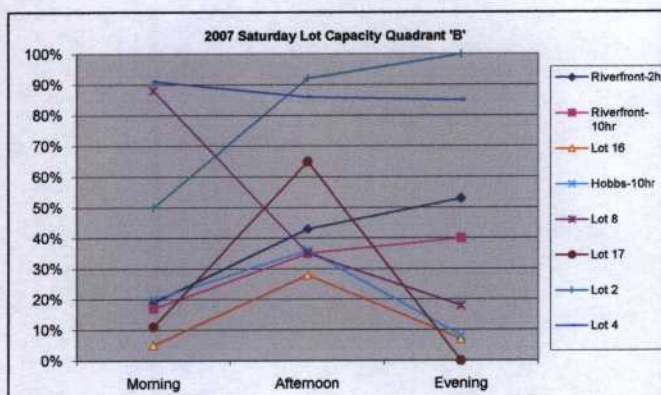
Northwest quadrant 'A' has 416 available parking lot spaces, representing 23% of the total downtown available parking lot spaces.



January 2007-October 2007 (Saturday)

Quadrant 'B'	Morning	Afternoon	Evening
Riverfront-2hr	19%	43%	53%
Riverfront-10hr	17%	35%	40%
Lot 16	5%	28%	7%
Hobbs-10hr	20%	36%	8%
Lot 8	88%	35%	18%
Lot 17	11%	65%	0%
Lot 2	50%	92%	100%
Lot 4	91%	86%	85%

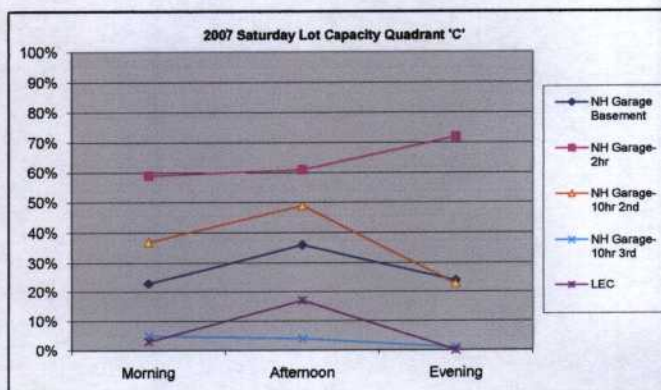
Northeast quadrant 'B' has 710 available parking lot spaces, representing 39% of the total downtown available parking lot spaces.



January 2007-October 2007 (Saturday)

Quadrant 'C'	Morning	Afternoon	Evening
NH Garage Basement	23%	36%	24%
NH Garage-2hr	59%	61%	72%
NH Garage-10hr 2nd	37%	49%	23%
NH Garage-10hr 3rd	5%	4%	1%
LEC	3%	17%	0%

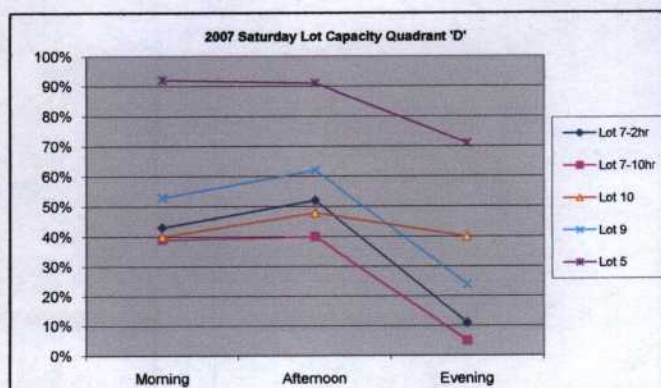
Southeast quadrant 'C' has 487 available parking lot spaces, representing 26% of the total downtown available parking lot spaces.



January 2007-October 2007 (Saturday)

Quadrant 'D'	Morning	Afternoon	Evening
Lot 7-2hr	43%	52%	11%
Lot 7-10hr	39%	40%	5%
Lot 10	40%	48%	40%
Lot 9	53%	62%	24%
Lot 5	92%	91%	71%

Southwest quadrant 'D' has 212 available parking lot spaces, representing 12% of the total downtown available parking lot spaces.

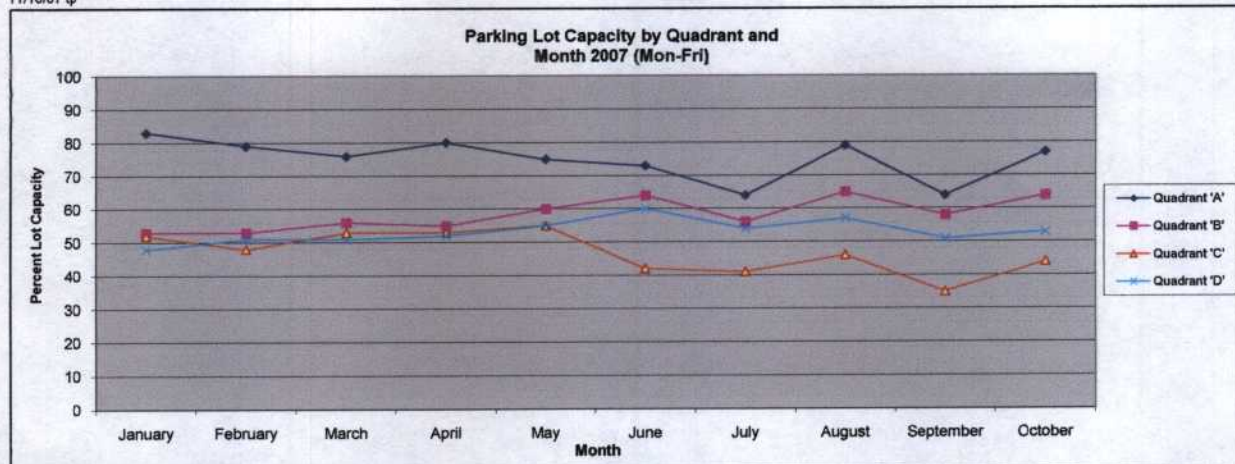


(EXHIBIT-7)

Parking Lot Capacity by Quadrant and Month
January-October 2007

City of Lawrence Parking Control

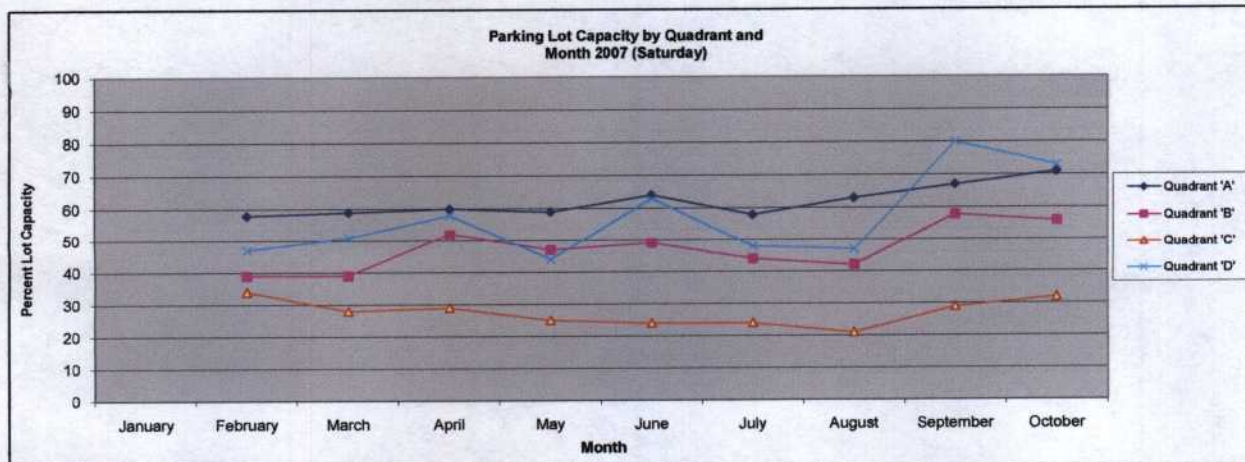
11/10/07 tp



Monday through Friday Data

(January 2007-October 2007)

Month	Quadrant 'A'	Quadrant 'B'	Quadrant 'C'	Quadrant 'D'
January	83	53	52	48
February	79	53	48	51
March	76	56	53	51
April	80	55	53	52
May	75	60	55	55
June	73	64	42	60
July	64	56	41	54
August	79	65	46	57
September	64	58	35	51
October	77	64	44	53



Saturday Data

(January 2007-October 2007)

Month	Quadrant 'A'	Quadrant 'B'	Quadrant 'C'	Quadrant 'D'
January	58	39	34	47
February	59	39	28	51
March	59	47	25	44
April	60	52	29	58
May	59	47	25	44
June	64	49	24	63
July	58	44	24	48
August	63	42	21	47
September	67	58	29	80
October	71	56	32	73

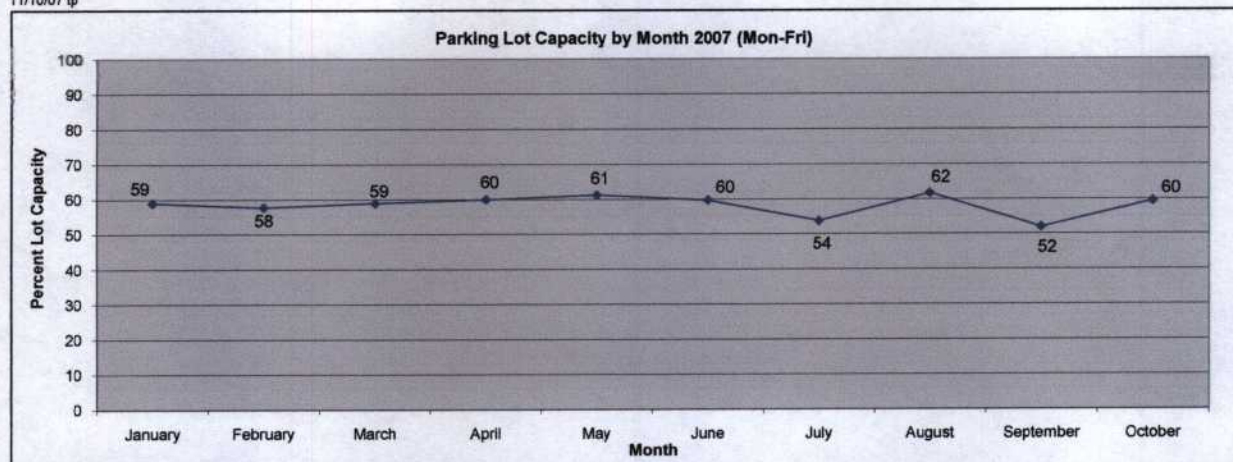
(EXHIBIT-8)

Downtown Parking Lot Capacity by Month 2007

January-October 2007

City of Lawrence Parking Control

11/10/07 lp



Monday through Friday Data

(January 2007-October 2007)

Month	Quadrant 'A'	Quadrant 'B'	Quadrant 'C'	Quadrant 'D'	Average	Month
January	83	53	52	48	59	January
February	79	53	48	51	58	February
March	76	56	53	51	59	March
April	80	55	53	52	60	April
May	75	60	55	55	61	May
June	73	64	42	60	60	June
July	64	56	41	54	54	July
August	79	65	46	57	62	August
September	64	58	35	51	52	September
October	77	64	44	53	60	October



Saturday Data

(January 2007-October 2007)

Month	Quadrant 'A'	Quadrant 'B'	Quadrant 'C'	Quadrant 'D'	Average	Month
January	58	39	34	47	45	January
February	59	39	28	51	44	February
March	60	52	29	58	50	March
April	59	47	25	44	44	April
May	64	49	24	63	50	May
June	58	44	24	48	44	June
July	63	42	21	47	43	July
August	67	58	29	80	59	August
September	71	56	32	73	58	September
October						October