

A REPLAT OF STONERIDGE PLAZA, A SUBDIVISION IN THE SOUTHEAST QUARTER OF SECTION 4, TOWNSHIP 13 SOUTH, RANGE 19 EAST OF THE SIXTH PRINCIPAL MERIDIAN, IN THE CITY OF LAWRENCE, DODGAS COUNTY, KANSAS, AS SHOWN ON THE RECORDED PLAT THEREOF. CONTAINS 5.046 ACRES, MORE OR LESS.

IT IS FURTHER AGREED THAT THE UNDERSIGNED OWNERS OF THE ABOVE DESCRIBED TRACT BE IT KNOWN THAT THE SAME IS NOT TO BE SPLITTED AND PARTED UNDER THE NAME OF LAND, WATER AND CULDS FOR THE SAME TO BE SPLITTED AND PARTED UNDER THE NAME OF "BARBON ADDITION AND HAVE CHASED" THE SAME TO BE SUBDIVIDED AND LOTS AND STREETS AS SHOWN AND LOTS DEFINED ON THIS PLAT. ALL STREETS, PAVES, RAVES, ETC. SHOWN ON THIS PLAT ARE NOT HERETOFORE DEDICATED TO PUBLIC USE AND THEREBY SO DEDICATED. AN EASEMENT IS HEREBY GRANTED TO THE CITY OF LAMARCO AND PUBLIC UTILITY COMPANIES TO ENTER UPON, CONSTRUCT AND MAINTAIN UTILITIES (POWER, GAS, AND OTHER) THROU THESE AREAS OUTLINED ON THIS PLAT AS EASEMENT OF "V/E" AND "BOROUGH EASEMENT" OF "V/E".

STATE OF KANSAS
COUNTY OF DOUGLAS

NOTARY PUBLIC

APPROVED BY
LAWRENCE - DOUGLAS COUNTY
PLANNING COMMISSION
DOUGLAS COUNTY, KANSAS

UPPER
HOLLY KREBS

REVIEWED BY:

MICHAEL D. KELLY, P.L.S. / 1869 **DATE**
DOUGLAS COUNTY SURETOR

STATE OF KANSAS
COUNTY OF DOUGLAS

THIS IS TO CERTIFY THAT THIS INSTRUMENT WAS FILED FOR RECORD IN THE OFFICE OF THE DOUGLAS COUNTY RECORDER OF DEEDS ON THIS _____ DAY OF _____, 2006, AND IS DULY RECORDED AT AM (PM), IN PLAT BOOK _____ PAGE _____.

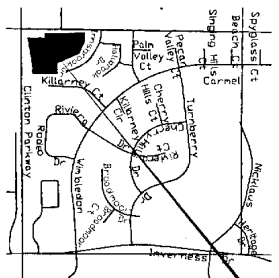
REGISTER OF DEEDS
KAY PESNELL

I HEREBY CERTIFY THAT THE PLATTED AREA AND THE LOCATION MAP SHOWN HEREON ARE THE TRUE AND ACCURATE RESULTS OF A FIELD SURVEY PERFORMED UNDER MY DIRECTION IN THE MONTH OF JULY, 2006 AND THAT THE PLAT IS A CLOSED TRAVERSE.

JOHN E. SELK, P.E., P.L.S. #610

1310 MACARTHUR DR
LAWRENCE, KANSAS 66049
(785) 843-7530

PLAT PREPARED SEPTEMBER 6, 2005

MIRACON PLAZA
ADDITION

LOCATION MAP

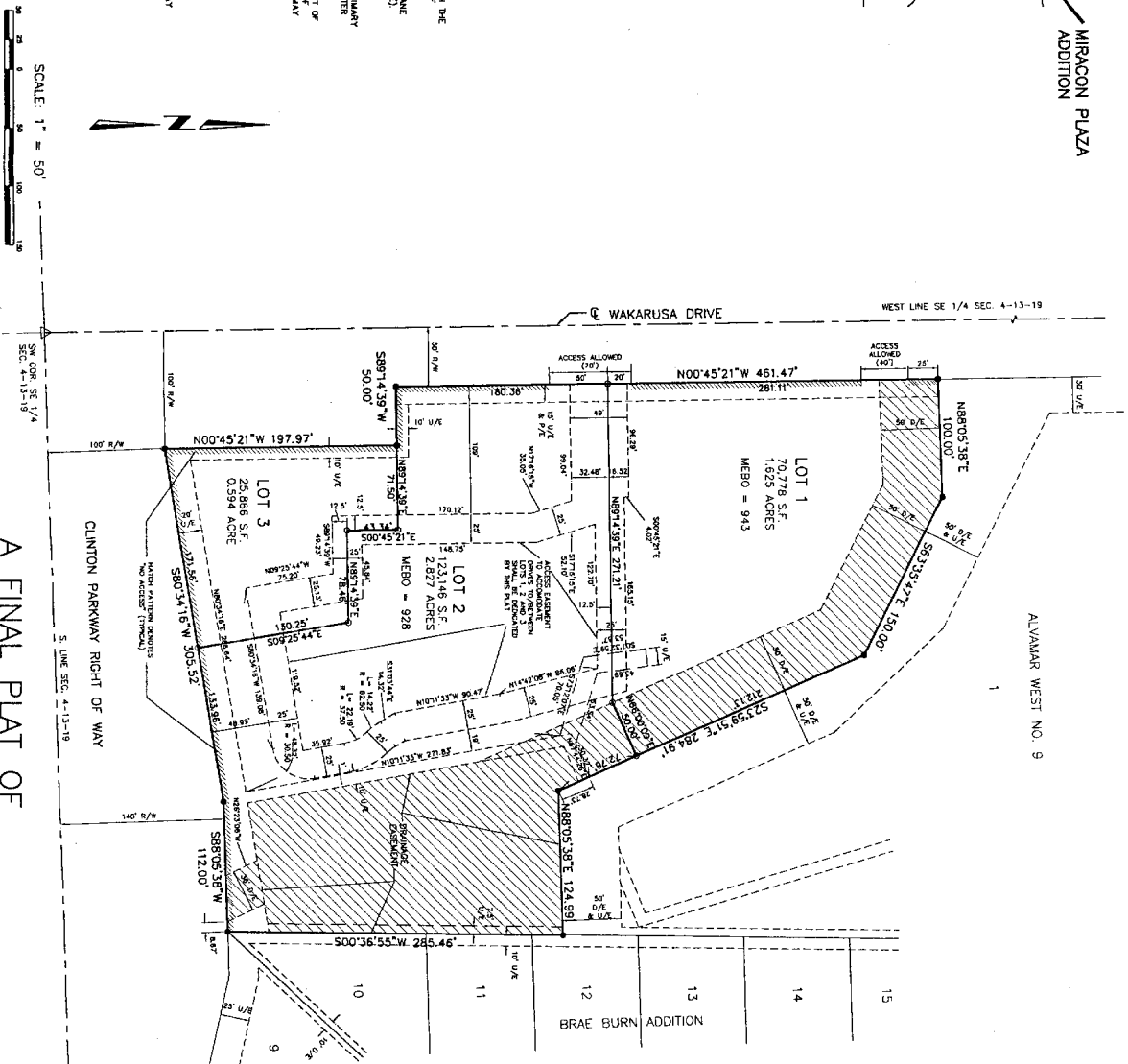
SE 1/4, SEC. 4-13-19
NOT TO SCALE

0 1/2" X 24" BAR W/CAP "PLS 610" SET

- 1/2" BAR W/CAP "PLS610" FOUND (ORIGINAL LOT CORNER SET BY LANDPLAN ENGINEERING)

NOTES

- [illegible]



MIRACON PLAZA ADDITION

**A REPLAT OF STONERIDGE PLAZA
A SUBDIVISION IN THE CITY OF LAWRENCE, DOUGLAS COUNTY, KANSAS**

SE 1/4, SEC. 4-T13S-R19E