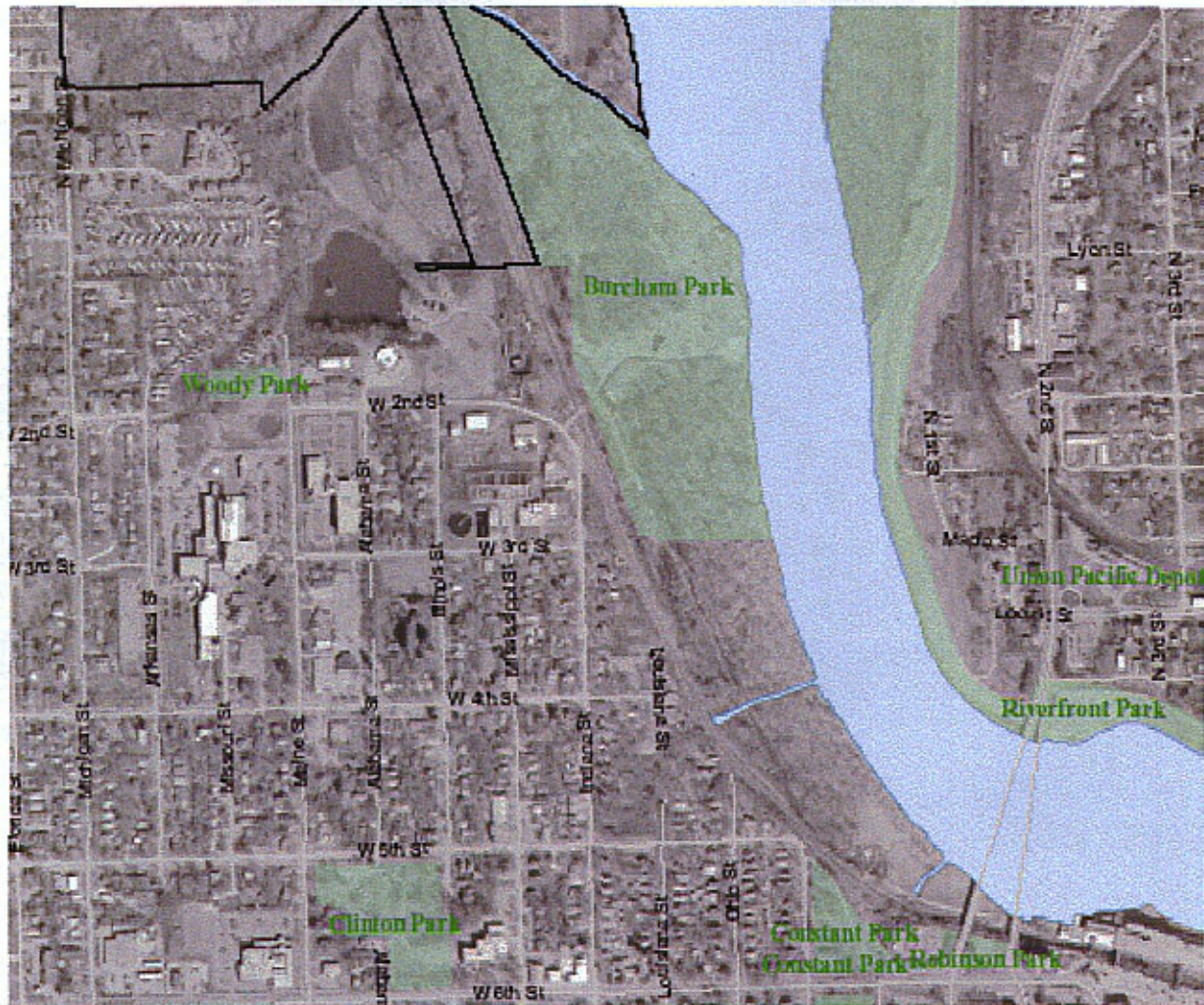


*The Kansas River Expression of Soul
Sculpture Trail and Wildlife
Sanctuary*

Map of Future Kansas River Expression of Soul Sculpture Trail & Wildlife Sanctuary

N



S

A Unique concept of ecological & artistic collaboration for the area between the Constance and Burcham Parks.

Before



After





A broad spectrum of nature pathways can enhance each particular area of habitat. Stone, wooden planks, and mulch are just a few shown here.



Currently, Constance and Burcham Parks connect using a dirt trail running north and south. We would like to see meandering pathways, and paved trails that can be accessible to the interior beauty of this forest, as well as along the outer bank.







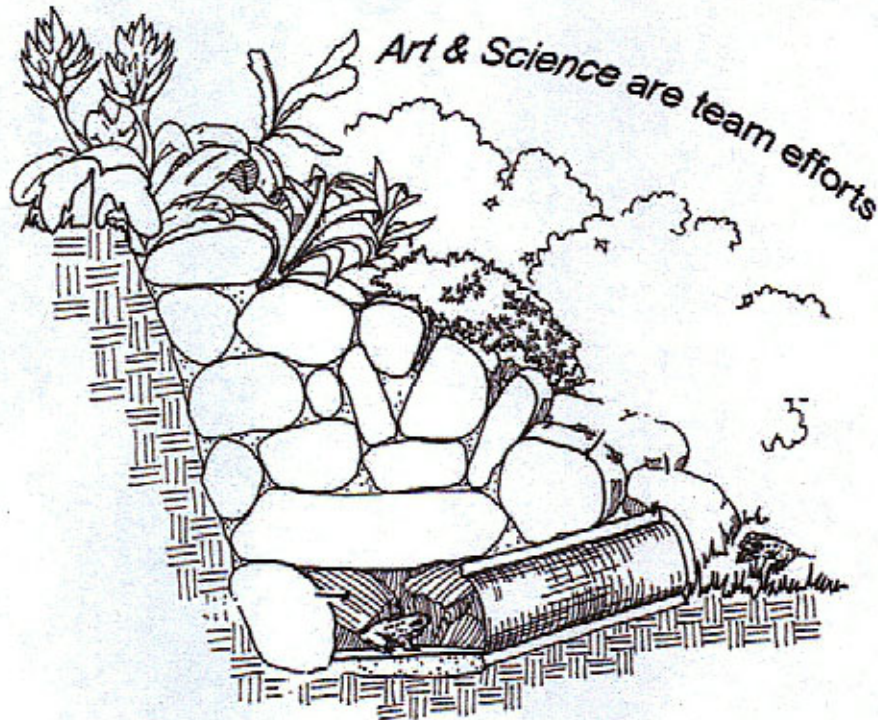
We would like to propose an ecological, and artistic aesthetic for these nature trails. Sculptures, included in and along the trails can serve as wildlife shelter and enhance the natural beauty and bring awareness of the Kansas River.



Westar Energy and other "Green" groups will cooperate with Parks & Recs., in developing a more suitable and sustainable environment located in "boggy" areas underneath the power transmitters, behind the forested area west of the river. A powerful reminder of flood plain river history, this conservational habitat can be a beautiful wetland complete with indigenous plant life; such as cattails, reeds, and water flowers. We can commemorate this unique space with a historical marker at the completion of this project.



Sketch of Amphibian Shelter that is also a rock garden



Restoration of habitat provides beauty and stabilization



This in turn attracts more wildlife in a manageable condition



Painted Roost



Raptor Roost



Duck Roost



Butterfly House



Community Appreciation and Volunteer Opportunities

Community and professional groups can be an interactive and multi-faceted curation. These groups can create various projects, and plan clean up workdays while providing educational and valuable mentorship experience.



Eagle scouts build park benches for relaxing while observing wildlife.



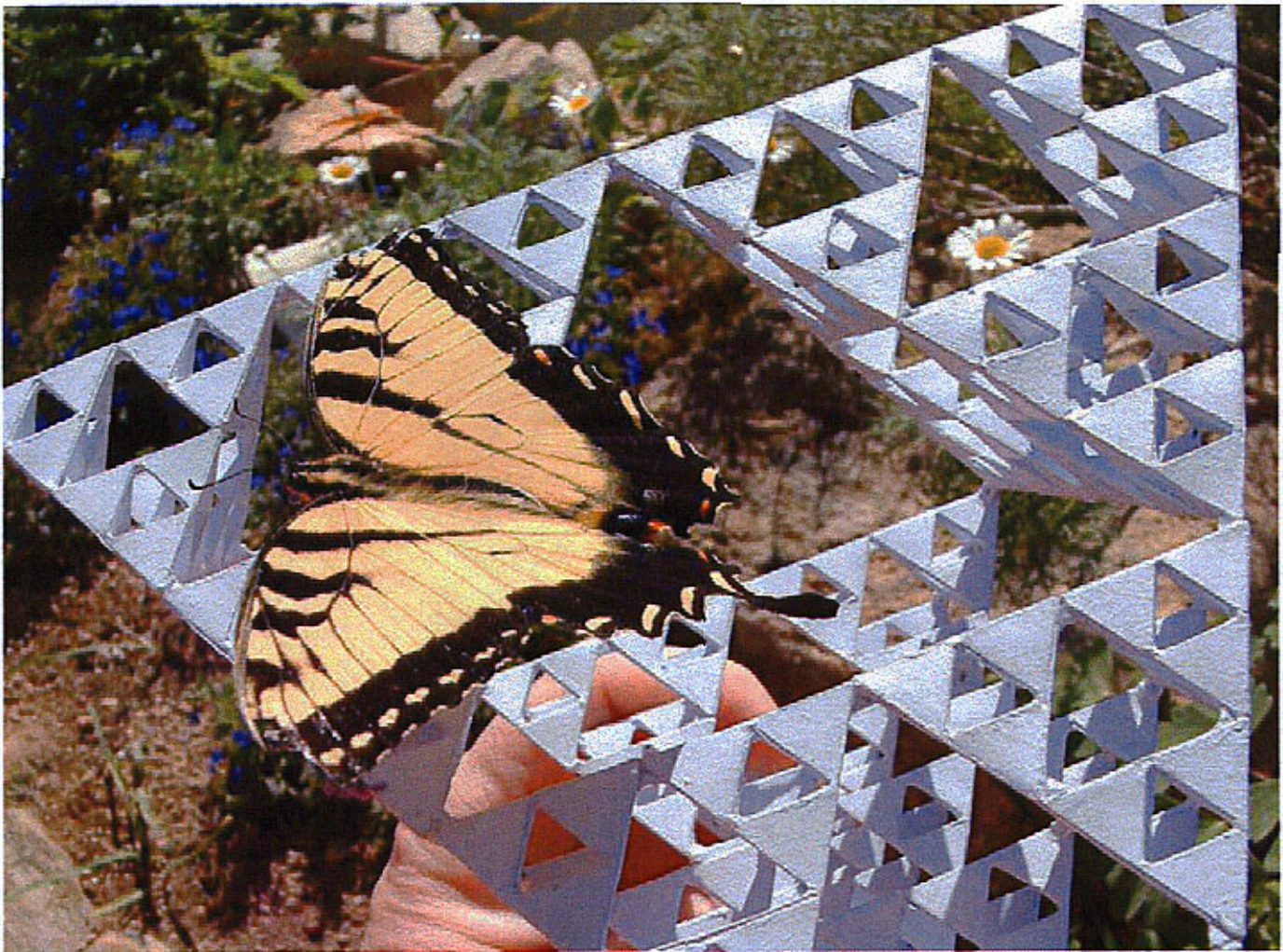
K.U. Plant ecologist, Kelly Kindscher helps prepare a native plant habitat, and will involve his students with research and development.

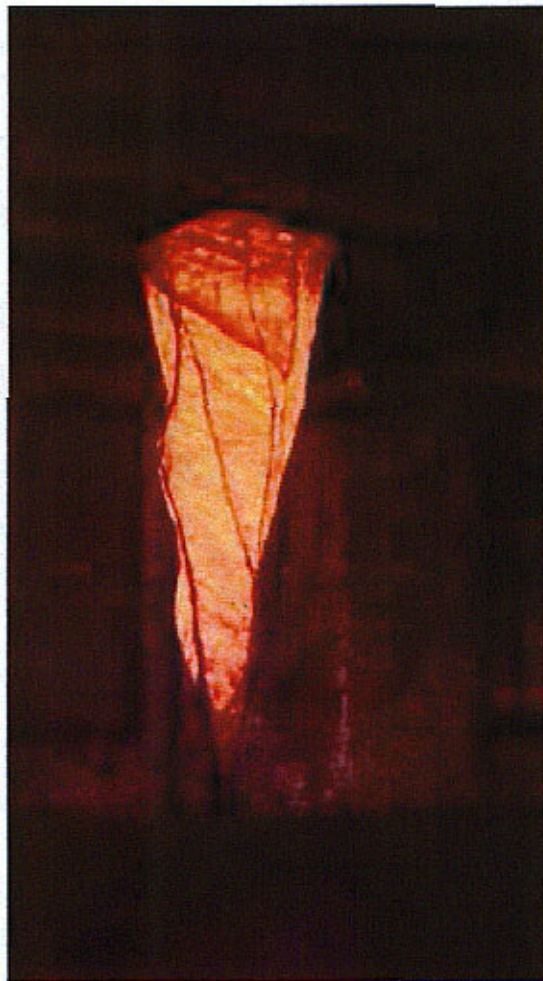
The sculpture trail will provide an educational outlet for diverse studies in the nature sciences.

Public art can be more than just a representation of natural things that exist around us, or just a habitat area filled with statues.

This collaboration of artists, scientists, and the community of Lawrence can create sculpture to communicate ideas, views, and convictions, particularly those on environmental issues, through actions.

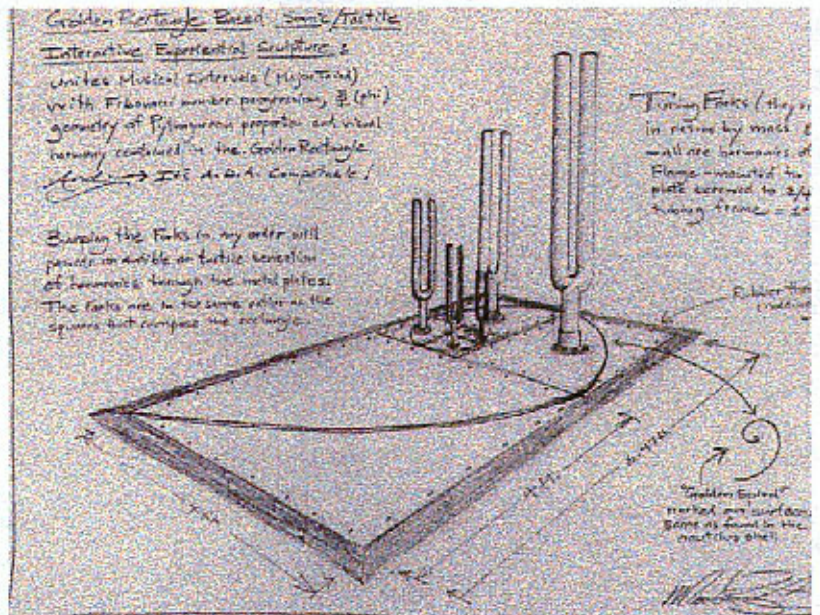
Environmental art resonates with people because we are all hungry to feel a connection.





"Jupiter's Forest"
John Hachmeister

"Studio 150"
Hugh Merrill



"Tuning Forks"
proposal drawing for
wind sculpture
Matt Kirby



*"Space for contemplating
Lithuania-all the while
the snails crawled."*
Karen McCoy



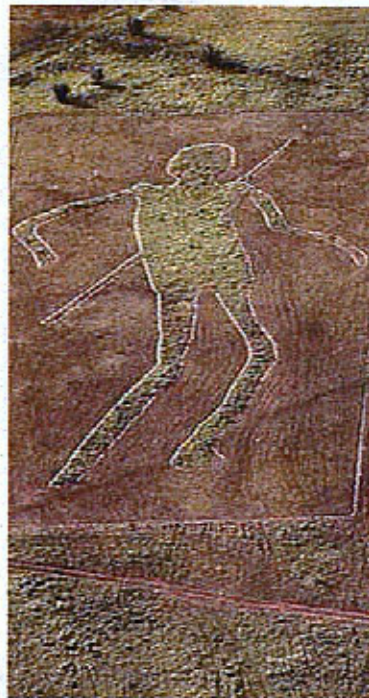
"Revealed"
Anna Gillespie



"Kanza Sky"
Eagle roosts
Marie Thompson

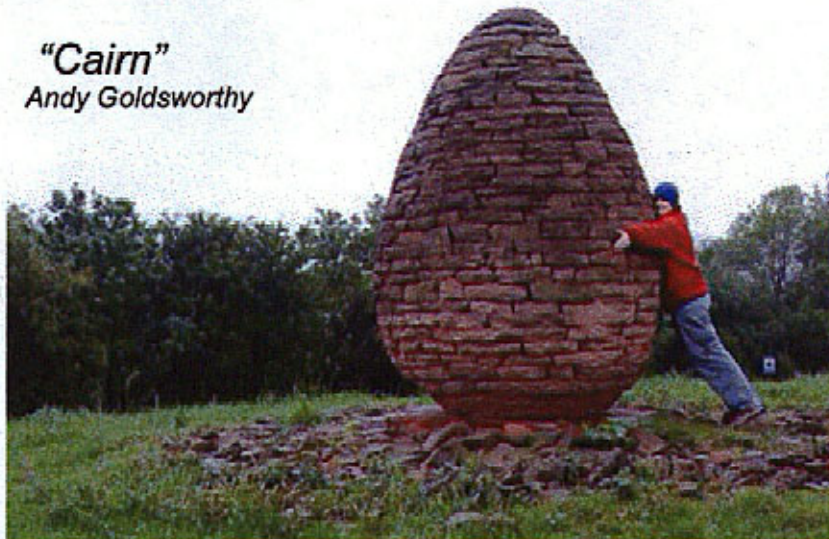
"Prairie Man"

Stan Herd



"Cairn"

Andy Goldsworthy



Other examples of functional sculpture that blend wonderfully into nature



Wood and fiber

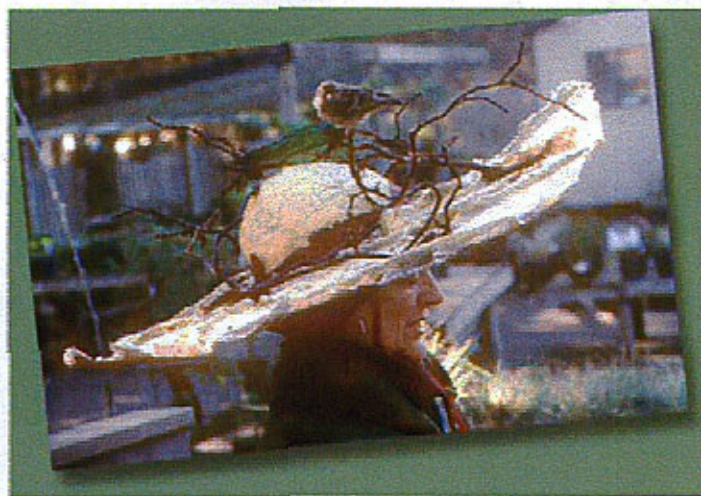


Plain box

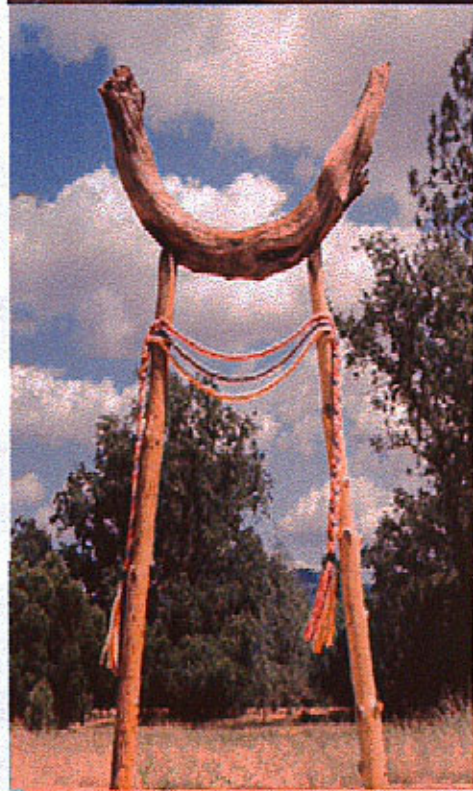
Is it Sculpture or Shelter?



Ceramic and steel



Wearable Shelter



Educational, and informational signposts, kiosks, and signage, mark the trails and help explain the various objects, and habitats.



Artists can also create educational works of art.

Sandblasted Stone Markers show details





The Future of Arts and Conservation in Lawrence Begins with "WE"