

The Post

Lawrence Douglas County Fire Medical Explorer Post #2555

2005

The Year In Review

Membership

New Members

Alex Ahlert
 Alex Bensen
 Chad Howard
 Colby Harrell
 Mason McCurdy
 Ian Thomas
 Justin Deaver
 Nick Stickney
 Bianca Babcock

Positions

(December – June)

Chief	Josh Ahlert
Deputy Chief	Chad Lisher
Division Chief	Johnny Brubaker
Captain (S)	Don Carbaugh
Captain (T)	Jason Parker
Firefighter	Chad Howard
Firefighter	Ian Thomas
Firefighter	Colby Harrell
Firefighter	Alex Bensen
Firefighter	Bianca Babcock

(June – December)

Chief	Josh Ahlert
Deputy Chief	Colby Harrell
Division Chief	B. Babcock/J. Brubaker
Captain (S)	Alex Bensen
Captain (T)	Chad Howard
Firefighter	Alex Ahlert
Firefighter	Mason McCurdy
Firefighter	Ian Thomas
Firefighter	Justin Deaver
Firefighter	Nick Stickney
Firefighter	Alex Bensen

Activities

Kansas City At Night

This event was focused on meeting other Explorer Posts. We went to a Royals game, City Morgue, Post Office, and visited K-9 dogs.

LDCFM Fire Academy

We helped LDCFM with their fire academy. Events ranged from fire safety to bucket brigades.

LDCFM Fatal Vision

We assisted LDCFM at Lawrence and Free State High School with this program that shows what happens when you drive under the influence of alcohol and narcotics.

LDCFM Helmet Fair

This event is focused on bike safety. We helped fit and distribute bike helmets to children of all ages.

Douglas County Fair

We helped provide Basic First Aid at the derby and the fairgrounds. This was also a great recruitment opportunity for us.

The Post

Lawrence Douglas County Fire Medical Explorer Post #2555

2005

The Year In Review

Training

Core Competencies

The Explorer Post has a new list of core competencies that they will train on every year. They began this cycle at the beginning of 2005. After a 1-year period a Probationary Explorer may challenge the ride-out test and become an Explorer. They also have a task book that they can complete to be able to test out faster.

Explorer Level

The written test and performance tests were updated to meet the new core competency list.

The department purchased new helmet shields for the Explorer's. When a Probationary Explorer becomes an Explorer they will be able to wear the shield on their helmet to show their achievement.



LDCFM Night Burns

The Explorer's were able to gain valuable experience this year by participating in the night burns that the department conducted. The scenarios included standpipe operations in a commercial occupancy and a fire in a two-story wood-frame, single-family residence. The Explorer's were present on three of the nights.

Community Emergency Response Team (CERT)



We had several members of the Post become trained. Those members are:

Johnny Brubaker
Alex Bensen
Chad Howard
Chad Lisher
Josh Ahlert
Nick Stickney

Study Guide

The work on the study guide for the Explorer level written and performance tests began in September 2005. It will be completed in March of 2006.

SCAFFA School

The Explorers took advantage of the training opportunity in Topeka, Ks. They took various fire service classes.

The Post

Lawrence Douglas County Fire Medical Explorer Post #2555

2005

The Year In Review

Administrative



Goals

The Explorers have developed short and long term goals, personally and for the post. They organized 6-month, 1-year, 2-year, 5-year, and 10-year goals.

Handbook

A new Explorer Handbook was adopted. It mirrors the department's format.

Public Folders

The Advisors have an Explorer folder on the department's public folders. It includes the following:

- Calendar
- Contacts
- Handbook
- Task book
- Study guide



Recruitment

We are always looking for new members at all of the activities that we participate in. In addition to those activities we gave flyers and posters out during fire prevention week to the following:

- Lawrence High School
- Free State High School
- Baldwin City High School
- Eudora High School

The Post

Lawrence Douglas County Fire Medical Explorer Post #2555

2005

The Year In Review

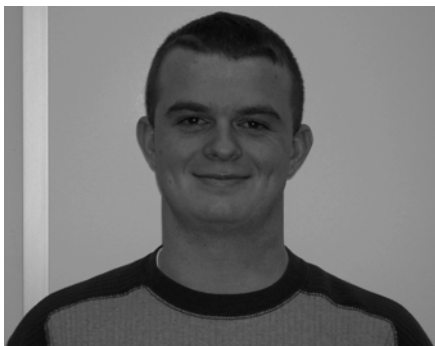
Honors & Awards

Two More Explorers Hired By LDCFM



Andy Flory

Andy Flory was an Explorer for 3 years. He went through the 16th Recruit academy and is now full-time at 3Y.



Chad Lisher

Chad Lisher was an Explorer for 4 years. He recently graduated from the 17th recruit class and serves on Y-shift as an Extra-board Firefighter. He is now an active advisor for the post.

LDCFM has now hired four Explorers. The other two are Nathan Jamison (15th Recruit class) and Aaron Payne (16th Recruit class).

Explorer Of The Year: 2005

This is a new tradition for the post and it is currently the highest award that an Explorer can receive.



Josh Ahlert

Josh has been an Explorer for 3 years. He was the Explorer Chief for both terms last year. Through his strong leadership last year he influenced the post in a very positive way and helped shape it to what it is today. He is always willing to help those in need and never asks for anything in return.

Josh will pursue the fire service as a career. He plans to become an Advisor with the post after two more years as an Explorer.