

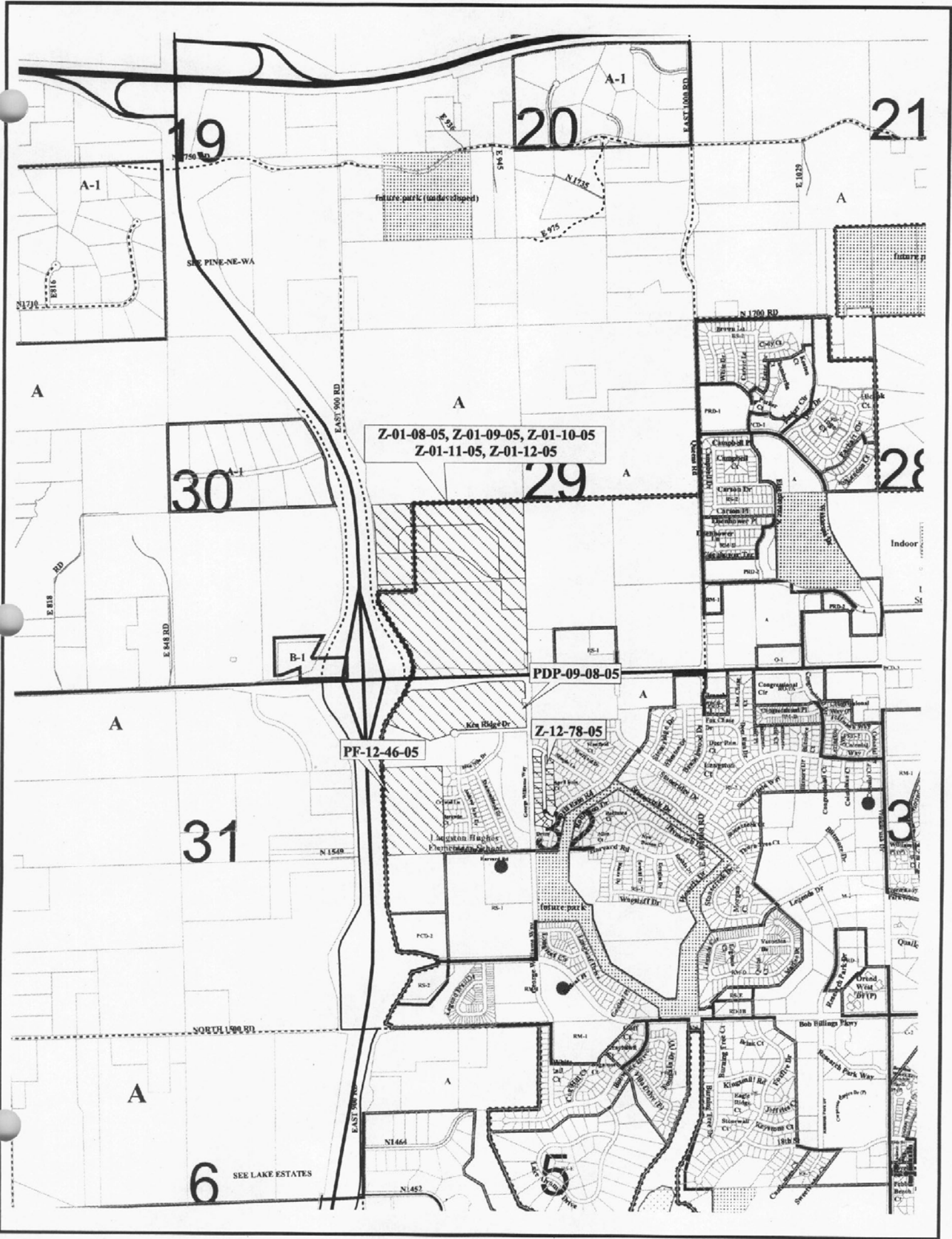
Z-12-78-05: Rezone 8.19 acres from RS-2 to RM-D  
 North of Harvard Rd & east of George Williams Way

Lawrence-Douglas County Planning Office  
 January 2006



Area Requested

Scale: 1 Inch = 500 Feet



19

20

21

30

29

28

31

3

6

5

SEE PINE-NE-WA

SEE LAKE ESTATES

Z-01-08-05, Z-01-09-05, Z-01-10-05  
Z-01-11-05, Z-01-12-05

PDP-09-08-05

PF-12-46-05

Z-12-78-05

J. Hagston Higher  
Memorial School

future park

Indoor