



DEPARTMENT OF THE ARMY
CLINTON PROJECT OFFICE
KANSAS CITY DISTRICT, CORPS OF ENGINEERS
872 N. 1402 ROAD
LAWRENCE, KANSAS 66049-9048

REPLY TO
ATTENTION OF:
CENWK-OF-CL

27 July, 2004



Fred DeVictor
City of Lawrence Parks and Recreation Department
947 New Hampshire
Lawrence, KS 66046

Dear Mr. DeVictor,

The U.S. Army Corps of Engineers office at Clinton Lake requests the participation and support of the City of Lawrence Parks and Recreation Department in establishment of a new Overlook Trail at Clinton Lake. The Overlook Trail will further enhance the existing trail network that exists throughout the Lawrence area.

Our plan is to connect to your multipurpose trail that exists in the Clinton Lake emergency spillway that is within the City of Lawrence recreational leasehold and proceed west following the continuation of the spillway and loop around Sander's Mound. The area receives high visitation and construction of the trail will increase public recreational pursuits in the area while reducing the impact of traffic on undesignated trails. The Overlook Trail will serve walkers, bicyclers, and many other multipurpose trail users.

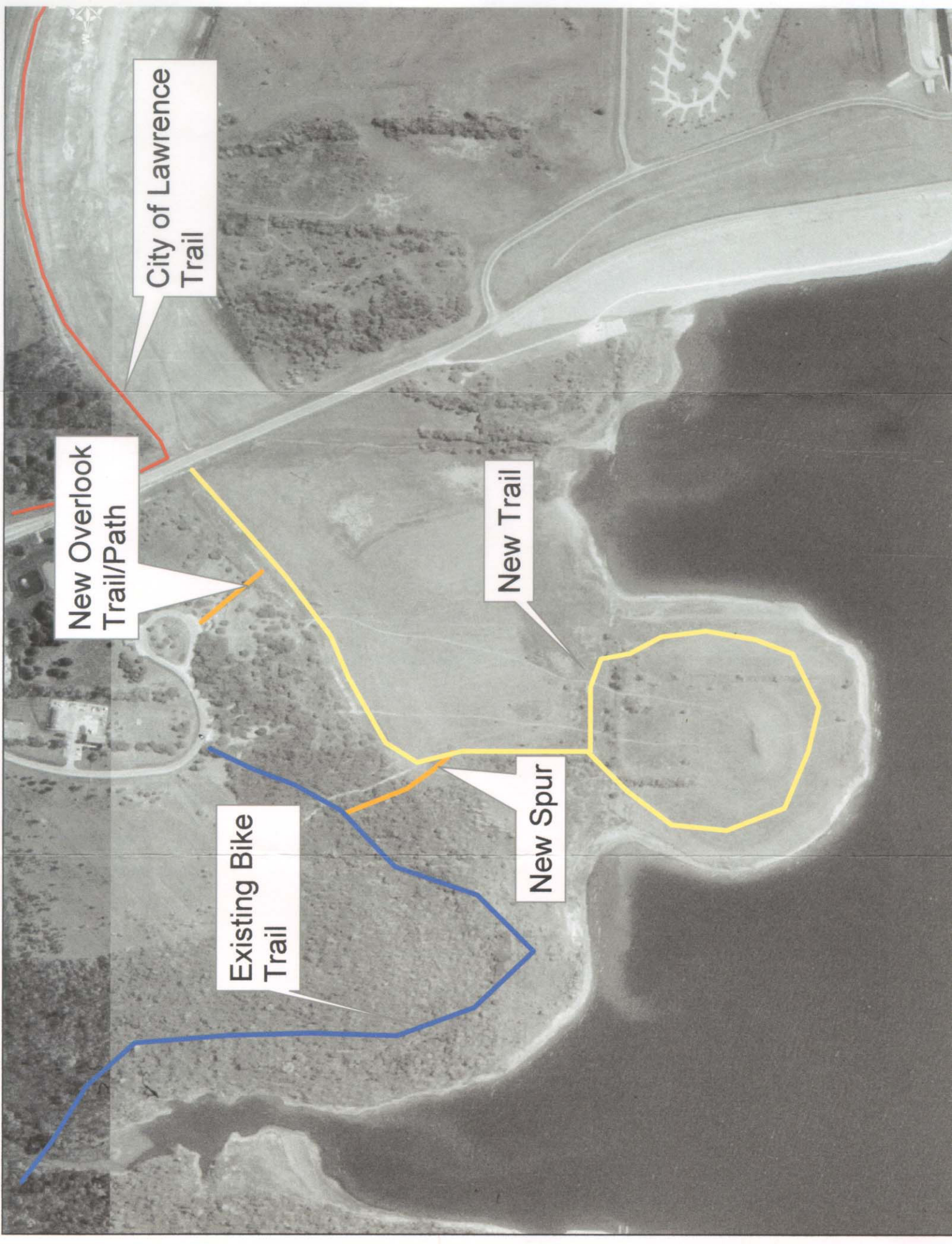
Our office plans to submit a grant proposal to the Kansas Department of Wildlife and Parks for funding through the Recreation Trail Grant Program. It is my desire that the City contribute to this project as the sponsor, given your expertise in design, planning, and use of multipurpose trails in an urban setting. Kansas Wildscape has also agreed to participate by providing administrative and planning support.

The Corps will participate as a third partner, providing equipment, supplies, and labor as needed. Requirements of the grant stipulate that a 20% matching contribution be provided of which we will accomplish through in-kind contributions from the partners. No outright funding is requested from the City of Lawrence for this project, only planning and design expertise. We estimate that 7,000 feet of 10 feet wide trail will need to be constructed at a cost of \$120,000. The 20% matching contribution will be approximately \$30,000 of in-kind support, with total costs at \$150,000. We hope to submit the grant proposal by August 25th and receive funding for construction in 2005.

If you have any questions about this project, feel free to contact Willem Helms or David Rhoades of my staff at 785-843-7665. We look forward to your participation in this project.

Sincerely,

Lew T. Ruona
Operations Project Manager



City of Lawrence Trail

New Overlook Trail/Path

New Trail

New Spur

Existing Bike Trail