



Water Tower Park

Redevelopment planning meeting Feb 26th, 2025

Water Tower Park

Staff Introductions

- Mark Hecker: Assistant Director Parks & Recreation
- Pat Hennessey: Parks Operations Manager
- Tyler Fike: Horticulture and Forestry Manager
- Caroline Bridgewater : MSO Project Manager

- Luis Ruiz: Director of Parks and Recreation
- Porter Arneill: Assistant Director Parks & Recreation
- Roger Steinbrock: Communications Manager



Water Tower Park

- 2022 - \$125,000 was allocated in the City's 2022 Capital Improvement Plan (CIP) for reconstruction of Water Tower Park
- June 2022: Due to construction delays with the water tower, Water Tower Park was not ready for redevelopment in 2022, and the funding was reallocated elsewhere with plans to submit a new CIP item in future years.
- March 2023: Public engagement continues, including a public survey and neighborhood planning meeting to inform the development of a new Capital Improvement Project for the park
- May 2023: Community discussion of play structures, funding sources, and park layout
- Summer/Fall 2023 Park Concept Plan
- Fall 2024: If approved, park improvements will begin after the water tower construction has been completed
- **Project was funded as a 2025 CIP project at \$185,000**



Water Tower Park

2023 Meeting Recap

Primary Considerations

- Maintain the character of the park, especially the simplicity.
- Proximity of the park to Hillcrest Elementary and its playground.
- Proximity to the University and its Students
- Play features that are compact but still appeal to a large range of ages
- Minimizing the amount of noise and artificial light



Water Tower Park

2023 Meeting Recap

- Playground Equipment
- Backstop
- Pollinator Garden
- Benches and Seating
- Park Trees and Landscaping
 - Water Fountain (with dog bowl option)
 - Sail Shade Structure
 - Dog Waste Station
 - Historic Markers



Playground Equipment \$65,000

Playground Surfacing \$40,000

Sidewalks \$30,000

Perennial / Pollinator Garden \$7,000

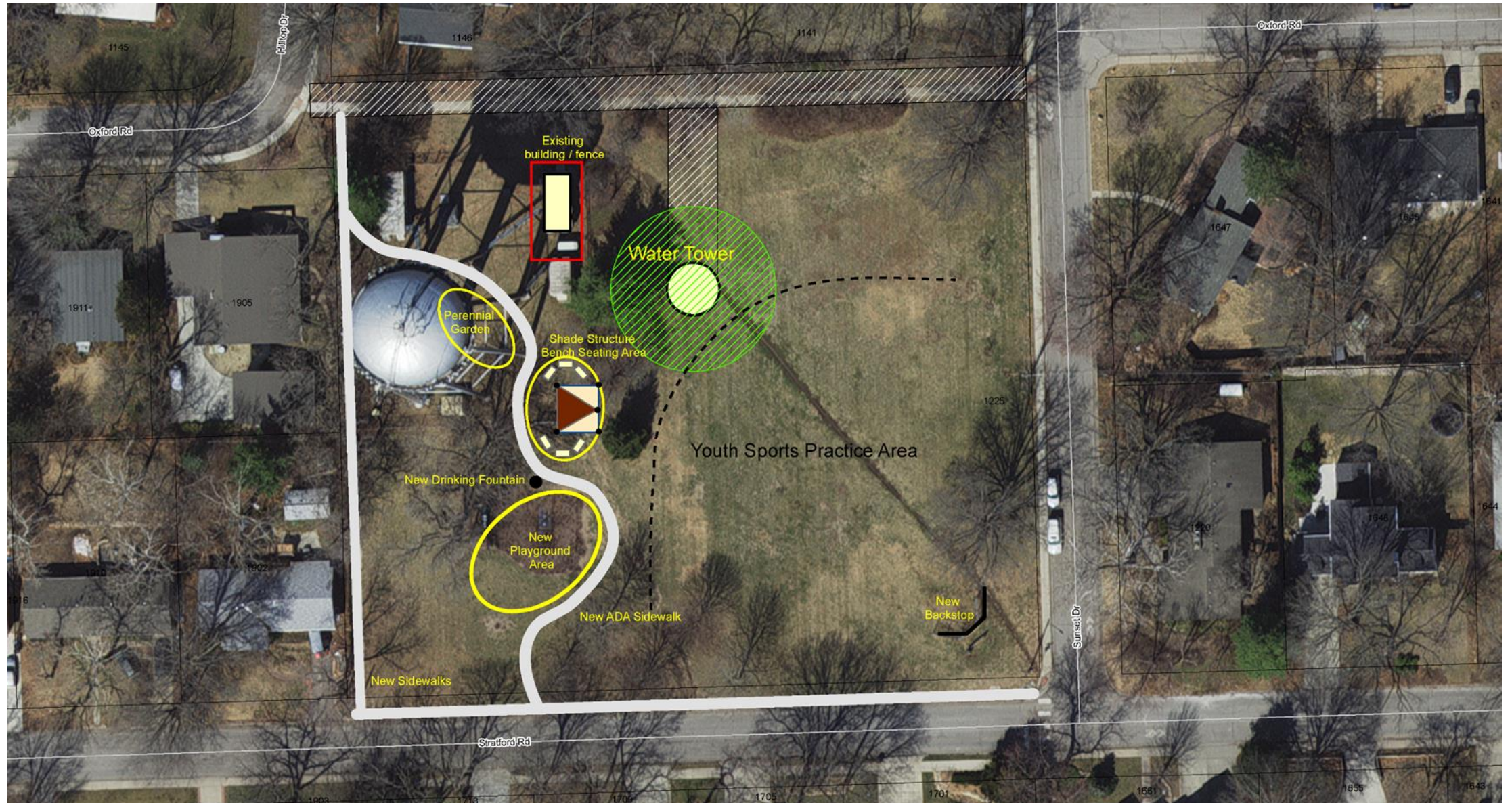
Park Tree \$5,000

Seating Area / Benches \$8,000

Shade Sail Structure \$30,000

2023
Estimated
Project
Budget
\$185,000

2023 proposed Park Layout



Notes from our December 16th Meeting

- Add \$30,000 to the playground budget by eliminating the proposed shade structure.
- Redraw proposed sidewalk to exit the park at the NW corner
- Look at moving perennial / pollinator bed to area near existing building (maybe add shrubs next to fence)
- Look at pricing higher quality benches and tables as budget allows
- Drinking fountain to include bottle filler, ADA fountain and dog water bowl.
- Replace backstop with similar size fence
- Look at adding electric near the large spruce tree in the center of the park
- Develop a program that would allow donor recognition plaques to be installed on donated benches, tables, drinking fountains.
- Next meeting late January / early February



Southwest corner of the park looking North



Southeast corner of the park looking north



Northeast corner of the park looking West



Northwest corner of the park looking East



Northwest corner of Park looking South

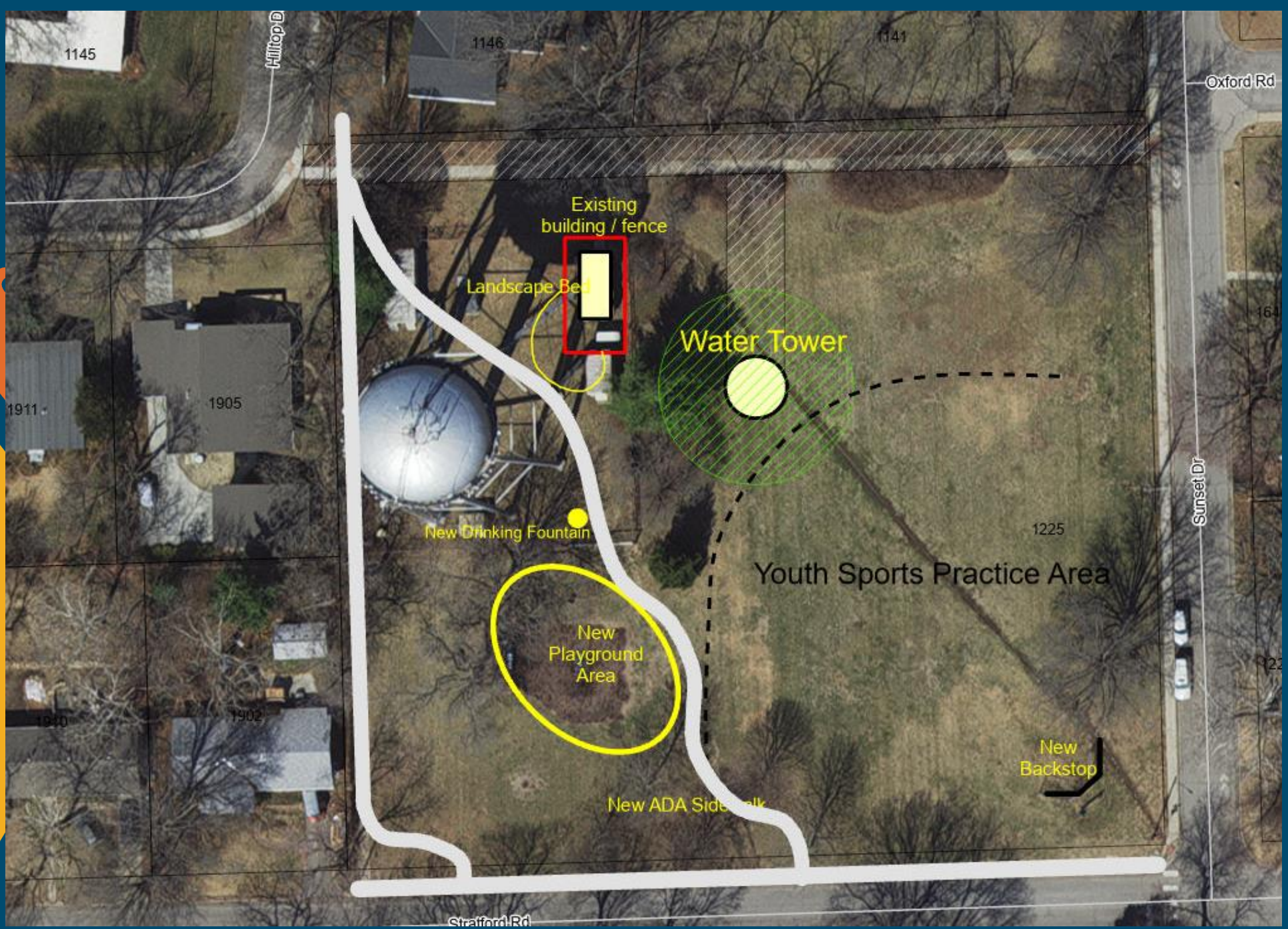


Playground Priorities

- Compact
- Simple
- Multi-age appropriate
- Quiet



2025 layout

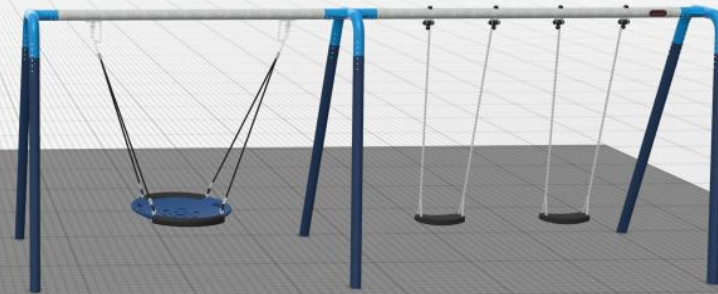
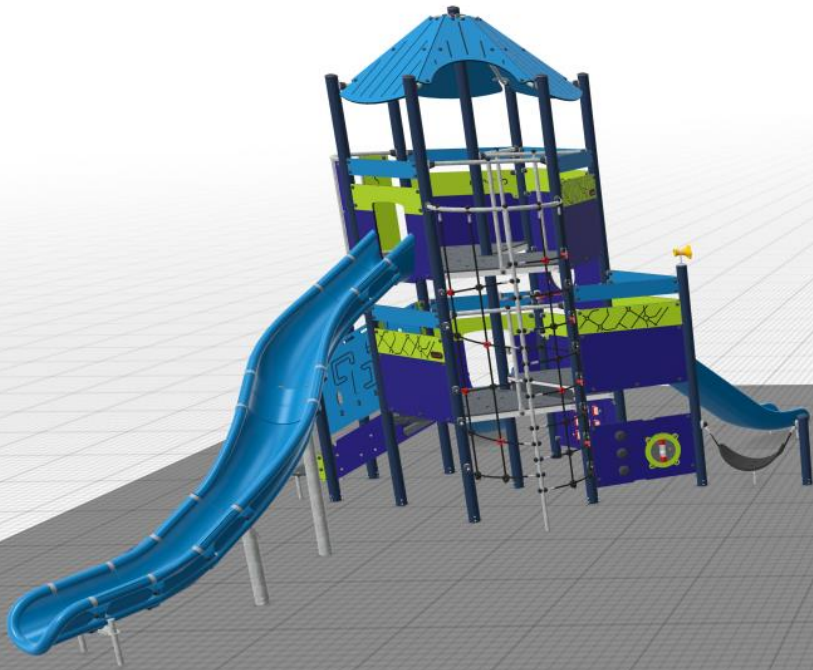


Playground Equipment	\$85,000
Playground Surfacing	\$50,000
Sidewalks	\$30,000
Perennial / Pollinator Garden	\$7,000
Park Tree	\$5,000
Seating Area / Benches	\$8,000
Shade Sail Structure	\$0

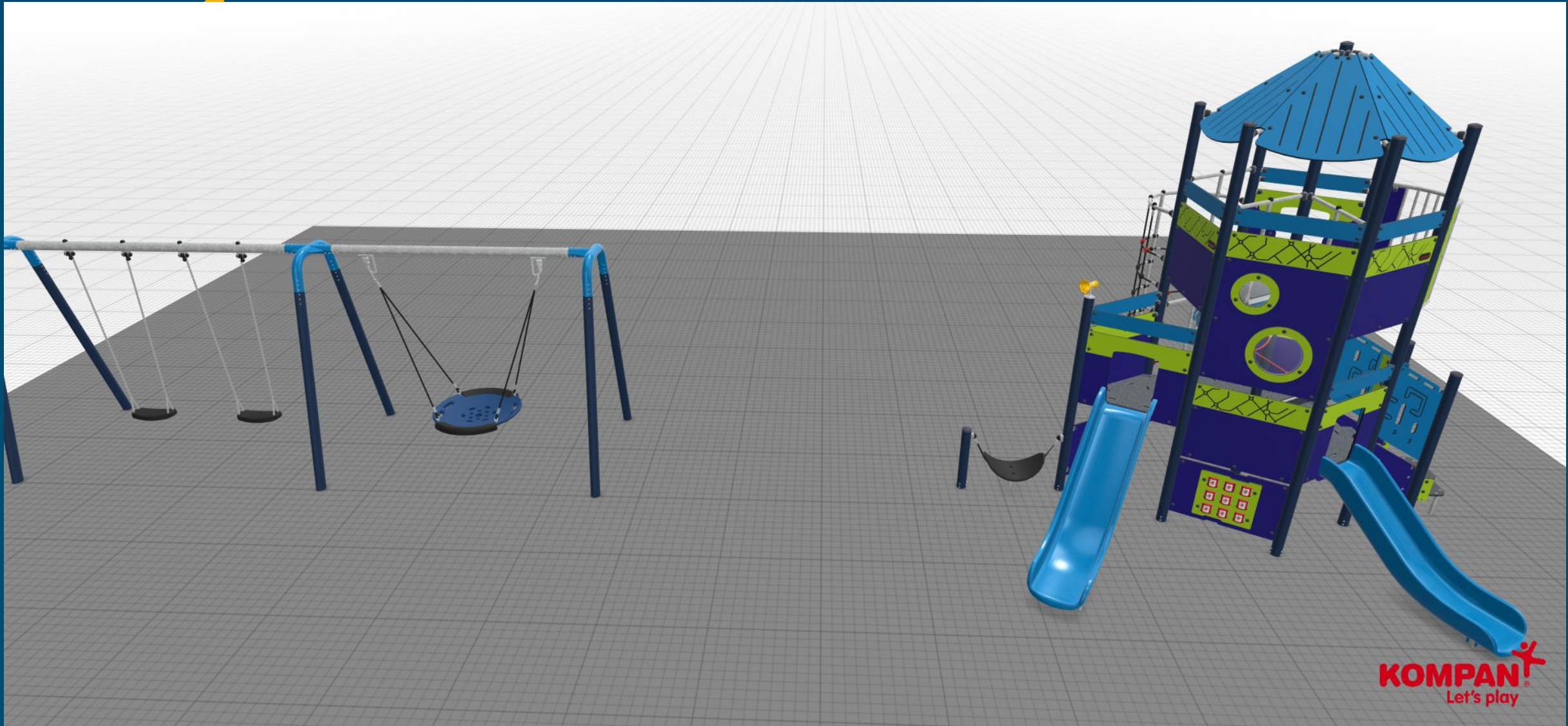
Revised
Budget After
December
16th meeting

Project
Budget
\$185,000

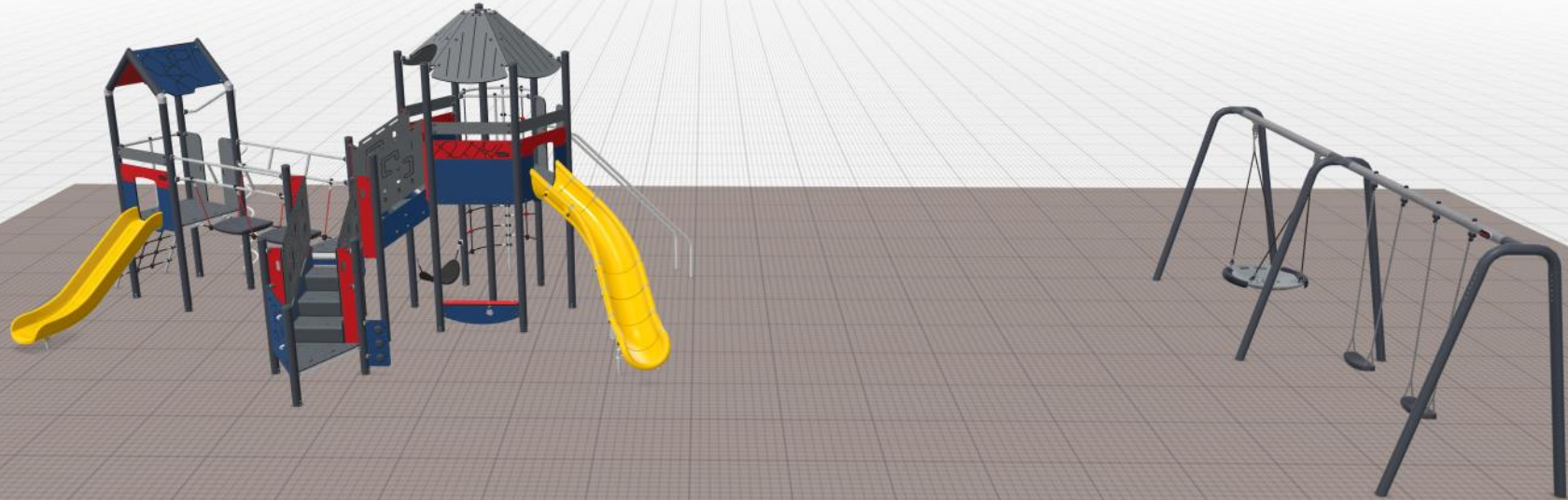
Playground Option #1



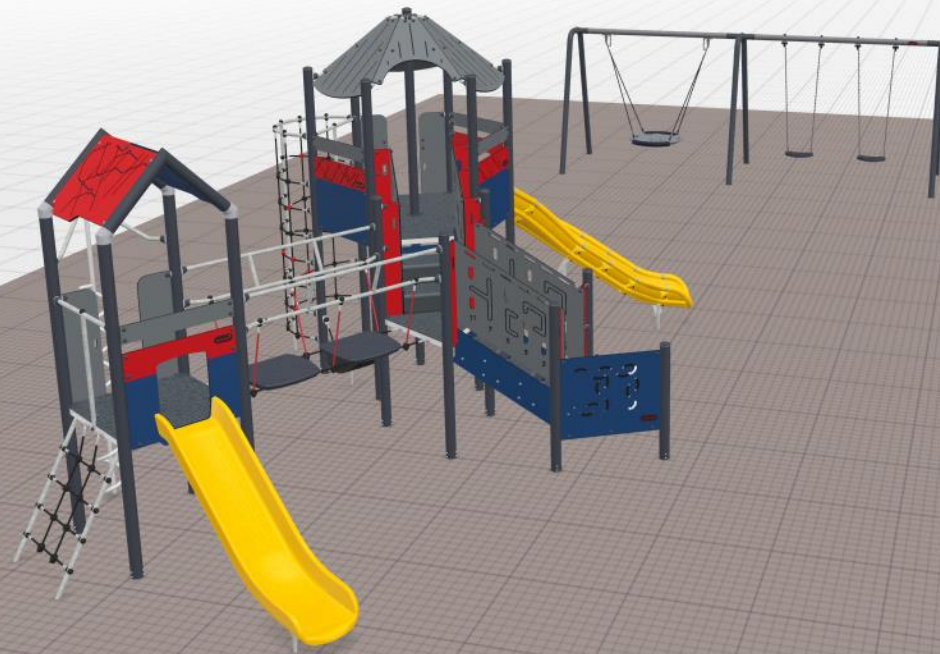
Playground Option #1



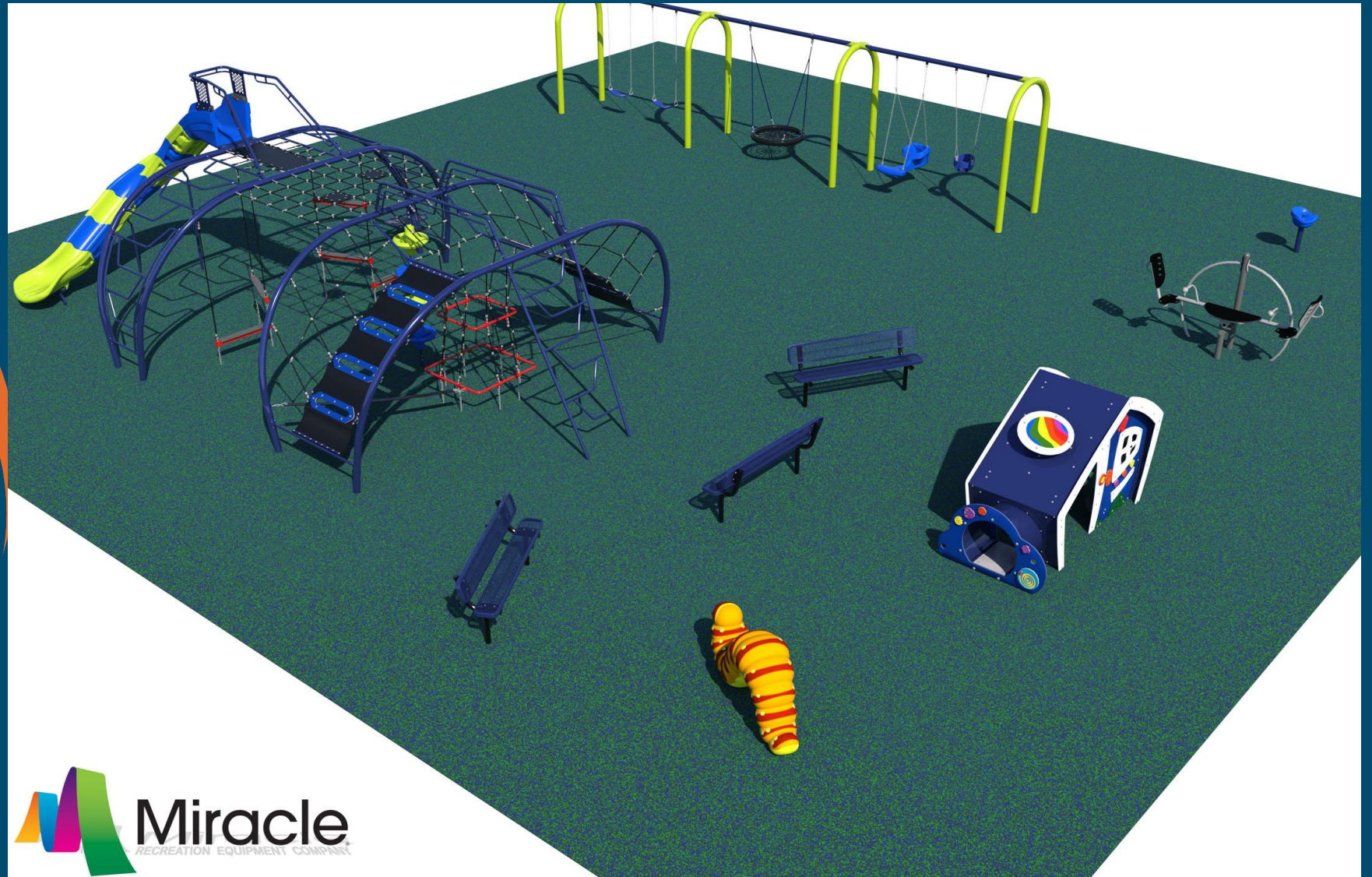
Playground Option #2



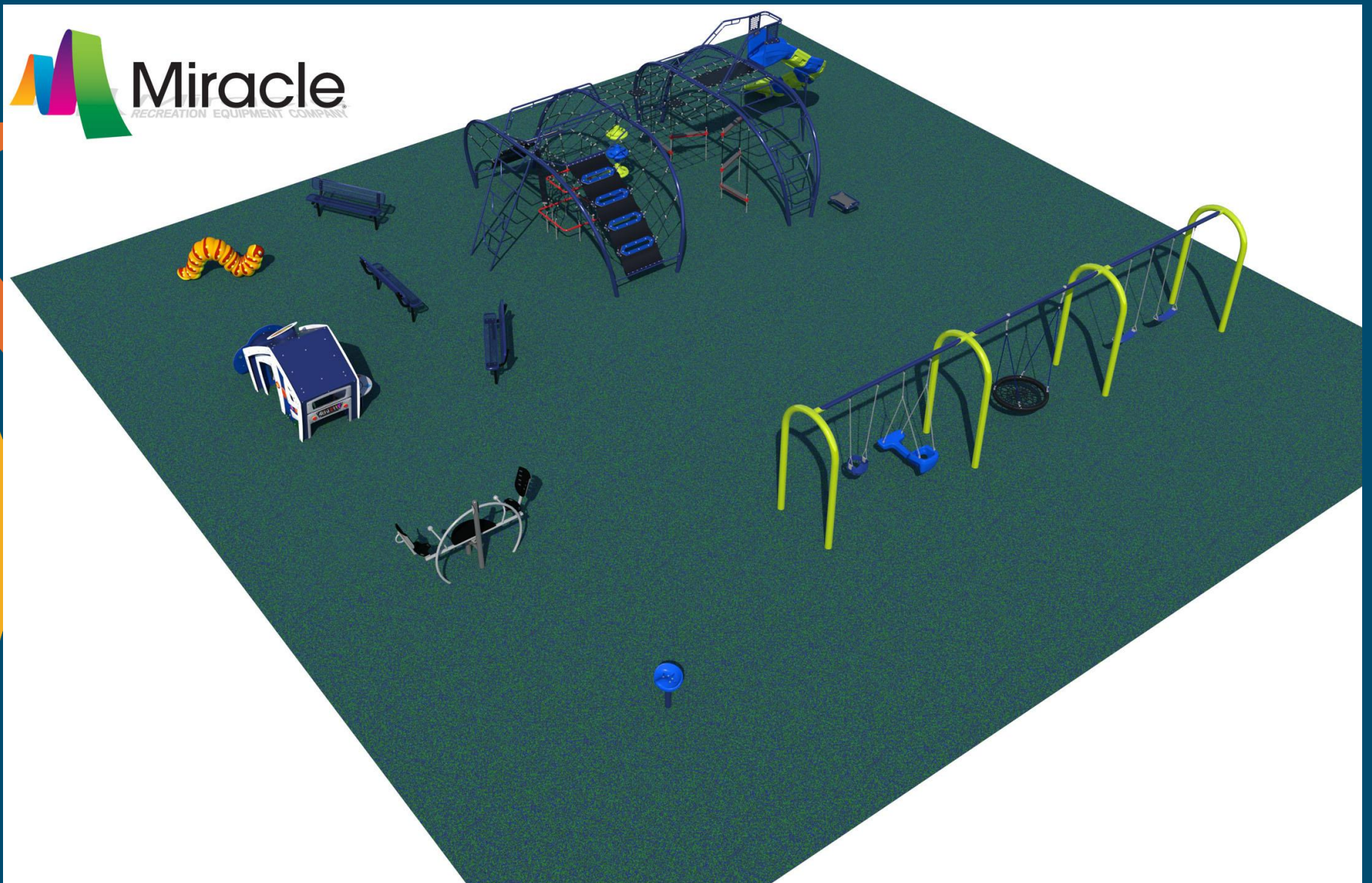
Playground Option #2



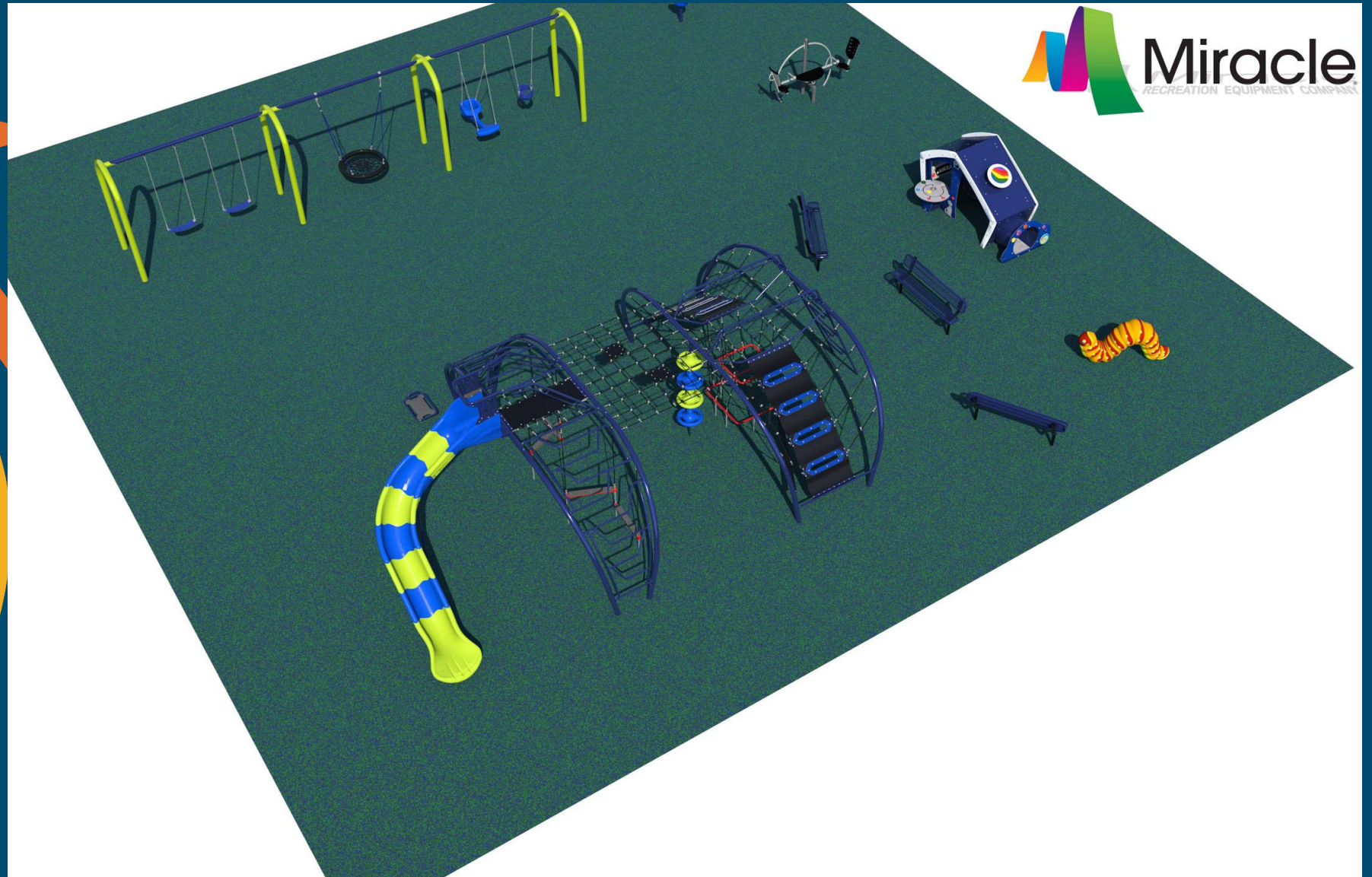
Playground Option #3



Playground Option #3



Playground Option #3



Playground Option #4



Water Tower Park

1174259-03-01 • 1.27.2025



© 2025 Landscape Structures. All Rights Reserved

Playground Option #4



Water Tower Park

1174259-03-01 • 1.27.2025



Playground Option #5



slr
landscape
structures

Water Tower Park

1174259-02-01 • 1.24.2025

AATHCO
Your Premier Athletic & Recreation Source

© 2025 Landscape Structures. All Rights Reserved

Playground Option #5



slr
landscape
structures

Water Tower Park

1174259-02-01 • 1.24.2025

ATHCO
Your Premier Athletic & Recreation Source

© 2025 Landscape Structures. All Rights Reserved

Playground Option #6



ls
landscape
structures

Water Tower Park

1174259-01-02 • 1.27.2025

ATHCO
Your Premier Athletic & Recreation Source

© 2025 Landscape Structures. All Rights Reserved

Playground Option #6



landscape
structures

Water Tower Park

1174259-01-02 • 1.27.2025

AATHCO
Your Premier Athletic & Recreation Source

© 2025 Landscape Structures. All Rights Reserved

Playground Option #6



Water Tower Park

1174259-01-02 • 1.27.2025

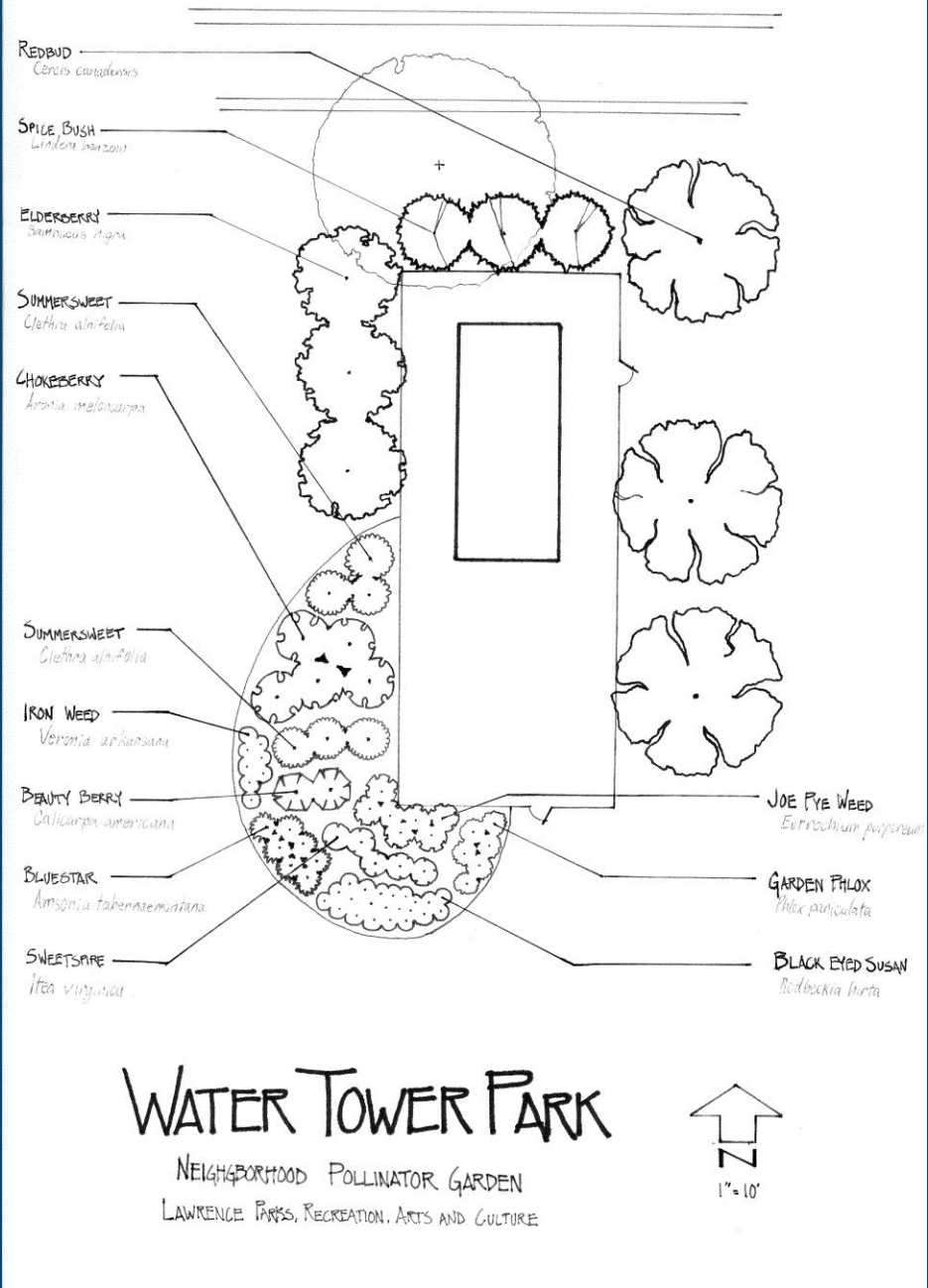


© 2025 Landscape Structures. All Rights Reserved

Perennial / Pollinator Garden



2025 layout



2025 layout



Playground Equipment	\$85,000
Playground Surfacing	\$50,000
Sidewalks	\$30,000
Perennial / Pollinator Garden	\$7,000
Park Tree	\$5,000
Seating Area / Benches	\$8,000
Shade Sail Structure	\$0

Revised
Budget After
December
16th meeting

Project
Budget
\$185,000



Water Tower Park

Redevelopment planning meeting Feb 26th, 2025